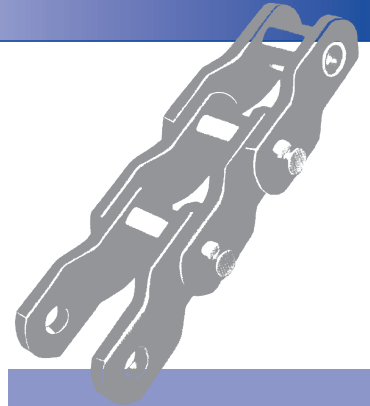




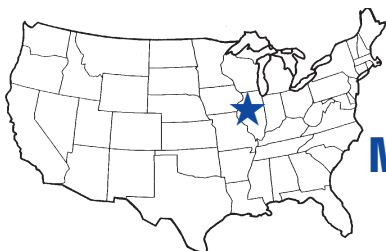
ALLIED-LOCKE INDUSTRIES

ISO 9001

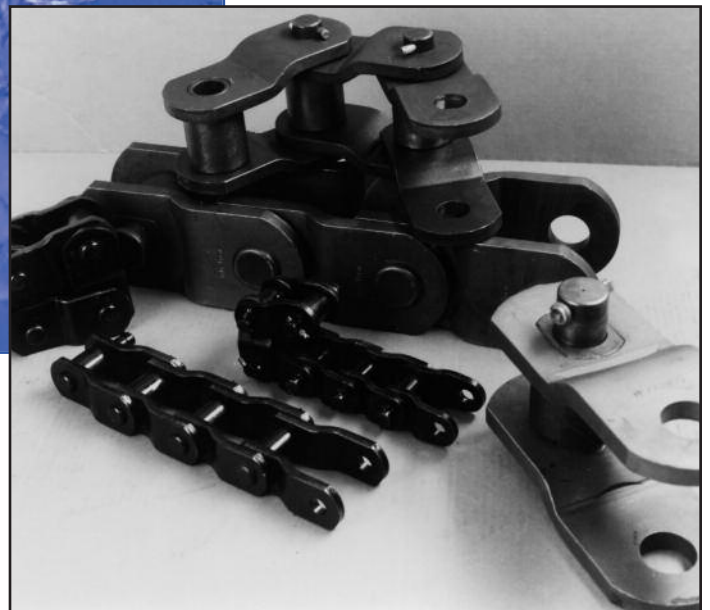
Registered Quality System



STEEL DRIVE CHAINS

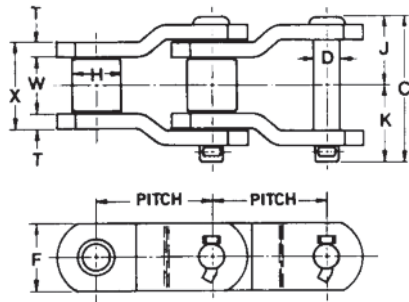


MADE IN U.S.A.

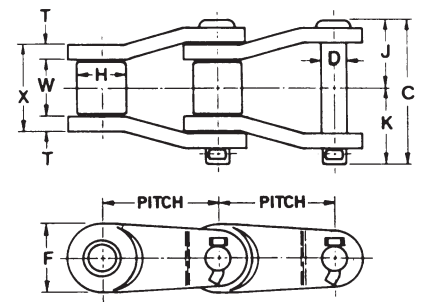
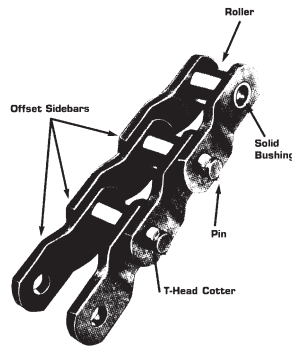


ALLIED-LOCKE STEEL DRIVE CHAINS

Allied-Locke/Moline Engineering Class Drive Chain



Style 1



Style 2

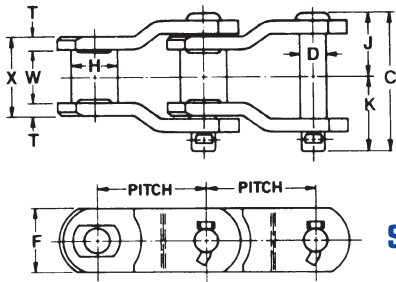
Moline Offset Drive Chain...is designed for power drives, construction machinery, and conveyors; it operates under the most severe conditions at moderately high speeds. Moline Offset Drive Chain is manufactured according to ANSI or manufacturer's standards. It may be interchanged with standard chain of other manufacturers depending upon size. There are four basic styles as stated in the tables and illustrated. The pitch range of the MXS Class is from 2.000 to 6.500 inches. Average Ultimate Strength range is from 20,000 to 600,000 pounds, and the Recommended Working Load range is from 2,300 to 30,600 pounds. MSS 6065 is

offered in 6.000 inch pitch only. Its Average Ultimate Strength is 600,000 pounds and the Recommended Working Load is 27,600 pounds. MSS 6065 was developed as an extra heavy duty replacement for MXS 6042. It is a solid bushed design rather than a roller/bushing design. This allows the pin diameter to be increased to 1.75 inches which provides a larger cross-section for higher Ultimate Strength and an increase in bearing area for greater Working Load. The sidebar height is increased to compensate for pin diameter. Drive chains are available in cottered construction only. The pins are press fitted into the offset sidebars, preventing pin rotation during

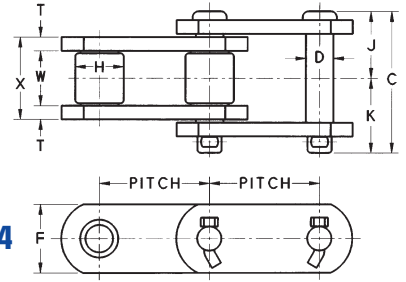
chain operation and achieving as close to 100% bearing between the pin and sidebars as possible. T-head cotters furnished with the pins fit flush against the offset sidebars. The sidebars of Moline Offset Drive Chain are stamped on the side of the chain into which the pins are to be inserted. For ready identification, this side of the chain is marked with the chain number. The closed end of the link is the recommended direction of travel for these chain classes. Fabricated or cast sprockets are available for every pitch size.

MOLINE CHAIN NO.	STYLE	PITCH IN INCHES	DIMENSIONS IN DECIMAL INCHES								
			OVER-ALL WIDTH-COTTERED C	DIAMETER OF PIN D	HEIGHT OF SIDEBAR F	DIAMETER OF ROLLER H	HEAD OF PIN TO CENTER LINE J	END OF PIN TO CENTER LINE K	THICKNESS OF SIDEBARS T	DISTANCE BETWEEN SIDEBARS W	LENGTH OF BUSHING X
MXS CLASS OFFSET DRIVE CHAIN — "Bushed Roller Type"											
MXS 3120	2	1.500	2.25	0.440	1.81	0.88			0.19	0.97	1.38
MXS 432	1	1.654	2.28	0.438	1.12	0.88	1.02	1.26	0.19	1.00	1.38
MXS 3140	2	1.750	2.44	0.500	1.63	1.00			0.22	0.97	1.44
MXS 2070	2	2.000	3.22	0.593	1.62	1.12	1.47	1.75	0.31	1.25	1.88
MXS 3160	2	2.000	2.81	0.560	1.88	1.13			0.25	1.19	1.75
MXS 3180	2	2.250	3.28	0.690	2.13	1.41			0.28	1.38	2.00
MXS 881	1	2.609	2.38	0.438	1.12	0.88	1.09	1.28	0.19	1.12	1.50
MXS 882	1	2.609	2.62	0.438	1.12	0.88	1.22	1.41	0.25	1.12	1.62
MXS 3011	1	3.067	3.94	0.750	2.25	1.62	1.81	2.12	0.38	1.56	2.31
MXS 1031	1	3.075	3.38	0.625	1.50	1.25	1.59	1.84	0.31	1.50	2.12
MXS 1032	1	3.075	3.43	0.625	1.62	1.25	1.59	1.84	0.31	1.50	2.12
MXS 3075	1	3.075	3.69	0.648	1.75	1.25	1.72	1.97	0.38	1.50	2.25
MXS 3514	1	3.500	4.44	0.875	2.25	1.75	2.06	2.38	0.50	1.50	2.50
MXS 1242	1	4.063	4.88	0.875	2.25	1.75	2.25	2.62	0.50	1.94	2.94
MXS 1245	1	4.073	5.12	0.938	2.38	1.78	2.38	2.75	0.56	1.94	3.06
MXS 4522	1	4.500	5.25	1.100	3.00	2.25	2.44	2.81	0.56	2.06	3.19
MXS 5031	1	5.000	6.25	1.250	3.50	2.50	2.91	3.34	0.62	2.75	4.00
MXS 5035	1	5.000	6.62	1.375	3.50	2.50	3.12	3.50	0.75	2.56	4.06
MXS 5542	1	5.500	7.12	1.500	4.00	3.00	3.28	3.84	0.75	3.00	4.50
MXS 88B	1	5.750	7.12	1.500	4.00	3.00	3.28	3.84	0.75	3.00	4.50
MXS 6042	1	6.000	7.12	1.500	4.00	3.00	3.28	3.84	0.75	3.00	4.50
MXS 6565	3	6.500	8.26	1.750	5.00	3.50	3.88	4.38	0.88	3.50	5.00
MXS 7065	1	7.000	8.06	1.750	5.00	3.50	3.81	4.25	0.88	3.25	5.00
MSS CLASS OFFSET DRIVE CHAIN — "Steel Bushed Type"											
MSS 6065	3	6.000	7.32	1.750	4.75	3.00	3.44	3.88	0.75	3.00	4.50
MSR CLASS STRAIGHT DRIVE CHAIN — "Bushed Roller Type"											
MSR 1353	4	4.090	5.75	1.312	3.00	2.62	2.66	3.09	0.62	2.25	3.50
MSR 6060	4	6.000	8.06	1.750	5.00	3.50	3.81	4.25	0.88	3.25	5.00
MSR 6560	4	6.500	8.06	1.750	5.00	3.50	3.81	4.25	0.88	3.25	5.00

ALLIED-LOCKE STEEL DRIVE CHAINS



Style 3



Style 4

MOLINE CHAIN NO.	STYLE	PITCHES IN INCHES	STANDARD ANSI B29.10 NUMBER	LINKS PER 10 FEET	WEIGHT PER FOOT LBS.	AVERAGE ULTIMATE STRENGTH LBS.	RECOMMENDED MAXIMUM WORKING LOAD-LBS.
MXS CLASS OFFSET DRIVE CHAIN — "Bushed Roller Type"							
MXS 3120	2	1.500	—	80	4.0	28,000	2,100
MXS 432	1	1.654	—	73	3.5	20,000	2,100
MXS 3140	2	1.750	—	69	5.2	39,000	2,500
MXS 3160	2	2.000	—	60	6.7	50,000	3,450
MXS 2070	2	2.000	—	60	7.6	70,000	3,890
MXS 3180	2	2.250	—	53	9.6	63,000	4,800
MXS 881	1	2.609	—	46	3.0	20,000	2,300
MXS 882	1	2.609	—	46	3.6	26,000	2,500
MXS 3011	1	3.067	2512	39	13.2	110,000	6,100
MXS 1031	1	3.075	—	39	7.3	48,000	4,650
MXS 1032	1	3.075	—	39	7.7	60,000	4,650
MXS 3075	1	3.075	—	39	9.0	75,000	5,100
MXS 3514	1	3.500	2814	34	16.0	140,000	7,650
MXS 1242	1	4.063	—	30	15.6	140,000	9,000
MXS 1245	1	4.073	3315	30	18.6	170,000	10,050
MXS 4522	1	4.500	3618	27	25.0	220,000	12,300
MXS 5031	1	5.000	4020	24	36.0	310,000	17,500
MXS 5035	1	5.000	—	24	38.1	350,000	19,600
MXS 5542	1	5.500	—	22	49.1	420,000	23,700
MXS 88B	1	5.750	—	21	49.0	420,000	23,700
MXS 6042	1	6.000	4824	20	46.5	420,000	23,700
MXS 6565	1	6.500	—	18.5	78.5	600,000	30,600
MXS 7065	1	7.000	—	17	67.0	600,000	30,600
MSS CLASS OFFSET DRIVE CHAIN — "Steel Bushed Type"							
MSS 6065	3	6.000	—	20	51.7	600,000	27,600
MSR CLASS STRAIGHT DRIVE CHAIN — "Bushed Roller Type"							
MSR 1353	4	4.090	—	30	32.6	21,000	16,000
MSR 6060	4	6.000	4824	20	68.0	600,000	30,600
MSR 6560	4	6.500	—	18.5	72.0	600,000	30,600

Materials

ASCH = Alloy Steel Case Hardened
 ASHT = Alloy Steel Heat Treated
 ASIH = Alloy Steel Induction Hardened

LEGEND

CSCH = Carbon Steel Case Hardened
 CSHT = Carbon Steel Heat Treated
 CSTH = Carbon Steel Thru Hardened
 ASTH = Alloy Steel Thru Hardened

MOLINE CHAIN NO.	ROLLERS	PINS	BUSHINGS	SIDEBARS
MXS CLASS OFFSET DRIVE CHAIN — "Bushed Roller Type"				
MXS 432	CSTH	CSCH	CSCH	CSHT
MXS 88B	ASTH	ASIH	ASCH	ASHT
MXS 881	CSTH	CSCH	CSCH	CSHT
MXS 882	CSTH	CSCH	CSCH	CSHT
MXS 1031	ASTH	ASIH	ASCH	CSHT
MXS 1032	ASTH	ASIH	ASCH	ASHT
MXS 1242	ASTH	ASIH	ASCH	ASHT
MXS 1245	ASTH	ASIH	ASCH	ASHT
MXS 2070	ASTH	ASTH	ASCH	ASHT
MXS 3011	ASTH	ASIH	ASCH	ASHT
MXS 3075	ASTH	ASIH	ASCH	ASHT
MXS 3120	TH	CH		TH
MXS 3140	TH	CH		TH
MXS 3160	TH	CH		TH
<i>MXS CLASS OFFSET DRIVE CHAIN CONTINUED IN NEXT COLUMN</i>				

MOLINE CHAIN NO.	ROLLERS	PINS	BUSHINGS	SIDEBARS
MXS CLASS OFFSET DRIVE CHAIN — "Bushed Roller Type"				
MXS 3180		CH		TH
MXS 3514	ASTH	ASIH	ASCH	ASHT
MXS 4522	ASTH	ASIH	ASCH	ASHT
MXS 5031	ASTH	ASIH	ASCH	ASHT
MXS 5035	ASTH	ASIH	ASCH	ASHT
MXS 5542	ASTH	ASIH	ASCH	ASHT
MXS 6042	ASTH	ASIH	ASCH	ASHT
MXS 6565	ASTH	ASIH	ASCH	ASHT
MXS 7065	ASTH	ASIH	ASCH	ASTH
MSS CLASS OFFSET DRIVE CHAIN — "Steel Bushed Type"				
MSS 6065		ASIH	ASTH	ASHT
MSR CLASS STRAIGHT DRIVE CHAIN — "Bushed Roller Type"				
MSR 1353	ASTH	ASIH	ASCH	ASHT
MSR 6060	ASTH	ASIH	ASCH	ASTH
MSR 6560	ASTH	ASIH	ASCH	ASHT

Allied-Locke/Moline Drive Chain Interchange List

PITCH IN INCHES	MOLINE Number	COMPETITORS CROSS REFERENCE				
1.500	MXS 3120	3120CM			IS1532	
1.654	MXS 432	R432	ROA622	US622	IS622	
1.750	MXS 3140	3140CM			IS1742	
2.000	MXS 2070	R3113		US2065	IS2065	PC2010
2.000	MXS 3160	3160CM			IS2059	
2.250	MXS 3180	3180.00				
2.609	MXS 881	R778	ROA881	US881	IS881	
2.609	MXS 882	R588	ROA882	US882	JS882	
3.067	MXS 3011	AX1568	ROA2512	US3011	JS3011	PC3012
3.075	MXS 1031	R1033	ROA1031	US1031	JS1031	PC3010
3.075	MXS 1032	R1035	RO1032			
3.075	MXS 3075	R1037	RO40HYPER	US3075	JS3075	PC3010
3.500	MXS 3514	RX238	ROA2814	US3514	JS3514	PC3514
4.063	MXS 1242	R1248	ROA1242	US1242	JS4014	PC4014N
4.073	MXS 1245	RX1245	ROA3315	US1245	JS1245A	PC4015A
4.090	MSR 1353					
4.500	MXS 4522	ROA635	ROA3618	US4522	IS4522	PC4518
5.000	MXS 5031	RX1207	ROA4020	US5031	JS5031	PC5020
5.000	MXS 5035	RO1315	ROA5035	US5035	1605AAA	PC5022
5.500	MXS 5542	RO1356	ROA5542	US5542		PC5524
5.750	MXS 88B	1301		US5738	JS1632	PC5724
6.000	MXS 6042	RO1306	ROA4824	US6042	JS6042	PC6024
6.000	MSS 6065	RX9506H		US6066		
6.000	MSR 6060	X1365				
6.500	MSR 6560					
6.500	MXS 6565	X1311	ROA6555	US6566	JS6555	PC6528
7.000	MXS 7065				JS7055	



ALLIED-LOCKE INDUSTRIES

Green River Industrial Park • P.O. Box 509 • Dixon, Illinois 61021

TOLL FREE PHONE: (800) 435-7752

TOLL FREE FAX: (800) 462-3130

LOCAL PHONE: (815) 288-1471

LOCAL FAX: (815) 288-7945

www.alliedlocke.com

11-09 2000