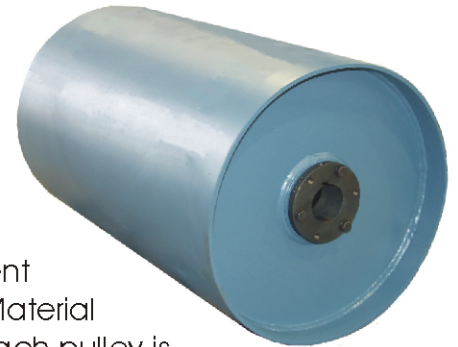
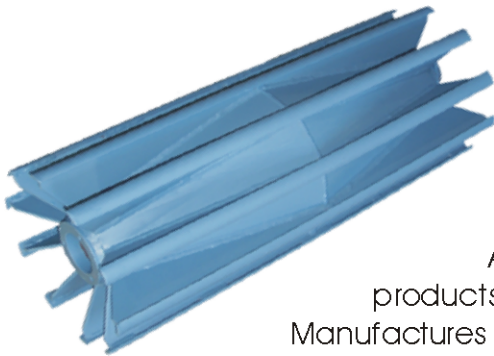


American Pulley

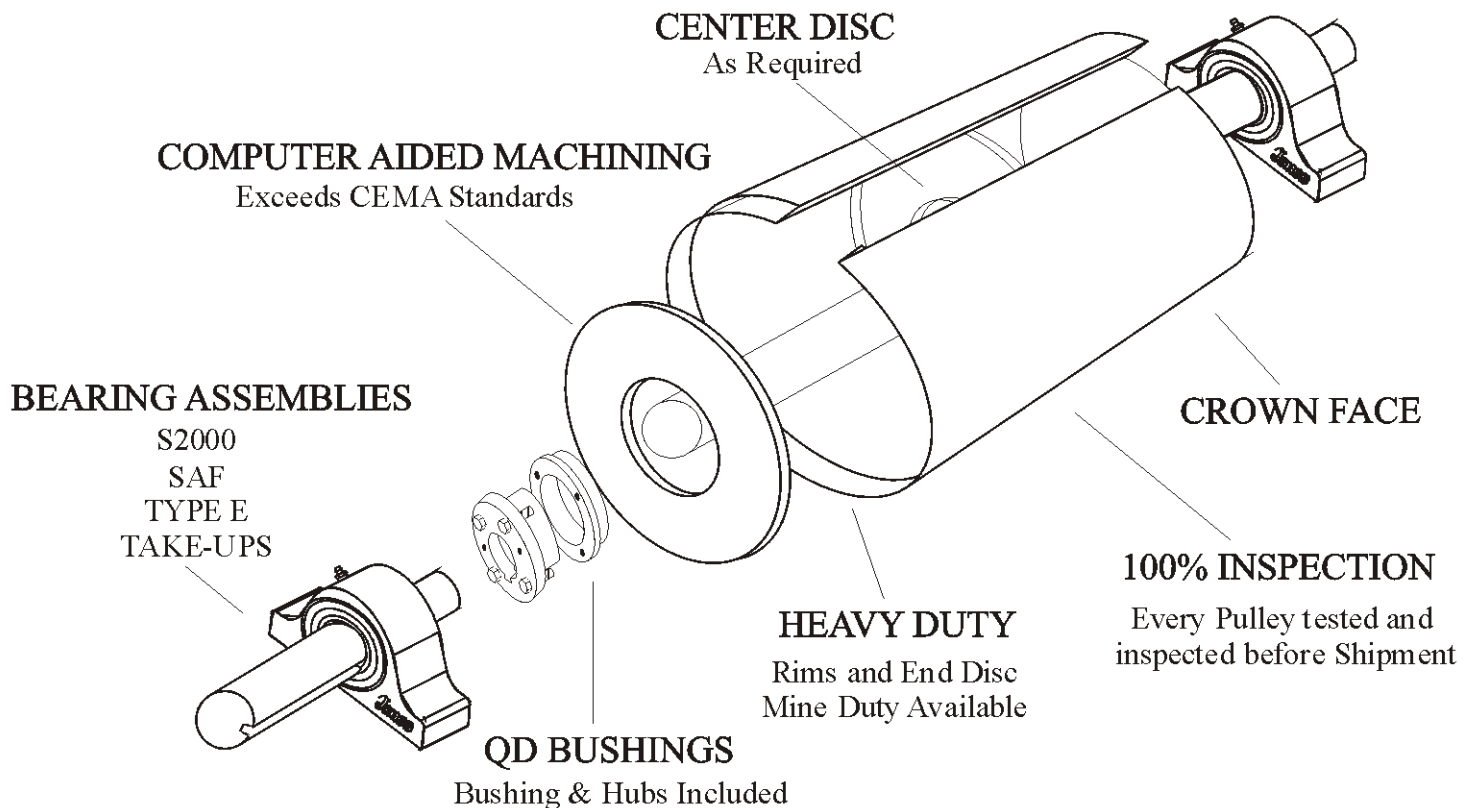
Phone: 205-663-3002

FAX 205-664-3351

Quality Commitment



American Pulley manufactures all products to meet or exceed Conveyor Equipment Manufacturers Association standards (CEMA) for Bulk Material Handling. Our methods of manufacture are modern and each pulley is checked for quality. End Disc and Rim thickness are selected and pre engineered by computer generated program. Often times our pulleys will employ additional center disc, ring stiffeners, or increased bushing sizes etc. even though the customer does not specify such to provide for these standards. Our experienced factory personnel select pulleys and shafting based on our knowledge of Pulleys and the Conveyor Industry. American Pulley guarantees that each pulley will meet these standards.



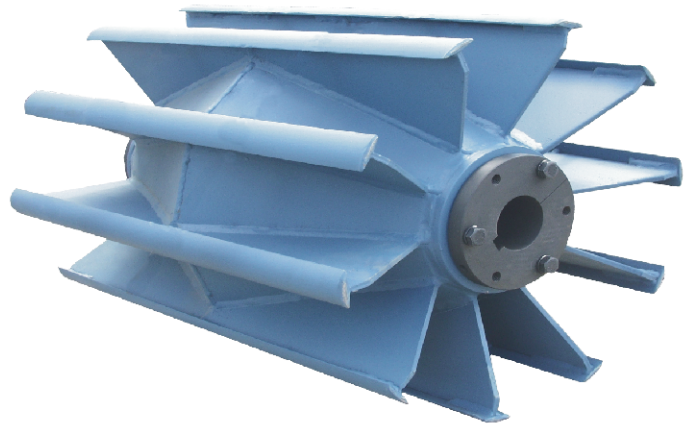
Heavy Duty Drums



Standard drums are manufactured crowned to help maintain belt alignments. Straight face designs are available upon request. Drums are designed utilizing a single piece rolled plate rim, extra strength end disc and intermediate disc where required. Pulley end disc are cut using computer to insure accuracy and provide for a minimum accuracy required by CEMA. Each Pulley is tested for run out requirements and assembled with hubs bored for customer required shafting. American Pulley provides single piece rolled rim from specially designed rolls for accuracy and rigidity.

Standard Wings are manufactured crowned to help maintain belt alignments. Wing pulleys help provide tracking and tend to help clean the belt from the action of the design. Wings are jig cut and welded for extra strength. Pulley end disc are cut from computer and checked for accuracy before and after welding. Contact bars are provided with half round material to prevent wear and eliminate the potential for sharp edges that can damage the belt. The contact bars are the only part to contact belt, providing a self cleaning feature that make this design best for tails and snub shafts.

Heavy Duty Wings



Specials

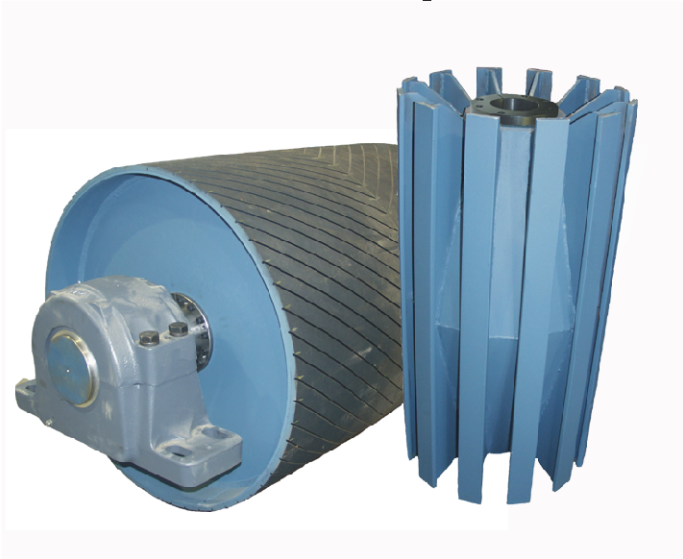
American Pulley many types of special pulleys for provides specific applications including:



Stainless Steel Pulleys, Bushings, and Shafting

- Stainless Steel Pulleys
- Flanged End Pulleys
- Spiral Wing Pulleys
- Spiral Disc Returns
- Bucket Elevator Pulleys
- Live Shafts w/ Bearings

Mine Duty



Mine Duty pulleys are designed extra heavy duty and include extra thick end disc and rims. Mine Duty Pulleys are used in applications where service is extreme or when the life of a pulley is critical to prevent downtime. Customers should take great care in purchasing mine duty pulleys from various manufacture since no industry standards exist. American Pulley Mine Duty drums and wings are designed with average end disc thickness exceeding 1" and 1/2 roll shell thickness on drums. Mine Duty wings generally are provided with 2 times material thickness on heavy duty specifications.

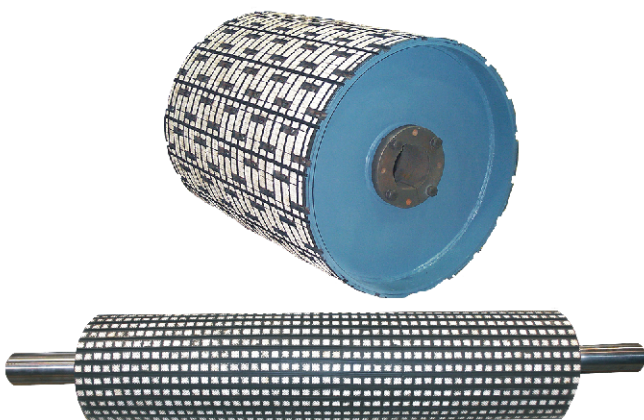
Pulley Lagging is often utilized on head shaft to prevent slippage and prolong wear. American provides vulcanized rubber lagging as a standard. Thickness are generally 1/4", 3/8", or 1/2" and are stocked in both plain or Herringbone designs. A variety of other lagging types and thicknesses are available upon request. Lagging is also available for wings if requested.

Vulcanized Lagging



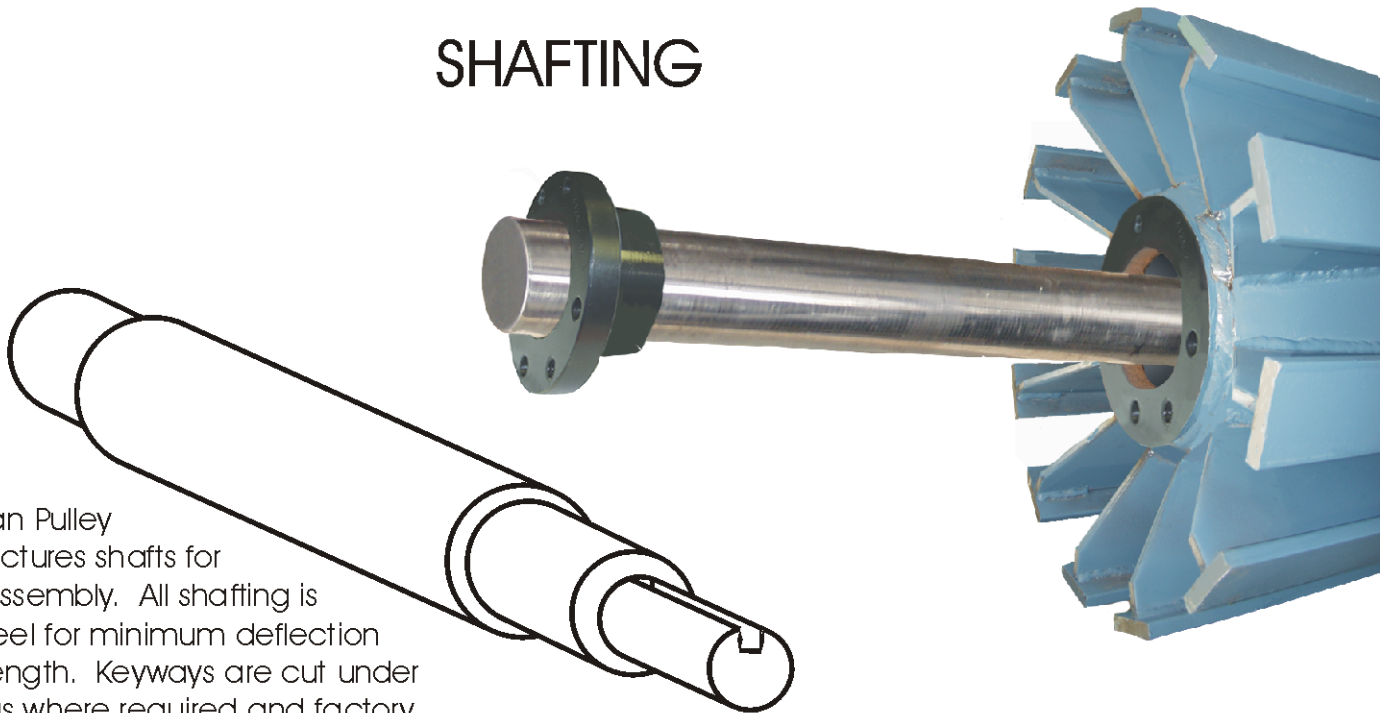
American stocks ceramic lagging for installation on mine duty pulleys. Ceramic lagging offers many vantages for industrial users. The ceramic tiles embedded into rubber will provide for the hardest and more durable wear surface available. A ceramic lagged pulley is designed for users that convey very abrasive product or do not wish to replace pulleys. The high cost of this lagging is offset by the increase life. Ceramic lagging also is idea to increase friction at the head shaft for pulleys that are experiencing slippage due to load, moisture, or inadequate wrap. American Pulley provides a 3-year-wear guarantee on Ceramic lagged pulleys.

Ceramic Lagging

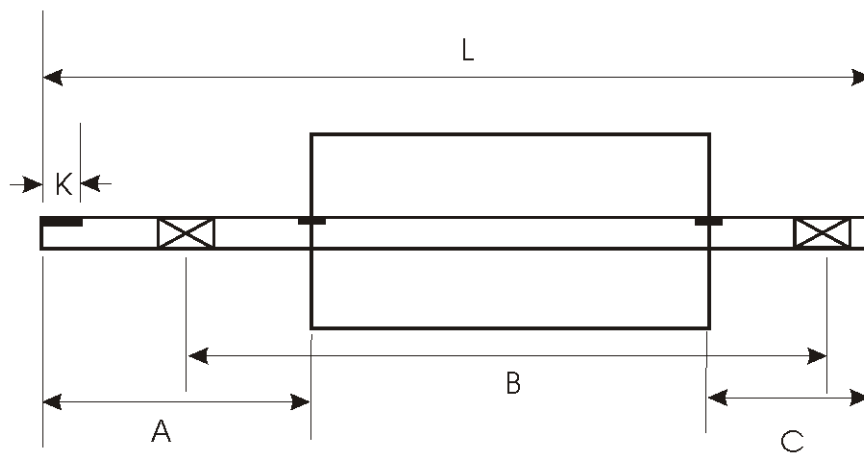


Ceramic Lagged Pulleys

SHAFTING



American Pulley manufactures shafts for pulley assembly. All shafting is 1045 steel for minimum deflection and strength. Keyways are cut under bushings where required and factory assembled to insure quality and compatibility. Alloy and special shafts will be supplied as required.



Order Information

When ordering shafting , please provide the following information

L= overall length
B= Bearing Centers

K= Keyway size and length
A= Length from pulley to drive end

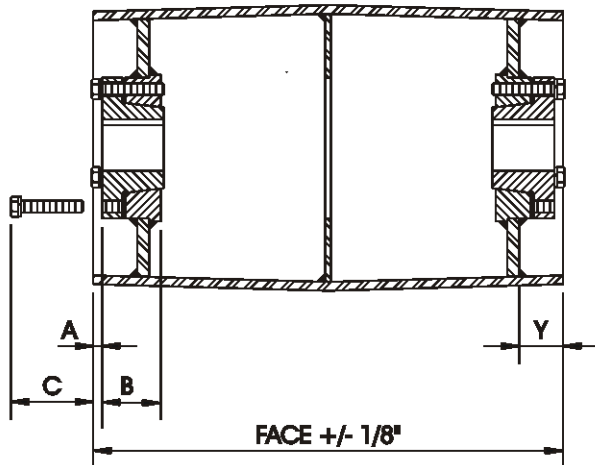
C= Length from pulley to shaft end

Specify shaft dia. And # keyways in hubs

BUSHING LOCATIONS

DRUMS & WINGS

Heavy Duty And Mine Duty
Drum Dimensions



Bushing

QD XT

25 SF
30 E
35 F
40 JS
45 MS
50 NS
60 PS
80 WS

Dimensions

A	B	C
3/4"	2 1/16"	1 1/4"
2 1/32"	2 3/4"	2 3/32"
13/16"	3 3/4"	2 13/16"
1 1/16"	3 3/8"	1 7/16"
1 5/16"	4 13/16"	2 1/16"
1 1/8"	6"	2 3/8"
1 1/2"	6 1/2"	3"
1 3/8"	7 1/4"	3 5/8"

Bushing

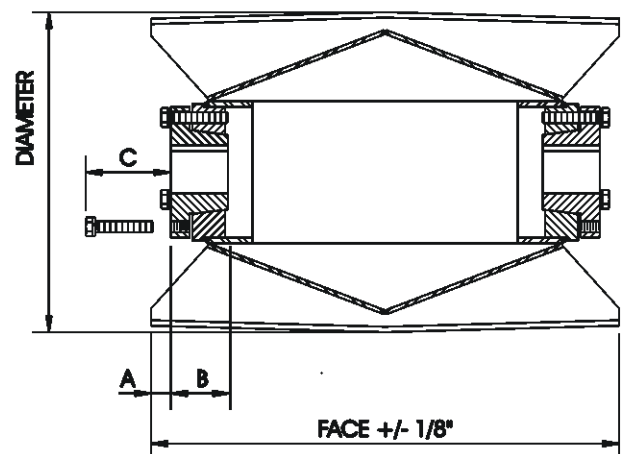
QD XT

25 SF
30 E
35 F
40 JS
45 MS
50 NS
60 PS
80 WS

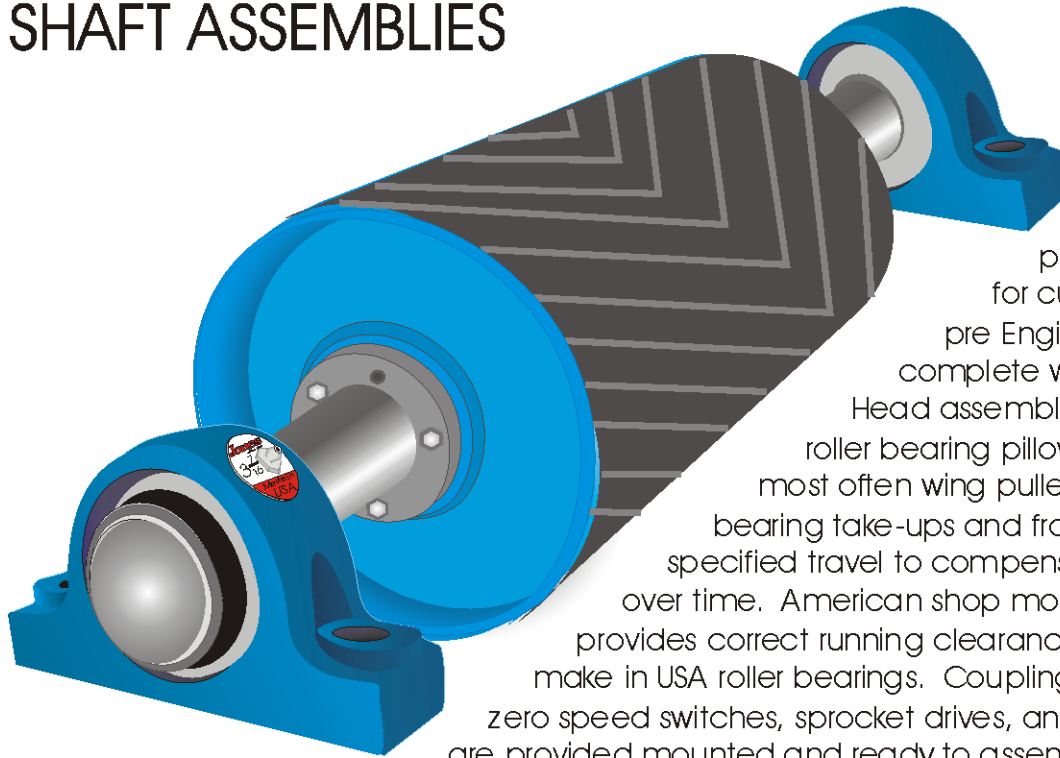
Dimensions

A	B	C
3/8"	2 1/16"	1 1/4"
1/2"	2 3/4"	2 3/32"
1/2"	3 3/4"	2 13/16"
1/2"	3 3/8"	1 7/16"
1/2"	4 13/16"	2 1/16"
1/2"	6"	2 3/8"
1/2"	6 1/2"	3"
1/2"	7 1/4"	3 5/8"

Heavy Duty And Mine Duty
Wing Dimensions



SHAFT ASSEMBLIES

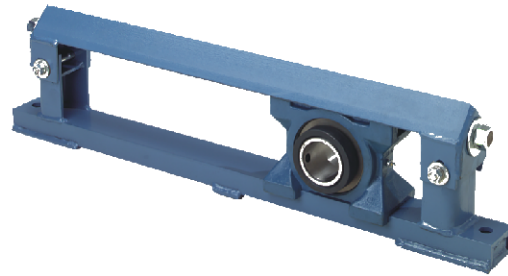
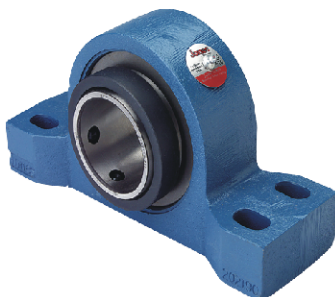


American Pulley provides shaft assemblies for customers who require pre Engineered assemblies complete with shaft and bearings. Head assemblies generally require roller bearing pillow blocks, while tails are most often wing pulleys complete with roller bearing take-ups and frames that allow specified travel to compensate for belt elongation over time. American shop mounts assemblies and provides correct running clearance and high quality make in USA roller bearings. Couplings, external backstops, zero speed switches, sprocket drives, and all other components are provided mounted and ready to assemble to the customers frame or machine to eliminate any chance of field error.



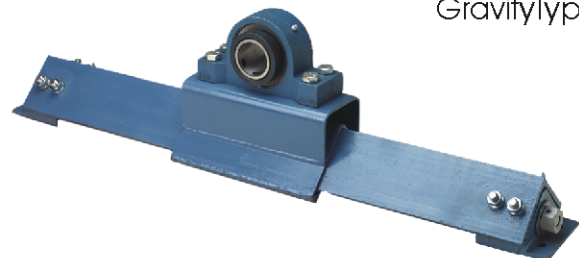
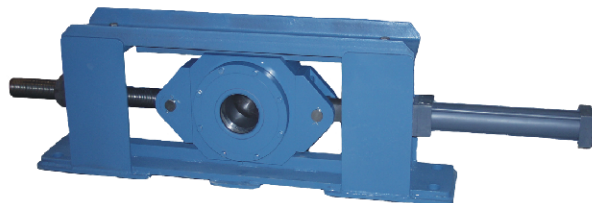
PILLOW BLOCKS

S200 Series
Type E
SAF
Extra Heavy Duty
All Steel Housings
Jones 1000 Series



TAKE-UPS

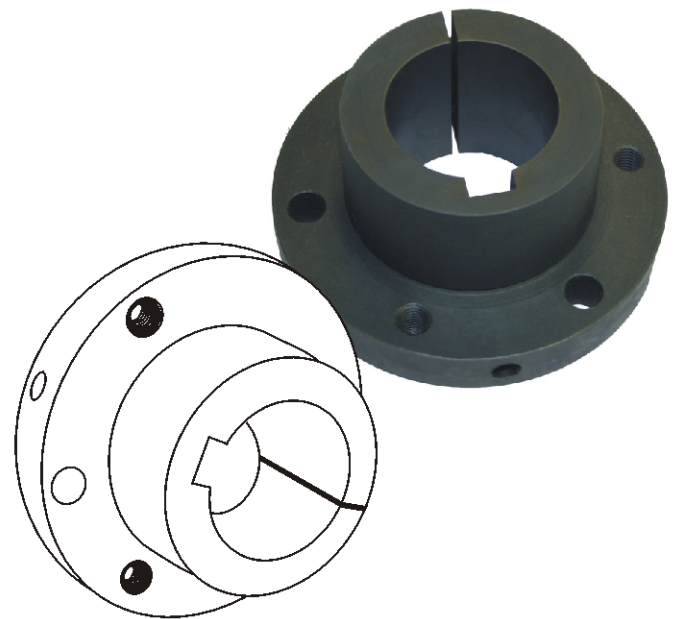
Top Angles
Center Pulls
Pillow Block Style
Spring Loaded
All Steel Housings
GravityType



KEYWAY DIMENSIONS

QD BUSHINGS

	STOCK BORES	BORE RANGE	BUSHING KEYWAY	SHAFT KEYWAY
SF	--	1/2 to 9/16	1/8 x 1/16	1/8 x 1/16
	--	5/8 to 7/8	3/16 x 3/32	3/16 x 3/32
	1, 1 3/16	15/16 to 1 1/4	1/4 x 1/8	1/4 x 1/8
	--	1 5/16 to 1 3/8	5/16 x 5/32	5/16 x 5/32
	1 7/16, 1 1/2, 1 11/16	1 7/16 to 1 3/4	3/8 x 3/16	3/8 x 3/16
	1 15/16, 2 3/16	1 13/16 to 2 1/4	1/2 x 1/4	1/2 x 1/4
E	--	2 5/16 to 2 3/8	5/8 x 5/16	5/8 x 5/16
	2 7/16	2 7/16 to 2 1/2	5/8 x 1/8	5/8 x 5/16
	--	7/8	3/16 x 3/32	3/16 x 3/32
	--	15/16 to 1 1/4	1/4 x 1/8	1/4 x 1/8
	--	1 5/16	5/16 x 5/32	5/16 x 5/32
	1 7/16, 1 11/16	1 7/16 to 1 3/4	3/8 x 3/16	3/8 x 3/16
F	1 15/16, 2 3/16	1 3/16 to 2 1/4	1/2 x 1/4	1/2 x 1/4
	2 7/16, 2 11/16	2 5/16 to 2 3/4	5/8 x 5/16	5/8 x 5/16
	2 15/16	13/16 to 2 15/16	3/4 x 1/8	3/4 x 5/8
	--	1 to 1 1/4	1/4 x 1/8	1/4 x 1/8
	--	1 5/16 to 1 3/8	5/16 x 5/32	5/16 x 5/32
	--	1 7/16 to 1 3/4	3/8 x 3/16	3/8 x 3/16
JS	1 15/16, 2 3/16	1 13/16 to 2 1/4	1/2 x 1/4	1/2 x 1/4
	2 7/16	2 5/16 to 2 1/4	5/8 x 5/16	5/8 x 5/16
	2 15/16	2 13/16 to 3 1/4	3/4 x 3/8	3/4 x 3/8
	--	3 5/16 to 3 1/8	7/8 x 7/16	7/8 x 7/16
	3 7/16	3 7/16	7/8 x 7/16	7/8 x 7/16
	--	1 to 1 3/4	3/8 x 3/16	3/8 x 3/16
MS	--	1 13/16 to 2 1/4	1/2 x 1/4	1/2 x 1/4
	2 7/16	5/16 to 2 3/4	5/8 x 5/16	5/8 x 5/16
	2 15/16, 3	2 3/16 to 3 1/4	3/4 x 3/8	3/4 x 3/8
	3 7/16	3 5/16 to 3 3/4	7/8 x 7/16	7/8 x 7/16
	--	3 13/16 to 3 7/8	1 x 1/2	1 x 1/2
	3 15/16	3 15/16	1 x 1/8	1 x 1/2
NS	--	2 to 2 1/2	1/2 x 1/4	1/2 x 1/4
	--	2 5/16 to 2 3/4	5/8 x 5/16	5/8 x 5/16
	--	2 13/16 to 3 1/4	3/4 x 3/8	3/4 x 3/8
	3 7/16	3 5/16 to 3 3/4	7/8 x 7/16	7/8 x 7/16
	3 15/16, 4 7/16	3 13/16 to 4 1/2	1 x 1/2	1 x 1/2
	--	4 9/16 to 5	1 1/4 x 5/8	1 1/4 x 5/8
PS	--	2 7/16 to 2 3/4	5/8 x 5/16	5/8 x 5/16
	--	2 13/16 to 3 1/4	3/4 x 3/8	3/4 x 3/8
	--	3 5/16 to 3 3/4	7/8 x 7/16	7/8 x 7/16
	--	3 13/16 to 4 1/2	1 x 1/2	1 x 1/2
	4 15/16	4 9/16 to 5	1 1/4 x 5/8	1 1/4 x 5/8
	--	2 15/16 to 3 1/4	3/4 x 3/8	3/4 x 3/8
WS	--	3 5/16 to 3 3/4	7/8 x 7/16	7/8 x 7/16
	--	3 13/16 to 4 1/2	1 x 1/2	1 x 1/2
	5 7/16	4 9/16 to 5 1/2	1 1/4 x 5/8	1 1/4 x 5/8
	5 15/16, 6	5 9/16 to 6	1 1/2 x 1/4	1 1/2 x 3/4
	--	4 7/16 to 4 1/2	1 x 1/2	1 x 1/2
	--	4 9/16 to 5 1/2	1 1/4 x 5/8	1 1/4 x 5/8

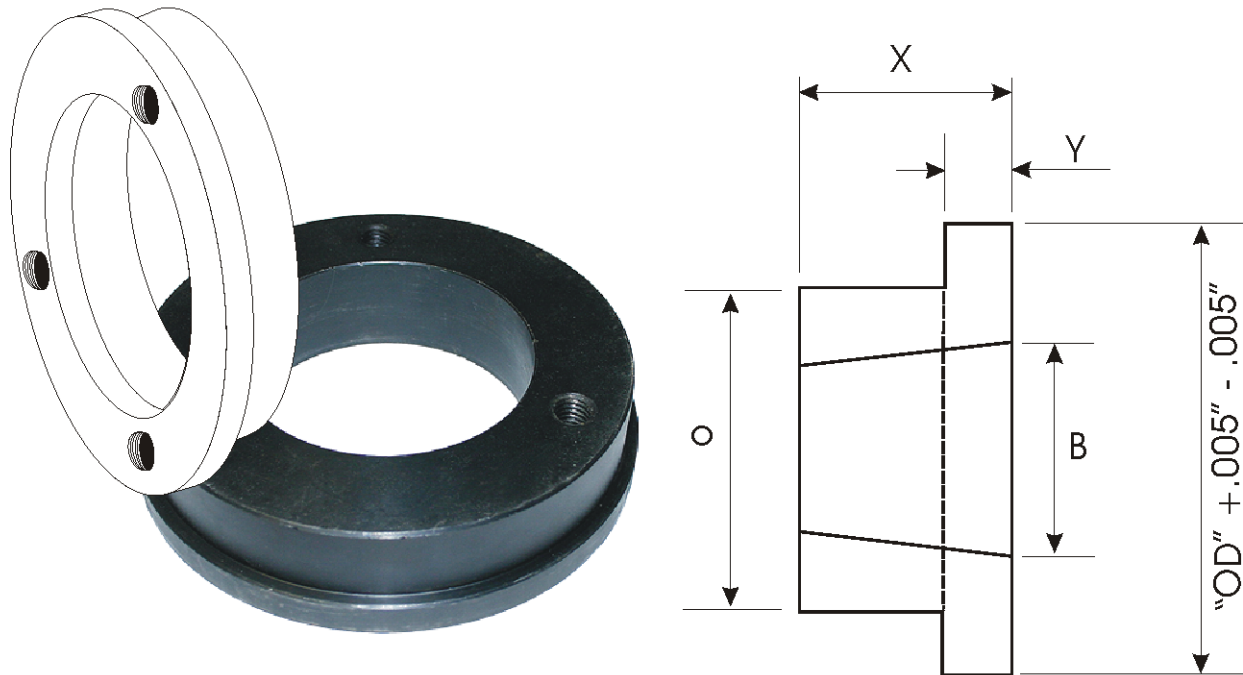


RECOMMENDED WRENCH TORQUE

QD HUB SIZE	WRENCH TORQUE (LBS.)	WRENCH LENGTH (INCHES)	WRENCH PULL (LBS.)
SF	360	6	60
E	720	12	60
F	900	12	75
JS	1620	12	135
MS	2700	15	180
NS	3600	30	180
PS	5400	20	180
WS	7200	36	200

NOTE: Bushings and cap screws must be periodically checked for proper seating at least once after installation and then checked periodically.

Q-D Weld-On Hubs



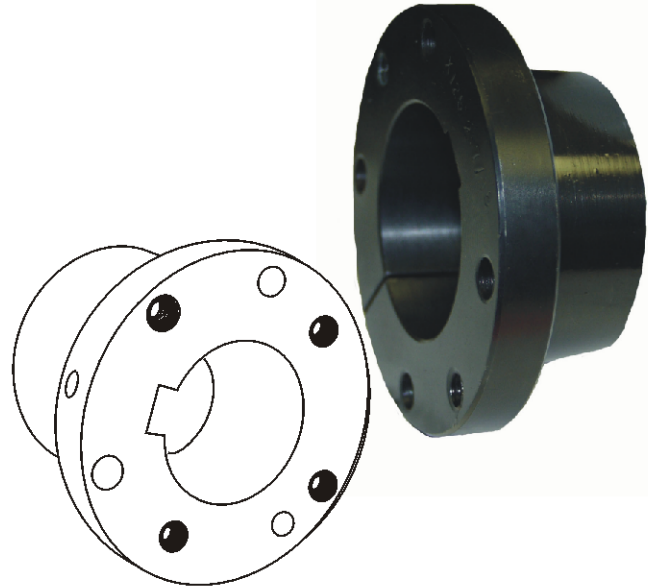
American Pulley offers a full line of weld on hubs for QD style bushings used in a wide range of applications. Hubs are computer aided precision cut to insure accuracy. The low carbon steel used for hubs will allow for maximum welding efficiency and full penetration for strength.

HUB SIZE	X	OD	O	Y	B	Bolts
SFW	23/32	4.875	4.690	3/8"	3.122	3 @ 3/8" X 2
EW	31/32	6.625	6.014	1/2"	3.834	3 @ 1/2" X 2 3/4"
FW	1 7/32	8.625	7.930	1/2"	4.434	3 @ 9/16" X 3 5/8"
JSW	1 7/32	8.625	7.930	1/2"	5.145	3 @ 5/8" X 2 1/2"
MSW	1 15/32	10.750	9.875	1/2"	6.491	4 @ 3/4" X 3"
NSW	1 15/32	10.750	9.875	1/2"	6.987	4 @ 7/8" X 3 1/2"
PSW	1 21/32	11.750	11.50	5/8"	8.237	4 @ 1 X 4 1/2"
WSW	2 15/32	16.250	16.00	5/8"	10.432	4 @ 1 1/8" X 5"

KEYWAY DIMENSIONS

	STOCK BORES	BUSHING KEYWAY	KEY SUPPLIED
15	5/8, 3/4, 7/8 1, 1-1/8, 1-3/16, 1-1/4 1-7/16, 1-1/2	3/16 X 3/32 1/4 X 1/8 3/8 X 1/8	NONE NONE 3/8 X 5/16 X 1- 1/8
20	3/4 1, 1-1/8, 1-3/16, 1-1/4 1-7/16, 1-1/2, 1-11/16 1-15/16, 2	3/16 X 3/32 1/4 X 1/8 3/8 X 3/16 1/2 X 3/16	NONE NONE NONE 3/8 X 5/16 X 1- 1/8
25	1, 1-3/16, 1-1/4 1-7/16, 1-1/2, 1-11/16 1-15/16, 2, 2-3/16 2-7/16	1/4 X 1/8 3/8 X 3/16 1/2 X 1/4 5/8 X 1/8	NONE NONE NONE 5/8 X 7/16 X 1- 3/4
30	1-7/16, 1-1/2 1-15/16, 2, 2-3/16 2-7/16, 2, 2-3/16 2-15/16	3/8 X 3/16 1/2 X 1/4 5/8 X 5/16 3/4 X 3/16	NONE NONE NONE 3/4 X 9/16 X 2
35	1-15/16, 2, 2-3/16 2-7/16, 2-11/16 2-15/16 3-7/16	1/2 X 1/4 5/8 X 5/16 3/4 X 3/8 7/8 X 5/16	NONE NONE NONE 7/8 X 3/4 X 2-1/2
40	2-7/16 2-15/16 3-7/16 3-15/16	5/8 X 5/16 3/4 X 3/8 7/8 X 7/16 1 X 3/8	NONE NONE NONE 1 X 7/8 X 2-3/4
45	3-7/16 3-15/16 4-7/16	7/8 X 7/16 1 X 1/2 1 X 3/8	NONE NONE 1 X 7/8 X 3-1/4
50	3-15/16, 4-7/16 4 15/16	1 X 1/2 1 1/4 X 5/8	NONE NONE
60	5-7/16, 5-1/2 5 15/16, 6	1 1/4 X 5/8 1-1/2 X 3/4	NONE NONE
70	6-7/16, 6-1/2 6 15/16, 7	1-1/2 X 3/4 1-3/4 X 3/4	NONE NONE
80	7-1/2 7- 15/16, 8	1-3/4 X 3/4 2 X 3/4	NONE NONE
100	8-1/2, 9 9- 7/16, 9-1/2	2 X 3/4 2 1/2 X 7/8	NONE NONE
120	10-1/2, 11 11-1/2, 12	2 1/2 X 7/8 3 X 1	NONE NONE

XT BUSHINGS



RECOMMENDED WRENCH TORQUE

XT HUB SIZE	WRENCH TORQUE (LBS.)	WRENCH LENGTH (INCHES)	WRENCH PULL (LBS.)
15	360	6	60
20	720	12	60
25	900	12	75
30	1620	12	135
35	2700	15	180
40	3600	30	180
45	5400	20	180
50	7200	36	200
60	1620	12	135
70	2700	15	180
80	3600	30	180
100	5400	20	180
120	7200	36	200

NOTE: Bushings and cap screws must be periodically checked for proper seating at least once after installation and then checked periodically.



Heavy Duty Drum Pulleys

Tapered QD Bushings Included

Dia	QD Hub	XT Hub	12" Face Lbs.	14" Face Lbs.	16" Face Lbs.	18" Face Lbs.	20" Face Lbs.	22" Face Lbs.	24" Face Lbs.	26" Face Lbs.	30" Face Lbs.	32" Face Lbs.	36" Face Lbs.
10"	SF	25	45	103	107	110	119	129	147	155	162	170	181
	E	30	57	114	117	121	130	139	168	176	183	189	193
	F	35	67	123	128	132	139	148	173	184	191	199	207
12"	SF	25	55	125	130	134	146	156	192	201	210	219	234
	E	30	67	139	143	148	159	169	214	223	232	239	254
	F	35	78	149	153	157	167	179	222	231	240	249	282
14"	SF	25	62	186	192	199	215	233	243	252	262	272	293
	E	30	73	205	211	218	234	251	251	271	282	292	210
	F	35	85	214	220	227	243	259	269	279	290	300	318
	JS	35	118	220	227	234	248	285	274	285	302	312	329
16"	SF	25	72	210	218	225	253	271	284	295	306	317	342
	E	30	85	240	247	255	274	294	305	316	328	340	363
	F	35	95	249	256	263	284	302	314	325	337	348	371
	JS	40	134	262	289	277	296	315	326	338	349	361	383
18"	SF	25	97	234	242	251	285	305	326	340	352	365	395
	E	30	108	260	269	277	316	340	352	365	377	391	419
	F	35	118	270	278	288	326	348	361	373	387	399	427
	JS	40	137	285	294	302	325	347	428	445	460	475	506
	MS	50	181	327	337	345	366	388	469	485	501	516	546
20"	SF	25	111	264	273	284	322	357	391	405	419	434	468
	E	30	122	275	285	295	334	358	402	416	430	445	479
	F	35	133	286	295	305	344	365	411	424	439	453	488
	JS	40	150	302	311	320	438	466	485	502	519	537	573
	MS	50	200	350	359	359	464	494	512	529	547	564	600
24"	SF	25	141	319	330	342	383	411	461	477	494	511	558
	E	30	152	342	353	364	405	434	480	497	514	530	577
	F	35	164	352	363	374	415	433	469	506	523	540	587
	JS	40	181	450	464	473	520	555	576	597	618	640	669
	MS	50	240	506	520	535	575	610	631	653	673	695	743
	NS	60	316	538	552	566	606	641	748	773	824	849	906
30"	E	30	251	542	559	576	766	818	850	880	912	944	1032
	F	35	261	552	569	587	777	828	860	890	922	954	1042
	JS	40	277	567	584	602	789	842	872	904	935	965	1055
	MS	50	308	598	615	632	817	869	901	932	963	995	1081
	NS	60	342	630	648	665	848	901	931	983	995	1025	1111
36"	F	35	396	830	856	880	991	1054	1091	1128	1166	1204	1326
	JS	40	412	846	870	896	1005	1067	1104	1141	1170	1216	1338
	MS	50	401	875	900	925	1032	1094	1132	1170	1207	1244	1385
	NS	60	395	907	932	957	1064	1128	1163	1201	1238	1275	1394
	PS	70	420	983	1008	1033	1136	1199	1238	1274	1311	1348	1465
42"	JS	40	464	1131	1161	1089	1335	1408	1451	1491	1538	1582	1742
	MS	50	483	1160	1189	1218	1362	1435	1478	1522	1566	1609	1768
	NS	60	505	1191	1220	1250	1392	1465	1509	1552	1595	1639	1796
	PS	70	558	1265	1293	1323	1463	1535	1891	1949	2008	2067	2257
48"	JS	40	569	1403	1436	1468	1944	2055	2121	2188	2255	2322	2570
	MS	50	589	1413	1464	1496	1972	2083	2149	2216	2283	2350	2596
	NS	60	611	1462	1494	1528	2001	2112	2180	2246	2313	2380	2627
	PS	70	662	1535	1568	1601	2071	2182	2249	2315	2383	2449	2892
54"	MS	50	705	1953	2003	2053	2336	2481	2536	2811	2856	2761	3068
	NS	60	726	1985	2035	2089	2385	2491	2565	2641	2715	2791	3097
	PS	70	778	2058	2108	2158	22435	2560	2263	2710	2785	2880	3162
60"	MS	50	832	2170	2226	2281	2595	2735	2817	2901	2984	2066	3409
	NS	60	853	2304	2360	2415	2759	2893	2980	3064	3147	3230	3602
	PS	70	905	2378	2433	2489	2828	2967	3050	3133	3216	3300	3667

FOR MINE DUTY DRUMS CONTACT FACTORY

All weights are approximate; for certified specifications, contact factory



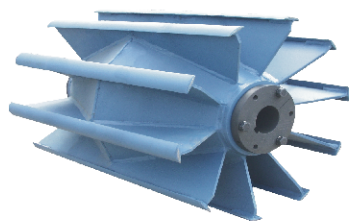
Heavy Duty Drum Pulleys

Tapered QD Bushings Included

Dia	QD Hub	XT Hub	38" Face Lbs.	40" Face Lbs.	42" Face Lbs.	44" Face Lbs.	46" Face Lbs.	51" Face Lbs.	54" Face Lbs.	57" Face Lbs.	60" Face Lbs.	63" Face Lbs.	66" Face Lbs.
10"	SF	25	99	103	107	110	119	129	147	155	162	170	181
	E	30	110	114	117	121	130	139	168	176	183	189	193
	F	35	120	123	128	132	139	148	173	184	191	199	207
12"	SF	25	120	125	130	134	146	156	192	201	210	219	234
	E	30	135	139	143	148	159	169	214	223	232	239	254
	F	35	144	149	153	157	167	179	222	231	240	249	282
14"	SF	25	144	186	192	199	215	233	243	252	262	272	293
	E	30	159	205	211	218	234	251	251	271	282	292	210
	F	35	199	214	220	227	243	259	269	279	290	300	318
	JS	35	213	220	227	234	248	285	274	285	302	312	329
16"	SF	25	162	210	218	225	253	271	284	295	306	317	342
	E	30	165	240	247	255	274	294	305	316	328	340	363
	F	35	195	249	256	263	284	302	314	325	337	348	371
	JS	40	244	262	289	277	296	315	326	338	349	361	383
18"	SF	25	225	234	242	251	285	305	326	340	352	365	395
	E	30	237	260	269	277	316	340	352	365	377	391	419
	F	35	246	270	278	288	326	348	361	373	387	399	427
	JS	40	282	285	294	302	325	347	428	445	460	475	506
	MS	50	306	327	337	345	366	388	469	485	501	516	546
20"	SF	25	255	264	273	284	322	357	391	405	419	434	468
	E	30	266	275	285	295	334	358	402	416	430	445	479
	F	35	276	286	295	305	344	365	411	424	439	453	488
	JS	40	293	302	311	320	438	466	485	502	519	537	573
	MS	50	341	350	359	359	464	494	512	529	547	564	600
24"	SF	25	315	319	330	342	383	411	461	477	494	511	558
	E	30	330	342	353	364	405	434	480	497	514	530	577
	F	35	341	352	363	374	415	433	469	506	523	540	587
	JS	40	356	450	464	473	520	555	576	597	618	640	669
	MS	50	414	506	520	535	575	610	631	653	673	695	743
	NS	60	524	538	552	566	606	641	748	773	824	849	906
30"	E	30	524	542	559	576	766	818	850	880	912	944	1032
	F	35	534	552	569	587	777	828	860	890	922	954	1042
	JS	40	550	567	584	602	789	842	872	904	935	965	1055
	MS	50	580	598	615	632	817	869	901	932	963	995	1081
	NS	60	613	630	648	665	848	901	931	983	995	1025	1111
36"	F	35	806	830	856	880	991	1054	1091	1128	1166	1204	1326
	JS	40	820	846	870	896	1005	1067	1104	1141	1170	1216	1338
	MS	50	850	875	900	925	1032	1094	1132	1170	1207	1244	1385
	NS	60	882	907	932	957	1064	1128	1163	1201	1238	1275	1394
	PS	70	958	983	1008	1033	1136	1199	1238	1274	1311	1348	1465
42"	JS	40	1103	1131	1161	1089	1335	1408	1451	1491	1538	1582	1742
	MS	50	1131	1160	1189	1218	1362	1435	1478	1522	1566	1609	1768
	NS	60	1162	1191	1220	1250	1392	1465	1509	1552	1595	1639	1796
	PS	70	1236	1265	1293	1323	1463	1535	1891	1949	2008	2067	2257
48"	JS	40	1369	1403	1436	1468	1944	2055	2121	2188	2255	2322	2570
	MS	50	1397	1413	1464	1496	1972	2083	2149	2216	2283	2350	2596
	NS	60	1429	1462	1494	1528	2001	2112	2180	2246	2313	2380	2627
	PS	70	1501	1535	1568	1601	2071	2182	2249	2315	2383	2449	2892
54"	MS	50	1664	1953	2003	2053	2336	2481	2536	2811	2856	2761	3068
	NS	60	1695	1985	2035	2089	2385	2491	2565	2641	2715	2791	3097
	PS	70	1769	2058	2108	2158	22435	2560	2263	2710	2785	2880	3162
60"	MS	50	1862	2170	2226	2281	2595	2735	2817	2901	2984	2066	3409
	NS	60	2492	2304	2360	2415	2759	2893	2980	3064	3147	3230	3602
	PS	70	2323	2378	2433	2489	2828	2967	3050	3133	3216	3300	3667

FOR MINE DUTY DRUMS CONTACT FACTORY

All weights are approximate; for certified specifications, contact factory



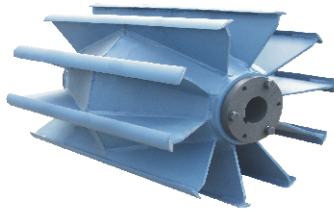
Heavy Duty Wing Pulleys

Tapered QD Bushings Included

Dia	QD Hub	XT Hub	12"	14"	16"	18"	20"	22"	24"	26"	30"	32"	36"
			Face Lbs.	Face Lbs.	Face Lbs.	Face Lbs.	Face Lbs.	Face Lbs.	Face Lbs.	Face Lbs.	Face Lbs.	Face Lbs.	Face Lbs.
8"	SF	20, 15	32	36	40	44	48	52	56	60	68	72	81
10"	SF	25	40	45	50	55	60	66	71	77	88	93	104
	E	30	49	54	59	65	70	75	81	86	97	102	112
	F	35	62	63	68	73	80	84	89	95	105	111	121
12"	SF	25	50	57	64	71	80	87	94	101	116	123	138
	E	30	59	68	73	80	87	94	101	108	122	130	144
	F	35	72	75	82	89	96	103	110	117	132	149	154
14"	SF	25	61	70	79	88	97	106	115	124	143	152	170
	E	30	69	79	87	96	104	111	121	130	149	157	175
	F	35	83	87	96	104	113	121	131	140	157	166	185
	JS	40	104	106	111	120	129	137	146	154	171	181	197
16"	SF	25	69	80	90	99	109	119	131	141	161	171	193
	E	30	78	87	97	107	116	126	137	147	167	177	198
	F	35	91	96	105	115	125	135	146	155	175	186	206
	JS	40	113	106	121	131	141	150	160	169	190	199	219
18"	SF	25	87	100	112	125	138	151	164	177	204	217	245
	E	30	94	106	118	131	143	153	168	182	207	220	247
	F	35	107	113	125	138	151	166	174	189	214	227	253
	JS	40	130	135	141	152	164	176	189	201	226	239	263
	MS	45	158	163	168	181	194	206	219	232	258	270	297
20"	SF	25	110	125	142	158	174	192	206	224	258	275	309
	E	30	116	132	148	163	180	196	212	228	261	277	311
	F	35	131	139	155	170	187	203	219	236	268	285	317
	JS	40	152	161	169	185	200	215	232	248	279	296	327
	MS	45	181	189	197	212	228	245	261	277	310	327	360
24"	SF	25	168	194	219	246	272	289	325	353	406	434	488
	E	30	170	195	220	248	271	297	332	359	409	426	479
	F	35	185	199	223	249	274	299	324	351	420	530	480
	JS	40	232	245	259	283	307	332	356	380	430	455	505
	MS	45	254	266	278	303	326	351	375	400	449	473	523
	NS	50	274	285	325	338	362	367	410	435	485	509	559
30"	E	30	213	244	275	307	339	371	403	436	501	533	599
	F	35	231	248	279	311	343	374	405	439	508	663	601
	JS	40	289	308	324	353	384	414	445	478	538	569	631
	MS	45	317	333	348	379	408	449	469	500	561	592	654
	NS	50	376	391	407	422	453	483	513	543	606	636	699

FOR MINE DUTY WINGS CONTACT FACTORY

All weights are approximate; for certified specifications, contact factory



Heavy Duty Wing Pulleys

Tapered QD Bushings Included

Dia	QD Hub	XT Hub	38"	40"	42"	44"	46"	51"	54"	57"	60"	63"	66"
			Face Lbs.	Face Lbs.	Face Lbs.	Face Lbs.	Face Lbs.	Face Lbs.	Face Lbs.	Face Lbs.	Face Lbs.	Face Lbs.	Face Lbs.
8"	SF	20, 15	85	92	97	100	117	116	123	130	136	143	150
10"	SF	25	109	115	121	125	147	145	153	163	170	179	187
	E	30	117	123	130	136	142	157	167	176	186	194	204
	F	35	127	113	140	147	154	170	180	190	200	210	220
12"	SF	25	146	153	161	168	176	191	205	217	227	274	287
	E	30	151	158	166	172	189	206	320	338	355	373	393
	F	35	161	168	177	183	197	216	321	339	356	374	394
14"	SF	25	180	189	196	207	216	239	380	401	422	443	465
	E	30	185	195	203	211	220	243	373	393	414	435	455
	F	35	194	203	213	220	230	252	375	395	416	436	456
	JS	40	206	214	225	232	241	262	373	393	413	432	452
16"	SF	25	203	214	225	235	245	271	434	459	482	507	531
	E	30	208	218	229	239	249	275	427	450	473	497	521
	F	35	217	227	239	248	258	284	428	452	475	499	521
	JS	40	230	239	251	259	269	294	427	449	472	494	516
18"	SF	25	258	271	285	298	312	346	488	516	543	570	547
	E	30	259	272	286	299	312	345	480	507	532	559	540
	F	35	266	279	293	306	318	352	482	509	534	561	544
	JS	40	276	289	303	314	326	358	480	505	531	555	545
	MS	45	310	323	340	349	362	395	504	529	554	579	579
20"	SF	25	326	344	361	377	395	438	543	573	603	633	664
	E	30	327	345	362	377	395	437	533	563	592	621	651
	F	35	335	351	368	388	401	443	536	565	594	623	652
	JS	40	344	360	378	393	408	439	533	561	590	617	645
	MS	45	377	394	413	427	444	486	560	588	616	644	672
24"	SF	25	539	565	593	620	648	717	757	796	844	885	927
	E	30	529	556	584	608	634	701	741	787	828	868	909
	F	35	529	556	584	608	634	700	740	787	827	867	906
	JS	40	530	566	584	606	631	695	746	796	826	899	907
	MS	45	548	573	602	623	648	730	771	812	854	896	936
	NS	50	583	609	639	659	708	779	823	868	913	959	1007
30"	E	30	662	695	730	760	793	876	926	964	1035	1065	1136
	F	35	662	669	730	760	793	875	924	963	1034	1084	1135
	JS	40	664	695	730	767	789	868	932	982	1033	1083	1134
	MS	45	685	717	752	779	810	912	963	1015	1068	1120	1174
	NS	50	729	761	799	824	884	974	1029	1064	1141	1196	1259

FOR MINE DUTY WINGS CONTACT FACTORY

All weights are approximate; for certified specifications, contact factory

UNITIZED END DISC PULLEYS



**The First Engineered Class Pulley
At CEMA Class Prices!**

- Completely Machined End Disc
- Engineered End Disc with Unitized Hub
- Accommodates Standard Bushing Systems



**The Quality is
Under the Rim!**

**All Steel Bushings
Superior Fatigue Life**

**Reverse Mounted End Disc System
Engineered to Accomodate Shaft Deflection
Available in Heavy Duty or Mine Duty**



CROWN DRUM PULLEYS
CROWN WING PULLEYS
LAGGING
SPIRAL WINGS
TAKE-UPS
SHAFTING
BEARING ASSEMBLIES
SPECIALS