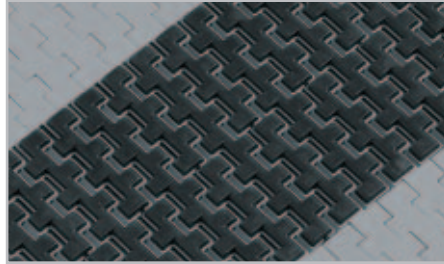


High friction inclines HabasitLINK® GripTop modular belts



Do you want

- to reduce product damage
- to reduce downtime and overall maintenance
- to increase belt life
- to increase throughput

The success behind HabasitLINK®

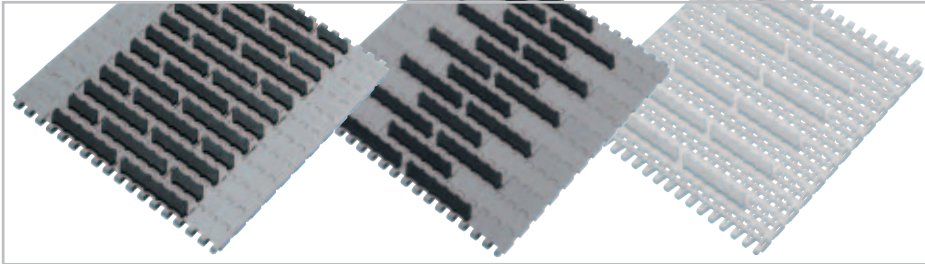
Based on our comprehensive experience and our leadership position in traditional fabric-based belting, Habasit has developed a wide range of HabasitLINK® modular belts. This trendsetting product line completes our offer as a single source supplier and partner for your success. With the GripTop modular belts, Habasit offers the most complete high friction solution in the belting world.



GripTop patterns, product range

GripTop selection

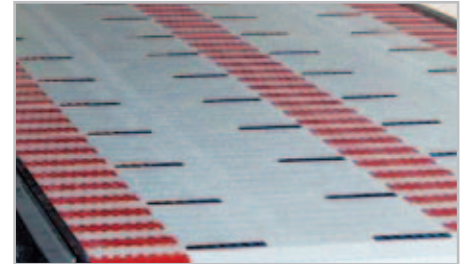
Available GripTop patterns



GripTop M2520
straight indent

GripTop M2520
staggered indent

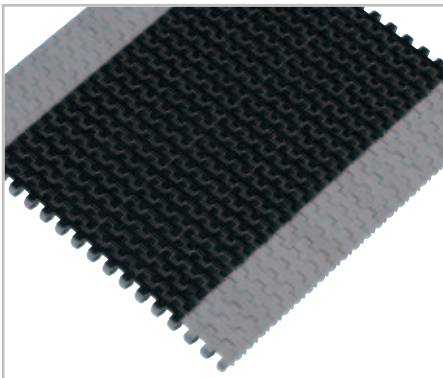
GripTop M2533
every 2nd row



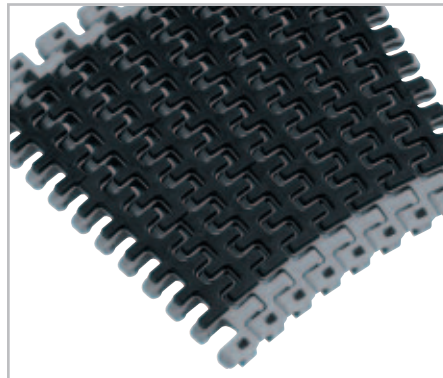
GripTop M5015 with red position
marks (application example)

GripTop range

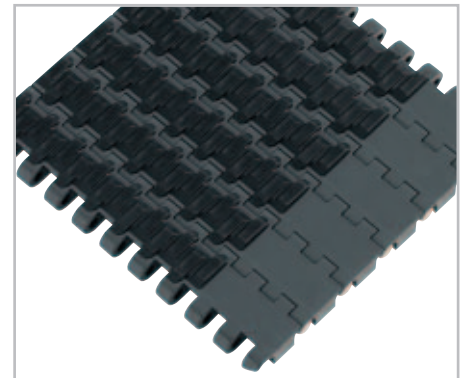
M1220* M2520* M2540 M2620 M3843 M5015*	Belt material:	PP white with white GripTop material PP gray with black GripTop material POM with GripTop material is available for M2520, M2620, M3843 and M5015
	Belt style:	* Indicated belts are available in Flat Top and Flush Grid belt styles
	Rubber material:	TPE (Thermoplastic Elastomer), Standard Shore A50
	Special rubber materials:	For specific applications also Shore A80, UV-resistant, high temperature and flame-retardant rubber is available



M1220 GripTop



M2540 Radius GripTop

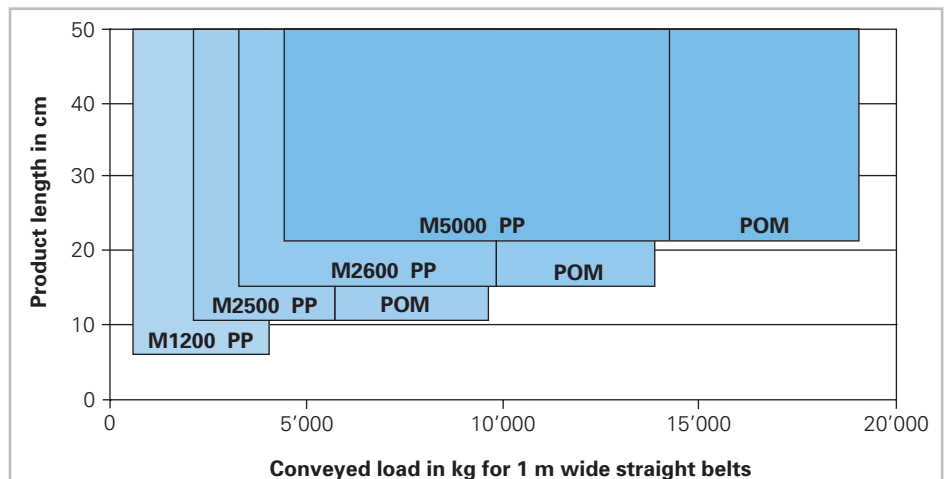


M2620 GripTop

GripTop belt selection

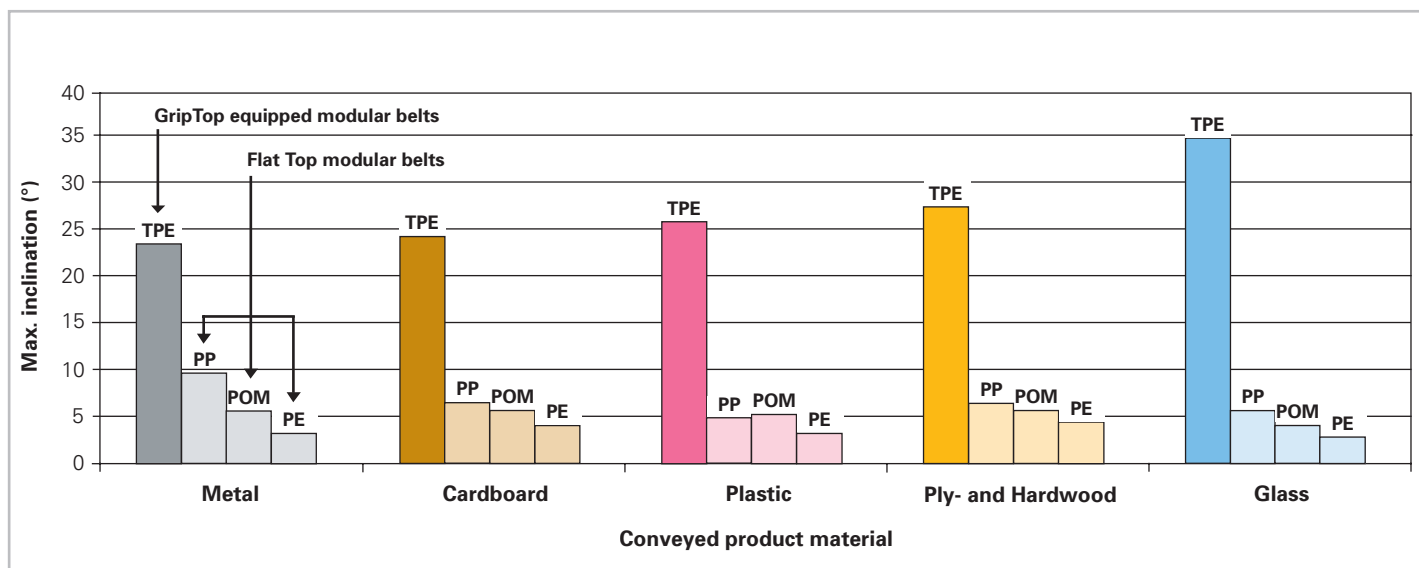
Recommended belt type and belt material for expected conveyed load and product length for smooth transfer based on smallest available sprockets and min. distance between shafts.

Note: The polygon effect can influence the transfer quality.



Inclination angle

Maximum inclination for GripTop belts compared to standard materials



The values of maximum inclination are valid for dry conditions and worn rubber surfaces, flat product surface and belt temperature environment of 23°C/73°F.

Contamination, different temperature and surface nature can influence the maximum inclination.

Verification tests are recommended. For special application please contact a Habasit representative.

Legend

- TPE = Thermoplastic Elastomer
- PP = Polypropylene
- POM = Polyoxymethylene
- PE = Polyethylene

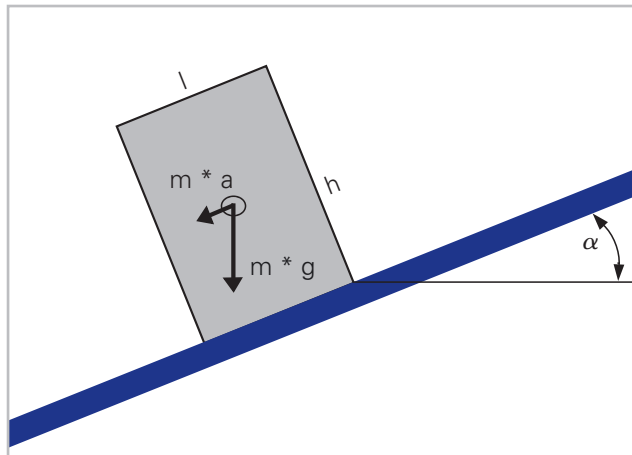
GripTop in use



Product stability and acceleration

Max inclination depending on length and height of conveyed product

Relation between inclination α , length and height of conveyed product and acceleration during start and stop. Product is unstable, when its length l reach:
 $l = h * (a/(g * \cos \alpha) + \tan \alpha)$



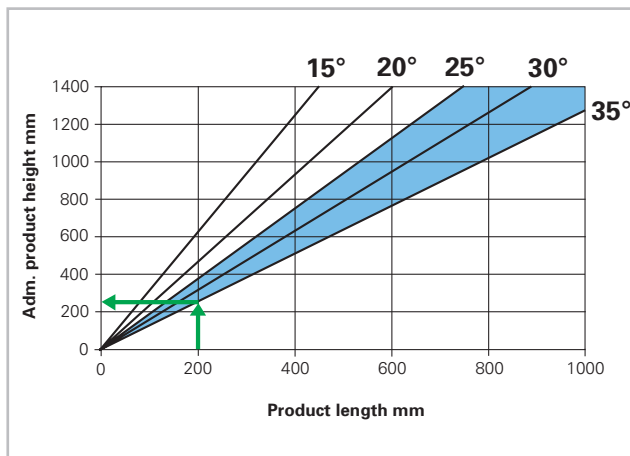
Legend

- α = inclination
- l = product length
- h = product height
- m = product mass
- a = acceleration during start and stop
- g = gravity

Maximum incline with acceleration/deceleration

Low belt acceleration, soft start/controlled start

0.1 – 0.5 m/sec²
 dependent on product length and inclination



- 25° Max. inclination for metal/cardboard
- 35° Max. inclination for glass

Determination example

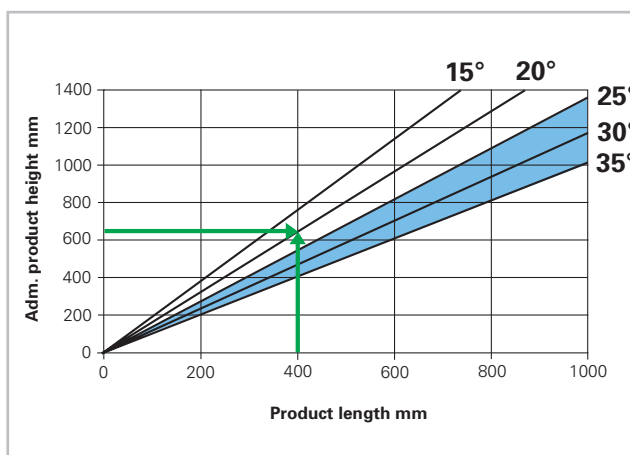
Material: Glass
 Product length: 200 mm
 Inclination: 35°
 Adm. product height: ? mm

Read out result: 260 mm

■ Glass only

High belt acceleration, hard start/motor without regulation

1 – 2 m/sec²
 dependent on product length and inclination



- 25° Max. inclination for metal/cardboard
- 35° Max. inclination for glass

Determination example

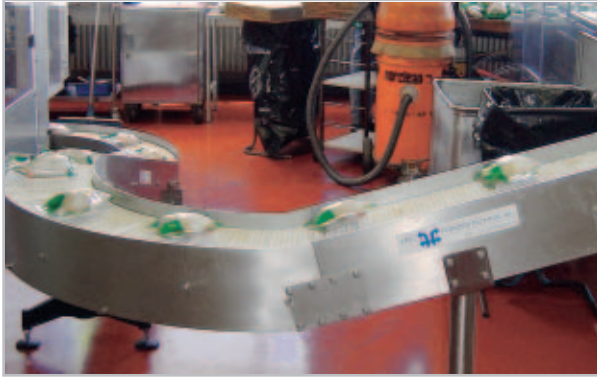
Material: Plastic
 Product length: 400 mm
 Product height: 640 mm
 Adm. inclination: ?°

Read out result: 20°

■ Glass only

Key features of some typical applications

In today's tough market/manufacturing environment, belts just have to run reliably, 24h a day, 365 days a year. HabasitLINK® GripTop has proven in many industries to be a durable and reliable solution. Following a fine selection of references in various industries:



3-dimensional application gives great flexibility and reduced number of transfer points and drives.



Snack food bag very gently conveyed, no tearing of bags as with previous flighted belt.



Recycling paper incline, running 24h daily.



Heavy application with metal sheets proves durability.



Safe 25° decline for slippery heavy packages in a meat plant.



Distribution center incline > 20°.

Austria

Habasis GmbH, Wien
Phone: +43 1 690 66
www.habasis.at

Belgium

Habasis Belgium N.V., Zaventem
Phone: +32 2 725 04 30
www.habasis.be

Canada

Habasis Canada Ltd., Oakville
Phone: +1 905 827 4131
www.habasis.ca

China

Habasis East Asia Ltd., Hong Kong
Phone: +852 2145 01 50
www.habasis.com.hk

Habasis (Shanghai) Co., Ltd.
Shanghai

Phone: +8621 3417 1228
Phone: +8621 3417 1218
www.habasis.com.hk

Czech Republic

Habasis Bohemia spol. s.r.o., Brno
Phone: +4205 41 421 651
www.habasis.cz

France

Habasis France S.A.S., Mulhouse
Phone: +33 389 33 89 03
www.habasis.fr

Germany

Habasis Rossi GmbH,
Eppertshausen
Phone: +49 6071 969 0
www.habasisrossi.de

Hungary

Habasis Hungária Kft., Esztergom
Phone: +36 33 510 610
www.habasis.hu

India

Habasis-lakoka Pvt. Ltd., Coimbatore
Phone: +91 422 262 78 79
www.habasislakoka.com

Italy

Habasis Italiana SpA
Customer Care:
Phone: 199 199 333
For int. calls: +39 0438 911444
www.habasis.it

Japan

Habasis Nippon Co. Ltd., Yokohama
Phone: +81 45 476 03 71
www.habasis.co.jp

Latvia

Habasis Baltic SIA, Daugavpils
Phone: +371 54 074 88
www.habasis.lv

Netherlands

Habasis Netherlands BV, Nijkerk
Phone: +31 33 24 72 030
www.habasis.nl

Norway

Habasis Norge A/S, Oslo
Phone: +47 22 90 92 80
www.habasis.no

Poland

Habasis Polska Sp. zo.o., Katowice
Phone: +48 328 511 000
www.habasis.com

Romania

Habasis Import/Export Romania SRL,
Bucuresti, Phone: +40 21 323 95 65
www.habasis.ro

Russia

Habasis Moscow
Phone: +7 09 59 561 508
www.habasis.ru

Singapore

Habasis Far East Pte. Ltd., Singapore
Phone: +65 6862 55 66
www.habasis.com.sg

Spain

Habasis Hispanica S.A.,
Barberà del Vallès
Phone: +34 93 719 19 12
www.habasis.com

Sweden

Habasis AB, Hindsas
Phone: +46 301 226 00
www.habasis.se

Switzerland

Habasis Schweiz, Reinach
Phone: +41 61 715 15 75
www.habasis.ch

Taiwan

Habasis Rossi (Taiwan) Ltd.
Taipei Hsien
Phone: +886 2 2267 0538
www.habasis.com.tw

Ukraine

Habasis Ukraina, Vinnica
Phone: +38 0432 53 17 35
or +38 0432 53 67 38
www.habasis.ua

United Kingdom and Ireland

Habasis (UK) Ltd., Silsden
Phone: + 44 870 835 9555
www.habasis.co.uk

USA

Habasis Belting Inc., Suwanee,
Georgia, Phone: +1 800 458 6431
www.habasisusa.com

USA (Seamless belts only)

Habasis ABT Inc., Middletown,
Connecticut, Phone: +1 860 632 2211
www.habasisabt.com

Our Partner

Rossi Motoriduttori is one of Europe's largest industry groups for the production and sales of gear reducers, gearmotors, inverters, standard and brake motors.



ROSSI MOTORIDUTTORI
S.p.A. MODENA - I

Via Emilia Ovest 915/A
41100 Modena - Italy
Phone: +39 59 33 02 88
Fax: +39 59 82 77 74
www.rossi-group.com
info@rossi-group.com

Product liability, application considerations

If the proper selection and application of Habasis products are not recommended by an authorized Habasis sales specialist, the selection and application of Habasis products, including the related area of product safety, are the responsibility of the customer.

All indications/information are recommendations and believed to be reliable, but no representations, guarantees, or warranties of any kind are made as to their accuracy or suitability for particular applications. The data provided herein are based on laboratory work with small-scale test equipment, running at standard conditions, and do not necessarily match product performance in industrial use. New knowledge and experiences can lead to modifications and changes within a short time without prior notice.

BECAUSE CONDITIONS OF USE ARE OUTSIDE OF HABASIT'S AND ITS AFFILIATED COMPANIES CONTROL, WE CANNOT ASSUME ANY LIABILITY CONCERNING THE SUITABILITY AND PROCESS ABILITY OF THE PRODUCTS MENTIONED HEREIN. THIS ALSO APPLIES TO PROCESS RESULTS / OUTPUT / MANUFACTURING GOODS AS WELL AS TO POSSIBLE DEFECTS, DAMAGES, CONSEQUENTIAL DAMAGES, AND FURTHER-REACHING CONSEQUENCES.

Headquarters

Habasis AG
Römerstrasse 1
CH-4153 Reinach, Switzerland
Phone +41 61 715 15 15
Fax +41 61 715 15 55
E-mail info@habasis.com
www.habasis.com

Registered trademarks
Copyright Habasis AG
Subject to alterations
Printed in Switzerland
Publication data:
4065FLY.MOD-en0306HQR