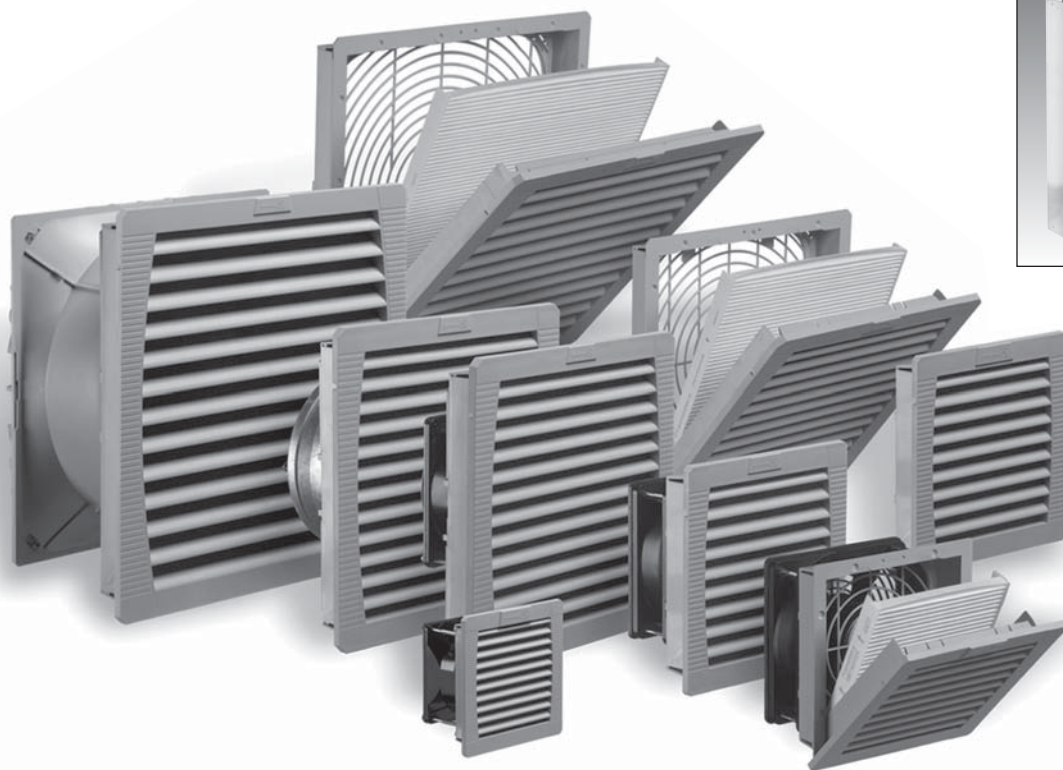
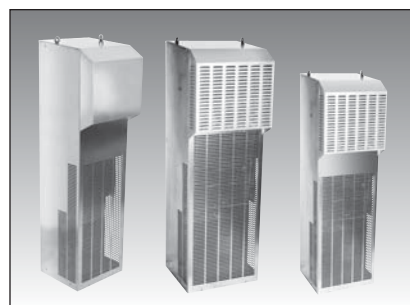
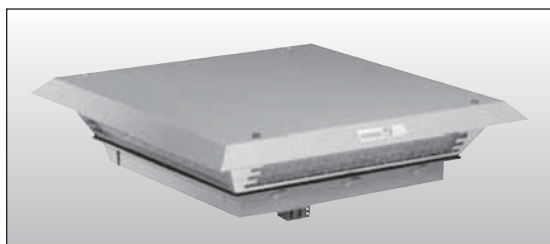




HAMMOND MANUFACTURING™



NEW NEMA Type 12 FilterFan® THE 4TH GENERATION

Hammond Manufacturing Company Limited
394 Edinburgh Rd North, Guelph, ON N1H 1E5
CANADA

Tel: (519) 822 - 2960

Fax: (519) 822 - 0715

Les Fabrications Hammond (Quebec) Inc.
4240 Rue Seré, St. Laurent, Quebec H4T 1A6
CANADA

Tel: (514) 343-9010

Fax: (514) 343-9941

Hammond Manufacturing Company Inc.
475 Cayuga Rd., Cheektowaga, NY 14225
USA

Tel: (716) 630-7030

Fax: (716) 630-7042

World Class, Feature-Laden NEMA Type 12 UL Recognized Filter

Compatible:

Use existing cutout dimensions from current PF series

New Size allows mounting on 10" deep enclosure

Performance:

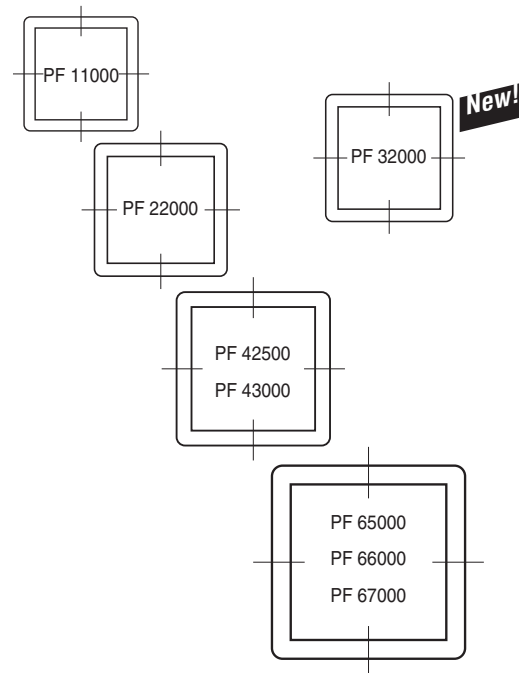
Maintains high airflow with NEMA Type 12 protection

High service life fluted filter

Voltage range:

24v DC, 115v AC, 230v AC, 460v AC

Pfannenberg PF Series



Innovation from a Global Company

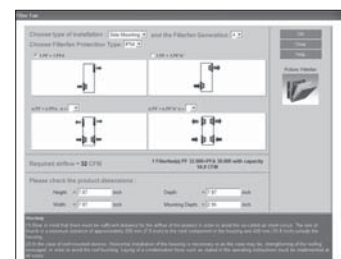


Pfannenberg is one of the few companies in the world to develop and manufacture a wide range of industrial thermal products, from facilities both in Europe and the USA.



Hammond HDC inventories products for fast shipments throughout North America in addition to local stock from a broad Authorized Distributor base.

Download your free
Thermal Sizing Software:
www.hammfg.com/downloads.htm



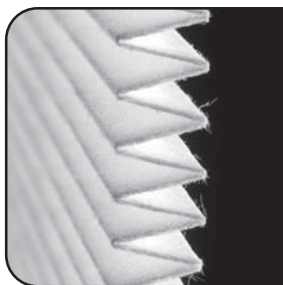
NEMA Type 12 Filterfans®

Features/Benefits:

Patented four-corner “click & fit” system – Enhancing our traditional “click & fit” system, we created an easier to assemble and tighter seal against multiple gauge enclosure sizes.



Special Fluted Filter – This special Type 12 filter increases time between maintenance by three times and allows for greater CFM in dirty environments.



True hardware-free mounting – Our Filterfans do not require any screws to create the pressure on our gasket material to maintain a Type 12 seal against the enclosure. Removing these screws reduce the labor time to mount the Filterfans by greater than 200%.



Easy to change filter – The patented hinge system allows for a quick, hands-free change. This reduces the number of lost and damaged grills when they are placed on floors and carried away from the machine.

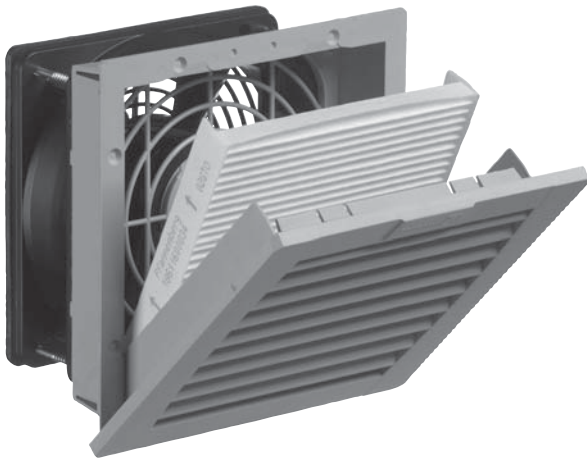


UL tested NEMA Type 12 rating - Our Filterfans are tested by UL to UL 50 Type 12 and NITW2 categories allowing Integrators to maintain the enclosure ratings of the enclosure while maintaining the high CFM ratings of our original Filterfans.



For additional information please visit us at: www.hammfg.com

Filterfan PF 11000-22000 / Exhaust Filter PFA 10000-20000



Features

- Maintains a UL Tested NEMA Type 12 seal against enclosure
 - UL Recognized to UL 508a, category NITW2/8, UL File #E175229
 - Patented "Click & Fit" design provides a hardware free installation!
 - Plastic made from strong, heat resistant (ABS-FR), UL 94 VO fire approved material
 - Fan motor is CSA approved
- Options: Black grills



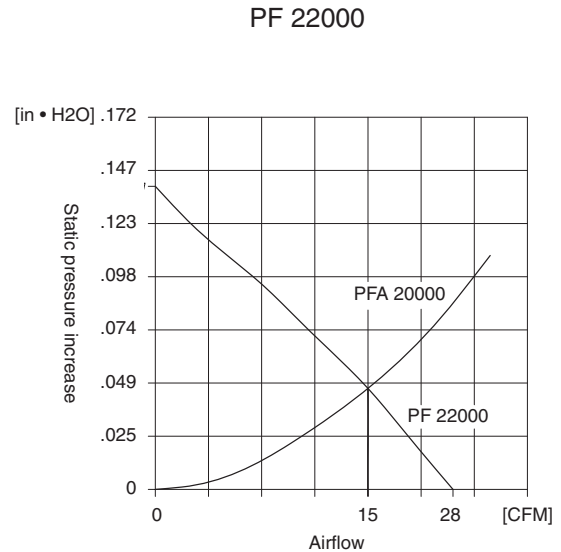
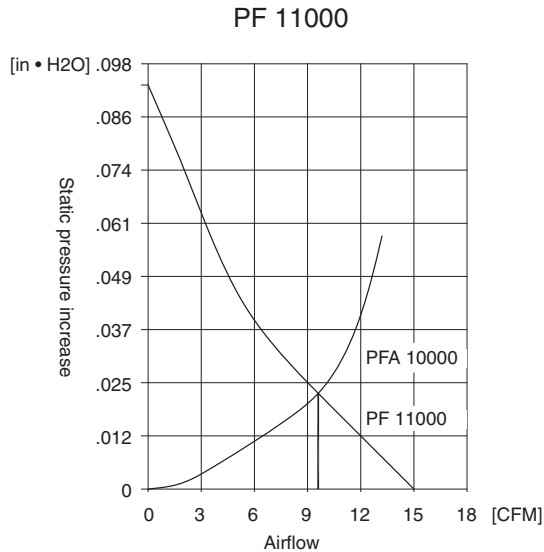
| Part Number | Voltage | Power | Mating Exhaust Filter | Ship Wt. lbs. |
|-----------------|---------|-------|-----------------------|---------------|
| PF11000T12LG | 115V | 11W | PFA10000LG | 1.5 |
| PF11000T12LG230 | 230V | 11W | PFA10000LG | 1.5 |
| PF11000T12LG24 | 24V | 2W | PFA10000LG | 1.5 |
| PF22000T12LG | 115V | 20W | PFA20000LG | 2.0 |
| PF22000T12LG230 | 230V | 18W | PFA20000LG | 2.0 |
| PF22000T12LG24 | 24V | 5W | PFA20000LG | 2.0 |

| Airflow data | PF 11000 | PF 22000 | PFA 1-20000 |
|-----------------------------------------|------------------------|------------------------|---------------------|
| Filter material | Type 12 filter mat | Type 12 filter mat | Type 12 filter mat |
| Unimpeded airflow | 17 CFM | 38 CFM | - |
| Capacity free-flow | 10 W/K | 21 W/K | - |
| Airflow in combination | 11 CFM | 28 CFM | - |
| (Filterfan + Exhaust Filter) | (PF 11000 + PFA 10000) | (PF 22000 + PFA 20000) | |
| Capacity in combination | 6 W/K | 15 W/K | - |
| (Filterfan + Exhaust Filter) | (PF 11000 + PFA 10000) | (PF 22000 + PFA 20000) | |
| Max. static pressure (Airflow = 0 m3/h) | 38 Pa | 57 Pa | - |
| Filtration efficiency | 88% | 91% | 88/91% |
| Filter material grade | G 3 (DIN EN 779) | G 4 (DIN EN 779) | G3/ G4 (DIN EN 779) |
| Duty cycle | 100% | 100% | |

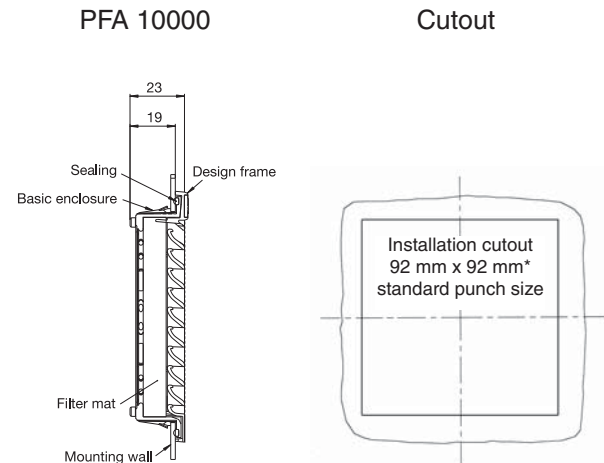
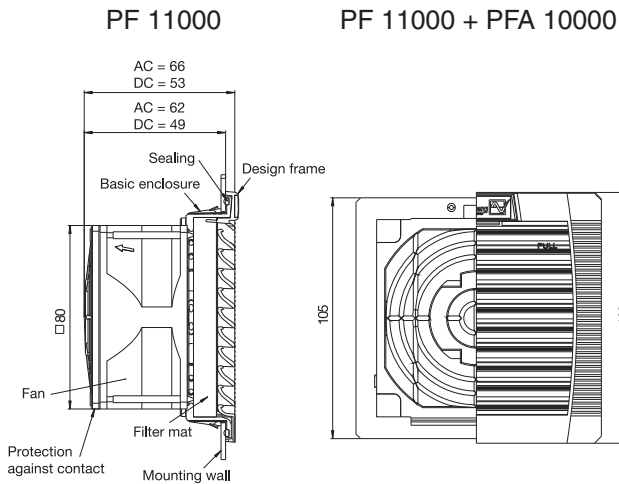
| Technical data | PF 11000 AC | PF 11000 DC | PF 22000 AC | PF 22000 DC | PFA 10000 PFA 20000 |
|-------------------------------------------------------------------|--------------------------------------------------------------------------|----------------|-----------------|----------------|-----------------------------------|
| Outside dimensions in mm (height x width x installation depth) | 109 x 109 x 62 | 109 x 109 x 49 | 145 x 145 x 70 | 145 x 145 x 64 | 109 x 109 x 26/ 145 x 145 x 26 |
| Bearing type | sleeve bearings | ball bearings | sleeve bearings | ball bearings | - |
| Fitting position | vertical | any | vertical | any | - |
| Construction | housing and guard of sprayed thermoplastic, self-extinguishing, UL 94 VO | | | | |
| Weight | 0.55 kg | 0.16 kg | 0.7 kg | 0.44 kg | 0.06 kg / 0.12 kg |
| Safety protection | in accordance with DIN 31 001 | | | | - |
| Color | RAL 7035, Light Grey | | | | |
| Connection | 2 wires, 310 mm long | | terminal strip | | |
| System of protection | NEMA Type 12, IP 55 (EN 60 529), when installed as specified | | | | |

Filterfan PF 11000-22000 / Exhaust Filter PFA 10000-20000

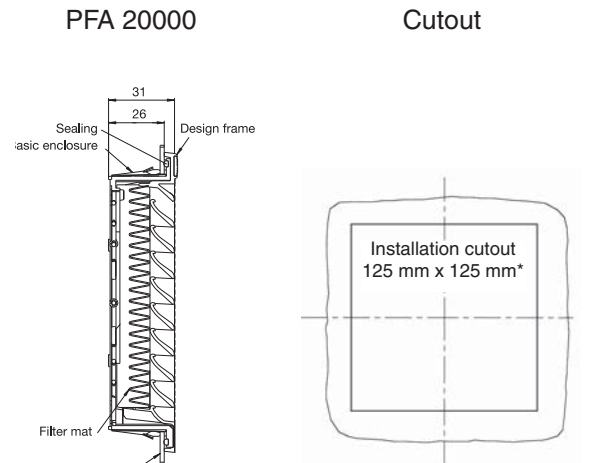
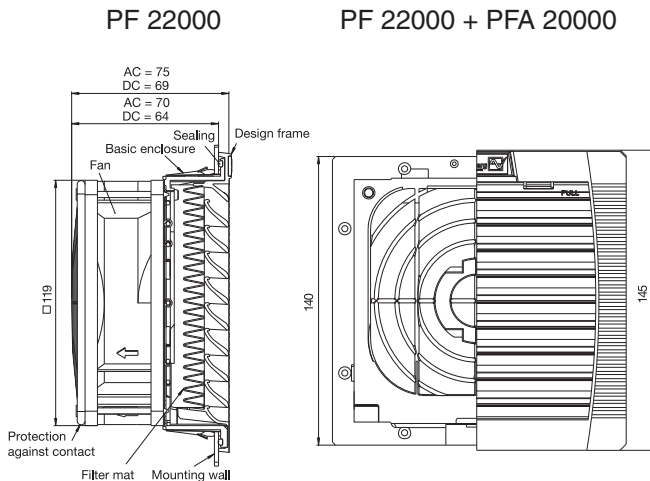
Airflow data:



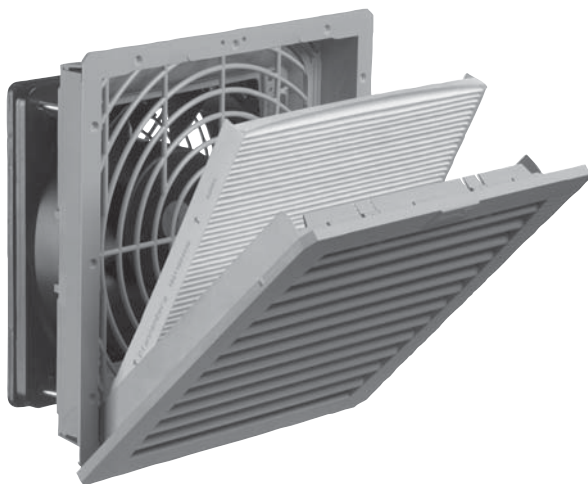
Mechanical data:



Mechanical data:



Filterfan PF 32000 / Exhaust Filter PFA 30000



Features

- Maintains a UL Tested NEMA Type 12 seal against enclosure
 - UL Recognized to UL 508a, category NITW2/8, UL File #E175229
 - Patented "Click & Fit" design provides a hardware free installation!
 - Plastic made from strong, heat resistant (ABS-FR), UL 94 VO fire approved material
 - Fan Motor is CSA Approved
- Options: Black Grills



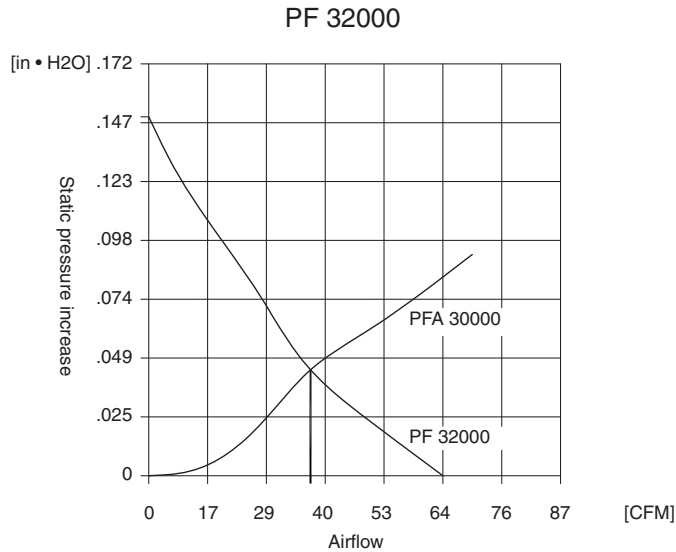
| Part Number | Voltage | Power | Mating Exhaust Filter | Ship Wt. lbs. |
|-----------------|---------|-------|-----------------------|---------------|
| PF32000T12LG | 115V | 20W | PFA30000LG | 3.0 |
| PF32000T12LG230 | 230V | 18W | PFA30000LG | 3.0 |
| PF32000T12LG24 | 24V | 5W | PFA30000LG | 3.0 |

| Airflow data | PF 32000 | PFA 30000 |
|-----------------------------------------|------------------------|--------------------|
| Filter material | Type 12 filter mat | Type 12 filter mat |
| Unimpeded airflow | 65 CFM | - |
| Capacity free-flow | 37 W/K | - |
| Airflow in combination | 38 CFM | - |
| (Filterfan + Exhaust Filter) | (PF 32000 + PFA 30000) | |
| Capacity in combination | 21 W/K | - |
| (Filterfan + Exhaust Filter) | (PF 32000 + PFA 30000) | |
| Max. static pressure (Airflow = 0 m3/h) | 61 Pa | - |
| Filtration efficiency | 91% | 91% |
| Filter material grade | G 4 (DIN EN 779) | G 4 (DIN EN 779) |
| Duty cycle | 100% | - |

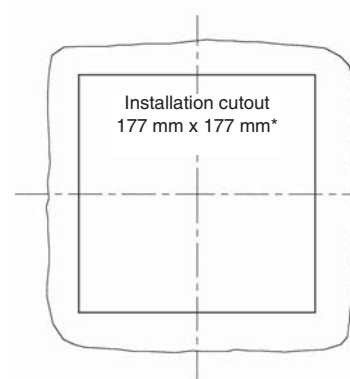
| Technical data | PF 32000 AC | PF 32000 DC | PFA 30000 |
|-------------------------------------------------------------------|--------------------------------------------------------------------------|----------------|----------------|
| Outside dimensions in mm (height x width x installation depth) | 202 x 202 x 87 | 202 x 202 x 81 | 202 x 202 x 34 |
| Bearing type | sleeve bearings | ball bearings | - |
| Fitting position | vertical | any | any |
| Construction | housing and guard of sprayed thermoplastic, self-extinguishing, UL 94 VO | | |
| Weight | 0.87 kg | 0.61 kg | 0.26 kg |
| Safety protection | in accordance with DIN 31 001 | | |
| Color | RAL 7035, Light Grey | | |
| Connections | terminal strip | cage clamp | - |

Filterfan PF 32000 / Exhaust Filter PFA 30000

Airflow data:

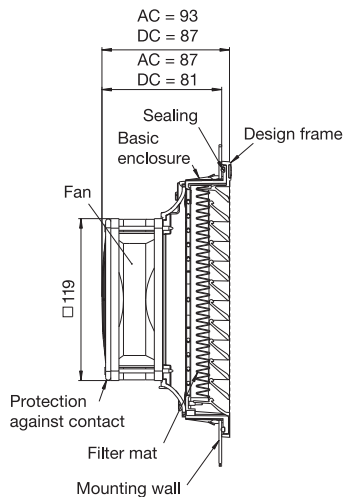


PF 32000 + PFA 30000

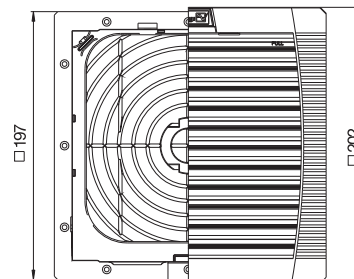


Mechanical data:

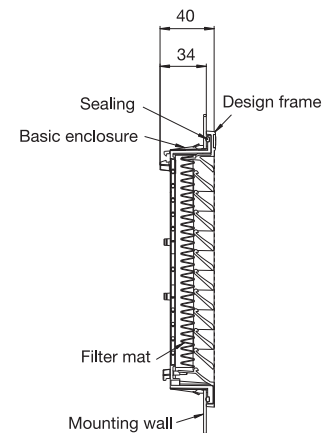
PF 32000



PF 32000 + PFA 30000

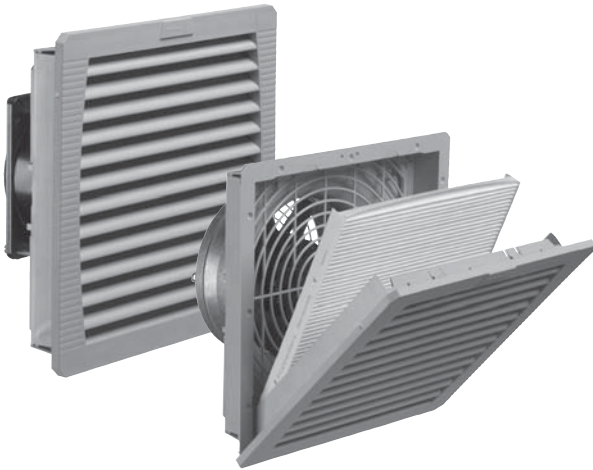


PFA 30000



| Supplementary data | PF 32000 AC | PF 32000 DC | PFA 30000 |
|---------------------------------|--------------------------------------------------------------------------------------------|-------------|-----------|
| Operating temperature | – 15 °C (– 5 °F) to / bis + 55 °C (+ 131 °F) | | |
| Storage temperature | – 20 °C (– 4 °F) to / bis + 70 °C (+ 158 °F) | | |
| Max. relative humidity | 90% | | |
| System of protection | NEMA Type 12, IP 55 (EN 60 529), when installed as specified | | |
| Basic Accessories | parts kit filter mat, user manual radiant heater, fan heater, thermostat, hygrosstat | | |
| Approvals | UL Recognized | | |
| * Tolerance installation cutout | 177 + 1/-0 thickness of material to 2 mm 178 + 1/-0 thickness of material > 2 mm < 3 mm | | |

Filterfan PF 42500, PF 43000 / Exhaust Filter PFA 40000



Features

- Maintains a UL Tested NEMA Type 12 seal against enclosure
 - UL Recognized to UL 508a, category NITW2/8, UL File #E175229
 - Patented "Click & Fit" design provides a hardware free installation!
 - Plastic made from strong, heat resistant (ABS-FR), UL 94 VO fire approved material
 - Fan Motor is CSA Approved
- Options: Black Grills



| Part Number | Voltage | Power | Mating Exhaust Filter | Ship Wt. lbs. |
|-----------------|---------|-------|-----------------------|---------------|
| PF42500T12LG | 115V | 20W | PFA40000LG | 4.0 |
| PF42500T12LG230 | 230V | 18W | PFA40000LG | 4.0 |
| PF42500T12LG24 | 24V | 5W | PFA40000LG | 4.0 |
| PF43000T12LG | 115V | 40W | PFA40000LG | 5.0 |
| PF43000T12LG230 | 230V | 39W | PFA40000LG | 5.0 |
| PF43000T12LG24 | 24V | 12W | PFA40000LG | 5.0 |

| Airflow data | PF 42500 | PF 43000 | PFA 40000 |
|-----------------------------------------|------------------------|------------------------|------------------------|
| Filter material | NEMA Type 12 Filtermat | NEMA Type 12 Filtermat | NEMA Type 12 Filtermat |
| Unimpeded airflow | 94 CFM | 169 CFM | - |
| Capacity free-flow | 53 W/K | 188 W/K | - |
| Airflow in combination | 67 CFM | 142 CFM | - |
| (Filterfan + Exhaust Filter) | (PF 42500 + PFA 40000) | (PF 43000 + PFA 40000) | |
| Capacity in combination | 38 W/K | 69 W/K | - |
| (Filterfan + Exhaust Filter) | (PF 43000 + PFA 40000) | (PF 43000 + PFA 40000) | |
| Max. static pressure (Airflow = 0 m3/h) | 49 Pa | 112 Pa | - |
| Filtration efficiency | 91% | 91% | 91% |
| Filter material grade | G 4 (DIN EN 779) | G 4 (DIN EN 779) | G 4 (DIN EN 779) |
| Duty cycle | 100% | 100% | - |

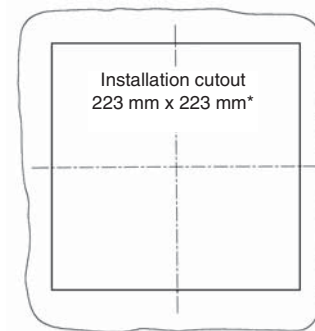
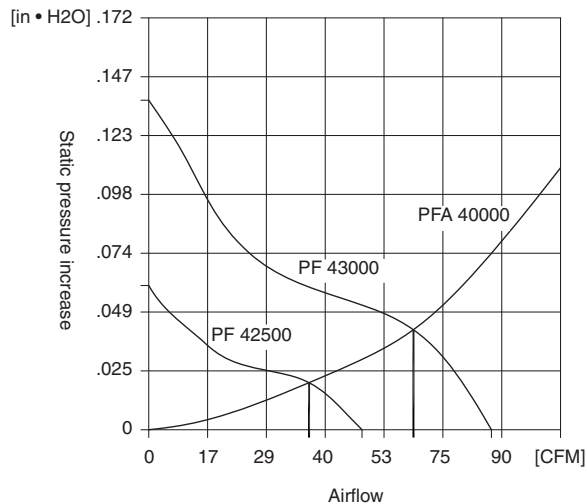
| Technical data | PF 42500 | | PF 43000 | | PFA 40000 |
|-------------------------------------------------------------------|--------------------------------------------------------------------------|----|-------------------------------|----|----------------|
| | AC | DC | AC | DC | |
| Outside dimensions in mm (height x width x installation depth) | 252 x 252 x 97 | | 252 x 252 x 113 | | 252 x 252 x 38 |
| Bearing type / Lagerart | ball bearings | | ball bearings | | - |
| Fitting position / Einbaulage | any, horizontal airflow preferred | | | | any |
| Construction | housing and guard of sprayed thermoplastic, self-extinguishing, UL 94 VO | | | | |
| Weight | 1.18 kg | | 1.67 kg | | 0.46 kg |
| Safety protection | | | in accordance with DIN 31 001 | | - |
| Color | | | RAL 7035, Light Grey | | |
| Connections / Anschlussart | cage clamp | | cage clamp | | - |

Filterfan PF 42500, PF 43000 / Exhaust Filter PFA 40000

Airflow data:

PF 42500 / PF 43000

PF 42500, PF 43000 + PFA 40000

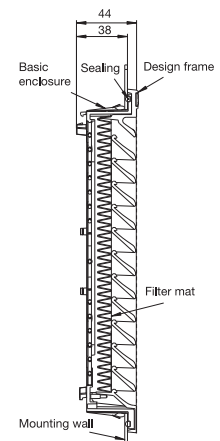
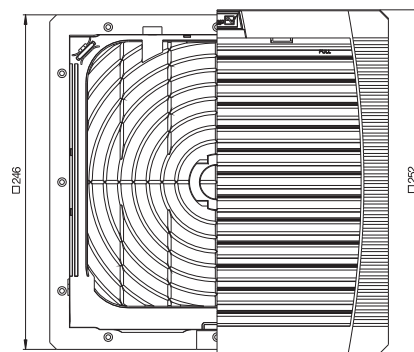
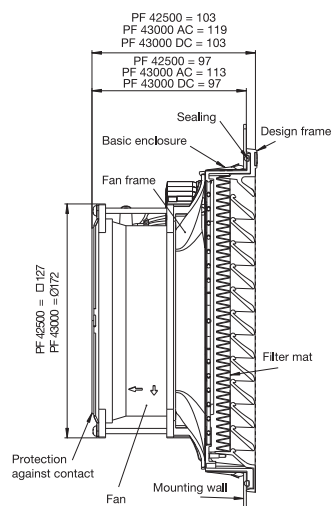


Mechanical data:

PF 42500, PF 43000

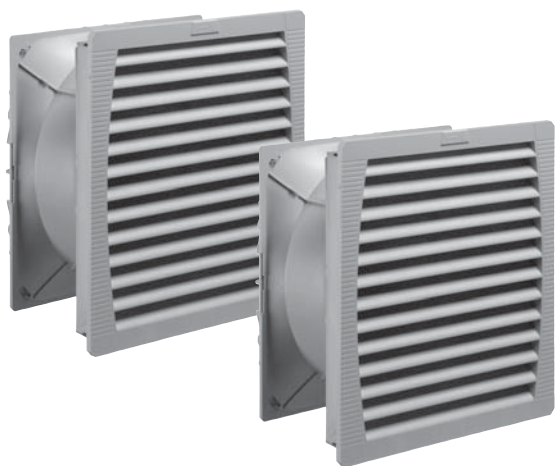
PF 42500 PF 43000, PFA 40000

PFA 40000



| Supplementary data | PF 42500 | PF 43000 | PFA 40000 |
|---------------------------------|--------------------------------------------------------------------------------------------|----------|-----------|
| Operating temperature | - 15 °C (- 5 °F) to / bis + 55 °C (+ 131 °F) | | |
| Storage temperature | - 20 °C (- 4 °F) to / bis + 70 °C (+ 158 °F) | | |
| Max. relative humidity | 90% | | |
| System of protection | NEMA Type 12, IP 55 (EN 60 529), when installed as specified | | |
| Basic Accessories | parts kit filter mat, user manual radiant heater, fan heater, thermostat, hygrostat | | |
| Approvals | UL Recognized | | |
| * Tolerance installation cutout | 177 + 1/-0 thickness of material to 2 mm 178 + 1/-0 thickness of material > 2 mm < 3 mm | | |

Filterfan PF 65000, PF 66000, PF 67000 / Exhaust Filter PFA 60000



Features

- Maintains a UL Tested NEMA Type 12 seal against enclosure
 - UL Recognized to UL 508a, category NITW2/8, UL File #E175229
 - Patented "Click & Fit" design provides a hardware free installation!
 - Plastic made from strong, heat resistant (ABS-FR), UL 94 VO fire approved material
 - Fan Motor is CSA Approved
- Options: Black Grills



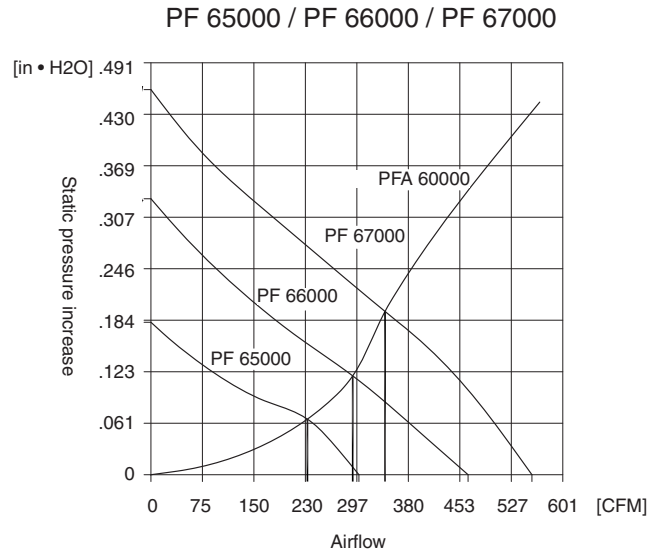
| Part Number | Voltage | Power | Mating Exhaust Filter | Ship Wt. lbs. |
|-----------------|---------|-------|-----------------------|---------------|
| PF65000T12LG | 115V | 90W | PFA60000LG | 7.5 |
| PF65000T12LG230 | 230V | 150W | PFA60000LG | 7.5 |
| PF66000T12LG | 115V | 160W | PFA60000LG | 8.0 |
| PF66000T12LG230 | 230V | 150W | PFA60000LG | 8.0 |
| PF67000T12LG | 115V | 95W | PFA60000LG | 8.0 |
| PF67000T12LG230 | 230V | 214W | PFA60000LG | 8.0 |

| Airflow data | PF 65000 | PF 66000 | PF 67000 | PFA 60000 |
|-----------------------------------------------------|------------------------------------------------------|------------------------------------------------------|------------------------------------------------------|-------------------|
| Filter material | Type 12 Filtermat | Type 12 Filtermat | Type 12 Filtermat | Type 12 Filtermat |
| Unimpeded airflow | 297 CFM | 462 CFM | 560 CFM | |
| Capacity free-flow | IP 54: 160 W/K / 160 W/K IP 55: 168 W/K / 168 W/K | IP 54: 213 W/K / 218 W/K IP 55: 257 W/K / 262 W/K | IP 54: 282 W/K / 292 W/K IP 55: 308 W/K / 317 W/K | - |
| Airflow in combination | 230 CFM | 295 CFM | 368 CFM | - |
| (Filterfan + Exhaust Filter) (PF 65000 + PFA 60000) | | (PF 66000 + PFA 60000) | (PF 67000 + PFA 60000) | |
| Capacity in combination | 127 W/K | 167 W/K | 208 W/K | - |
| (Filterfan + Exhaust Filter) (PF 65000 + PFA 60000) | | (PF 66000 + PFA 60000) | (PF 67000 + PFA 60000) | |
| Max. static pressure (Airflow = 0) | 74 Pa | 134 Pa | 187 Pa | - |
| Filtration efficiency | 91 % | 91 % | 91 % | 91 % |
| Filter material grade | G 4 (DIN EN 779) | G 4 (DIN EN 779) | G 4 (DIN EN 779) | G 4 (DIN EN 779) |
| Duty cycle | 100% | 100% | 100% | - |

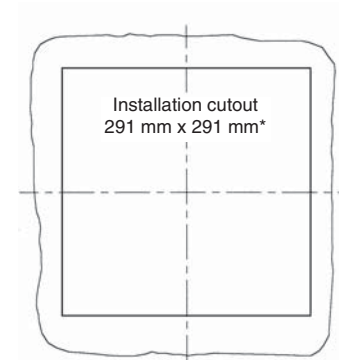
| Technical data | PF 65000 | PF 66000 | PF 67000 | PFA 60000 |
|----------------------------------------------------------------|--------------------------------------------------------------------------|-----------------------------------|-----------------|----------------|
| Outside dimensions in mm (height x width x installation depth) | 320 x 320 x 150 | 320 x 320 x 150 | 320 x 320 x 150 | 320 x 320 x 39 |
| Bearing type | ball bearings | ball bearings | ball bearings | - |
| Fitting position | | any, horizontal airflow preferred | any | |
| Construction | housing and guard of sprayed thermoplastic, self-extinguishing, UL 94 VO | | | |
| Weight | 3.2 kg | 3.2 kg | 3.7 kg | 0.7 kg |
| Safety protection | in accordance with DIN 31 001 | | | |
| Color | RAL 7035, Light Grey | | | |
| Connections | cage clamp | cage clamp | cage clamp | - |

Filterfan PF 65000, PF 66000, PF 67000 / Exhaust Filter PFA 60000

Airflow data:



PF 65000, PF 66000, PF 67000 + PFA 60000

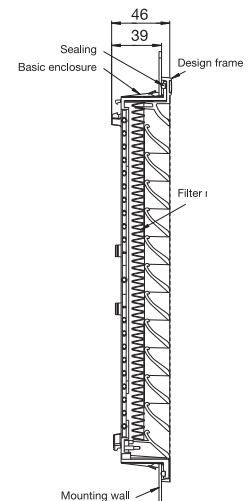
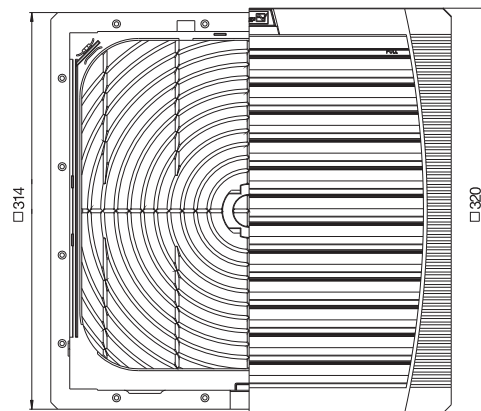
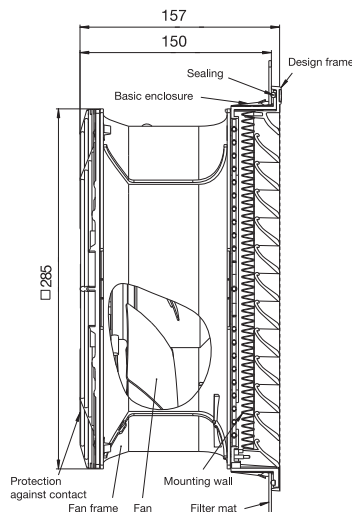


Mechanical data:

PF 65000, PF 66000,
PF 67000

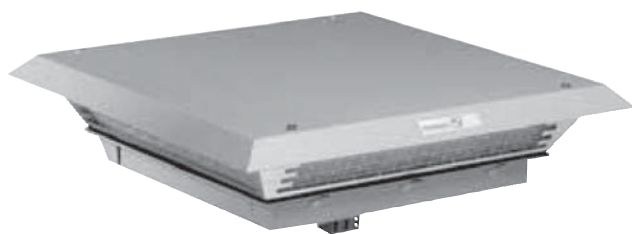
PF 65000, PF 66000,
PF 67000 + PFA 60000

PFA 60000



| Supplementary data | PF 65000 | PF 66000 | PF 67000 |
|---------------------------------|--------------------------------------------------------------------------------------------|----------|----------|
| Operating temperature | – 15 °C (– 5 °F) to / bis + 55 °C (+ 131 °F) | | |
| Storage temperature | – 20 °C (– 4 °F) to / bis + 70 °C (+ 158 °F) | | |
| Max. relative humidity | 90% | | |
| System of protection | NEMA Type 12, IP 55 (EN 60 529), when installed as specified | | |
| Basic Accessories | parts kit filter mat, user manual radiant heater, fan heater, thermostat, hygrostat | | |
| Approvals | UL Recognized | | |
| * Tolerance installation cutout | 177 + 1/-0 thickness of material to 2 mm 178 + 1/-0 thickness of material > 2 mm < 3 mm | | |

Filterfan PTF 60500, PTF 60700, PTF 61000 / Exhaust Filter PTFA 60000



Features

- Maintains a NEMA 12 seal against enclosure
- UL Recognized to UL 508a, category NITW2/8, UL File #E175229
- Patented "Click & Fit" design provides a hardware free installation!
- Metal Pagoda Cover for rugged environments, easily painted to match machine color
- Fan Motor is CSA Approved



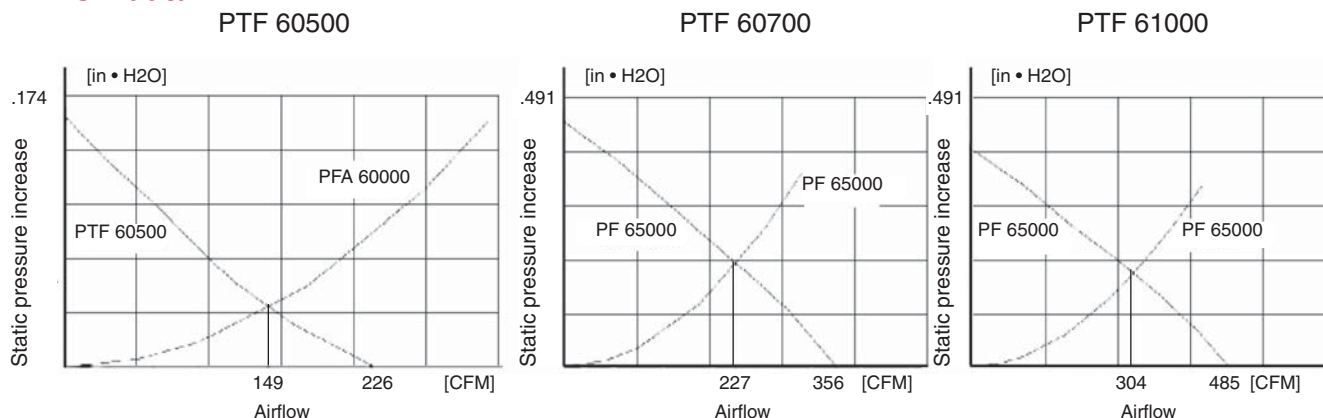
| Part Number | Voltage | Power | Mating Exhaust Filter | Ship Wt. lbs. |
|---------------|---------|-------|-----------------------|---------------|
| PTF60500LG | 115V | 24W | PFA60000LG | 14 |
| PTF60500LG230 | 230V | 24W | PFA60000LG | 14 |
| PTF60700LG | 115V | 90W | PFA60000LG | 14 |
| PTF60700LG230 | 230V | 80W | PFA60000LG | 14 |
| PTF61000LG | 115V | 170W | PFA60000LG | 15 |
| PTF61000LG230 | 230V | 150W | PFA60000LG | 15 |

| Airflow data | PTF 60500 | PTF 60700 | PTF 61000 | PTFA 60000 |
|------------------------------------------------------------------------------------------------------|-------------------|-------------------|-------------------|-------------------|
| Filter material | NEMA 12 Filtermat | NEMA 12 Filtermat | NEMA 12 Filtermat | NEMA 12 Filtermat |
| Unimpeded airflow | 226 CFM | 356 CFM | 485 CFM | - |
| Capacity free-flow | 113 W/K | 177 W/K | 242 W/K | - |
| Airflow in combination | 149 CFM | 227 CFM | 304 CFM | - |
| (Filterfan + Exhaust Filter) (PTF 60500 + PFA 60000) (PTF 60700 + PFA 60000) (PTF 61000 + PFA 60000) | | | | |
| Capacity in combination | 74 W/K | 113 W/K | 152 W/K | - |
| (Filterfan + Exhaust Filter) (PTF 60500 + PFA 60000) (PTF 60700 + PFA 60000) (PTF 61000 + PFA 60000) | | | | |
| Max. static pressure (Airflow = 0) | 71 Pa | 88 Pa | 158 Pa | - |
| Filtration efficiency | 81 % | 81 % | 81 % | - |
| Filter material grade | G 3 (DIN EN 779) | G 3 (DIN EN 779) | G 3 (DIN EN 779) | - |
| Duty cycle | 100% | 100% | 100% | - |

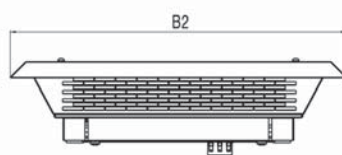
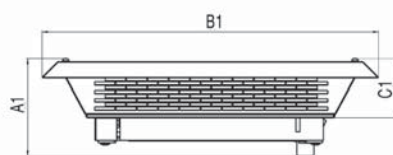
| Technical data | PTF 60500 | PTF 60700 | PTF 61000 | PTFA 60000 |
|----------------------------------------------------------------|-----------------------------------------------------------|----------------------|----------------------|------------|
| Outside dimensions in mm (height x width x installation depth) | 125 x 430 x 430 x 50 | 140 x 470 x 470 x 50 | 140 x 470 x 470 x 50 | - |
| Bearing type | ball bearings | ball bearings | ball bearings | - |
| Fitting position | horizontal | horizontal | horizontal | any |
| Construction | metal chassis cover powder coated, snapin plastic housing | | | |
| Weight | 5.5 kg | 5.8 kg | 6.0 kg | 3.1 kg |
| Safety protection | in accordance with DIN 31 001 | | | |
| Color | RAL 7035, Light Grey | | | |
| Connections | terminal strip | terminal strip | terminal strip | - |

Filterfan PTF 60500, PTF 60700, PTF 61000 / Exhaust Filter PTFA 60000

Airflow data:



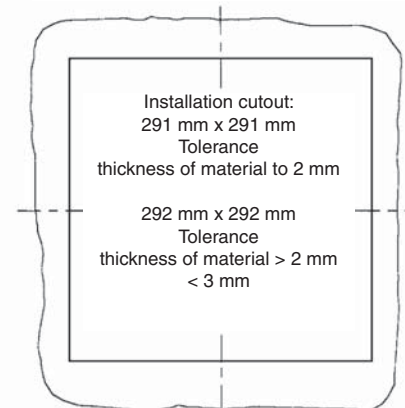
Mechanical data:



| | PTF 60500 | PTF 60700 | PTF 61000 | PTFA 60000 |
|-------|-----------|-----------|-----------|------------|
| A1 | 125 | 140 | 140 | 110* |
| B1/B2 | 430 | 470 | 470 | 430 |
| C1 | 75 | 90 | 90 | 75 |

| Airflow data: | PTFA 60000 |
|------------------------------------|------------|
| Filter material | P 300 |
| Filtration efficiency | 81% |
| Filter material grade (DIN EN 779) | G 3 |

Cutout



| Technical data: | PTFA 60000 |
|---------------------------------------------------------------------------|--------------------------------------------------------------------------------------------------------------------|
| Outside dimensions in mm (Height x Width x Depth x Installation depth) | 110 x 430 x 430 x 35 |
| Construction | metal chassis, cover powder-coated; snap-in body of sprayed thermoplastic (ABS-FR) self-extinguishing, UL 94 VO |
| Weight | 3.1 kg |
| Safety protection | in accordance with DIN 31 001 |
| Color | RAL 7035, RAL 7032, other colors on request |

| Supplementary data: | PTFA 60000 |
|-------------------------------|---------------------------------------------------------------------------|
| Operating temperature | -10 C (+14 F) to +55 C (+131 F) |
| Storage temperature | -20 C (-4 F) to +70 C (+158 F) |
| Max. relative humidity | 90% |
| System of protection | IP 33, IP 54 (EN 60 529), when installed as specified |
| Accessories | radiant heater, fan heater, thermostat, see Thermal Management |
| Tolerance installation cutout | 291 thickness of material to 2 mm, 292 thickness of material > 2 mm < 3mm |
| Approvals | pending |

Accessory Products

Exhaust Filters:



| Part Number | Filtration Efficiency % |
|-------------|-------------------------|
| PFA10000LG* | 88% |
| PFA20000LG | 91% |
| PFA30000LG | 91% |
| PFA40000LG | 91% |
| PFA60000LG | 91% |

Standard grill color: RAL 7035 Light Grey



Features

- Maintains a UL Tested NEMA Type 12 seal against enclosure
- UL Recognized to UL 508a, category NITW2/8, UL File #E175229
- Patented "Click & Fit" design provides a hardware free installation!
- Plastic made from strong, heat resistant (ABS-FR) UL 94 VO fire approved material

Replacement Filters:



| Part Number | Use with 4th Gen FF |
|-------------|---------------------|
| PFF10000* | PF/PFA 1XXXX |
| PFF20000 | PF/PFA 2XXXX |
| PFF30000 | PF/PFA 3XXXX |
| PFF40000 | PF/PFA 4XXXX |
| PFF60000 | PF/PFA 6XXXX |

* Standard synthetic fiber filter.

Features

- Special patent pending fluted filter design increases the time between maintenance by 3X.
- Allows for greater CFM in dirty environments
- Sold in Packs of 5.

Thermostats:



Features

- Mechanical bi-metallic thermostat
- Suitable for Filterfans or Heaters
- Available in Fahrenheit or Celsius



| Part Number | Description | Switching Capacity |
|---------------|--------------------|--------------------------|
| SKT011419NO | Normally Open, F | 15A AC 120V, 10A AC 250V |
| SKT011419NO-C | Normally Open, C | 15A AC 120V, 10A AC 250V |
| SKT011409NC | Normally Closed, F | 15A AC 120V, 10A AC 250V |
| SKT011409NC-C | Normally Closed, C | 15A AC 120V, 10A AC 250V |

Cooling Unit Selection Guide

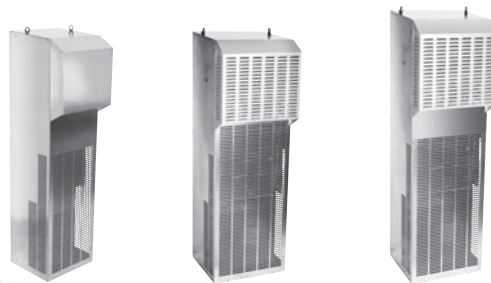


NEMA Type 12 Indoor - Side Mount:

| | DTS3341A230LG DTS3341A460LG | DTS3541A230LG DTS3541A460LG | DTS3641A230LG DTS3641A460LG |
|---------------------------|--------------------------------|--------------------------------|--------------------------------|
| Cooling Capacity (Btu/h*) | 12-14000 | 16-18000 | 20-24000 |
| External Airflow (CFM) | 991 | 1480 | 1612 |
| Internal Airflow (CFM) | 788 | 788 | 1612 |
| NEMA Type Rating | Type 12 | Type 12 | Type 12 |
| UL Listed or Recognized | Listed | Listed | Listed |
| Connection Type | Permanent | Permanent | Permanent |

Features

- Maintains a UL Tested NEMA Type 12 seal against enclosure
- UL Listed to UL 484, UL File #SA10300, CE approved
- Long internal airpath captures heat above components and provides cool air below!
- Powder coated steel cover for rugged environments, easily painted to match machine
- Uses Standard Control logic board
- Condensate Management built into design of unit



NEMA Type 3R/4 Outdoor:

| | DTS3361A230N3LG DTS3361A460N3LG | DTS3561A230N3LG DTS3561A460N3LG | DTS3661A230N3LG DTS3661A460N3LG |
|---------------------------|------------------------------------|------------------------------------|------------------------------------|
| Cooling Capacity (Btu/h*) | 12-14000 | 16-18000 | 22-24000 |
| External Airflow (CFM) | 991 | 1480 | 1612 |
| Internal Airflow (CFM) | 788 | 788 | 1612 |
| NEMA Type Rating | Type 3R/4 | Type 3R/4 | Type 3R/4 |
| UL Listed or Recognized | Listed | Listed | Listed |
| Connection Type | Permanent | Permanent | Permanent |

Features

- Maintains a UL Tested NEMA Type 3R/4 or 4/4X seal against enclosure
 - UL Listed to UL 484, UL File #SA10300, CE approved
 - Long internal airpath captures heat above components and provides cool air below!
 - Powder coated steel cover for rugged environments, easily painted to match machine
 - Uses Standard Control logic board and sump heater standard
 - Condensate Management built into design of unit
- Options: Low ambient package, Built-In enclosure heater

NEMA Type 4/4X Outdoor/Washdown:

| | DTS3381A230N4SS DTS3381A460N4SS | DTS3581A230N4SS DTS3581A460N4SS | DTS3681A230N4SS DTS3681A460N4SS |
|---------------------------|------------------------------------|------------------------------------|------------------------------------|
| Cooling Capacity (Btu/h*) | 12-14000 | 16-18000 | 20-24000 |
| External Airflow (CFM) | 991 | 1480 | 1612 |
| Internal Airflow (CFM) | 788 | 788 | 1612 |
| NEMA Type Rating | Type 4/4X | Type 4/4X | Type 4/4X |
| UL Listed or Recognized | Listed | Listed | Listed |
| Connection Type | Permanent | Permanent | Permanent |



HAMMOND
MANUFACTURING™