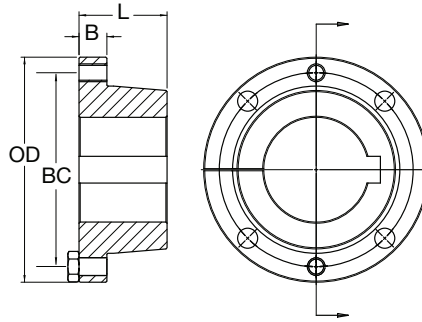


Conveyor Bushings



**QD Short Bushings
& Taper Bushings
also Available.
Please See
General Catalog,
Section B
For More Information.**

Martin's MXT & MXT-STL Bushings are available from stock to fit all popular pulley sizes. Martin stocks both MXT & MXT-STL Bushings in a wide range of bore sizes per hub. Both the MXT & MXT-STL Bushing offers a 2" per foot taper, which reduces end disc pre-stressing, as well as increasing clamping force.

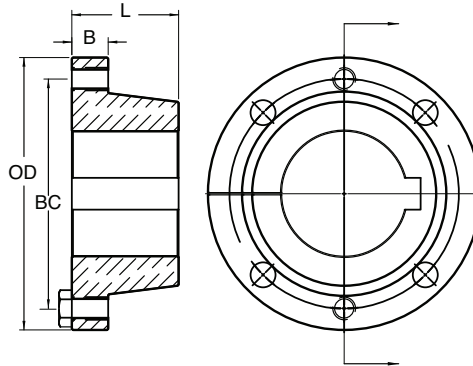
All bushings size 50 and larger feature full depth keys.

MXT™/ MXT-STL™ Bushing Dimensions

Part Number		Max. Bore (In.)	Dimensions				Cap Screws		Wt. Lbs. (Approx)	Standard Stock Bores		Wrench Torque (Ft./Lbs.)
Cast / Ductile	Steel		Length thru Bore (L)	Flange Width (B)	Flange O.D. (OD)	Bolt Circle (BC)	No.	Size		Stock Bore (Inches)	Keyway*	
MXT15	MXT-STL15	1-1/2	1-1/8	3/8	2-7/8	2-7/16	4	1/4 x 1	0.7	5/8, 3/4, 7/8 1, 1-1/8, 1-3/16, 1-1/4 1-7/16, 1-1/2	3/16 x 3/32 1/4 x 1/8 3/8 x 1/8*	8
MXT20	MXT-STL20	2	1-13/32	15/32	3-3/4	3-3/16	4	5/16 x 1-1/4	1.5	3/4 1, 1-3/16, 1-1/4 1-7/16, 1-1/2, 1-11/16 1-15/16, 2	3/16 x 3/32 1/4 x 1/8 3/8 x 3/16 1/2 x 3/16*	17
MXT25	MXT-STL25	2-1/2	1-7/8	5/8	4-7/16	3-3/4	4	3/8 x 1-3/4	2.6	1, 1-3/16, 1-1/4 1-7/16, 1-1/2, 1-11/16 1-15/16, 2, 2-3/16 2-7/16	1/4 x 1/8 3/8 x 3/16 1/2 x 1/4 5/8 x 1/8*	29
MXT30	MXT-STL30	3	2-1/16	11/16	5-5/16	4-9/16	4	7/16 x 1-1/2	4.2	1-7/16, 1-1/2 1-15/16, 2-3/16 2-7/16, 2-1/2, 2-11/16 2-15/16	3/8 x 3/16 1/2 x 1/4 5/8 x 5/16 3/4 x 3/16*	46
MXT35	MXT-STL35	3-1/2	2-15/32	25/32	6-5/16	5-7/16	4	1/2 x 1-3/4	7.4	1-15/16, 2-3/16 2-7/16, 2-1/2, 2-11/16 2-15/16 3, 3-7/16	1/2 x 1/4 5/8 x 5/16 3/4 x 3/8 7/8 x 5/16*	70
MXT40	MXT-STL40	4	2-13/16	7/8	7-1/8	6-1/8	4	9/16 x 2	10.5	2-3/16 2-7/16 2-15/16 3-7/16, 3-1/2 3-15/16	1/2 x 1/4 5/8 x 5/16 3/4 x 3/8 7/8 x 7/16 1 x 3/8*	100
MXT45	MXT-STL45	4-1/2	3-5/16	15/16	8	6-7/8	4	5/8 x 2-1/4	14.8	2-15/16 3-7/16 3-15/16 4-7/16 3-7/16	3/4 x 3/8 7/8 x 7/16 1 x 1/2 1 x 3/8* 7/8 x 7/16	140
MXT50	MXT-STL50	5	3-3/4	1	10-1/8	8-5/16	4	3/4 x 2-1/2	27.8	3-15/16, 4-7/16 4-15/16, 5	1 x 1/2 1-1/4 x 5/8	250
MXT60	MXT-STL60	6	4-1/8	1-1/8	11-15/16	9-7/8	4	7/8 x 2-1/2	42.8	4-15/16, 5-7/16, 5-1/2 5-15/16, 6	1-1/4 x 5/8 1-1/2 x 3/4	400
MXT70	MXT-STL70	7	4-11/16	1-5/16	13-15/16	11-9/16	4	1 x 3	66.3	6-1/4, 6-7/16, 6-1/2 6-15/16, 7	1-1/2 x 3/4 1-3/4 x 3/4	600
MXT80	MXT-STL80	8	5-1/8	1-3/8	15-5/8	12-7/8	4	1-1/8 x 3-1/2	85.7	7-1/4, 7-7/16, 7-1/2 7-15/16, 8	1-3/4 x 3/4 2 x 3/4	750
MXT100	MXT-STL100	10	6-3/16	1-9/16	17-15/16	15-9/16	6	1-1/8 x 3-1/2	146.0	8, 8-1/2, 9 9-7/16, 9-1/2, 10	2 x 3/4 2-1/2 x 7/8	750
MXT120	MXT-STL120	12	7-1/16	1-3/4	20-5/8	18-3/16	8	1-1/8 x 3-1/2	216.0	10-1/2, 11 11-1/2, 12	2-1/2 x 7/8 3 x 1	750

* Keystock provided for non-standard keyways.

**QD Short Bushings
& Taper Bushings
also Available.
Please See
General Catalog,
Section B
For More Information.**



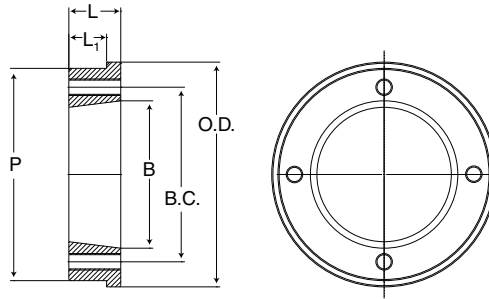
Martin's M-HE Bushings are available from stock to fit all popular pulley sizes. Martin stocks M-HE Bushings in a wide range of bore sizes per hub. The M-HE Bushing offers a 3" per foot taper, which reduces end disc pre-stressing.

M-HE™ Bushing Dimensions

Part Number	Dimensions					Cap Screws		Wt. Lbs. (Approx.)	Standard Stock Bores		Wrench Torque (Ft./Lbs.)
	Max. Bore (In.)	Length thru Bore (L)	Flange Width (B)	Flange O.D. (OD)	Bolt Circles (BC)	No. Bolts	Size		Stock Bore	Keyseat*	
M-HE25	2-1/2	2-1/4	3/4	4-5/8	3-15/16	4	3/8-16 x 1-1/2	3	1, 1-1/8, 1-3/16, 1-1/4	1/4 X 1/8	30
									1-5/16, 1-3/8	5/16 X 5/32	
									1-7/16, 1-1/2, 1-11/16, 1-3/4	3/8 X 3/16	
									1-13/16, 1-7/8, 1-15/16, 2, 2-1/8, 2-3/16, 2-1/4	1/2 X 1/4	
									2-5/16, 2-3/8, 2-7/16, 2-1/2	5/8 X 3/16	
M-HE30	3	2-3/4	7/8	5-5/8	4-11/16	4	1/2-13 x 1-3/4	6	1-3/8	5/16 X 5/32	60
									1-7/16, 1-1/2, 1-11/16, 1-3/4	3/8 X 3/16	
									1-15/16, 2, 2-3/16	1/2 X 1/4	
									2-7/16, 2-1/2, 2-9/16, 2-11/16, 2-3/4	5/8 X 5/16	
									2-13/16, 2-7/8, 2-15/16, 3	3/4 X 1/8	
M-HE35	3-1/2	3	7/8	6-5/8	5-9/16	4	9/16-12 x 2-1/2	8	1-3/16	1/4 X 1/2	90
									1-7/16, 1-1/2, 1-11/16, 1-3/4	3/8 X 3/16	
									1-15/16, 2, 2-3/16, 2-1/4	1/2 X 1/4	
									2-3/8, 2-7/16, 2-1/2, 2-11/16, 2-3/4	5/8 X 5/16	
									2-7/8, 2-15/16, 3, 3-3/16	3/4 X 3/8	
M-HE40	4	3-1/2	1	7-1/2	6-5/16	4	5/8-11 x 2-1/2	13	3-3/8, 3-7/16, 3-1/2	7/8 X 3/16	140
									1-15/16, 2-3/16	1/2 X 1/4	
									2-7/16, 2-1/2, 2-11/16	5/8 X 5/16	
									2-15/16, 3-3/16	3/4 X 3/8	
									3-7/16, 3-11/16	7/8 X 7/16	
M-HE45	4-1/2	4	1-1/4	8-3/4	7-5/16	4	5/8-11 x 2-1/2	22	3-7/8, 3-15/16, 4	1 X 1/4	140
									1-15/16	1/2 X 1/4	
									2-7/16	5/8 X 5/16	
									2-15/16	3/4 X 3/8	
									3-7/16, 3-1/2	7/8 X 7/16	
M-HE50	5	4-1/2	1-1/2	9-5/8	8	4	3/4-10 x 3	40	4-3/16, 4-7/16, 4-1/2	1 X 1/4	200
									2-15/16	3/4 X 3/8	
									3-7/16	7/8 X 7/16	
									3-15/16, 4-7/16	1 X 1/2	
									4-15/16, 5	1-1/4 X 1/4	
M-HE60	6	5-1/4	1-3/4	11-1/8	9-1/4	4	7/8-9 x 3-1/2	50	3-15/16, 4-1/4, 4-7/16	1 X 1/2	350
									4-15/16, 5-7/16, 5-1/2	1-1/4 X 5/8	
									5-15/16, 6	1-1/2 X 1/4	
									4-7/16	1 X 1/2	
									4-15/16, 5-7/16	1-1/4 x 5/8	
M-HE70	7	4.45	2	12-3/4	10-1/2	6	1-8 x 1/4	74	5-7/16, 6, 6-7/16, 6-1/2	1-1/2 x 3/4	350
									6-15/16, 7	1-3/4 x 1/4	
									5-15/16, 6-7/16	1-1/2 x 3/4	
									6-3/4, 6-15/16, 7, 7-3/16, 7-1/2, 7-7/16	1-3/4 x 3/4	
									7-3/4, 7-15/16, 8	2 x 3/4	
M-HE80	8	5.20	2-1/4	14-1/2	12-1/8	6	1-1/8-7 x 4-1/2	114			350

* Keystock provided for non-standard keyways.

Weld On Hubs



**QD & Taper Hubs
also Available.
Please See
General Catalog,
Section B
For More Information.**

Martin's weld on hubs are specifically designed for use on conveyor pulleys. Hubs are available from stock to fit all popular pulley sizes. *Martin's* weld on hubs are available in MXT and M-HE styles.

MXTH™ Weld On Hubs

Part Number	Dimensions - Inches						Tapped Holes		Wt. Lbs. (Approx.)
	OD	LTB (L)	Step OD (P)	Step LTB (L ₁)	Taper Fit (B)	B.C.	No.	Size	
MXTH-15	3.190	0.625	2.875	0.438	2.000	2.438	4	1/4 - 20	0.7
MXTH-20	4.065	0.812	3.813	0.562	2.688	3.188	4	5/16 - 18	1.5
MXTH-25	4.690	1.125	4.375	0.812	3.188	3.750	4	3/8 - 16	2.7
MXTH-30	5.940	1.250	5.750	0.875	3.875	4.562	4	7/16 - 14	4.1
MXTH-35	6.565	1.500	6.345	1.062	4.688	5.438	4	1/2 - 13	6.6
MXTH-40	7.563	1.750	7.250	1.250	5.313	6.125	4	9/16 - 12	10.7
MXTH-45	8.315	2.125	8.000	1.500	5.938	6.875	4	5/8 - 11	15.4
MXTH-50	9.940	2.500	9.563	1.750	7.250	8.312	4	3/4 - 10	24.9
MXTH-60	11.690	2.750	11.250	1.938	8.625	9.875	4	7/8 - 9	36.4
MXTH-70	13.628	3.125	13.188	2.188	10.000	11.562	4	1 - 8	57.7
MXTH-80	14.940	3.438	14.625	2.438	11.125	12.875	4	1-1/8 - 7	75.6
MXTH-100	17.940	4.125	17.500	3.000	13.688	15.562	6	1-1/8 - 7	122.0
MXTH-120	20.940	4.8125	20.500	3.50	16.188	18.1875	8	1-1/8 - 7	189

M-HEH™ Weld On Hubs

Part Number	Dimensions - Inches						Tapped Holes		Wt. Lbs. (Approx.)
	OD	LTB	Step OD	Step LTB	Taper Fit	B.C.	No.	Size	
M-HEH-25	4.700	1.140	4.499	0.822	3.312	3.938	4	3/8 - 16	2.6
M-HEH-30	6.950	1.265	6.624	0.885	3.907	4.688	4	1/2 - 13	8.4
M-HEH-35	6.910	1.515	6.627	1.010	4.717	5.563	4	9/16 - 12	7.9
M-HEH-40	8.420	1.765	8.002	1.260	5.445	6.313	4	5/8 - 11	14.6
M-HEH-45	9.000	2.140	7.999	1.510	6.124	7.313	6	5/8 - 11	19.0
M-HEH-50	10.000	2.515	9.499	1.790	6.685	8.000	6	3/4 - 10	27.8
M-HEH-60	11.906	2.765	11.249	2.010	7.808	9.250	6	7/8 - 9	43.7
M-HEH-70	13.642	3.140	13.187	2.198	9.994	11.562	6	1 - 8	57.7
M-HEH-80	15.265	3.640	14.749	2.635	11.119	12.875	6	1-1/8 - 7	81.4