

Wing Pulleys — Standard Duty

Martin

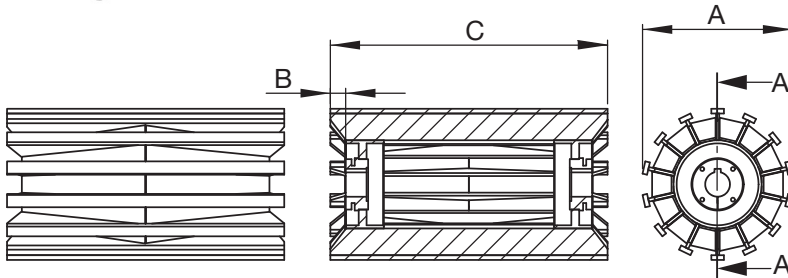
Standard Duty Wing Pulleys



Martin's Standard Duty Wing Pulleys are constructed from extremely heavy materials and are recognized in the industry as the most aggressive CEMA grade stock pulley on the shelf. All *Martin* wing pulleys utilize the unique 'end-pipe' design, which offers ultimate protection against wing folding and hub-weld fatigue. Our minimum 3/8" thick contact bar yields additional life in abrasive applications where our competitors thinner bar does not. Additionally, our 1/4" thick wing offers greater structural support in aggressive applications.

FEATURES:

- Available in 6" thru 60" Diameter
- Minimum 3/8" x 1-1/4" Contact Bars
- Minimum 1/4" Thick Wings
- Minimum 10 ga. Gussets
- Features Unique *Martin* 'End Pipe' Design
 - Better Protection Against Wing Folding
 - Better Protection Against Hub-Weld Fatigue
- Several Hub/Bushing Systems Available



SECTION A-A

Standard Duty Wing Pulleys

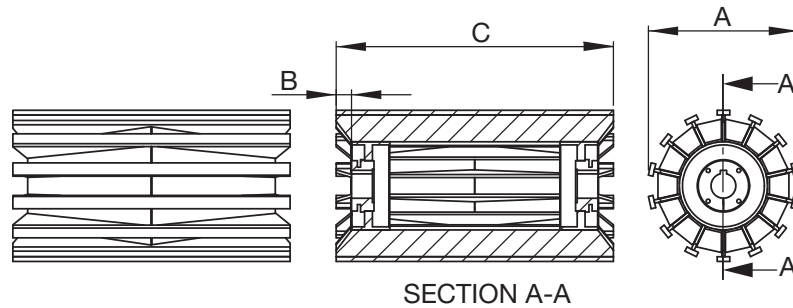
Diameter (A)	Part Number	Face (C)	Hub	Max Bore	Setback (B)*	Approx. Weight (lbs)
8	CSW08012X25	12	MXT25	2-1/2	3/4	36
8	CSW08014X25	14	MXT25	2-1/2	3/4	40
8	CSW08016X25	16	MXT25	2-1/2	3/4	46
8	CSW08018X25	18	MXT25	2-1/2	3/4	51
8	CSW08020X25	20	MXT25	2-1/2	3/4	56
8	CSW08022X25	22	MXT25	2-1/2	3/4	61
8	CSW08024X25	24	MXT25	2-1/2	3/4	66
8	CSW08026X25	26	MXT25	2-1/2	3/4	71
8	CSW08028X25	28	MXT25	2-1/2	3/4	75
8	CSW08030X25	30	MXT25	2-1/2	3/4	80
8	CSW08032X25	32	MXT25	2-1/2	3/4	85
8	CSW08038X25	38	MXT25	2-1/2	3/4	103
8	CSW08044X25	44	MXT25	2-1/2	3/4	118
8	CSW08051X25	51	MXT25	2-1/2	3/4	138
8	CSW08063X25	63	MXT25	2-1/2	3/4	171
8	CSW08063X30	63	MXT30	3	7/8	259
10	CSW10012X25	12	MXT25	2-1/2	3/4	40
10	CSW10012X30	12	MXT30	3	7/8	53
10	CSW10014X25	14	MXT25	2-1/2	3/4	47
10	CSW10014X30	14	MXT30	3	7/8	55
10	CSW10016X25	16	MXT25	2-1/2	3/4	54
10	CSW10016X30	16	MXT30	3	7/8	64
10	CSW10018X25	18	MXT25	2-1/2	3/4	60
10	CSW10018X30	18	MXT30	3	7/8	72
10	CSW10020X25	20	MXT25	2-1/2	3/4	67
10	CSW10020X30	20	MXT30	3	7/8	78
10	CSW10022X25	22	MXT25	2-1/2	3/4	73
10	CSW10022X30	22	MXT30	3	7/8	83
10	CSW10024X25	24	MXT25	2-1/2	3/4	79
10	CSW10024X30	24	MXT30	3	7/8	89
10	CSW10026X25	26	MXT25	2-1/2	3/4	86
10	CSW10026X30	26	MXT30	3	7/8	94
10	CSW10030X25	30	MXT25	2-1/2	3/4	98
10	CSW10030X30	30	MXT30	3	7/8	105
10	CSW10032X25	32	MXT25	2-1/2	3/4	104
10	CSW10032X30	32	MXT30	3	7/8	111

Standard Duty Wing Pulleys

Diameter (A)	Part Number	Face (C)	Hub	Max Bore	Setback (B)*	Approx. Weight (lbs)
10	CSW10036X25	36	MXT25	2-1/2	3/4	117
10	CSW10036X30	36	MXT30	3	7/8	122
10	CSW10038X25	38	MXT25	2-1/2	3/4	126
10	CSW10038X35	38	MXT35	3-1/2	7/8	129
10	CSW10044X25	44	MXT25	2-1/2	3/4	145
10	CSW10044X30	44	MXT30	3	7/8	150
10	CSW10051X25	51	MXT25	2-1/2	3/4	170
10	CSW10051X30	51	MXT30	3	7/8	176
10	CSW10051X35	51	MXT35	3-1/2	7/8	170
10	CSW10057X30	57	MXT30	3	7/8	193
10	CSW10057X35	57	MXT35	3-1/2	7/8	186
10	CSW10063X25	63	MXT25	2-1/2	3/4	211
10	CSW10063X30	63	MXT30	3	7/8	216
10	CSW10063X35	63	MXT35	3-1/2	7/8	209
12	CSW12012X25	12	MXT25	2-1/2	3/4	51
12	CSW12012X30	12	MXT30	3	7/8	58
12	CSW12012X35	12	MXT35	3-1/2	7/8	53
12	CSW12014X25	14	MXT25	2-1/2	3/4	60
12	CSW12014X30	14	MXT30	3	7/8	65
12	CSW12014X35	14	MXT35	3-1/2	7/8	57
12	CSW12016X25	16	MXT25	2-1/2	3/4	68
12	CSW12016X30	16	MXT30	3	7/8	78
12	CSW12016X35	16	MXT35	3-1/2	7/8	74
12	CSW12018X25	18	MXT25	2-1/2	3/4	76
12	CSW12018X30	18	MXT30	3	7/8	86
12	CSW12018X35	18	MXT35	3-1/2	7/8	81
12	CSW12020X25	20	MXT25	2-1/2	3/4	84
12	CSW12020X30	20	MXT30	3	7/8	93
12	CSW12020X35	20	MXT35	3-1/2	7/8	89
12	CSW12022X25	22	MXT25	2-1/2	3/4	93
12	CSW12022X30	22	MXT30	3	7/8	100
12	CSW12022X35	22	MXT35	3-1/2	7/8	96
12	CSW12024X25	24	MXT25	2-1/2	3/4	101
12	CSW12024X30	24	MXT30	3	7/8	108
12	CSW12024X35	24	MXT35	3-1/2	7/8	103
12	CSW12026X25	26	MXT25	2-1/2	3/4	110

* General position for bushing face - for position per application consult *Martin*.

BOLD TYPE INDICATES PRODUCT CARRIED IN STOCK. Other sizes are available for quick delivery from nearest *Martin* facility.



Standard Duty Wing Pulleys

Diameter (A)	Part Number	Face (C)	Hub	Max Bore	Setback (B)*	Approx. Weight (lbs)
12	CSW12026X30	26	MXT30	3	7/8	115
12	CSW12026X35	26	MXT35	3-1/2	7/8	111
12	CSW12028X25	28	MXT25	2-1/2	3/4	118
12	CSW12030X25	30	MXT25	2-1/2	3/4	126
12	CSW12030X30	30	MXT30	3	7/8	130
12	CSW12030X35	30	MXT35	3-1/2	7/8	125
12	CSW12032X25	32	MXT25	2-1/2	3/4	135
12	CSW12032X30	32	MXT30	3	7/8	137
12	CSW12032X35	32	MXT35	3-1/2	7/8	133
12	CSW12036X25	36	MXT25	2-1/2	3/4	152
12	CSW12036X30	36	MXT30	3	7/8	152
12	CSW12036X35	36	MXT35	3-1/2	7/8	147
12	CSW12038X25	38	MXT25	2-1/2	3/4	160
12	CSW12038X30	38	MXT30	3	7/8	159
12	CSW12038X35	38	MXT35	3-1/2	7/8	155
12	CSW12038X40	38	MXT40	4	1	161
12	CSW12040X25	40	MXT25	2-1/2	3/4	168
12	CSW12040X30	40	MXT30	3	7/8	166
12	CSW12040X35	40	MXT35	3-1/2	7/8	162
12	CSW12044X25	44	MXT25	2-1/2	3/4	185
12	CSW12044X30	44	MXT30	3	7/8	181
12	CSW12044X35	44	MXT35	3-1/2	7/8	177
12	CSW12044X40	44	MXT40	4	1	179
12	CSW12051X25	51	MXT25	2-1/2	3/4	218
12	CSW12051X30	51	MXT30	3	7/8	123
12	CSW12051X35	51	MXT35	3-1/2	7/8	209
12	CSW12057X35	57	MXT35	3-1/2	7/8	231
12	CSW12063X30	63	MXT30	3	7/8	264
14	CSW14012X25	12	MXT25	2-1/2	3/4	63
14	CSW14012X30	12	MXT30	3	7/8	68
14	CSW14012X35	12	MXT35	3-1/2	7/8	62
14	CSW14012X40	12	MXT40	4	1	74
14	CSW14014X25	14	MXT25	2-1/2	3/4	69
14	CSW14014X30	14	MXT30	3	7/8	80
14	CSW14014X35	14	MXT35	3-1/2	7/8	74
14	CSW14014X40	14	MXT40	4	1	87
14	CSW14016X25	16	MXT25	2-1/2	3/4	83
14	CSW14016X30	16	MXT30	3	7/8	93
14	CSW14016X35	16	MXT35	3-1/2	7/8	87
14	CSW14016X40	16	MXT40	4	1	99
14	CSW14018X25	18	MXT25	2-1/2	3/4	94
14	CSW14018X30	18	MXT30	3	7/8	102
14	CSW14018X35	18	MXT35	3-1/2	7/8	97
14	CSW14018X40	18	MXT40	4	1	112
14	CSW14020X25	20	MXT25	2-1/2	3/4	105
14	CSW14020X30	20	MXT30	3	7/8	112
14	CSW14020X35	20	MXT35	3-1/2	7/8	106
14	CSW14020X40	20	MXT40	4	1	125
14	CSW14022X25	22	MXT25	2-1/2	3/4	115
14	CSW14022X30	22	MXT30	3	7/8	121
14	CSW14022X35	22	MXT35	3-1/2	7/8	116

Standard Duty Wing Pulleys

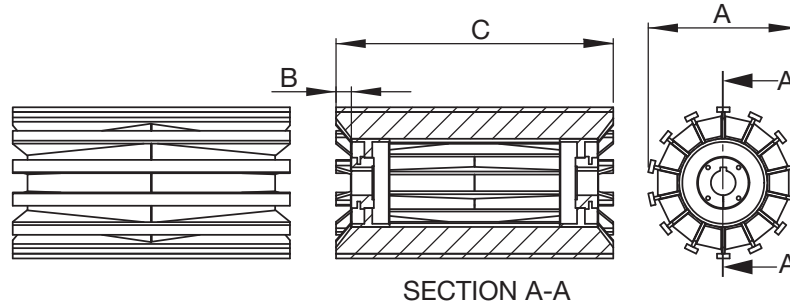
Diameter (A)	Part Number	Face (C)	Hub	Max Bore	Setback (B)*	Approx. Weight (lbs)
14	CSW14022X40	22	MXT40	4	1	128
14	CSW14024X25	24	MXT25	2-1/2	3/4	126
14	CSW14024X30	24	MXT30	3	7/8	131
14	CSW14024X35	24	MXT35	3-1/2	7/8	125
14	CSW14024X40	24	MXT40	4	1	136
14	CSW14026X25	26	MXT25	2-1/2	3/4	137
14	CSW14026X30	26	MXT30	3	7/8	140
14	CSW14026X35	26	MXT35	3-1/2	7/8	135
14	CSW14026X40	26	MXT40	4	1	145
14	CSW14030X25	30	MXT25	2-1/2	3/4	158
14	CSW14030X30	30	MXT30	3	7/8	159
14	CSW14030X35	30	MXT35	3-1/2	7/8	154
14	CSW14030X40	30	MXT40	4	1	161
14	CSW14032X25	32	MXT25	2-1/2	3/4	169
14	CSW14032X30	32	MXT30	3	7/8	169
14	CSW14032X35	32	MXT35	3-1/2	7/8	163
14	CSW14032X40	32	MXT40	4	1	170
14	CSW14034X25	34	MXT25	2-1/2	3/4	180
14	CSW14034X30	34	MXT30	3	7/8	178
14	CSW14036X25	36	MXT25	2-1/2	3/4	191
14	CSW14036X30	36	MXT30	3	7/8	188
14	CSW14036X35	36	MXT35	3-1/2	7/8	182
14	CSW14036X40	36	MXT40	4	1	186
14	CSW14038X25	38	MXT25	2-1/2	3/4	202
14	CSW14038X30	38	MXT30	3	7/8	198
14	CSW14038X40	38	MXT40	4	1	195
14	CSW14038X45	38	MXT45	4-1/2	1	192
14	CSW14038X50	38	MXT50	5	1	220
14	CSW14040X25	40	MXT25	2-1/2	3/4	212
14	CSW14040X30	40	MXT30	3	7/8	207
14	CSW14040X35	40	MXT35	3-1/2	7/8	201
14	CSW14040X40	40	MXT40	4	1	203
14	CSW14044X25	44	MXT25	2-1/2	3/4	234
14	CSW14044X30	44	MXT30	3	7/8	226
14	CSW14044X35	44	MXT35	3-1/2	7/8	221
14	CSW14044X40	44	MXT40	4	1	220
14	CSW14046X25	46	MXT25	2-1/2	3/4	245
14	CSW14046X30	46	MXT30	3	7/8	236
14	CSW14046X35	46	MXT35	3-1/2	7/8	230
14	CSW14046X40	46	MXT40	4	1	228
14	CSW14051X25	51	MXT25	2-1/2	3/4	275
14	CSW14051X30	51	MXT30	3	7/8	267
14	CSW14051X35	51	MXT35	3-1/2	7/8	261
14	CSW14051X40	51	MXT40	4	1	261
14	CSW14051X45	51	MXT45	4-1/2	1	258
14	CSW14054X30	54	MXT30	3	7/8	281
14	CSW14057X30	57	MXT30	3	7/8	295
14	CSW14057X35	57	MXT35	3-1/2	7/8	290
14	CSW14057X40	57	MXT40	4	1	286
14	CSW14063X25	63	MXT25	2-1/2	3/4	343

* General position for bushing face - for position per application consult Martin.

BOLD TYPE INDICATES PRODUCT CARRIED IN STOCK. Other sizes are available for quick delivery from nearest Martin facility.

Wing Pulleys — Standard Duty

Martin



Standard Duty Wing Pulley

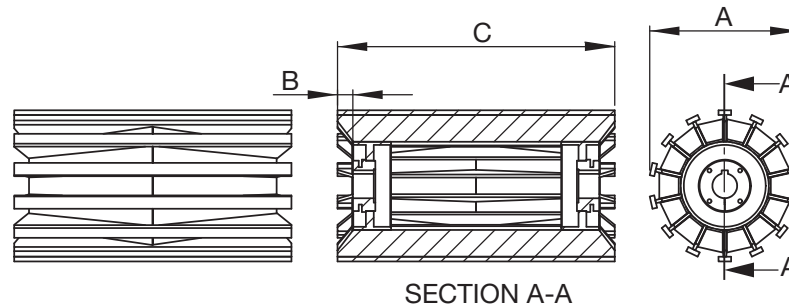
Diameter (A)	Part Number	Face (C)	Hub	Max Bore	Setback (B)*	Approx. Weight (lbs)
14	CSW14063X30	63	MXT30	3	7/8	331
14	CSW14063X35	63	MXT35	3-1/2	7/8	325
14	CSW14063X40	63	MXT40	4	1	323
16	CSW16012X25	12	MXT25	2-1/2	3/4	71
16	CSW16012X30	12	MXT30	3	7/8	76
16	CSW16012X35	12	MXT35	3-1/2	7/8	69
16	CSW16012X40	12	MXT40	4	1	80
16	CSW16014X25	14	MXT25	2-1/2	3/4	79
16	CSW16014X30	14	MXT30	3	7/8	90
16	CSW16014X35	14	MXT35	3-1/2	7/8	83
16	CSW16014X40	14	MXT40	4	1	94
16	CSW16016X25	16	MXT25	2-1/2	3/4	93
16	CSW16016X30	16	MXT30	3	7/8	103
16	CSW16016X35	16	MXT35	3-1/2	7/8	96
16	CSW16016X40	16	MXT40	4	1	108
16	CSW16018X25	18	MXT25	2-1/2	3/4	107
16	CSW16018X30	18	MXT30	3	7/8	114
16	CSW16018X35	18	MXT35	3-1/2	7/8	108
16	CSW16018X40	18	MXT40	4	1	122
16	CSW16020X25	20	MXT25	2-1/2	3/4	119
16	CSW16020X30	20	MXT30	3	7/8	125
16	CSW16020X35	20	MXT35	3-1/2	7/8	119
16	CSW16020X40	20	MXT40	4	1	137
16	CSW16022X25	22	MXT25	2-1/2	3/4	131
16	CSW16022X30	22	MXT30	3	7/8	136
16	CSW16022X35	22	MXT35	3-1/2	7/8	130
16	CSW16022X40	22	MXT40	4	1	141
16	CSW16024X25	24	MXT25	2-1/2	3/4	143
16	CSW16024X30	24	MXT30	3	7/8	147
16	CSW16024X35	24	MXT35	3-1/2	7/8	141
16	CSW16024X40	24	MXT40	4	1	151
16	CSW16026X25	26	MXT25	2-1/2	3/4	156
16	CSW16026X30	26	MXT30	3	7/8	158
16	CSW16026X35	26	MXT35	3-1/2	7/8	152
16	CSW16026X40	26	MXT40	4	1	161
16	CSW16028X25	28	MXT25	2-1/2	3/4	168
16	CSW16028X30	28	MXT30	3	7/8	170
16	CSW16028X35	28	MXT35	3-1/2	7/8	163
16	CSW16030X25	30	MXT25	2-1/2	3/4	180
16	CSW16030X30	30	MXT30	3	7/8	181
16	CSW16030X35	30	MXT35	3-1/2	7/8	174
16	CSW16030X40	30	MXT40	4	1	181
16	CSW16032X25	32	MXT25	2-1/2	3/4	193
16	CSW16032X30	32	MXT30	3	7/8	192
16	CSW16032X35	32	MXT35	3-1/2	7/8	185
16	CSW16032X40	32	MXT40	4	1	191
16	CSW16036X25	36	MXT25	2-1/2	3/4	218
16	CSW16036X30	36	MXT30	3	7/8	214
16	CSW16036X35	36	MXT35	3-1/2	7/8	208
16	CSW16036X40	36	MXT40	4	1	211
16	CSW16038X25	38	MXT25	2-1/2	3/4	230

Standard Duty Wing Pulley

Diameter (A)	Part Number	Face (C)	Hub	Max Bore	Setback (B)*	Approx. Weight (lbs)
16	CSW16038X30	38	MXT30	3	7/8	226
16	CSW16038X35	38	MXT35	3-1/2	7/8	219
16	CSW16038X45	38	MXT45	4-1/2	1	217
16	CSW16040X25	40	MXT25	2-1/2	3/4	242
16	CSW16040X30	40	MXT30	3	7/8	237
16	CSW16040X35	40	MXT35	3-1/2	7/8	230
16	CSW16040X40	40	MXT40	4	1	231
16	CSW16040X45	40	MXT45	4-1/2	1	227
16	CSW16044X25	44	MXT25	2-1/2	3/4	267
16	CSW16044X30	44	MXT30	3	7/8	259
16	CSW16044X35	44	MXT35	3-1/2	7/8	252
16	CSW16044X40	44	MXT40	4	1	251
16	CSW16044X45	44	MXT45	4-1/2	1	247
16	CSW16046X25	46	MXT25	2-1/2	3/4	280
16	CSW16046X30	46	MXT30	3	7/8	270
16	CSW16046X35	46	MXT35	3-1/2	7/8	264
16	CSW16046X40	46	MXT40	4	1	261
16	CSW16051X25	51	MXT25	2-1/2	3/4	314
16	CSW16051X30	51	MXT30	3	7/8	305
16	CSW16051X35	51	MXT35	3-1/2	7/8	298
16	CSW16051X40	51	MXT40	4	1	297
16	CSW16051X45	51	MXT45	4-1/2	1	294
16	CSW16057X40	57	MXT40	4	1	328
16	CSW16057X45	57	MXT45	4-1/2	1	324
16	CSW16063X25	63	MXT25	2-1/2	3/4	392
16	CSW16063X30	63	MXT30	3	7/8	379
16	CSW16063X35	63	MXT35	3-1/2	7/8	372
16	CSW16063X45	63	MXT45	4-1/2	1	365
16	CSW16063X50	63	MXT50	5	1	410
16	CSW16076X35	76	MXT35	3-1/2	7/8	452
18	CSW18012X25	12	MXT25	2-1/2	3/4	141
18	CSW18012X30	12	MXT30	3	7/8	113
18	CSW18012X35	12	MXT35	3-1/2	7/8	103
18	CSW18012X40	12	MXT40	4	1	112
18	CSW18012X45	12	MXT45	4-1/2	1	105
18	CSW18014X25	14	MXT25	2-1/2	3/4	110
18	CSW18014X30	14	MXT30	3	7/8	134
18	CSW18014X35	14	MXT35	3-1/2	7/8	123
18	CSW18014X40	14	MXT40	4	1	132
18	CSW18014X45	14	MXT45	4-1/2	1	125
18	CSW18016X25	16	MXT25	2-1/2	3/4	134
18	CSW18016X30	16	MXT30	3	7/8	152
18	CSW18016X35	16	MXT35	3-1/2	7/8	144
18	CSW18016X40	16	MXT40	4	1	153
18	CSW18016X45	16	MXT45	4-1/2	1	145
18	CSW18018X25	18	MXT25	2-1/2	3/4	158
18	CSW18018X30	18	MXT30	3	7/8	170
18	CSW18018X35	18	MXT35	3-1/2	7/8	161
18	CSW18018X40	18	MXT40	4	1	173
18	CSW18018X45	18	MXT45	4-1/2	1	166

* General position for bushing face - for position per application consult *Martin*.

BOLD TYPE INDICATES PRODUCT CARRIED IN STOCK. Other sizes are available for quick delivery from nearest *Martin* facility.



Standard Duty Wing Pulleys

Diameter (A)	Part Number	Face (C)	Hub	Max Bore	Setback (B)*	Approx. Weight (lbs)
18	CSW18020X25	20	MXT25	2-1/2	3/4	182
18	CSW18020X30	20	MXT30	3	7/8	187
18	CSW18020X35	20	MXT35	3-1/2	7/8	179
18	CSW18020X40	20	MXT40	4	1	194
18	CSW18020X45	20	MXT45	4-1/2	1	187
18	CSW18022X25	22	MXT25	2-1/2	3/4	206
18	CSW18022X30	22	MXT30	3	7/8	205
18	CSW18022X35	22	MXT35	3-1/2	7/8	197
18	CSW18022X40	22	MXT40	4	1	205
18	CSW18022X45	22	MXT45	4-1/2	1	200
18	CSW18024X25	24	MXT25	2-1/2	3/4	232
18	CSW18024X30	24	MXT30	3	7/8	223
18	CSW18024X35	24	MXT35	3-1/2	7/8	215
18	CSW18024X40	24	MXT40	4	1	221
18	CSW18024X45	24	MXT45	4-1/2	1	216
18	CSW18026X25	26	MXT25	2-1/2	3/4	247
18	CSW18026X30	26	MXT30	3	7/8	241
18	CSW18026X35	26	MXT35	3-1/2	7/8	232
18	CSW18026X40	26	MXT40	4	1	238
18	CSW18026X45	26	MXT45	4-1/2	1	233
18	CSW18028X30	28	MXT30	3	7/8	259
18	CSW18028X35	28	MXT35	3-1/2	7/8	250
18	CSW18030X25	30	MXT25	2-1/2	3/4	277
18	CSW18030X30	30	MXT30	3	7/8	277
18	CSW18030X35	30	MXT35	3-1/2	7/8	268
18	CSW18030X40	30	MXT40	4	1	271
18	CSW18030X45	30	MXT45	4-1/2	1	266
18	CSW18032X25	32	MXT25	2-1/2	3/4	292
18	CSW18032X30	32	MXT30	3	7/8	295
18	CSW18032X35	32	MXT35	3-1/2	7/8	286
18	CSW18032X40	32	MXT40	4	1	287
18	CSW18032X45	32	MXT45	4-1/2	1	317
18	CSW18036X25	36	MXT25	2-1/2	3/4	323
18	CSW18036X30	36	MXT30	3	7/8	331
18	CSW18036X35	36	MXT35	3-1/2	7/8	322
18	CSW18036X40	36	MXT40	4	1	320
18	CSW18036X45	36	MXT45	4-1/2	1	315
18	CSW18038X25	38	MXT25	2-1/2	3/4	338
18	CSW18038X30	38	MXT30	3	7/8	349
18	CSW18038X35	38	MXT35	3-1/2	7/8	340
18	CSW18038X40	38	MXT40	4	1	337
18	CSW18038X45	38	MXT45	4-1/2	1	332
18	CSW18038X50	38	MXT50	5	1	353
18	CSW18040X25	40	MXT25	2-1/2	3/4	353
18	CSW18040X30	40	MXT30	3	7/8	367
18	CSW18040X35	40	MXT35	3-1/2	7/8	358
18	CSW18040X40	40	MXT40	4	1	353
18	CSW18040X45	40	MXT45	4-1/2	1	348
18	CSW18044X25	44	MXT25	2-1/2	3/4	384
18	CSW18044X30	44	MXT30	3	7/8	403
18	CSW18044X35	44	MXT35	3-1/2	7/8	394

Standard Duty Wing Pulleys

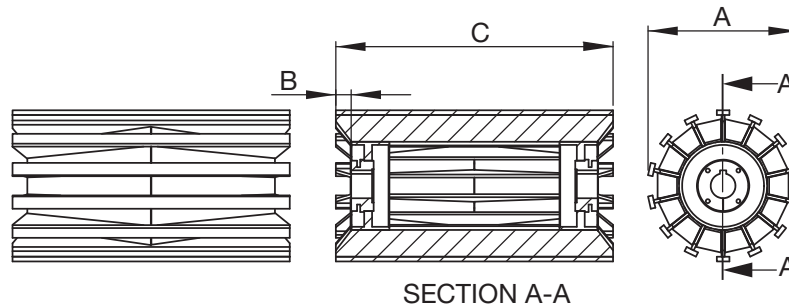
Diameter (A)	Part Number	Face (C)	Hub	Max Bore	Setback (B)*	Approx. Weight (lbs)
18	CSW18044X40	44	MXT40	4	1	386
18	CSW18044X45	44	MXT45	4-1/2	1	381
18	CSW18044X50	44	MXT50	5	1	398
18	CSW18046X25	46	MXT25	2-1/2	3/4	399
18	CSW18046X30	46	MXT30	3	7/8	421
18	CSW18046X35	46	MXT35	3-1/2	7/8	412
18	CSW18046X40	46	MXT40	4	1	403
18	CSW18046X45	46	MXT45	4-1/2	1	398
18	CSW18051X25	51	MXT25	2-1/2	3/4	464
18	CSW18051X30	51	MXT30	3	7/8	473
18	CSW18051X35	51	MXT35	3-1/2	7/8	464
18	CSW18051X40	51	MXT40	4	1	456
18	CSW18051X45	51	MXT45	4-1/2	1	451
18	CSW18051X50	51	MXT50	5	1	479
18	CSW18057X30	57	MXT30	3	7/8	527
18	CSW18057X45	57	MXT45	4-1/2	1	500
18	CSW18063X45	63	MXT45	4-1/2	1	562
18	CSW18063X50	63	MXT50	5	1	597
18	CSW18063X60	63	MXT60	6	1-1/8	644
18	CSW18076X35	76	MXT35	3-1/2	7/8	703
18	CSW18087X40	87	MXT40	4	1	777
20	CSW20012X25	12	MXT25	2-1/2	3/4	112
20	CSW20012X30	12	MXT30	3	7/8	148
20	CSW20012X35	12	MXT35	3-1/2	7/8	139
20	CSW20012X40	12	MXT40	4	1	122
20	CSW20012X45	12	MXT45	4-1/2	1	112
20	CSW20014X25	14	MXT25	2-1/2	3/4	131
20	CSW20014X30	14	MXT30	3	7/8	174
20	CSW20014X35	14	MXT35	3-1/2	7/8	165
20	CSW20014X40	14	MXT40	4	1	144
20	CSW20014X45	14	MXT45	4-1/2	1	133
20	CSW20016X25	16	MXT25	2-1/2	3/4	188
20	CSW20016X30	16	MXT30	3	7/8	190
20	CSW20016X35	16	MXT35	3-1/2	7/8	162
20	CSW20016X40	16	MXT40	4	1	160
20	CSW20016X45	16	MXT45	4-1/2	1	153
20	CSW20018X25	18	MXT25	2-1/2	3/4	204
20	CSW20018X30	18	MXT30	3	7/8	215
20	CSW20018X35	18	MXT35	3-1/2	7/8	204
20	CSW20018X40	18	MXT40	4	1	188
20	CSW20018X45	18	MXT45	4-1/2	1	178
20	CSW20020X25	20	MXT25	2-1/2	3/4	199
20	CSW20020X30	20	MXT30	3	7/8	232
20	CSW20020X35	20	MXT35	3-1/2	7/8	219
20	CSW20020X40	20	MXT40	4	1	203
20	CSW20020X45	20	MXT45	4-1/2	1	200
20	CSW20022X25	22	MXT25	2-1/2	3/4	225
20	CSW20022X30	22	MXT30	3	7/8	249
20	CSW20022X35	22	MXT35	3-1/2	7/8	235
20	CSW20022X40	22	MXT40	4	1	221

* General position for bushing face - for position per application consult *Martin*.

BOLD TYPE INDICATES PRODUCT CARRIED IN STOCK. Other sizes are available for quick delivery from nearest *Martin* facility.

Wing Pulleys — Standard Duty

Martin



SECTION A-A

Standard Duty Wing Pulleys

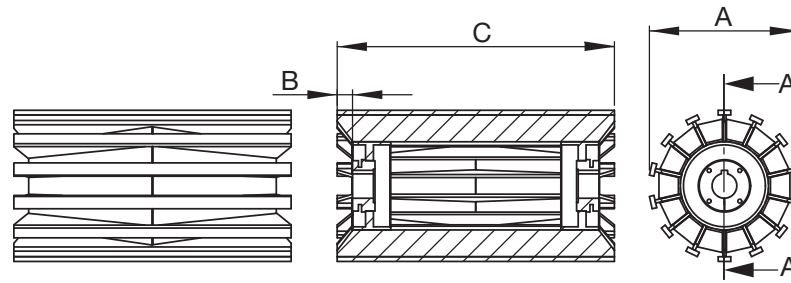
Diameter (A)	Part Number	Face (C)	Hub	Max Bore	Setback (B)*	Approx. Weight (lbs)
20	CSW20022X45	22	MXT45	4-1/2	1	215
20	CSW20024X25	24	MXT25	2-1/2	3/4	253
20	CSW20024X30	24	MXT30	3	7/8	266
20	CSW20024X35	24	MXT35	3-1/2	7/8	250
20	CSW20024X40	24	MXT40	4	1	239
20	CSW20024X45	24	MXT45	4-1/2	1	233
20	CSW20026X25	26	MXT25	2-1/2	3/4	270
20	CSW20026X30	26	MXT30	3	7/8	283
20	CSW20026X35	26	MXT35	3-1/2	7/8	266
20	CSW20026X40	26	MXT40	4	1	257
20	CSW20026X45	26	MXT45	4-1/2	1	251
20	CSW20028X30	28	MXT30	3	7/8	300
20	CSW20028X35	28	MXT35	3-1/2	7/8	282
20	CSW20030X25	30	MXT25	2-1/2	3/4	304
20	CSW20030X30	30	MXT30	3	7/8	317
20	CSW20030X35	30	MXT35	3-1/2	7/8	297
20	CSW20030X40	30	MXT40	4	1	294
20	CSW20030X45	30	MXT45	4-1/2	1	288
20	CSW20032X25	32	MXT25	2-1/2	3/4	321
20	CSW20032X30	32	MXT30	3	7/8	334
20	CSW20032X35	32	MXT35	3-1/2	7/8	313
20	CSW20032X40	32	MXT40	4	1	312
20	CSW20032X45	32	MXT45	4-1/2	1	306
20	CSW20036X25	36	MXT25	2-1/2	3/4	356
20	CSW20036X30	36	MXT30	3	7/8	368
20	CSW20036X35	36	MXT35	3-1/2	7/8	344
20	CSW20036X40	36	MXT40	4	1	349
20	CSW20036X45	36	MXT45	4-1/2	1	343
20	CSW20038X25	38	MXT25	2-1/2	3/4	373
20	CSW20038X30	38	MXT30	3	7/8	385
20	CSW20038X35	38	MXT35	3-1/2	7/8	360
20	CSW20038X40	38	MXT40	4	1	368
20	CSW20038X45	38	MXT45	4-1/2	1	361
20	CSW20038X50	38	MXT50	5	1	382
20	CSW20040X25	40	MXT25	2-1/2	3/4	390
20	CSW20040X30	40	MXT30	3	7/8	402
20	CSW20040X35	40	MXT35	3-1/2	7/8	376
20	CSW20040X40	40	MXT40	4	1	386
20	CSW20040X45	40	MXT45	4-1/2	1	380
20	CSW20044X25	44	MXT25	2-1/2	3/4	424
20	CSW20044X30	44	MXT30	3	7/8	436
20	CSW20044X35	44	MXT35	3-1/2	7/8	407
20	CSW20044X40	44	MXT40	4	1	423
20	CSW20044X45	44	MXT45	4-1/2	1	417
20	CSW20044X50	44	MXT50	5	1	432
20	CSW20044X60	44	MXT60	6	1-1/8	460
20	CSW20046X25	46	MXT25	2-1/2	3/4	441
20	CSW20046X30	46	MXT30	3	7/8	454
20	CSW20046X35	46	MXT35	3-1/2	7/8	423
20	CSW20046X40	46	MXT40	4	1	441
20	CSW20046X45	46	MXT45	4-1/2	1	435

Standard Duty Wing Pulleys

Diameter (A)	Part Number	Face (C)	Hub	Max Bore	Setback (B)*	Approx. Weight (lbs)
20	CSW20051X25	51	MXT25	2-1/2	3/4	511
20	CSW20051X30	51	MXT30	3	7/8	524
20	CSW20051X35	51	MXT35	3-1/2	7/8	495
20	CSW20051X40	51	MXT40	4	1	499
20	CSW20051X45	51	MXT45	4-1/2	1	493
20	CSW20051X50	51	MXT50	5	1	520
20	CSW20051X60	51	MXT60	6	1-1/8	559
20	CSW20054X25	54	MXT25	2-1/2	3/4	537
20	CSW20054X35	54	MXT35	3-1/2	7/8	518
20	CSW20054X45	54	MXT45	4-1/2	1	521
20	CSW20057X25	57	MXT25	2-1/2	3/4	563
20	CSW20057X30	57	MXT30	3	7/8	575
20	CSW20057X35	57	MXT35	3-1/2	7/8	542
20	CSW20057X40	57	MXT40	4	1	555
20	CSW20057X45	57	MXT45	4-1/2	1	548
20	CSW20057X50	57	MXT50	5	1	571
20	CSW20060X25	60	MXT25	2-1/2	3/4	588
20	CSW20060X30	60	MXT30	3	7/8	601
20	CSW20060X35	60	MXT35	3-1/2	7/8	565
20	CSW20060X40	60	MXT40	4	1	582
20	CSW20060X45	60	MXT45	4-1/2	1	576
20	CSW20063X25	63	MXT25	2-1/2	3/4	641
20	CSW20063X30	63	MXT30	3	7/8	654
20	CSW20063X35	63	MXT35	3-1/2	7/8	622
20	CSW20063X40	63	MXT40	4	1	622
20	CSW20063X45	63	MXT45	4-1/2	1	615
20	CSW20063X50	63	MXT50	5	1	650
20	CSW20066X25	66	MXT25	2-1/2	3/4	667
20	CSW20066X30	66	MXT30	3	7/8	679
20	CSW20066X35	66	MXT35	3-1/2	7/8	645
20	CSW20066X40	66	MXT40	4	1	649
20	CSW20066X45	66	MXT45	4-1/2	1	643
24	CSW24012X25	12	MXT25	2-1/2	3/4	192
24	CSW24012X30	12	MXT30	3	7/8	185
24	CSW24012X35	12	MXT35	3-1/2	7/8	172
24	CSW24012X40	12	MXT40	4	1	159
24	CSW24012X45	12	MXT45	4-1/2	1	147
24	CSW24014X25	14	MXT25	2-1/2	3/4	168
24	CSW24014X30	14	MXT30	3	7/8	217
24	CSW24014X35	14	MXT35	3-1/2	7/8	204
24	CSW24014X40	14	MXT40	4	1	188
24	CSW24014X45	14	MXT45	4-1/2	1	176
24	CSW24016X25	16	MXT25	2-1/2	3/4	201
24	CSW24016X30	16	MXT30	3	7/8	249
24	CSW24016X35	16	MXT35	3-1/2	7/8	236
24	CSW24016X40	16	MXT40	4	1	218
24	CSW24016X45	16	MXT45	4-1/2	1	206
24	CSW24016X50	16	MXT50	5	1	248
24	CSW24018X25	18	MXT25	2-1/2	3/4	256
24	CSW24018X30	18	MXT30	3	7/8	268

* General position for bushing face - for position per application consult *Martin*.

BOLD TYPE INDICATES PRODUCT CARRIED IN STOCK. Other sizes are available for quick delivery from nearest *Martin* facility.



SECTION A-A

Standard Duty Wing Pulleys

Diameter (A)	Part Number	Face (C)	Hub	Max Bore	Setback (B)*	Approx. Weight (lbs)
24	CSW24018X35	18	MXT35	3-1/2	7/8	254
24	CSW24018X40	18	MXT40	4	1	248
24	CSW24018X45	18	MXT45	4-1/2	1	236
24	CSW24018X50	18	MXT50	5	1	280
24	CSW24020X25	20	MXT25	2-1/2	3/4	278
24	CSW24020X30	20	MXT30	3	7/8	290
24	CSW24020X35	20	MXT35	3-1/2	7/8	276
24	CSW24020X40	20	MXT40	4	1	266
24	CSW24020X45	20	MXT45	4-1/2	1	274
24	CSW24020X50	20	MXT50	5	1	317
24	CSW24022X25	22	MXT25	2-1/2	3/4	300
24	CSW24022X30	22	MXT30	3	7/8	311
24	CSW24022X35	22	MXT35	3-1/2	7/8	297
24	CSW24022X40	22	MXT40	4	1	288
24	CSW24022X45	22	MXT45	4-1/2	1	296
24	CSW24022X50	22	MXT50	5	1	345
24	CSW24024X25	24	MXT25	2-1/2	3/4	322
24	CSW24024X30	24	MXT30	3	7/8	333
24	CSW24024X35	24	MXT35	3-1/2	7/8	319
24	CSW24024X40	24	MXT40	4	1	310
24	CSW24024X45	24	MXT45	4-1/2	1	305
24	CSW24024X50	24	MXT50	5	1	378
24	CSW24026X25	26	MXT25	2-1/2	3/4	344
24	CSW24026X30	26	MXT30	3	7/8	355
24	CSW24026X35	26	MXT35	3-1/2	7/8	341
24	CSW24026X40	26	MXT40	4	1	332
24	CSW24026X45	26	MXT45	4-1/2	1	327
24	CSW24026X50	26	MXT50	5	1	380
24	CSW24028X30	28	MXT30	3	7/8	377
24	CSW24028X50	28	MXT50	5	1	402
24	CSW24030X25	30	MXT25	2-1/2	3/4	388
24	CSW24030X30	30	MXT30	3	7/8	399
24	CSW24030X35	30	MXT35	3-1/2	7/8	385
24	CSW24030X40	30	MXT40	4	1	375
24	CSW24030X45	30	MXT45	4-1/2	1	370
24	CSW24030X50	30	MXT50	5	1	424
24	CSW24032X25	32	MXT25	2-1/2	3/4	410
24	CSW24032X30	32	MXT30	3	7/8	421
24	CSW24032X35	32	MXT35	3-1/2	7/8	407
24	CSW24032X40	32	MXT40	4	1	397
24	CSW24032X45	32	MXT45	4-1/2	1	392
24	CSW24032X50	32	MXT50	5	1	446

Standard Duty Wing Pulleys

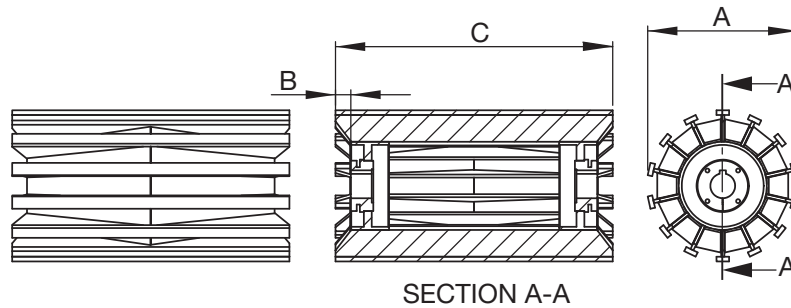
Diameter (A)	Part Number	Face (C)	Hub	Max Bore	Setback (B)*	Approx. Weight (lbs)
24	CSW24036X25	36	MXT25	2-1/2	3/4	454
24	CSW24036X30	36	MXT30	3	7/8	465
24	CSW24036X35	36	MXT35	3-1/2	7/8	451
24	CSW24036X40	36	MXT40	4	1	440
24	CSW24036X45	36	MXT45	4-1/2	1	436
24	CSW24036X50	36	MXT50	5	1	490
24	CSW24036X60	36	MXT60	6	1-1/8	491
24	CSW24038X25	38	MXT25	2-1/2	3/4	476
24	CSW24038X30	38	MXT30	3	7/8	487
24	CSW24038X35	38	MXT35	3-1/2	7/8	473
24	CSW24038X40	38	MXT40	4	1	462
24	CSW24038X45	38	MXT45	4-1/2	1	457
24	CSW24038X50	38	MXT50	5	1	512
24	CSW24040X25	40	MXT25	2-1/2	3/4	498
24	CSW24040X30	40	MXT30	3	7/8	510
24	CSW24040X35	40	MXT35	3-1/2	7/8	495
24	CSW24040X40	40	MXT40	4	1	484
24	CSW24040X45	40	MXT45	4-1/2	1	479
24	CSW24040X50	40	MXT50	5	1	534
24	CSW24044X25	44	MXT25	2-1/2	3/4	542
24	CSW24044X30	44	MXT30	3	7/8	554
24	CSW24044X35	44	MXT35	3-1/2	7/8	539
24	CSW24044X40	44	MXT40	4	1	528
24	CSW24044X45	44	MXT45	4-1/2	1	523
24	CSW24044X50	44	MXT50	5	1	578
24	CSW24044X70	44	MXT70	7	1-1/2	581
24	CSW24046X25	46	MXT25	2-1/2	3/4	564
24	CSW24046X30	46	MXT30	3	7/8	576
24	CSW24046X35	46	MXT35	3-1/2	7/8	562
24	CSW24046X40	46	MXT40	4	1	550
24	CSW24046X45	46	MXT45	4-1/2	1	545
24	CSW24051X25	51	MXT25	2-1/2	3/4	652
24	CSW24051X30	51	MXT30	3	7/8	664
24	CSW24051X35	51	MXT35	3-1/2	7/8	650
24	CSW24051X40	51	MXT40	4	1	631
24	CSW24051X45	51	MXT45	4-1/2	1	621
24	CSW24051X50	51	MXT50	5	1	688
24	CSW24051X60	51	MXT60	6	1-1/8	699
24	CSW24054X25	54	MXT25	2-1/2	3/4	685
24	CSW24054X30	54	MXT30	3	7/8	697
24	CSW24054X35	54	MXT35	3-1/2	7/8	683
24	CSW24057X25	57	MXT25	2-1/2	3/4	719

* General position for bushing face - for position per application consult *Martin*.

BOLD TYPE INDICATES PRODUCT CARRIED IN STOCK. Other sizes are available for quick delivery from nearest *Martin* facility.

Wing Pulleys — Standard Duty — M-HE Bushed

Martin



Standard Duty Drum Pulleys — M-HE Bushed

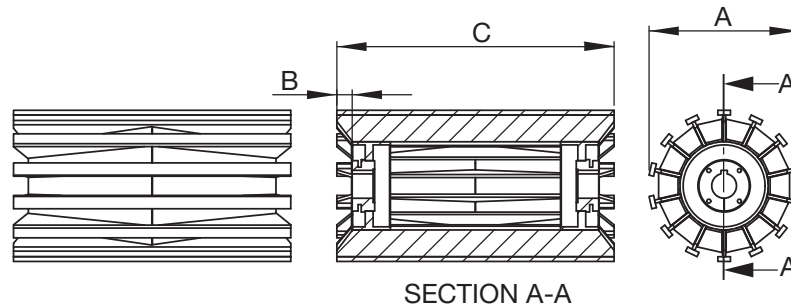
Diameter (A)	Part Number	Face (C)	Hub	Max Bore	Setback (B)*	Approx. Weight (lbs)
8	CSW08020H25	20	M-HE25	2-1/2	3/4	65
8	CSW08026H25	26	M-HE25	2-1/2	3/4	71
8	CSW08028H25	28	M-HE25	2-1/2	3/4	76
8	CSW08030H25	30	M-HE25	2-1/2	3/4	81
8	CSW08032H25	32	M-HE25	2-1/2	3/4	86
8	CSW08038H25	38	M-HE25	2-1/2	3/4	103
8	CSW08051H25	51	M-HE25	2-1/2	3/4	138
8	CSW08063H25	63	M-HE25	2-1/2	3/4	171
8	CSW08063H30	63	M-HE30	3	7/8	258
10	CSW10020H25	20	M-HE25	2-1/2	3/4	67
10	CSW10026H25	26	M-HE25	2-1/2	3/4	86
10	CSW10026H30	26	M-HE30	3	7/8	93
10	CSW10032H25	32	M-HE25	2-1/2	3/4	105
10	CSW10038H25	38	M-HE25	2-1/2	3/4	127
10	CSW10038H35	38	M-HE35	3-1/2	7/8	132
10	CSW10044H25	44	M-HE25	2-1/2	3/4	146
10	CSW10044H30	44	M-HE30	3	7/8	148
10	CSW10051H25	51	M-HE25	2-1/2	3/4	171
10	CSW10051H30	51	M-HE30	3	7/8	179
10	CSW10051H35	51	M-HE35	3-1/2	7/8	175
10	CSW10057H30	57	M-HE30	3	7/8	190
10	CSW10057H35	57	M-HE35	3-1/2	7/8	191
10	CSW10063H25	63	M-HE25	2-1/2	3/4	212
10	CSW10063H30	63	M-HE30	3	7/8	213
10	CSW10063H35	63	M-HE35	3-1/2	7/8	215
12	CSW12020H25	20	M-HE25	2-1/2	3/4	85
12	CSW12026H25	26	M-HE25	2-1/2	3/4	110
12	CSW12026H30	26	M-HE30	3	7/8	115
12	CSW12026H35	26	M-HE35	3-1/2	7/8	114
12	CSW12028H25	28	M-HE25	2-1/2	3/4	118
12	CSW12032H25	32	M-HE25	2-1/2	3/4	135
12	CSW12032H30	32	M-HE30	3	7/8	137
12	CSW12038H25	38	M-HE25	2-1/2	3/4	160
12	CSW12038H30	38	M-HE30	3	7/8	159
12	CSW12038H35	38	M-HE35	3-1/2	7/8	158
12	CSW12038H40	38	M-HE40	4	1	162
12	CSW12044H25	44	M-HE25	2-1/2	3/4	186
12	CSW12044H30	44	M-HE30	3	7/8	181
12	CSW12044H35	44	M-HE35	3-1/2	7/8	180
12	CSW12044H40	44	M-HE40	4	1	181
12	CSW12051H25	51	M-HE25	2-1/2	3/4	218
12	CSW12051H30	51	M-HE30	3	7/8	214
12	CSW12051H35	51	M-HE35	3-1/2	7/8	212
12	CSW12057H35	57	M-HE35	3-1/2	7/8	234
12	CSW12063H25	63	M-HE25	2-1/2	3/4	285
14	CSW14026H25	26	M-HE25	2-1/2	3/4	138
14	CSW14026H30	26	M-HE30	3	7/8	141
14	CSW14026H35	26	M-HE35	3-1/2	7/8	139
14	CSW14032H25	32	M-HE25	2-1/2	3/4	170
14	CSW14032H30	32	M-HE30	3	7/8	169
14	CSW14034H25	34	M-HE25	2-1/2	3/4	181
14	CSW14034H30	34	M-HE30	3	7/8	179
14	CSW14036H30	36	M-HE30	3	7/8	189

Standard Duty Drum Pulleys — M-HE Bushed

Diameter (A)	Part Number	Face (C)	Hub	Max Bore	Setback (B)*	Approx. Weight (lbs)
14	CSW14038H25	38	M-HE25	2-1/2	3/4	202
14	CSW14038H30	38	M-HE30	3	7/8	198
14	CSW14038H40	38	M-HE40	4	1	198
14	CSW14038H45	38	M-HE45	4-1/2	1	206
14	CSW14038H50	38	M-HE50	5	1	231
14	CSW14044H25	44	M-HE25	2-1/2	3/4	235
14	CSW14044H30	44	M-HE30	3	7/8	227
14	CSW14044H40	44	M-HE40	4	1	223
14	CSW14046H30	46	M-HE30	3	7/8	236
14	CSW14051H25	51	M-HE25	2-1/2	3/4	275
14	CSW14051H30	51	M-HE30	3	7/8	267
14	CSW14051H40	51	M-HE40	4	1	264
14	CSW14051H45	51	M-HE45	4-1/2	1	272
14	CSW14054H30	54	M-HE30	3	7/8	282
14	CSW14057H30	57	M-HE30	3	7/8	296
14	CSW14057H35	57	M-HE35	3-1/2	7/8	294
14	CSW14057H40	57	M-HE40	4	1	289
14	CSW14063H25	63	M-HE25	2-1/2	3/4	343
14	CSW14063H30	63	M-HE30	3	7/8	331
14	CSW14063H35	63	M-HE35	3-1/2	7/8	329
14	CSW14063H40	63	M-HE40	4	1	326
16	CSW16020H25	20	M-HE25	2-1/2	3/4	120
16	CSW16022H30	22	M-HE30	3	7/8	137
16	CSW16026H25	26	M-HE25	2-1/2	3/4	156
16	CSW16026H30	26	M-HE30	3	7/8	159
16	CSW16028H25	28	M-HE25	2-1/2	3/4	169
16	CSW16028H30	28	M-HE30	3	7/8	170
16	CSW16028H35	28	M-HE35	3-1/2	7/8	168
16	CSW16032H25	32	M-HE25	2-1/2	3/4	194
16	CSW16032H30	32	M-HE30	3	7/8	200
16	CSW16038H25	38	M-HE25	2-1/2	3/4	231
16	CSW16038H30	38	M-HE30	3	7/8	226
16	CSW16038H35	38	M-HE35	3-1/2	7/8	224
16	CSW16038H45	38	M-HE45	4-1/2	1	233
16	CSW16040H40	40	M-HE40	4	1	235
16	CSW16040H45	40	M-HE45	4-1/2	1	243
16	CSW16044H25	44	M-HE25	2-1/2	3/4	268
16	CSW16044H30	44	M-HE30	3	7/8	260
16	CSW16044H35	44	M-HE35	3-1/2	7/8	257
16	CSW16044H40	44	M-HE40	4	1	255
16	CSW16044H45	44	M-HE45	4-1/2	1	263
16	CSW16051H30	51	M-HE30	3	7/8	306
16	CSW16051H35	51	M-HE35	3-1/2	7/8	303
16	CSW16051H40	51	M-HE40	4	1	302
16	CSW16051H45	51	M-HE45	4-1/2	1	310
16	CSW16057H40	57	M-HE40	4	1	332
16	CSW16057H45	57	M-HE45	4-1/2	1	340
16	CSW16063H25	63	M-HE25	2-1/2	3/4	392
16	CSW16063H30	63	M-HE30	3	7/8	380
16	CSW16063H35	63	M-HE35	3-1/2	7/8	378
16	CSW16063H45	63	M-HE45	4-1/2	1	382
16	CSW16063H50	63	M-HE50	5	1	424
16	CSW16076H35	76	M-HE35	3-1/2	7/8	457
18	CSW18026H25	26	M-HE25	2-1/2	3/4	228

* General position for bushing face - for position per application consult *Martin*.

BOLD TYPE INDICATES PRODUCT CARRIED IN STOCK. Other sizes are available for quick delivery from nearest *Martin* facility.



Standard Duty Drum Pulleys — M-HE Bushed

Diameter (A)	Part Number	Face (C)	Hub	Max Bore	Setback (B)*	Approx. Weight (lbs)
18	CSW18026H40	26	M-HE40	4	1	243
18	CSW18028H30	28	M-HE30	3	7/8	260
18	CSW18028H35	28	M-HE35	3-1/2	7/8	257
18	CSW18030H40	30	M-HE40	4	1	276
18	CSW18032H25	32	M-HE25	2-1/2	3/4	278
18	CSW18032H30	32	M-HE30	3	7/8	296
18	CSW18032H35	32	M-HE35	3-1/2	7/8	293
18	CSW18038H25	38	M-HE25	2-1/2	3/4	327
18	CSW18038H30	38	M-HE30	3	7/8	350
18	CSW18038H35	38	M-HE35	3-1/2	7/8	347
18	CSW18038H40	38	M-HE40	4	1	343
18	CSW18038H45	38	M-HE45	4-1/2	1	350
18	CSW18038H50	38	M-HE50	5	1	369
18	CSW18040H40	40	M-HE40	4	1	359
18	CSW18040H45	40	M-HE45	4-1/2	1	367
18	CSW18044H25	44	M-HE25	2-1/2	3/4	377
18	CSW18044H30	44	M-HE30	3	7/8	404
18	CSW18044H35	44	M-HE35	3-1/2	7/8	401
18	CSW18044H40	44	M-HE40	4	1	392
18	CSW18044H45	44	M-HE45	4-1/2	1	400
18	CSW18044H50	44	M-HE50	5	1	414
18	CSW18046H45	46	M-HE45	4-1/2	1	417
18	CSW18051H35	51	M-HE35	3-1/2	7/8	304
18	CSW18051H40	51	M-HE40	4	1	462
18	CSW18051H50	51	M-HE50	5	1	495
18	CSW18057H30	57	M-HE30	3	7/8	528
18	CSW18057H45	57	M-HE45	4-1/2	1	520
18	CSW18063H35	63	M-HE35	3-1/2	7/8	375
18	CSW18063H45	63	M-HE45	4-1/2	1	581
18	CSW18063H50	63	M-HE50	5	1	613
18	CSW18063H60	63	M-HE60	6	1-1/8	644
18	CSW18076H35	76	M-HE35	3-1/2	7/8	713
18	CSW18087H40	87	M-HE40	4	1	783
20	CSW20026H25	26	M-HE25	2-1/2	3/4	251
20	CSW20026H30	26	M-HE30	3	7/8	255
20	CSW20026H40	26	M-HE40	4	1	264
20	CSW20028H30	28	M-HE30	3	7/8	272
20	CSW20028H35	28	M-HE35	3-1/2	7/8	270
20	CSW20030H40	30	M-HE40	4	1	301
20	CSW20032H25	32	M-HE25	2-1/2	3/4	306
20	CSW20032H30	32	M-HE30	3	7/8	305
20	CSW20038H25	38	M-HE25	2-1/2	3/4	361
20	CSW20038H30	38	M-HE30	3	7/8	356
20	CSW20038H35	38	M-HE35	3-1/2	7/8	354
20	CSW20038H40	38	M-HE40	4	1	375
20	CSW20038H45	38	M-HE45	4-1/2	1	382
20	CSW20038H50	38	M-HE50	5	1	400
20	CSW20040H40	40	M-HE40	4	1	393
20	CSW20040H45	40	M-HE45	4-1/2	1	401

Standard Duty Drum Pulleys — M-HE Bushed

Diameter (A)	Part Number	Face (C)	Hub	Max Bore	Setback (B)*	Approx. Weight (lbs)
20	CSW20044H30	44	M-HE30	3	7/8	407
20	CSW20044H35	44	M-HE35	3-1/2	7/8	405
20	CSW20044H40	44	M-HE40	4	1	430
20	CSW20044H50	44	M-HE50	5	1	451
20	CSW20044H60	44	M-HE60	6	1-1/8	460
20	CSW20046H45	46	M-HE45	4-1/2	1	456
20	CSW20051H35	51	M-HE35	3-1/2	7/8	482
20	CSW20051H40	51	M-HE40	4	1	506
20	CSW20051H50	51	M-HE50	5	1	538
20	CSW20051H60	51	M-HE60	6	1-1/8	558
20	CSW20057H30	57	M-HE30	3	7/8	535
20	CSW20057H40	57	M-HE40	4	1	562
20	CSW20057H45	57	M-HE45	4-1/2	1	570
20	CSW20057H50	57	M-HE50	5	1	589
20	CSW20063H45	63	M-HE45	4-1/2	1	637
20	CSW20063H50	63	M-HE50	5	1	667
24	CSW24026H30	26	M-HE30	3	7/8	335
24	CSW24028H30	28	M-HE30	3	7/8	358
24	CSW24028H50	28	M-HE50	5	1	382
24	CSW24032H30	32	M-HE30	3	7/8	405
24	CSW24036H60	36	M-HE60	6	1-1/8	491
24	CSW24038H30	38	M-HE30	3	7/8	475
24	CSW24038H35	38	M-HE35	3-1/2	7/8	473
24	CSW24038H40	38	M-HE40	4	1	471
24	CSW24038H45	38	M-HE45	4-1/2	1	471
24	CSW24038H50	38	M-HE50	5	1	491
24	CSW24040H40	40	M-HE40	4	1	493
24	CSW24040H45	40	M-HE45	4-1/2	1	501
24	CSW24044H35	44	M-HE35	3-1/2	7/8	497
24	CSW24044H40	44	M-HE40	4	1	493
24	CSW24044H50	44	M-HE50	5	1	513
24	CSW24044H70	44	M-HE70	7	1-1/4	580
24	CSW24046H45	46	M-HE45	4-1/2	1	566
24	CSW24051H40	51	M-HE40	4	1	657
24	CSW24051H45	51	M-HE45	4-1/2	1	648
24	CSW24051H50	51	M-HE50	5	1	660
24	CSW24051H60	51	M-HE60	6	1-1/8	699
24	CSW24057H45	57	M-HE45	4-1/2	1	719
24	CSW24057H50	57	M-HE50	5	1	726
24	CSW24063H45	63	M-HE45	4-1/2	1	806
24	CSW24063H50	63	M-HE50	5	1	818
24	CSW24063H60	63	M-HE60	6	1-1/8	875
30	CSW30044H50	44	M-HE50	5	1	708
30	CSW30051H40	51	M-HE40	4	1	1018
30	CSW30051H45	51	M-HE45	4-1/2	1	837
30	CSW30051H50	51	M-HE50	5	1	849
30	CSW30057H50	57	M-HE50	5	1	932
30	CSW30057H60	57	M-HE60	6	1-1/8	921
30	CSW30057H70	57	M-HE70	7	1-1/4	987

* General position for bushing face - for position per application consult *Martin*.

BOLD TYPE INDICATES PRODUCT CARRIED IN STOCK. Other sizes are available for quick delivery from nearest *Martin* facility.

Wing Pulleys — Mine Duty

Martin

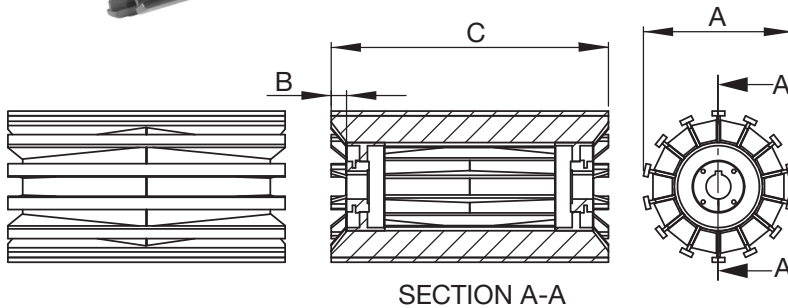
Mine Duty Wing Pulleys



Martin's Mine Duty Wing Pulleys are constructed from extremely heavy materials and are recognized in the industry as the most aggressive 'Mine Duty' stock pulley on the shelf. All *Martin* wing pulleys utilize the unique 'end-pipe' design, which offers ultimate protection against wing folding and hub-weld fatigue. Our minimum 5/8" thick contact bar yields additional life in abrasive applications where our competitors thinner bar does not. Additionally, our 3/8" thick wing and 1/4" gussets offer greater structural support in aggressive applications.

FEATURES:

- Available in 8" thru 60" Diameter
- Minimum 5/8" x 1-1/2" Contact Bars
- Minimum 3/8" Thick Wings
- Minimum 1/4" Gussets
- Features Unique *Martin* 'End Pipe' design
 - Better Protection Against Wing Folding
 - Better Protection Against Hub-Weld Fatigue
- Several Hub/Bushing Systems Available



Mine Duty Wing Pulleys

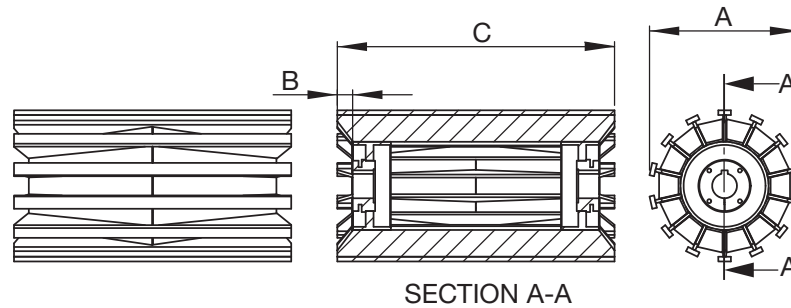
Diameter (A)	Part Number	Face (C)	Hub	Max Bore	Setback (B)*	Approx. Weight (lbs)
8	CMW08012X25	12	MXT25	2-1/2	3/4	55
8	CMW08014X25	14	MXT25	2-1/2	3/4	62
8	CMW08016X25	16	MXT25	2-1/2	3/4	72
8	CMW08018X25	18	MXT25	2-1/2	3/4	81
8	CMW08020X25	20	MXT25	2-1/2	3/4	90
8	CMW08022X25	22	MXT25	2-1/2	3/4	99
8	CMW08024X25	24	MXT25	2-1/2	3/4	108
8	CMW08026X25	26	MXT25	2-1/2	3/4	116
8	CMW08030X25	30	MXT25	2-1/2	3/4	134
8	CMW08032X25	32	MXT25	2-1/2	3/4	143
8	CMW08044X25	44	MXT25	2-1/2	3/4	198
10	CMW10012X25	12	MXT25	2-1/2	3/4	63
10	CMW10012X30	12	MXT30	3	7/8	73
10	CMW10014X25	14	MXT25	2-1/2	3/4	72
10	CMW10014X30	14	MXT30	3	7/8	77
10	CMW10016X25	16	MXT25	2-1/2	3/4	84
10	CMW10016X30	16	MXT30	3	7/8	90
10	CMW10018X25	18	MXT25	2-1/2	3/4	95
10	CMW10018X30	18	MXT30	3	7/8	102
10	CMW10020X25	20	MXT25	2-1/2	3/4	106
10	CMW10020X30	20	MXT30	3	7/8	112
10	CMW10022X25	22	MXT25	2-1/2	3/4	116
10	CMW10022X30	22	MXT30	3	7/8	122
10	CMW10024X25	24	MXT25	2-1/2	3/4	127
10	CMW10024X30	24	MXT30	3	7/8	131
10	CMW10026X25	26	MXT25	2-1/2	3/4	137
10	CMW10026X30	26	MXT30	3	7/8	141
10	CMW10030X25	30	MXT25	2-1/2	3/4	159
10	CMW10030X30	30	MXT30	3	7/8	160
10	CMW10032X25	32	MXT25	2-1/2	3/4	169
10	CMW10032X30	32	MXT30	3	7/8	170
10	CMW10036X25	36	MXT25	2-1/2	3/4	191
10	CMW10036X30	36	MXT30	3	7/8	189
10	CMW10038X25	38	MXT25	2-1/2	3/4	204
10	CMW10038X30	38	MXT30	3	7/8	206
10	CMW10044X25	44	MXT25	2-1/2	3/4	236
10	CMW10044X30	44	MXT30	3	7/8	235
10	CMW10051X25	51	MXT25	2-1/2	3/4	277

Mine Duty Wing Pulleys

Diameter (A)	Part Number	Face (C)	Hub	Max Bore	Setback (B)*	Approx. Weight (lbs)
10	CMW10063X30	63	MXT30	3	7/8	340
12	CMW12012X25	12	MXT25	2-1/2	3/4	78
12	CMW12012X30	12	MXT30	3	7/8	88
12	CMW12012X35	12	MXT35	3-1/2	7/8	82
12	CMW12014X25	14	MXT25	2-1/2	3/4	91
12	CMW12014X30	14	MXT30	3	7/8	95
12	CMW12014X35	14	MXT35	3-1/2	7/8	85
12	CMW12016X25	16	MXT25	2-1/2	3/4	106
12	CMW12016X30	16	MXT30	3	7/8	110
12	CMW12016X35	16	MXT35	3-1/2	7/8	100
12	CMW12018X25	18	MXT25	2-1/2	3/4	120
12	CMW12018X30	18	MXT30	3	7/8	125
12	CMW12018X35	18	MXT35	3-1/2	7/8	116
12	CMW12020X25	20	MXT25	2-1/2	3/4	134
12	CMW12020X30	20	MXT30	3	7/8	138
12	CMW12020X35	20	MXT35	3-1/2	7/8	132
12	CMW12022X25	22	MXT25	2-1/2	3/4	148
12	CMW12022X30	22	MXT30	3	7/8	150
12	CMW12022X35	22	MXT35	3-1/2	7/8	144
12	CMW12024X25	24	MXT25	2-1/2	3/4	162
12	CMW12024X30	24	MXT30	3	7/8	163
12	CMW12024X35	24	MXT35	3-1/2	7/8	157
12	CMW12026X25	26	MXT25	2-1/2	3/4	176
12	CMW12026X30	26	MXT30	3	7/8	175
12	CMW12026X35	26	MXT35	3-1/2	7/8	169
12	CMW12030X25	30	MXT25	2-1/2	3/4	204
12	CMW12030X30	30	MXT30	3	7/8	200
12	CMW12030X35	30	MXT35	3-1/2	7/8	194
12	CMW12032X25	32	MXT25	2-1/2	3/4	218
12	CMW12032X30	32	MXT30	3	7/8	213
12	CMW12032X35	32	MXT35	3-1/2	7/8	207
12	CMW12036X25	36	MXT25	2-1/2	3/4	246
12	CMW12036X30	36	MXT30	3	7/8	238
12	CMW12036X35	36	MXT35	3-1/2	7/8	231
12	CMW12038X25	38	MXT25	2-1/2	3/4	260
12	CMW12038X30	38	MXT30	3	7/8	250
12	CMW12038X35	38	MXT35	3-1/2	7/8	244
12	CMW12040X25	40	MXT25	2-1/2	3/4	274

* General position for bushing face - for position per application consult *Martin*.

BOLD TYPE INDICATES PRODUCT CARRIED IN STOCK. Other sizes are available for quick delivery from nearest *Martin* facility.



Mine Duty Wing Pulley

Diameter (A)	Part Number	Face (C)	Hub	Max Bore	Setback (B)*	Approx. Weight (lbs)
12	CMW12040X30	40	MXT30	3	7/8	263
12	CMW12040X35	44	MXT35	3-1/2	7/8	256
12	CMW12044X25	44	MXT25	2-1/2	3/4	302
12	CMW12044X30	44	MXT30	3	7/8	288
12	CMW12044X35	44	MXT35	3-1/2	7/8	281
12	CMW12051X25	51	MXT25	2-1/2	3/4	354
12	CMW12051X30	51	MXT30	3	7/8	338
12	CMW12051X35	51	MXT35	3-1/2	7/8	332
12	CMW12051X40	51	MXT40	4	1	330
12	CMW12063X30	63	MXT30	3	7/8	420
14	CMW14012X25	63	MXT25	2-1/2	3/4	96
14	CMW14012X30	12	MXT30	3	7/8	104
14	CMW14012X35	12	MXT35	3-1/2	7/8	96
14	CMW14012X40	12	MXT40	4	1	111
14	CMW14014X25	14	MXT25	2-1/2	3/4	112
14	CMW14014X30	14	MXT30	3	7/8	114
14	CMW14014X35	14	MXT35	3-1/2	7/8	102
14	CMW14014X40	14	MXT40	4	1	111
14	CMW14016X25	16	MXT25	2-1/2	3/4	131
14	CMW14016X30	16	MXT30	3	7/8	133
14	CMW14016X35	16	MXT35	3-1/2	7/8	121
14	CMW14016X40	16	MXT40	4	1	130
14	CMW14018X25	18	MXT25	2-1/2	3/4	148
14	CMW14018X30	18	MXT30	3	7/8	152
14	CMW14018X35	18	MXT35	3-1/2	7/8	140
14	CMW14018X40	18	MXT40	4	1	149
14	CMW14020X25	20	MXT25	2-1/2	3/4	166
14	CMW14020X30	20	MXT30	3	7/8	167
14	CMW14020X35	20	MXT35	3-1/2	7/8	159
14	CMW14020X40	20	MXT40	4	1	168
14	CMW14022X25	22	MXT25	2-1/2	3/4	184
14	CMW14022X30	22	MXT30	3	7/8	183
14	CMW14022X35	22	MXT35	3-1/2	7/8	175
14	CMW14022X40	22	MXT40	4	1	186
14	CMW14024X25	24	MXT25	2-1/2	3/4	201
14	CMW14024X30	24	MXT30	3	7/8	199
14	CMW14024X35	24	MXT35	3-1/2	7/8	191
14	CMW14024X40	24	MXT40	4	1	197
14	CMW14026X25	26	MXT25	2-1/2	3/4	219
14	CMW14026X30	26	MXT30	3	7/8	215
14	CMW14026X35	26	MXT35	3-1/2	7/8	207
14	CMW14026X40	26	MXT40	4	1	211
14	CMW14030X25	30	MXT25	2-1/2	3/4	255
14	CMW14030X30	30	MXT30	3	7/8	248
14	CMW14030X35	30	MXT35	3-1/2	7/8	239
14	CMW14030X40	30	MXT40	4	1	240
14	CMW14032X25	32	MXT25	2-1/2	3/4	272
14	CMW14032X30	32	MXT30	3	7/8	264
14	CMW14032X35	32	MXT35	3-1/2	7/8	255
14	CMW14032X40	32	MXT40	4	1	254
14	CMW14036X25	36	MXT25	2-1/2	3/4	308
14	CMW14036X30	36	MXT30	3	7/8	296
14	CMW14036X35	36	MXT35	3-1/2	7/8	287

Mine Duty Wing Pulley

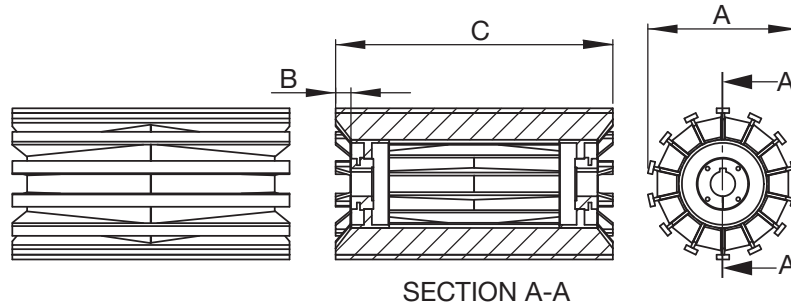
Diameter (A)	Part Number	Face (C)	Hub	Max Bore	Setback (B)*	Approx. Weight (lbs)
14	CMW14036X40	36	MXT40	4	1	283
14	CMW14038X25	38	MXT25	2-1/2	3/4	326
14	CMW14038X30	38	MXT30	3	7/8	312
14	CMW14038X35	38	MXT35	3-1/2	7/8	303
14	CMW14038X40	38	MXT40	4	1	297
14	CMW14040X25	40	MXT25	2-1/2	3/4	343
14	CMW14040X30	40	MXT30	3	7/8	328
14	CMW14040X35	40	MXT35	3-1/2	7/8	319
14	CMW14040X40	40	MXT40	4	1	311
14	CMW14044X25	44	MXT25	2-1/2	3/4	379
14	CMW14044X30	44	MXT30	3	7/8	360
14	CMW14044X35	44	MXT35	3-1/2	7/8	351
14	CMW14044X40	44	MXT40	4	1	340
14	CMW14046X25	46	MXT25	2-1/2	3/4	397
14	CMW14046X30	46	MXT30	3	7/8	376
14	CMW14046X35	46	MXT35	3-1/2	7/8	368
14	CMW14046X40	46	MXT40	4	1	354
14	CMW14051X25	51	MXT25	2-1/2	3/4	444
14	CMW14051X30	51	MXT30	3	7/8	423
14	CMW14051X35	51	MXT35	3-1/2	7/8	414
14	CMW14051X40	51	MXT40	4	1	402
14	CMW14063X25	63	MXT25	2-1/2	3/4	554
16	CMW16012X25	12	MXT25	2-1/2	3/4	109
16	CMW16012X30	12	MXT30	3	7/8	116
16	CMW16012X35	12	MXT35	3-1/2	7/8	107
16	CMW16012X40	12	MXT40	4	1	120
16	CMW16014X25	14	MXT25	2-1/2	3/4	127
16	CMW16014X30	14	MXT30	3	7/8	128
16	CMW16014X35	14	MXT35	3-1/2	7/8	115
16	CMW16014X40	14	MXT40	4	1	122
16	CMW16016X25	16	MXT25	2-1/2	3/4	148
16	CMW16016X30	16	MXT30	3	7/8	149
16	CMW16016X35	16	MXT35	3-1/2	7/8	136
16	CMW16016X40	16	MXT40	4	1	143
16	CMW16018X25	18	MXT25	2-1/2	3/4	168
16	CMW16018X30	18	MXT30	3	7/8	170
16	CMW16018X35	18	MXT35	3-1/2	7/8	157
16	CMW16018X40	18	MXT40	4	1	164
16	CMW16020X25	20	MXT25	2-1/2	3/4	188
16	CMW16020X30	20	MXT30	3	7/8	188
16	CMW16020X35	20	MXT35	3-1/2	7/8	179
16	CMW16020X40	20	MXT40	4	1	185
16	CMW16022X25	22	MXT25	2-1/2	3/4	208
16	CMW16022X30	22	MXT30	3	7/8	207
16	CMW16022X35	22	MXT35	3-1/2	7/8	197
16	CMW16022X40	22	MXT40	4	1	207
16	CMW16024X25	24	MXT25	2-1/2	3/4	228
16	CMW16024X30	24	MXT30	3	7/8	225
16	CMW16024X35	24	MXT35	3-1/2	7/8	215
16	CMW16024X40	24	MXT40	4	1	219
16	CMW16026X25	26	MXT25	2-1/2	3/4	248
16	CMW16026X30	26	MXT30	3	7/8	244
16	CMW16026X35	26	MXT35	3-1/2	7/8	234

* General position for bushing face - for position per application consult *Martin*.

BOLD TYPE INDICATES PRODUCT CARRIED IN STOCK. Other sizes are available for quick delivery from nearest *Martin* facility.

Wing Pulleys — Mine Duty

Martin



Mine Duty Wing Pulley

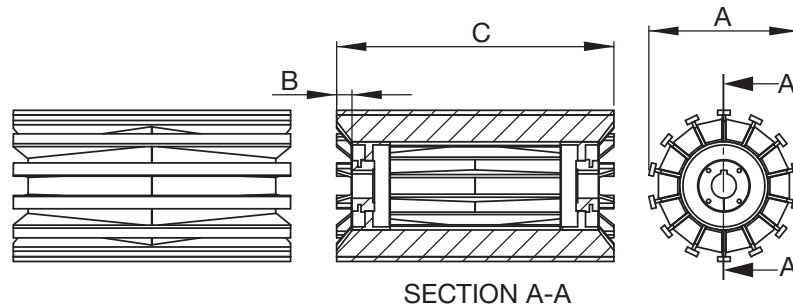
Diameter (A)	Part Number	Face (C)	Hub	Max Bore	Setback (B)*	Approx. Weight (lbs)
16	CMW16026X40	26	MXT40	4	1	236
16	CMW16030X25	30	MXT25	2-1/2	3/4	288
16	CMW16030X30	30	MXT30	3	7/8	281
16	CMW16030X35	30	MXT35	3-1/2	7/8	271
16	CMW16030X40	30	MXT40	4	1	270
16	CMW16032X35	32	MXT35	3-1/2	7/8	289
16	CMW16036X25	36	MXT25	2-1/2	3/4	349
16	CMW16036X30	36	MXT30	3	7/8	336
16	CMW16036X35	36	MXT35	3-1/2	7/8	326
16	CMW16036X40	36	MXT40	4	1	320
16	CMW16038X25	38	MXT25	2-1/2	3/4	370
16	CMW16038X30	38	MXT30	3	7/8	355
16	CMW16038X35	38	MXT35	3-1/2	7/8	345
16	CMW16038X40	38	MXT40	4	1	337
16	CMW16040X25	40	MXT25	2-1/2	3/4	390
16	CMW16040X30	40	MXT30	3	7/8	374
16	CMW16040X35	40	MXT35	3-1/2	7/8	364
16	CMW16040X40	40	MXT40	4	1	354
16	CMW16044X25	44	MXT25	2-1/2	3/4	430
16	CMW16044X30	44	MXT30	3	7/8	411
16	CMW16044X35	44	MXT35	3-1/2	7/8	401
16	CMW16044X40	44	MXT40	4	1	388
16	CMW16046X25	46	MXT25	2-1/2	3/4	451
16	CMW16046X30	46	MXT30	3	7/8	429
16	CMW16046X35	46	MXT35	3-1/2	7/8	419
16	CMW16046X40	46	MXT40	4	1	405
16	CMW16051X25	51	MXT25	2-1/2	3/4	506
16	CMW16051X30	51	MXT30	3	7/8	483
16	CMW16051X35	51	MXT35	3-1/2	7/8	472
16	CMW16051X40	51	MXT40	4	1	458
16	CMW16063X25	63	MXT25	2-1/2	3/4	630
18	CMW18012X25	12	MXT25	2-1/2	3/4	165
18	CMW18012X30	12	MXT30	3	7/8	140
18	CMW18012X35	12	MXT35	3-1/2	7/8	121
18	CMW18012X40	12	MXT40	4	1	130
18	CMW18012X45	12	MXT45	4-1/2	1	120
18	CMW18014X25	14	MXT25	2-1/2	3/4	142
18	CMW18014X30	14	MXT30	3	7/8	166
18	CMW18014X35	14	MXT35	3-1/2	7/8	151
18	CMW18014X40	14	MXT40	4	1	155
18	CMW18014X45	14	MXT45	4-1/2	1	145
18	CMW18016X25	16	MXT25	2-1/2	3/4	168
18	CMW18016X30	16	MXT30	3	7/8	190
18	CMW18016X35	16	MXT35	3-1/2	7/8	178
18	CMW18016X40	16	MXT40	4	1	181
18	CMW18016X45	16	MXT45	4-1/2	1	171
18	CMW18018X25	18	MXT25	2-1/2	3/4	223
18	CMW18018X30	18	MXT30	3	7/8	214
18	CMW18018X35	18	MXT35	3-1/2	7/8	195
18	CMW18018X40	18	MXT40	4	1	207
18	CMW18018X45	18	MXT45	4-1/2	1	197
18	CMW18020X25	20	MXT25	2-1/2	3/4	226
18	CMW18020X30	20	MXT30	3	7/8	238

Mine Duty Wing Pulley

Diameter (A)	Part Number	Face (C)	Hub	Max Bore	Setback (B)*	Approx. Weight (lbs)
18	CMW18020X35	20	MXT35	3-1/2	7/8	224
18	CMW18020X40	20	MXT40	4	1	234
18	CMW18020X45	20	MXT45	4-1/2	1	223
18	CMW18022X25	22	MXT25	2-1/2	3/4	265
18	CMW18022X30	22	MXT30	3	7/8	262
18	CMW18022X35	22	MXT35	3-1/2	7/8	250
18	CMW18022X40	22	MXT40	4	1	250
18	CMW18022X45	22	MXT45	4-1/2	1	242
18	CMW18024X25	24	MXT25	2-1/2	3/4	286
18	CMW18024X30	24	MXT30	3	7/8	286
18	CMW18024X35	24	MXT35	3-1/2	7/8	274
18	CMW18024X40	24	MXT40	4	1	272
18	CMW18024X45	24	MXT45	4-1/2	1	264
18	CMW18026X25	26	MXT25	2-1/2	3/4	307
18	CMW18026X30	26	MXT30	3	7/8	311
18	CMW18026X35	26	MXT35	3-1/2	7/8	298
18	CMW18026X40	26	MXT40	4	1	294
18	CMW18026X45	26	MXT45	4-1/2	1	286
18	CMW18030X25	30	MXT25	2-1/2	3/4	347
18	CMW18030X30	30	MXT30	3	7/8	359
18	CMW18030X35	30	MXT35	3-1/2	7/8	346
18	CMW18030X40	30	MXT40	4	1	338
18	CMW18030X45	30	MXT45	4-1/2	1	330
18	CMW18032X25	32	MXT25	2-1/2	3/4	367
18	CMW18032X30	32	MXT30	3	7/8	384
18	CMW18032X35	32	MXT35	3-1/2	7/8	370
18	CMW18032X40	32	MXT40	4	1	361
18	CMW18032X45	32	MXT45	4-1/2	1	352
18	CMW18036X25	36	MXT25	2-1/2	3/4	408
18	CMW18036X30	36	MXT30	3	7/8	432
18	CMW18036X35	36	MXT35	3-1/2	7/8	419
18	CMW18036X40	36	MXT40	4	1	405
18	CMW18036X45	36	MXT45	4-1/2	1	397
18	CMW18038X25	38	MXT25	2-1/2	3/4	428
18	CMW18038X30	38	MXT30	3	7/8	457
18	CMW18038X35	38	MXT35	3-1/2	7/8	427
18	CMW18038X40	38	MXT40	4	1	427
18	CMW18038X45	38	MXT45	4-1/2	1	419
18	CMW18040X25	40	MXT25	2-1/2	3/4	449
18	CMW18040X30	40	MXT30	3	7/8	481
18	CMW18040X35	40	MXT35	3-1/2	7/8	468
18	CMW18040X40	40	MXT40	4	1	449
18	CMW18044X25	44	MXT25	2-1/2	3/4	489
18	CMW18044X30	44	MXT30	3	7/8	530
18	CMW18044X35	44	MXT35	3-1/2	7/8	517
18	CMW18044X40	44	MXT40	4	1	494
18	CMW18044X45	44	MXT45	4-1/2	1	486
18	CMW18046X25	46	MXT25	2-1/2	3/4	510
18	CMW18046X30	46	MXT30	3	7/8	554
18	CMW18046X35	46	MXT35	3-1/2	7/8	541
18	CMW18046X40	46	MXT40	4	1	516
18	CMW18046X45	46	MXT45	4-1/2	1	508
18	CMW18051X25	51	MXT25	2-1/2	3/4	588

* General position for bushing face - for position per application consult *Martin*.

BOLD TYPE INDICATES PRODUCT CARRIED IN STOCK. Other sizes are available for quick delivery from nearest *Martin* facility.



Mine Duty Wing Pulley

Diameter (A)	Part Number	Face (C)	Hub	Max Bore	Setback (B)*	Approx. Weight (lbs)
18	CMW18051X30	51	MXT30	3	7/8	622
18	CMW18051X35	51	MXT35	3-1/2	7/8	609
18	CMW18051X40	51	MXT40	4	1	583
18	CMW18051X45	51	MXT45	4-1/2	1	575
18	CMW18054X25	54	MXT25	2-1/2	3/4	618
18	CMW18054X30	54	MXT30	3	7/8	659
18	CMW18063X25	63	MXT25	2-1/2	3/4	737
18	CMW18063X30	63	MXT30	3	7/8	775
20	CMW20012X25	12	MXT25	2-1/2	3/4	182
20	CMW20012X30	12	MXT30	3	7/8	179
20	CMW20012X35	12	MXT35	3-1/2	7/8	161
20	CMW20012X40	12	MXT40	4	1	145
20	CMW20012X45	12	MXT45	4-1/2	1	132
20	CMW20014X25	14	MXT25	2-1/2	3/4	158
20	CMW20014X30	14	MXT30	3	7/8	210
20	CMW20014X35	14	MXT35	3-1/2	7/8	192
20	CMW20014X40	14	MXT40	4	1	172
20	CMW20014X45	14	MXT45	4-1/2	1	159
20	CMW20016X25	16	MXT25	2-1/2	3/4	190
20	CMW20016X30	16	MXT30	3	7/8	242
20	CMW20016X35	16	MXT35	3-1/2	7/8	224
20	CMW20016X40	16	MXT40	4	1	201
20	CMW20016X45	16	MXT45	4-1/2	1	187
20	CMW20018X25	18	MXT25	2-1/2	3/4	250
20	CMW20018X30	18	MXT30	3	7/8	263
20	CMW20018X35	18	MXT35	3-1/2	7/8	241
20	CMW20018X40	18	MXT40	4	1	229
20	CMW20018X45	18	MXT45	4-1/2	1	215
20	CMW20020X25	20	MXT25	2-1/2	3/4	253
20	CMW20020X30	20	MXT30	3	7/8	286
20	CMW20020X35	20	MXT35	3-1/2	7/8	262
20	CMW20020X40	20	MXT40	4	1	250
20	CMW20020X45	20	MXT45	4-1/2	1	244
20	CMW20022X25	22	MXT25	2-1/2	3/4	285
20	CMW20022X30	22	MXT30	3	7/8	309
20	CMW20022X35	22	MXT35	3-1/2	7/8	284
20	CMW20022X40	22	MXT40	4	1	275
20	CMW20022X45	22	MXT45	4-1/2	1	266
20	CMW20024X25	24	MXT25	2-1/2	3/4	319
20	CMW20024X30	24	MXT30	3	7/8	332
20	CMW20024X35	24	MXT35	3-1/2	7/8	305
20	CMW20024X40	24	MXT40	4	1	300
20	CMW20024X45	24	MXT45	4-1/2	1	290
20	CMW20026X25	26	MXT25	2-1/2	3/4	343
20	CMW20026X30	26	MXT30	3	7/8	356
20	CMW20026X35	26	MXT35	3-1/2	7/8	326
20	CMW20026X40	26	MXT40	4	1	325
20	CMW20026X45	26	MXT45	4-1/2	1	315
20	CMW20030X25	30	MXT25	2-1/2	3/4	389
20	CMW20030X30	30	MXT30	3	7/8	402
20	CMW20030X35	30	MXT35	3-1/2	7/8	368
20	CMW20030X40	30	MXT40	4	1	375
20	CMW20030X45	30	MXT45	4-1/2	1	365

Mine Duty Wing Pulley

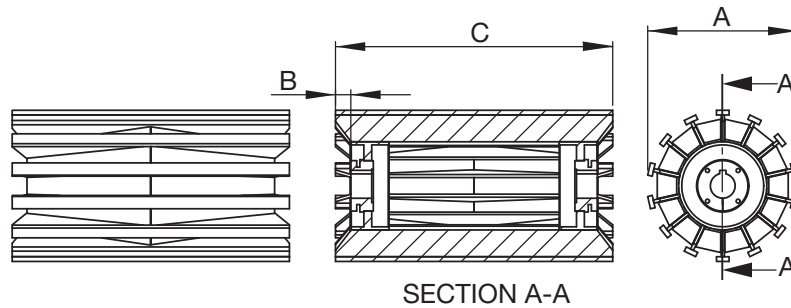
Diameter (A)	Part Number	Face (C)	Hub	Max Bore	Setback (B)*	Approx. Weight (lbs)
20	CMW20032X25	32	MXT25	2-1/2	3/4	412
20	CMW20032X30	32	MXT30	3	7/8	425
20	CMW20032X35	32	MXT35	3-1/2	7/8	389
20	CMW20032X40	32	MXT40	4	1	400
20	CMW20032X45	32	MXT45	4-1/2	1	390
20	CMW20036X25	36	MXT25	2-1/2	3/4	459
20	CMW20036X30	36	MXT30	3	7/8	472
20	CMW20036X35	36	MXT35	3-1/2	7/8	432
20	CMW20036X40	36	MXT40	4	1	450
20	CMW20036X45	36	MXT45	4-1/2	1	440
20	CMW20038X25	38	MXT25	2-1/2	3/4	482
20	CMW20038X30	38	MXT30	3	7/8	495
20	CMW20038X35	38	MXT35	3-1/2	7/8	453
20	CMW20038X40	38	MXT40	4	1	475
20	CMW20038X45	38	MXT45	4-1/2	1	465
20	CMW20040X25	40	MXT25	2-1/2	3/4	505
20	CMW20040X30	40	MXT30	3	7/8	518
20	CMW20040X35	40	MXT35	3-1/2	7/8	474
20	CMW20040X40	40	MXT40	4	1	500
20	CMW20040X45	40	MXT45	4-1/2	1	490
20	CMW20044X25	44	MXT25	2-1/2	3/4	552
20	CMW20044X30	44	MXT30	3	7/8	565
20	CMW20044X35	44	MXT35	3-1/2	7/8	517
20	CMW20044X40	44	MXT40	4	1	551
20	CMW20044X45	44	MXT45	4-1/2	1	541
20	CMW20046X25	46	MXT25	2-1/2	3/4	575
20	CMW20046X30	46	MXT30	3	7/8	588
20	CMW20046X35	46	MXT35	3-1/2	7/8	538
20	CMW20046X40	46	MXT40	4	1	576
20	CMW20046X45	46	MXT45	4-1/2	1	566
20	CMW20051X25	51	MXT25	2-1/2	3/4	661
20	CMW20051X30	51	MXT30	3	7/8	674
20	CMW20051X35	51	MXT35	3-1/2	7/8	624
20	CMW20051X40	51	MXT40	4	1	650
20	CMW20051X45	51	MXT45	4-1/2	1	641
20	CMW20054X25	54	MXT25	2-1/2	3/4	695
20	CMW20054X30	54	MXT30	3	7/8	709
20	CMW20054X35	54	MXT35	3-1/2	7/8	655
20	CMW20054X40	54	MXT40	4	1	688
20	CMW20054X45	54	MXT45	4-1/2	1	678
20	CMW20057X25	57	MXT25	2-1/2	3/4	730
20	CMW20057X30	57	MXT30	3	7/8	754
20	CMW20057X35	57	MXT35	3-1/2	7/8	687
20	CMW20057X40	57	MXT40	4	1	726
20	CMW20057X45	57	MXT45	4-1/2	1	716
20	CMW20060X25	60	MXT25	2-1/2	3/4	765
20	CMW20060X30	60	MXT30	3	7/8	779
20	CMW20060X35	60	MXT35	3-1/2	7/8	719
20	CMW20060X40	60	MXT40	4	1	764
20	CMW20060X45	60	MXT45	4-1/2	1	754
20	CMW20063X25	63	MXT25	2-1/2	3/4	828
20	CMW20063X30	63	MXT30	3	7/8	841
20	CMW20063X35	63	MXT35	3-1/2	7/8	784

* General position for bushing face - for position per application consult *Martin*.

BOLD TYPE INDICATES PRODUCT CARRIED IN STOCK. Other sizes are available for quick delivery from nearest *Martin* facility.

Wing Pulleys — Mine Duty

Martin



Mine Duty Wing Pulley

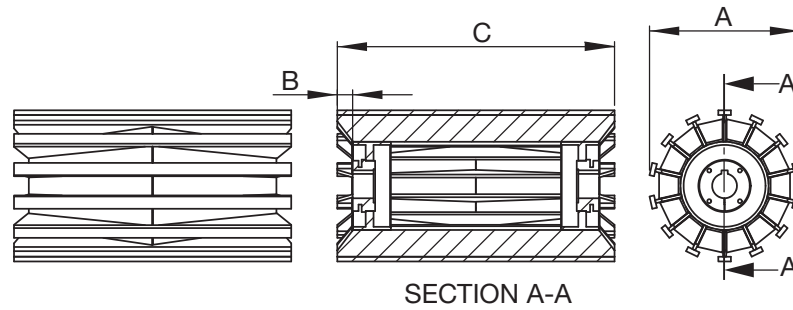
Diameter (A)	Part Number	Face (C)	Hub	Max Bore	Setback (B)*	Approx. Weight (lbs)
20	CMW20063X40	63	MXT40	4	1	813
20	CMW20063X45	63	MXT45	4-1/2	1	804
20	CMW20066X25	66	MXT25	2-1/2	3/4	863
20	CMW20066X30	66	MXT30	3	7/8	876
20	CMW20066X35	66	MXT35	3-1/2	7/8	815
20	CMW20066X40	66	MXT40	4	1	851
20	CMW20066X45	66	MXT45	4-1/2	1	841
24	CMW24012X25	12	MXT25	2-1/2	3/4	235
24	CMW24012X30	12	MXT30	3	7/8	229
24	CMW24012X35	12	MXT35	3-1/2	7/8	209
24	CMW24012X40	12	MXT40	4	1	190
24	CMW24012X45	12	MXT45	4-1/2	1	176
24	CMW24014X25	14	MXT25	2-1/2	3/4	219
24	CMW24014X30	14	MXT30	3	7/8	268
24	CMW24014X35	14	MXT35	3-1/2	7/8	248
24	CMW24014X40	14	MXT40	4	1	226
24	CMW24014X45	14	MXT45	4-1/2	1	212
24	CMW24016X25	16	MXT25	2-1/2	3/4	259
24	CMW24016X30	16	MXT30	3	7/8	308
24	CMW24016X35	16	MXT35	3-1/2	7/8	288
24	CMW24016X40	16	MXT40	4	1	263
24	CMW24016X45	16	MXT45	4-1/2	1	249
24	CMW24016X50	16	MXT50	5	1	305
24	CMW24018X25	18	MXT25	2-1/2	3/4	323
24	CMW24018X30	18	MXT30	3	7/8	335
24	CMW24018X35	18	MXT35	3-1/2	7/8	315
24	CMW24018X40	18	MXT40	4	1	301
24	CMW24018X45	18	MXT45	4-1/2	1	286
24	CMW24018X50	18	MXT50	5	1	345
24	CMW24020X25	20	MXT25	2-1/2	3/4	353
24	CMW24020X30	20	MXT30	3	7/8	365
24	CMW24020X35	20	MXT35	3-1/2	7/8	343
24	CMW24020X40	20	MXT40	4	1	339
24	CMW24020X45	20	MXT45	4-1/2	1	324
24	CMW24020X50	20	MXT50	5	1	385
24	CMW24022X25	22	MXT25	2-1/2	3/4	383
24	CMW24022X30	22	MXT30	3	7/8	395
24	CMW24022X35	22	MXT35	3-1/2	7/8	373
24	CMW24022X40	22	MXT40	4	1	357
24	CMW24022X45	22	MXT45	4-1/2	1	362

Mine Duty Wing Pulley

Diameter (A)	Part Number	Face (C)	Hub	Max Bore	Setback (B)*	Approx. Weight (lbs)
24	CMW24022X50	22	MXT50	5	1	426
24	CMW24024X25	24	MXT25	2-1/2	3/4	413
24	CMW24024X30	24	MXT30	3	7/8	425
24	CMW24024X35	24	MXT35	3-1/2	7/8	403
24	CMW24024X40	24	MXT40	4	1	387
24	CMW24024X45	24	MXT45	4-1/2	1	380
24	CMW24024X50	24	MXT50	5	1	467
24	CMW24026X25	26	MXT25	2-1/2	3/4	443
24	CMW24026X30	26	MXT30	3	7/8	455
24	CMW24026X35	26	MXT35	3-1/2	7/8	433
24	CMW24026X40	26	MXT40	4	1	417
24	CMW24026X45	26	MXT45	4-1/2	1	409
24	CMW24026X50	26	MXT50	5	1	477
24	CMW24030X25	30	MXT25	2-1/2	3/4	504
24	CMW24030X30	30	MXT30	3	7/8	515
24	CMW24030X35	30	MXT35	3-1/2	7/8	493
24	CMW24030X40	30	MXT40	4	1	476
24	CMW24030X45	30	MXT45	4-1/2	1	469
24	CMW24030X50	30	MXT50	5	1	537
24	CMW24032X25	32	MXT25	2-1/2	3/4	534
24	CMW24032X30	32	MXT30	3	7/8	546
24	CMW24032X35	32	MXT35	3-1/2	7/8	524
24	CMW24032X40	32	MXT40	4	1	506
24	CMW24032X45	32	MXT45	4-1/2	1	499
24	CMW24032X50	32	MXT50	5	1	567
24	CMW24032X60	32	MXT60	6	1-1/8	543
24	CMW24036X25	36	MXT25	2-1/2	3/4	595
24	CMW24036X30	36	MXT30	3	7/8	606
24	CMW24036X35	36	MXT35	3-1/2	7/8	584
24	CMW24036X40	36	MXT40	4	1	566
24	CMW24036X45	36	MXT45	4-1/2	1	559
24	CMW24036X50	36	MXT50	5	1	628
24	CMW24038X25	38	MXT25	2-1/2	3/4	625
24	CMW24038X30	38	MXT30	3	7/8	637
24	CMW24038X35	38	MXT35	3-1/2	7/8	615
24	CMW24038X40	38	MXT40	4	1	596
24	CMW24038X45	38	MXT45	4-1/2	1	589
24	CMW24038X50	38	MXT50	5	1	658
24	CMW24038X60	38	MXT60	6	1-1/8	633
24	CMW24040X25	40	MXT25	2-1/2	3/4	656

* General position for bushing face - for position per application consult *Martin*.

BOLD TYPE INDICATES PRODUCT CARRIED IN STOCK. Other sizes are available for quick delivery from nearest *Martin* facility.



Mine Duty Wing Pulley

Diameter (A)	Part Number	Face (C)	Hub	Max Bore	Setback (B)*	Approx. Weight (lbs)
24	CMW24040X30	40	MXT30	3	7/8	667
24	CMW24040X35	40	MXT35	3-1/2	7/8	645
24	CMW24040X40	40	MXT40	4	1	626
24	CMW24040X45	40	MXT45	4-1/2	1	619
24	CMW24040X50	40	MXT50	5	1	688
24	CMW24044X25	44	MXT25	2-1/2	3/4	716
24	CMW24044X30	44	MXT30	3	7/8	728
24	CMW24044X35	44	MXT35	3-1/2	7/8	706
24	CMW24044X40	44	MXT40	4	1	687
24	CMW24044X45	44	MXT45	4-1/2	1	679
24	CMW24044X50	44	MXT50	5	1	749
24	CMW24044X60	44	MXT60	6	1-1/8	723
24	CMW24046X25	46	MXT25	2-1/2	3/4	747
24	CMW24046X30	46	MXT30	3	7/8	758
24	CMW24046X35	46	MXT35	3-1/2	7/8	736
24	CMW24046X40	46	MXT40	4	1	717

Mine Duty Wing Pulley

Diameter (A)	Part Number	Face (C)	Hub	Max Bore	Setback (B)*	Approx. Weight (lbs)
24	CMW24046X45	46	MXT45	4-1/2	1	709
24	CMW24051X25	51	MXT25	2-1/2	3/4	856
24	CMW24051X30	51	MXT30	3	7/8	867
24	CMW24051X35	51	MXT35	3-1/2	7/8	845
24	CMW24051X45	51	MXT45	4-1/2	1	811
24	CMW24051X60	51	MXT60	6	1-1/8	872
24	CMW24054X25	54	MXT25	2-1/2	3/4	901
24	CMW24054X30	54	MXT30	3	7/8	913
24	CMW24054X35	54	MXT35	3-1/2	7/8	891
24	CMW24054X40	54	MXT40	4	1	869
24	CMW24054X45	54	MXT45	4-1/2	1	856
24	CMW24054X50	54	MXT50	5	1	933
24	CMW24054X60	54	MXT60	6	1-1/8	918
24	CMW24057X25	57	MXT25	2-1/2	3/4	947

* General position for bushing face - for position per application consult *Martin*.

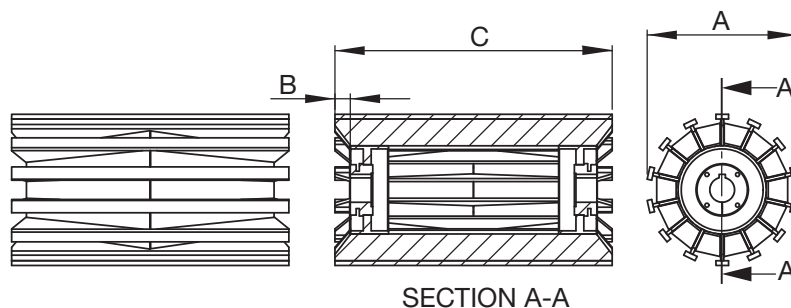
BOLD TYPE INDICATES PRODUCT CARRIED IN STOCK. Other sizes are available for quick delivery from nearest *Martin* facility.



Custom Shafting Available! Call *Martin*

Wing Pulleys — Mine Duty – M-HE Bushed

Martin



Mine Duty Wing Pulley — M-HE Bushed

Diameter (A)	Part Number	Face (C)	Hub	Max Bore	Setback (B)*	Approx. Weight (lbs)
16	CMW16044H25	44	M-HE25	2-1/2	3/4	432
16	CMW16051H25	51	M-HE25	2-1/2	3/4	506
18	CMW18038H25	38	M-HE25	2-1/2	3/4	427
18	CMW18044H25	44	M-HE25	2-1/2	3/4	493
18	CMW18051H25	51	M-HE25	2-1/2	3/4	583
18	CMW18054H25	54	M-HE25	2-1/2	3/4	616
18	CMW18054H30	54	M-HE30	3	7/8	660
18	CMW18063H25	63	M-HE25	2-1/2	3/4	728
18	CMW18063H30	63	M-HE30	3	7/8	777
20	CMW20026H30	26	M-HE30	3	7/8	323
20	CMW20026H35	26	M-HE35	3-1/2	7/8	320
20	CMW20026H40	26	M-HE40	4	1	336
20	CMW20026H45	26	M-HE45	4-1/2	1	343
20	CMW20032H35	32	M-HE35	3-1/2	7/8	389
20	CMW20032H45	32	M-HE45	4-1/2	1	418
20	CMW20038H35	38	M-HE35	3-1/2	7/8	458
20	CMW20038H45	38	M-HE45	4-1/2	1	494
20	CMW20044H25	44	M-HE25	2-1/2	3/4	555
20	CMW20044H30	44	M-HE30	3	7/8	530
20	CMW20051H25	51	M-HE25	2-1/2	3/4	655
20	CMW20051H30	51	M-HE30	3	7/8	628
20	CMW20051H40	51	M-HE40	4	1	662
20	CMW20054H25	54	M-HE25	2-1/2	3/4	692
20	CMW20054H30	54	M-HE30	3	7/8	663
20	CMW20054H35	54	M-HE35	3-1/2	7/8	660
20	CMW20054H40	54	M-HE40	4	1	700
20	CMW20054H45	54	M-HE45	4-1/2	1	707
20	CMW20057H35	57	M-HE35	3-1/2	7/8	695
20	CMW20057H40	57	M-HE40	4	1	738
20	CMW20063H25	63	M-HE25	2-1/2	3/4	818
20	CMW20063H30	63	M-HE30	3	7/8	784
20	CMW20063H35	63	M-HE35	3-1/2	7/8	782
20	CMW20063H40	63	M-HE40	4	1	825
20	CMW20063H45	63	M-HE45	4-1/2	1	833
24	CMW24032H40	32	M-HE40	4	1	521
24	CMW24032H50	32	M-HE50	5	1	539
24	CMW24032H60	32	M-HE60	6	1-1/8	542
24	CMW24038H50	38	M-HE50	5	1	629
24	CMW24038H60	38	M-HE60	6	1-1/8	634
24	CMW24044H45	44	M-HE45	4-1/2	1	708
24	CMW24044H50	44	M-HE50	5	1	719
24	CMW24044H60	44	M-HE60	6	1-1/8	722
24	CMW24051H30	51	M-HE30	3	7/8	861
24	CMW24051H45	51	M-HE45	4-1/2	1	840
24	CMW24051H60	51	M-HE60	6	1-1/8	872
24	CMW24054H30	54	M-HE30	3	7/8	926
24	CMW24054H35	54	M-HE35	3-1/2	7/8	923
24	CMW24054H40	54	M-HE40	4	1	893
24	CMW24054H45	54	M-HE45	4-1/2	1	901
24	CMW24054H50	54	M-HE50	5	1	912
24	CMW24054H60	54	M-HE60	6	1-1/8	917
24	CMW24057H60	57	M-HE60	6	1-1/8	962
24	CMW24063H30	63	M-HE30	3	7/8	1075

Mine Duty Wing Pulley — M-HE Bushed

Diameter (A)	Part Number	Face (C)	Hub	Max Bore	Setback (B)*	Approx. Weight (lbs)
24	CMW24063H35	63	M-HE35	3-1/2	7/8	11072
24	CMW24063H45	63	M-HE45	4-1/2	1	1048
24	CMW24063H50	63	M-HE50	5	1	1059
24	CMW24063H60	63	M-HE60	6	1-1/8	1097
30	CMW30038H30	38	M-HE30	3	7/8	789
30	CMW30038H35	38	M-HE35	3-1/2	7/8	486
30	CMW30038H40	38	M-HE40	4	1	793
30	CMW30038H45	38	M-HE45	4-1/2	1	800
30	CMW30038H50	38	M-HE50	5	1	810
30	CMW30038H60	38	M-HE60	6	1-1/8	782
30	CMW30044H30	44	M-HE30	3	7/8	905
30	CMW30044H35	44	M-HE35	3-1/2	7/8	901
30	CMW30044H50	44	M-HE50	5	1	926
30	CMW30044H60	44	M-HE60	6	1-1/8	897
30	CMW30051H30	51	M-HE30	3	7/8	1084
30	CMW30051H35	51	M-HE35	3-1/2	7/8	1080
30	CMW30051H50	51	M-HE50	5	1	1104
30	CMW30051H60	51	M-HE60	6	1-1/8	1076
30	CMW30054H30	54	M-HE30	3	7/8	1142
30	CMW30054H35	54	M-HE35	3-1/2	7/8	1138
30	CMW30054H40	54	M-HE40	4	1	1145
30	CMW30054H45	54	M-HE45	4-1/2	1	1152
30	CMW30054H50	54	M-HE50	5	1	1162
30	CMW30054H60	54	M-HE60	6	1-1/8	1134
30	CMW30063H30	63	M-HE30	3	7/8	1360
30	CMW30063H35	63	M-HE35	3-1/2	7/8	1356
30	CMW30063H40	63	M-HE40	4	1	1363
30	CMW30063H45	63	M-HE45	4-1/2	1	1370
30	CMW30063H50	63	M-HE50	5	1	1380
30	CMW30063H60	63	M-HE60	6	1-1/8	1351
36	CMW36044H30	44	M-HE30	3	7/8	974
36	CMW36044H35	44	M-HE35	3-1/2	7/8	970
36	CMW36044H40	44	M-HE40	4	1	976
36	CMW36044H45	44	M-HE45	4-1/2	1	983
36	CMW36044H50	44	M-HE50	5	1	993
36	CMW36044H60	44	M-HE60	6	1-1/8	958
36	CMW36051H30	51	M-HE30	3	7/8	1157
36	CMW36051H35	51	M-HE35	3-1/2	7/8	1153
36	CMW36051H50	51	M-HE50	5	1	1175
36	CMW36051H60	51	M-HE60	6	1-1/8	1140
36	CMW36054H30	54	M-HE30	3	7/8	1222
36	CMW36054H35	54	M-HE35	3-1/2	7/8	1217
36	CMW36054H40	54	M-HE40	4	1	1224
36	CMW36054H45	54	M-HE45	4-1/2	1	1230
36	CMW36054H50	54	M-HE50	5	1	1240
36	CMW36054H60	54	M-HE60	6	1-1/8	1205
36	CMW36063H30	63	M-HE30	3	7/8	1448
36	CMW36063H35	63	M-HE35	3-1/2	7/8	1444
36	CMW36063H40	63	M-HE40	4	1	1450
36	CMW36063H45	63	M-HE45	4-1/2	1	1456
36	CMW36063H50	63	M-HE50	5	1	1467
36	CMW36063H60	63	M-HE60	6	1-1/8	1431

* General position for bushing face - for position per application consult *Martin*.

BOLD TYPE INDICATES PRODUCT CARRIED IN STOCK. Other sizes are available for quick delivery from nearest *Martin* facility.

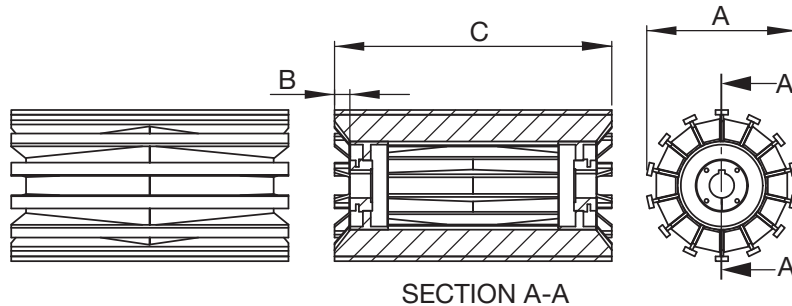
Quarry Duty Wing Pulleys



Martin's Quarry Duty Wing Pulleys are constructed from extremely heavy materials and are recognized in the industry as the most aggressive wing pulley in the business. All *Martin* wing pulleys utilize the unique 'end-pipe' design, which offers ultimate protection against wing folding and hub-weld fatigue. Our minimum 3/4" thick contact bar yields additional life in abrasive applications where our competitors thinner bar does not. Additionally, our 3/8" thick wing and 5/16" gussets offer higher structural support in aggressive applications.

All *Martin* Quarry Duty Wing Pulleys utilize full depth keyed bushings which offer maximum clamping force on the shaft and minimize "pulley walking." The Quarry Duty Wing Pulley has changed the industry and has spawned many 'knock-offs,' but none have been able to reproduce the original!

For the most aggressive applications, specify the best, specify the *Martin* Quarry Duty Wing Pulley!



FEATURES:

- Available in 10" thru 60" Diameter
- Minimum 3/4" x 2" Contact Bars
- Minimum 3/8" Thick Wings
- Minimum 5/16" Gussets
- Several Hub/Bushing Systems Available
- Features Unique *Martin* 'End Pipe' Design
 - Better Protection Against Wing Folding
 - Better Protection Against Hub-Weld Fatigue
- Features Full Depth Keyed Bushings for Higher Clamping to Shaft

Quarry Duty Wing Pulleys

Diameter (A)	Part Number	Face (C)	Hub	Max Bore	Setback (B)*	Approx. Weight (lbs)
12	CQW12026X35	26	MXT35	3-1/2	7/8	211
12	CQW12038X35	38	MXT35	3-1/2	7/8	307
14	CQW14026X25	26	MXT25	2-1/2	3/4	275
14	CQW14032X25	32	MXT25	2-1/2	3/4	330
14	CQW14038X25	38	MXT25	2-1/2	3/4	395
14	CQW14044X25	44	MXT25	2-1/2	3/4	459
14	CQW14051X25	51	MXT25	2-1/2	3/4	537
16	CQW16026X25	26	MXT25	2-1/2	3/4	296
16	CQW16026X30	26	MXT30	3	7/8	293
16	CQW16026X35	26	MXT35	3-1/2	7/8	282
16	CQW16032X25	32	MXT25	2-1/2	3/4	367
16	CQW16032X30	32	MXT30	3	7/8	360
16	CQW16032X35	32	MXT35	3-1/2	7/8	350
16	CQW16038X25	38	MXT25	2-1/2	3/4	440
16	CQW16038X30	38	MXT30	3	7/8	428
16	CQW16038X35	38	MXT35	3-1/2	7/8	417
16	CQW16044X25	44	MXT25	2-1/2	3/4	513
16	CQW16044X30	44	MXT30	3	7/8	495
16	CQW16044X35	44	MXT35	3-1/2	7/8	484
16	CQW16044X40	44	MXT40	4	1	473
16	CQW16051X25	51	MXT25	2-1/2	3/4	600
16	CQW16051X30	51	MXT30	3	7/8	581
16	CQW16051X35	51	MXT35	3-1/2	7/8	570
16	CQW16051X45	51	MXT45	4-1/2	1	551
18	CQW18026X25	26	MXT25	2-1/2	3/4	378
18	CQW18026X30	26	MXT30	3	7/8	369
18	CQW18026X35	26	MXT35	3-1/2	7/8	355
18	CQW18026X40	26	MXT40	4	1	352
18	CQW18032X25	32	MXT25	2-1/2	3/4	471
18	CQW18032X30	32	MXT30	3	7/8	456
18	CQW18032X35	32	MXT35	3-1/2	7/8	442
18	CQW18032X40	32	MXT40	4	1	433
18	CQW18038X25	38	MXT25	2-1/2	3/4	569
18	CQW18038X30	38	MXT30	3	7/8	543
18	CQW18038X35	38	MXT35	3-1/2	7/8	529
18	CQW18038X40	38	MXT40	4	1	514

Quarry Duty Wing Pulleys

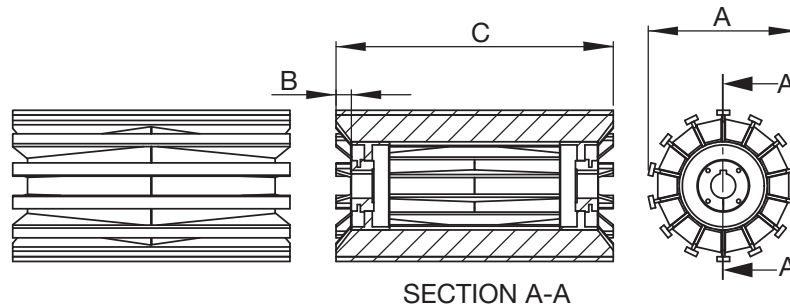
Diameter (A)	Part Number	Face (C)	Hub	Max Bore	Setback (B)*	Approx. Weight (lbs)
18	CQW18044X25	44	MXT25	2-1/2	3/4	657
18	CQW18044X30	44	MXT30	3	7/8	630
18	CQW18044X35	44	MXT35	3-1/2	7/8	616
18	CQW18044X40	44	MXT40	4	1	595
18	CQW18051X25	51	MXT25	2-1/2	3/4	769
18	CQW18051X30	51	MXT30	3	7/8	738
18	CQW18051X35	51	MXT35	3-1/2	7/8	724
18	CQW18051X40	51	MXT40	4	1	701
18	CQW18051X45	51	MXT45	3-1/2	7/8	692
18	CQW18051X50	51	MXT50	3-1/2	7/8	705
18	CQW18063X25	63	MXT25	2-1/2	3/4	959
18	CQW18063X30	63	MXT30	3	7/8	920
18	CQW18063X35	63	MXT35	3-1/2	7/8	905
18	CQW18063X40	63	MXT40	4	1	874
20	CQW20026X30	26	MXT30	3	7/8	404
20	CQW20026X35	26	MXT35	3-1/2	7/8	389
20	CQW20026X40	26	MXT40	4	1	384
20	CQW20026X45	26	MXT45	4-1/2	1	374
20	CQW20032X30	32	MXT30	3	7/8	500
20	CQW20032X35	32	MXT35	3-1/2	7/8	484
20	CQW20032X40	32	MXT40	4	1	473
20	CQW20032X45	32	MXT45	4-1/2	1	463
20	CQW20038X30	38	MXT30	3	7/8	596
20	CQW20038X35	38	MXT35	3-1/2	7/8	580
20	CQW20038X40	38	MXT40	4	1	563
20	CQW20038X45	38	MXT45	4-1/2	1	553
20	CQW20044X30	44	MXT30	3	7/8	692
20	CQW20044X35	44	MXT35	3-1/2	7/8	676
20	CQW20044X40	44	MXT40	4	1	653
20	CQW20044X45	44	MXT45	4-1/2	1	643
20	CQW20051X30	51	MXT30	3	7/8	811
20	CQW20051X35	51	MXT35	3-1/2	7/8	795
20	CQW20051X40	51	MXT40	4	1	770
20	CQW20051X45	51	MXT45	4-1/2	1	760
20	CQW20063X30	63	MXT30	3	7/8	1011

* General position for bushing face - for position per application consult *Martin*.

BOLD TYPE INDICATES PRODUCT CARRIED IN STOCK. Other sizes are available for quick delivery from nearest *Martin* facility.

Wing Pulleys — Quarry Duty

Martin



Quarry Duty Wing Pulley

Diameter (A)	Part Number	Face (C)	Hub	Max Bore	Setback (B)*	Approx. Weight (lbs)
20	CQW20063X35	63	MXT35	3-1/2	7/8	994
20	CQW20063X40	63	MXT40	4	1	962
20	CQW20063X45	63	MXT45	4-1/2	1	952
24	CQW24032X30	32	MXT30	3	7/8	638
24	CQW24032X35	32	MXT35	3-1/2	7/8	614
24	CQW24032X40	32	MXT40	4	1	596
24	CQW24032X45	32	MXT45	4-1/2	1	587
24	CQW24032X50	32	MXT50	5	1	659
24	CQW24032X60	32	MXT60	6	1-1/8	630
24	CQW24038X30	38	MXT30	3	7/8	746
24	CQW24038X35	38	MXT35	3-1/2	7/8	723
24	CQW24038X40	38	MXT40	4	1	703
24	CQW24038X45	38	MXT45	4-1/2	1	695
24	CQW24038X50	38	MXT50	5	1	767
24	CQW24038X60	38	MXT60	6	1-1/8	736
24	CQW24044X30	44	MXT30	3	7/8	855
24	CQW24044X35	44	MXT35	3-1/2	7/8	831
24	CQW24044X40	44	MXT40	4	1	811
24	CQW24044X45	44	MXT45	4-1/2	1	803
24	CQW24044X50	44	MXT50	5	1	875
24	CQW24044X60	44	MXT60	6	1-1/8	845
24	CQW24051X30	51	MXT30	3	7/8	1015
24	CQW24051X35	51	MXT35	3-1/2	7/8	991
24	CQW24051X40	51	MXT40	4	1	964
24	CQW24051X45	51	MXT45	4-1/2	1	956
24	CQW24051X50	51	MXT50	5	1	1035
24	CQW24051X60	51	MXT60	6	1-1/8	1015
24	CQW24057X50	57	MXT50	5	1	1144
24	CQW24063X30	63	MXT30	3	7/8	1266
24	CQW24063X35	63	MXT35	3-1/2	7/8	1242
24	CQW24063X40	63	MXT40	4	1	1207
24	CQW24063X45	63	MXT45	4-1/2	1	1199
24	CQW24063X50	63	MXT50	5	1	1285
24	CQW24063X60	63	MXT60	6	1-1/8	1275
30	CQW30038X35	38	MXT35	3-1/2	7/8	896

Quarry Duty Wing Pulley

Diameter (A)	Part Number	Face (C)	Hub	Max Bore	Setback (B)*	Approx. Weight (lbs)
30	CQW30038X40	38	MXT40	4	1	901
30	CQW30038X45	38	MXT45	4-1/2	1	890
30	CQW30038X50	38	MXT50	5	1	898
30	CQW30038X60	38	MXT60	6	1-1/8	908
30	CQW30044X35	44	MXT35	3-1/2	7/8	1033
30	CQW30044X40	44	MXT40	4	1	1037
30	CQW30044X45	44	MXT45	4-1/2	1	1027
30	CQW30044X50	44	MXT50	5	1	1034
30	CQW30044X60	44	MXT60	6	1-1/8	1044
30	CQW30051X35	51	MXT35	3-1/2	7/8	1236
30	CQW30051X40	51	MXT40	4	1	1241
30	CQW30051X45	51	MXT45	4-1/2	1	1230
30	CQW30051X50	51	MXT50	5	1	1238
30	CQW30051X60	51	MXT60	6	1-1/8	1247
30	CQW30063X35	63	MXT35	3-1/2	7/8	1554
30	CQW30063X40	63	MXT40	4	1	1559
30	CQW30063X45	63	MXT45	4-1/2	1	1548
30	CQW30063X50	63	MXT50	5	1	1556
30	CQW30063X60	63	MXT60	6	1-1/8	1565
30	CQW36044X35	44	MXT35	3-1/2	7/8	1033
36	CQW36044X40	44	MXT40	4	1	1129
36	CQW36044X45	44	MXT45	4-1/2	1	1116
36	CQW36044X50	44	MXT50	5	1	1123
36	CQW36044X60	44	MXT60	6	1-1/8	1130
36	CQW36051X35	51	MXT35	3-1/2	7/8	1236
36	CQW36051X40	51	MXT40	4	1	1341
36	CQW36051X45	51	MXT45	4-1/2	1	1328
36	CQW36051X50	51	MXT50	5	1	1335
36	CQW36051X60	51	MXT60	6	1-1/8	1342
36	CQW36063X35	63	MXT35	3-1/2	7/8	1679
36	CQW36063X40	63	MXT40	4	1	1682
36	CQW36063X45	63	MXT45	4-1/2	1	1669
36	CQW36063X50	63	MXT50	5	1	1676
36	CQW36063X60	63	MXT60	6	1-1/8	1683

* General position for bushing face - for position per application consult *Martin*.

BOLD TYPE INDICATES PRODUCT CARRIED IN STOCK. Other sizes are available for quick delivery from nearest *Martin* facility.



Custom Shafting Available! Call *Martin*

Quarry Duty "AR" Wing Pulleys



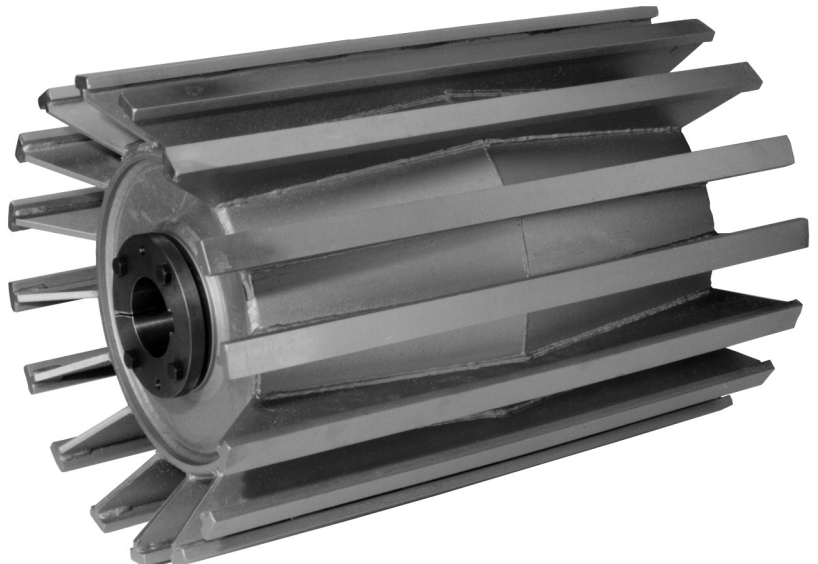
Martin Quarry Duty "AR" (abrasive resistant) Wing Pulleys are constructed with AR400 3/4" x 2" heavy contact bars and are recognized in the industry as a true problem solving pulley. All *Martin* Quarry Duty "AR" Wing Pulleys utilize the unique 'end-pipe' design, which offers ultimate protection against wing folding and hub-weld fatigue. Our 3/4" AR400 contact bar yields maximum life in super abrasive applications where our competitors thinner A36 mild steel bar does not. Additionally, our 1/2" thick wing and 5/16" gussets offer higher structural support in aggressive applications.

All *Martin* Quarry Duty "AR" Wing Pulleys utilize full depth keyed bushings which offer maximum clamping force on the shaft and minimize "pulley walking." The Quarry Duty "AR" wing pulley has changed the industry and solved the problem of premature bar wear plaguing users in some of the most aggressive applications.



FEATURES:

- Available in 10" thru 60" Diameter
- Minimum 3/4" x 2" Contact Bars "AR400" Abrasive Resistant Steel
- Minimum 1/2" Thick Wings
- Minimum 5/16" Gussets
- Features Unique *Martin* 'End Pipe' Design
 - Better Protection Against Wing Folding
 - Better Protection Against Hub-Weld Fatigue
- Features Full Depth Keyed Bushings for Higher Clamping to Shaft
- Several Hub/Bushing Systems Available



Call *Martin* for fast turn around times on Made-to-Order Quarry Duty "AR" Pulleys!