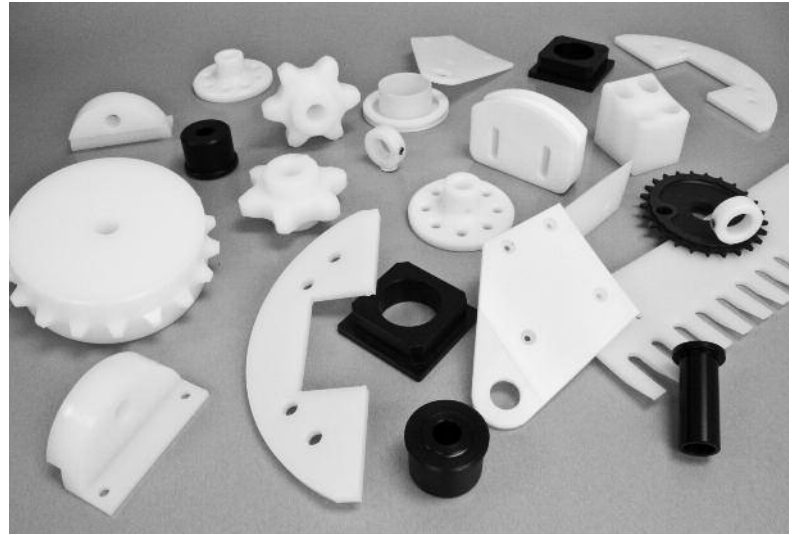


PLASTICS

PRODUCT	PAGE
INDEX.....	L-1
PLASTIC CAPABILITIES.....	L-2
SECTION I — NON-METALLIC SPROCKETS.....	L-3 - L-12
Sprockets - Stock	
No. 25 — 1/4" Pitch	L-3
No. 35 — 3/8" Pitch	L-4
No. 40 — 1/2" Pitch	L-5
No. 50 — 5/8" Pitch	L-6
No. 60 — 3/4" Pitch	L-7
No. 80 — 1" Pitch	L-8
No. 100 — 1-1/4" Pitch	L-9
No. 78 Series Non-Metallic Split Sprockets	L-10
Material Characteristics	L-11
SECTION II — NATURAL NYLON GEARS.....	L-12 - L-21
Gears - Stock — 14-1/2° Pressure Angle	
4DP — 2" Face.....	L-13
5DP — 1-3/4" Face.....	L-14
6DP — 1-1/2" Face.....	L-15
8DP — 1-1/4" Face.....	L-16
10DP — 1" Face.....	L-17
12DP — 3/4" Face.....	L-18
16DP — 1/2" Face.....	L-19
20DP — 3/8" Face	L-20
Gear Racks — 14-1/2° Pressure Angle	L-21
Gear Racks — 20° Pressure Angle	L-21
SECTION III — SPECIALTY ITEMS.....	L-22 - L-24
Waste Water Treatment Products.....	L-23 - L-24



Injection molded plastic products can be manufactured in a wide variety of sizes and shapes.



Custom plastic products may be made using materials such as UHMW, Nylon, & Acetal.

Martin's Plastic Capabilities

At *Martin* we believe that continuous assessment, understanding, improvement and innovation of our product line is essential to providing for the ever-evolving needs of our customer base. In 1988, we saw the growing demand for molded plastics in our industry and added our injection mold facility in Paragould, Arkansas.

This facility has been continually updated and is still recognized as one of the largest state-of-the-art facilities in the Southwest. Here we have the capacity and capabilities to produce custom products in a variety of sizes and shapes using a vast array of plastic compounds.

With fuel costs at an all time high, competition from foreign sources, and manufacturing diligently working on ways to cut costs and improve their bottom line, more and more industries are looking to plastics or plastic compounds to reduce weight, improve wear in hostile environments, and reduce overall costs. *Martin* understands this need and now is able to offer machined plastic roller chain sprockets, engineered sprockets and rack and spur gears. *Martin* stocks a wide selection of these products and also has the ability to quickly custom manufacture to your specifications.

Capabilities within our core machined plastic product line includes: Gear Rack up to 120" long 4" thick in 14-1/2° and 20° pressure angles; Spur Gear

from 1" to 24" diameter, 14-1/2° pressure angles; Roller Chain Sprockets 25 to 120 Series, less than 1" diameter to more than 58" diameter; as well as Mill Sprockets (Engineering Class) in 78, 82 and 720 Series. Common materials of construction include UHMW, Nylon and Acetal.

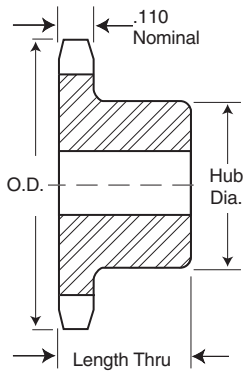
We offer many secondary operations such as side holes, tapped holes, o-ring grooves, milled threads, etc. Other variations of specialty manufacturing might include two-color and inserts.

Custom products made to your exact specifications require precision equipment, quality workmanship, expedient delivery, and strict quality procedures. These are the foundation of *Martin* Sprocket and Gear. We work to ensure that your job is done right every time and ready to ship when you need it.

We live up to our reputation for speed, dependability, and quality.

The addition of machined plastics capabilities, coupled with nearly 60 years experience in steel product manufacturing, allows *Martin* to offer a complete line of both stock and custom products in steel, iron and plastics, as well as the ability to manufacture hybrid products using the three different technologies all under one roof.

Our Roller Chain Sprockets are machined from solid plates of material, resulting in a sprocket that you can count on to get the job done.



TYPE B

Single-Type B

No. Teeth	Catalog Number	Outside Diameter	Type	Bore (inches)		Hub (inches)		Weight Lbs. (Approx.)
				Stock	Rec. Max.	Diameter	Length Thru	
9	25B9NM	.837	B	1/4	1/4	7/16	1/2	0.01
10	25B10NM	.919	B	1/4	1/4	1/2	1/2	0.01
11	25B11NM	1.001	B	1/4	5/16	9/16	1/2	0.01
12	25B12NM	1.083	B	1/4	3/8	5/8	1/2	0.01
13	25B13NM	1.164	B	1/4	3/8	23/32	1/2	0.01
14	25B14NM	1.245	B	1/4	7/16	13/16	1/2	0.01
15	25B15NM	1.326	B	1/4	7/16	57/64	1/2	0.01
16	25B16NM	1.407	B	1/4	7/16	31/32	1/2	0.02
17	25B17NM	1.487	B	1/4	7/16	1-1/32	1/2	0.02
18	25B18NM	1.568	B	1/4	1/2	1-1/8	1/2	0.02
19	25B19NM	1.648	B	1/4	9/16	1-7/32	1/2	0.02
20	25B20NM	1.728	B	1/4	9/16	1-9/32	5/8	0.02
21	25B21NM	1.809	B	1/4	5/8	1-3/8	5/8	0.02
22	25B22NM	1.889	B	1/4	3/4	1-7/16	5/8	0.03
23	25B23NM	1.969	B	1/4	13/16	1-1/2	5/8	0.05
24	25B24NM	2.049	B	3/8	13/16	1-1/2	5/8	0.05
25	25B25NM	2.129	B	3/8	13/16	1-1/2	5/8	0.05
26	25B26NM	2.209	B	3/8	13/16	1-1/2	5/8	0.05
28	25B28NM	2.369	B	3/8	13/16	1-1/2	5/8	0.05
30	25B30NM	2.529	B	3/8	13/16	1-1/2	5/8	0.06
32	25B32NM	2.688	B	3/8	13/16	1-1/2	5/8	0.06
35	25B35NM	2.928	B	3/8	13/16	1-1/2	5/8	0.06
36	25B36NM	3.008	B	3/8	13/16	1-1/2	3/4	0.07
40	25B40NM	3.327	B	1/2	1-1/8	2	3/4	0.12
42	25B42NM	3.486	B	1/2	1-1/8	2	3/4	0.12
48	25B48NM	3.964	B	1/2	1-1/8	2	3/4	0.13
54	25B54NM	4.442	B	1/2	1-1/8	2	3/4	0.15
60	25B60NM	4.920	B	1/2	1-1/8	2	3/4	0.16
70	25B70NM	5.717	B	1/2	1-1/8	2	3/4	0.19
72	25B72NM	5.876	B	1/2	1-1/8	2	3/4	0.20

Notes:

- Standard Material: Natural Nylon
- Other numbers of teeth and hub styles available
- Available as stock drilled bore, finished drive bore with keyway and setscrews, or idler bore

No. 35

3/8" Pitch

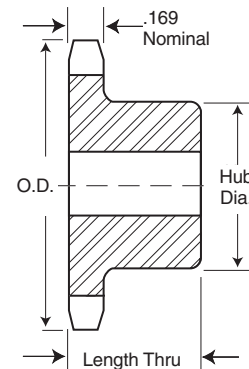
Plastic Sprockets

Martin

Single-Type B

No. Teeth	Catalog Number	Outside Diameter	Type	Bore (inches)		Hub (inches)		Weight Lbs. (Approx.)
				Stock	Rec. Max.	Diameter	Length Thru	
9	35B9NM	1.255	B	3/8	3/8	27/32	3/4	0.02
10	35B10NM	1.379	B	3/8	7/16	31/32	3/4	0.02
11	35B11NM	1.502	B	3/8	7/16	1-1/16	3/4	0.03
12	35B12NM	1.625	B	1/2	1/2	1-7/32	3/4	0.03
13	35B13NM	1.746	B	1/2	9/16	1-1/4	3/4	0.03
14	35B14NM	1.868	B	1/2	9/16	1-1/4	3/4	0.04
15	35B15NM	1.989	B	1/2	5/8	1-11/32	7/8	0.04
16	35B16NM	2.110	B	1/2	13/16	1-15/32	7/8	0.05
17	35B17NM	2.231	B	1/2	13/16	1-19/32	7/8	0.06
18	35B18NM	2.352	B	1/2	7/8	1-23/32	7/8	0.07
19	35B19NM	2.472	B	1/2	7/8	1-27/32	7/8	0.08
20	35B20NM	2.593	B	1/2	15/16	1-15/16	7/8	0.11
21	35B21NM	2.713	B	1/2	1-1/8	2	7/8	0.12
22	35B22NM	2.833	B	1/2	1-1/8	2	7/8	0.12
23	35B23NM	2.953	B	1/2	1-1/8	2	7/8	0.12
24	35B24NM	3.073	B	1/2	1-1/8	2	7/8	0.12
25	35B25NM	3.193	B	1/2	1-1/8	2	7/8	0.13
26	35B26NM	3.313	B	1/2	1-1/8	2	7/8	0.13
27	35B27NM	3.433	B	1/2	1-1/8	2	7/8	0.13
28	35B28NM	3.553	B	1/2	1-1/8	2	7/8	0.14
30	35B30NM	3.793	B	1/2	1-1/8	2	7/8	0.15
32	35B32NM	4.032	B	1/2	1-1/8	2	7/8	0.16
35	35B35NM	4.392	B	5/8	1-3/4	3-1/4	7/8	0.35
36	35B36NM	4.511	B	5/8	1-3/4	3-1/4	7/8	0.35
40	35B40NM	4.990	B	5/8	1-3/4	3-1/4	1	0.40
42	35B42NM	5.229	B	5/8	1-3/4	3-1/4	1	0.41
45	35B45NM	5.588	B	5/8	1-3/4	3-1/4	1	0.43
48	35B48NM	5.946	B	5/8	2-3/4	4-1/2	1	0.70
54	35B54NM	6.664	B	5/8	2-3/4	4-1/2	1	0.75
60	35B60NM	7.380	B	3/4	2-3/4	4-1/2	1	0.80
70	35B70NM	8.575	B	3/4	4-1/2	7	1	1.65
72	35B72NM	8.814	B	3/4	4-1/2	7	1	1.67
80	35B80NM	9.769	B	3/4	4-1/2	7	1	1.77
84	35B84NM	10.247	B	3/4	4-1/2	9	1	2.65
96	35B96NM	11.680	B	3/4	4-1/2	9	1	2.82
112	35B112NM	13.591	B	3/4	4-1/2	11	1	4.12

Our Roller Chain Sprockets are machined from solid plates of material, resulting in a sprocket that you can count on to get the job done.



TYPE B

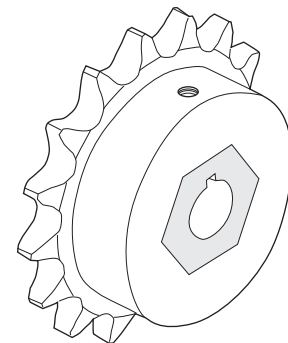
Notes:

- Standard Material: Natural Nylon
- Other numbers of teeth and hub styles available
- Available as stock drilled bore, finished drive bore with keyway and setscrews, or idler bore.

MSS™ Type B Sprocket with Stainless Steel Insert

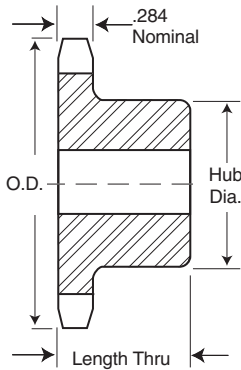
No. Teeth	Bore (in.) **	No. Teeth	Bore (in.) **
16	3/8, 1/2, 5/8	33	3/8, 5/8, 3/4, 7/8, 1, 1-1/4
17	3/8, 1/2, 5/8	34	3/8, 5/8, 3/4, 7/8, 1, 1-1/4
19	3/8, 1/2, 5/8	35	3/8, 5/8, 3/4, 7/8
20	3/8, 1/2, 5/8	36	3/8, 5/8, 3/4, 7/8
21	3/8, 1/2, 5/8, 3/4, 7/8	37	3/8, 5/8, 3/4, 7/8, 1, 1-1/4
22	3/8, 1/2, 5/8, 3/4, 7/8	38	3/8, 5/8, 3/4, 7/8, 1, 1-1/4
23	3/8, 1/2, 5/8, 3/4, 7/8	39	3/8, 5/8, 3/4, 7/8, 1, 1-1/4
24	3/8, 1/2, 5/8, 3/4, 7/8	40	3/8, 1/2, 5/8, 3/4, 7/8, 1
25	3/8, 1/2, 5/8, 3/4, 7/8	41	3/8, 5/8, 3/4, 7/8, 1, 1-1/4
26	3/8, 1/2, 5/8, 3/4, 7/8	42	3/8, 5/8, 3/4, 7/8, 1, 1-1/4
27	3/8, 1/2, 5/8, 3/4, 7/8	43	3/8, 5/8, 3/4, 7/8, 1, 1-1/4
28	3/8, 1/2, 5/8, 3/4, 7/8	44	3/8, 5/8, 3/4, 7/8, 1, 1-1/4
29	3/8, 1/2, 5/8, 3/4, 7/8	45	3/8, 1/2, 5/8, 3/4, 7/8, 1
30	3/8, 1/2, 5/8, 3/4, 7/8	46	3/8, 5/8, 3/4, 7/8, 1, 1-1/4
31	3/8, 1/2, 5/8, 3/4, 7/8	47	3/8, 5/8, 3/4, 7/8, 1, 1-1/4
32	3/8, 5/8, 3/4, 7/8, 1, 1-1/4	48	3/8, 5/8, 3/4, 7/8, 1, 1-1/4

**Includes Keyway & Setscrew



Single-Type B

Our Roller Chain Sprockets are machined from solid plates of material, resulting in a sprocket that you can count on to get the job done.



TYPE B

Notes:

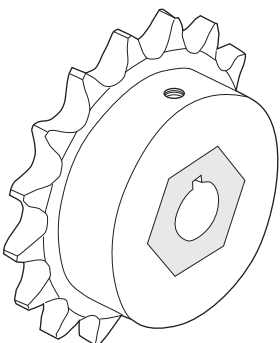
- Standard Material: Natural Nylon
- Other numbers of teeth and hub styles available
- Available as stock drilled bore, finished drive bore with keyway and setscrews, or idler bore

No. Teeth	Catalog Number	Outside Diameter	Type	Bore (inches)		Hub (inches)		Weight Libs. (Approx.)
				Stock	Rec. Max.	Diameter	Length Thru	
9	40B9NM	1.674	B	1/2	7/16	1-1/16	7/8	0.03
10	40B10NM	1.839	B	1/2	1/2	1-1/4	7/8	0.04
11	40B11NM	2.003	B	1/2	9/16	1-3/8	7/8	0.05
12	40B12NM	2.166	B	1/2	5/8	1-9/16	7/8	0.06
13	40B13NM	2.329	B	1/2	5/8	1-9/16	7/8	0.08
14	40B14NM	2.491	B	1/2	3/4	1-11/16	7/8	0.08
15	40B15NM	2.652	B	1/2	7/8	1-13/16	7/8	0.10
16	40B16NM	2.814	B	5/8	15/16	2	7/8	0.11
17	40B17NM	2.975	B	5/8	1-1/8	2-1/8	1	0.14
18	40B18NM	3.136	B	5/8	1-1/8	2-5/16	1	0.16
19	40B19NM	3.296	B	5/8	1-1/4	2-1/2	1	0.19
20	40B20NM	3.457	B	5/8	1-3/8	2-5/8	1	0.25
21	40B21NM	3.617	B	5/8	1-1/2	2-3/4	1	0.27
22	40B22NM	3.778	B	5/8	1-5/8	2-7/8	1	0.30
23	40B23NM	3.938	B	5/8	1-5/8	3	1	0.33
24	40B24NM	4.098	B	5/8	1-3/4	3-1/4	1	0.38
25	40B25NM	4.258	B	5/8	1-3/4	3-1/4	1	0.39
26	40B26NM	4.418	B	5/8	1-3/4	3-1/4	1	0.40
27	40B27NM	4.578	B	5/8	1-3/4	3-1/4	1	0.41
28	40B28NM	4.738	B	5/8	1-3/4	3-1/4	1	0.43
29	40B29NM	4.897	B	5/8	1-3/4	3-1/4	1	0.44
30	40B30NM	5.057	B	5/8	1-3/4	3-1/4	1	0.45
31	40B31NM	5.217	B	5/8	1-3/4	3-1/4	1	0.47
32	40B32NM	5.377	B	5/8	1-3/4	3-1/4	1	0.48
33	40B33NM	5.536	B	5/8	1-3/4	3-1/4	1	0.50
34	40B34NM	5.696	B	5/8	1-3/4	3-1/4	1	0.41
35	40B35NM	5.855	B	5/8	1-3/4	3-1/4	1	0.53
36	40B36NM	6.015	B	5/8	1-3/4	3-1/4	1	0.55
37	40B37NM	6.175	B	5/8	1-3/4	3-1/4	1	0.57
38	40B38NM	6.334	B	5/8	1-3/4	3-1/4	1	0.58
39	40B39NM	6.494	B	5/8	1-3/4	3-1/4	1	0.60
40	40B40NM	6.653	B	3/4	2	3-1/2	1-1/8	0.70
41	40B41NM	6.813	B	3/4	2	3-1/2	1-1/8	0.72
42	40B42NM	6.972	B	3/4	2	3-1/2	1-1/8	0.74
43	40B43NM	7.131	B	3/4	2	3-1/2	1-1/8	0.76
44	40B44NM	7.291	B	3/4	2	3-1/2	1-1/8	0.78
45	40B45NM	7.450	B	3/4	2	3-1/2	1-1/8	0.80
46	40B46NM	7.610	B	3/4	2	3-1/2	1-1/8	0.82
47	40B47NM	7.769	B	3/4	2	3-1/2	1-1/8	0.84
48	40B48NM	7.929	B	3/4	2	3-1/2	1-1/8	0.86
49	40B49NM	8.088	B	3/4	2	3-1/2	1-1/8	0.89
50	40B50NM	8.247	B	3/4	2	3-1/2	1-1/8	0.91
51	40B51NM	8.407	B	3/4	2	3-1/2	1-1/8	0.93
52	40B52NM	8.566	B	3/4	2	3-1/2	1-1/8	0.96
53	40B53NM	8.725	B	3/4	2	3-1/2	1-1/8	0.98
54	40B54NM	8.885	B	3/4	2	3-1/2	1-1/8	1.01
55	40B55NM	9.044	B	3/4	2-1/2	4	1-1/8	1.13
56	40B56NM	9.203	B	3/4	2-1/2	4	1-1/8	1.16
57	40B57NM	9.363	B	3/4	4-1/2	7	1-1/8	2.06
58	40B58NM	9.522	B	3/4	4-1/2	7	1-1/8	2.08
59	40B59NM	9.681	B	3/4	4-1/2	7	1-1/8	2.11
60	40B60NM	9.841	B	3/4	4-1/2	7	1-1/8	2.14
70	40B70NM	11.433	B	3/4	4-1/2	7	1-1/4	2.63
80	40B80NM	13.026	B	3/4	4-1/2	10	1-1/4	4.53
84	40B84NM	13.663	B	3/4	4-1/2	10	1-1/4	4.68
96	40B96NM	15.573	B	1	4-1/2	12	1-1/4	6.49

MSS™ Type B Sprocket with Stainless Steel Insert

No. Teeth	Bore (in.) **	No. Teeth	Bore (in.) **
16	3/8, 1/2, 5/8	33	3/8, 5/8, 3/4, 7/8, 1, 1-1/4
17	3/8, 1/2, 5/8	34	3/8, 5/8, 3/4, 7/8, 1, 1-1/4
19	3/8, 1/2, 5/8	35	3/8, 5/8, 3/4, 7/8
20	3/8, 1/2, 5/8	36	3/8, 5/8, 3/4, 7/8
21	3/8, 1/2, 5/8, 3/4, 7/8	37	3/8, 5/8, 3/4, 7/8, 1, 1-1/4
22	3/8, 1/2, 5/8, 3/4, 7/8	38	3/8, 5/8, 3/4, 7/8, 1, 1-1/4
23	3/8, 1/2, 5/8, 3/4, 7/8	39	3/8, 5/8, 3/4, 7/8, 1, 1-1/4
24	3/8, 1/2, 5/8, 3/4, 7/8	40	3/8, 1/2, 5/8, 3/4, 7/8, 1
25	3/8, 1/2, 5/8, 3/4, 7/8	41	3/8, 5/8, 3/4, 7/8, 1, 1-1/4
26	3/8, 1/2, 5/8, 3/4, 7/8	42	3/8, 5/8, 3/4, 7/8, 1, 1-1/4
27	3/8, 1/2, 5/8, 3/4, 7/8	43	3/8, 5/8, 3/4, 7/8, 1, 1-1/4
28	3/8, 1/2, 5/8, 3/4, 7/8	44	3/8, 5/8, 3/4, 7/8, 1, 1-1/4
29	3/8, 1/2, 5/8, 3/4, 7/8	45	3/8, 1/2, 5/8, 3/4, 7/8, 1
30	3/8, 1/2, 5/8, 3/4, 7/8	46	3/8, 5/8, 3/4, 7/8, 1, 1-1/4
31	3/8, 1/2, 5/8, 3/4, 7/8	47	3/8, 5/8, 3/4, 7/8, 1, 1-1/4
32	3/8, 5/8, 3/4, 7/8, 1, 1-1/4	48	3/8, 5/8, 3/4, 7/8, 1, 1-1/4

**Includes Keyway & Setscrew



No. 50 5/8" Pitch

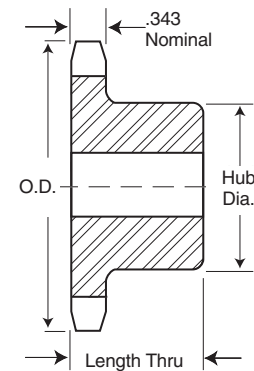
Plastic Sprockets

Martin

Single-Type B

No. Teeth	Catalog Number	Outside Diameter	Type	Bore (inches)		Hub (inches)		Weight Lbs. (Approx.)
				Stock	Rec. Max.	Diameter	Length Thru	
9	50B9NM	2.092	B	5/8	3/4	1-3/8	1	0.06
10	50B10NM	2.299	B	5/8	13/16	1-9/16	1	0.08
11	50B11NM	2.504	B	5/8	7/8	1-3/4	1	0.10
12	50B12NM	2.708	B	5/8	7/8	1-63/64	1	0.13
13	50B13NM	2.911	B	5/8	7/8	1-7/8	1	0.13
14	50B14NM	3.113	B	5/8	1-1/8	2-1/8	1	0.16
15	50B15NM	3.315	B	5/8	1-1/4	2-3/8	1	0.19
16	50B16NM	3.517	B	5/8	1-3/8	2-1/2	1	0.22
17	50B17NM	3.718	B	5/8	1-1/2	2-11/16	1	0.25
18	50B18NM	3.920	B	5/8	1-5/8	2-7/8	1	0.28
19	50B19NM	4.120	B	5/8	1-3/4	3	1	0.31
20	50B20NM	4.321	B	3/4	1-3/4	3	1	0.32
21	50B21NM	4.522	B	3/4	1-3/4	3	1	0.34
22	50B22NM	4.722	B	3/4	1-3/4	3	1	0.36
23	50B23NM	4.922	B	3/4	1-3/4	3	1	0.38
24	50B24NM	5.122	B	3/4	1-3/4	3	1-1/4	0.45
25	50B25NM	5.322	B	3/4	1-3/4	3	1-1/4	0.47
26	50B26NM	5.522	B	3/4	1-3/4	3	1-1/4	0.49
27	50B27NM	5.722	B	3/4	1-3/4	3	1-1/4	0.51
28	50B28NM	5.922	B	3/4	1-3/4	3	1-1/4	0.54
29	50B29NM	6.122	B	3/4	1-3/4	3	1-1/4	0.56
30	50B30NM	6.321	B	3/4	1-3/4	3-1/4	1-1/4	0.62
31	50B31NM	6.521	B	3/4	1-3/4	3-1/4	1-1/4	0.64
32	50B32NM	6.721	B	3/4	1-3/4	3-1/4	1-1/4	0.67
33	50B33NM	6.920	B	3/4	1-3/4	3-1/4	1-1/4	0.70
34	50B34NM	7.120	B	3/4	1-3/4	3-1/4	1-1/4	0.72
35	50B35NM	7.319	B	3/4	1-3/4	3-1/4	1-1/4	0.75
36	50B36NM	7.519	B	3/4	1-3/4	3-1/4	1-1/4	0.78
37	50B37NM	7.718	B	3/4	1-3/4	3-1/4	1-1/4	0.81
38	50B38NM	7.918	B	3/4	1-3/4	3-1/4	1-1/4	0.84
39	50B39NM	8.117	B	3/4	1-3/4	3-1/4	1-1/4	0.87
40	50B40NM	8.316	B	3/4	2	3-1/2	1-1/4	0.94
41	50B41NM	8.516	B	3/4	2	3-1/2	1-1/4	0.97
42	50B42NM	8.715	B	3/4	2	3-1/2	1-1/4	1.00
43	50B43NM	8.914	B	3/4	2	3-1/2	1-1/4	1.04
44	50B44NM	9.114	B	3/4	2	3-1/2	1-1/4	1.07
45	50B45NM	9.313	B	1	2-3/8	4	1-1/4	1.18
46	50B46NM	9.512	B	1	2-3/8	4	1-1/4	1.22
47	50B47NM	9.711	B	1	2-3/8	4	1-1/4	1.25
48	50B48NM	9.911	B	1	2-3/8	4	1-1/4	1.29
49	50B49NM	10.110	B	1	2-3/8	4	1-1/4	1.33
50	50B50NM	10.309	B	1	2-3/4	4-1/2	1-1/4	1.47
51	50B51NM	10.508	B	1	2-3/4	4-1/2	1-1/4	1.51
52	50B52NM	10.707	B	1	2-3/4	4-1/2	1-1/4	1.55
53	50B53NM	10.907	B	1	2-3/4	4-1/2	1-1/4	1.59
54	50B54NM	11.106	B	1	2-3/4	4-1/2	1-1/4	1.63
55	50B55NM	11.305	B	1	4-1/2	7	1-1/4	2.39
56	50B56NM	11.504	B	1	4-1/2	7	1-1/4	2.44
57	50B57NM	11.703	B	1	4-1/2	7	1-1/4	2.48
58	50B58NM	11.902	B	1	4-1/2	7	1-1/4	2.52
59	50B59NM	12.102	B	1	4-1/2	9	1-1/4	3.37
60	50B60NM	12.301	B	1	4-1/2	9	1-1/4	3.41
70	50B70NM	14.292	B	1	4-1/2	9	1-3/4	5.01
72	50B72NM	14.690	B	1	4-1/2	12	1-3/4	7.56

Our Roller Chain Sprockets are machined from solid plates of material, resulting in a sprocket that you can count on to get the job done.



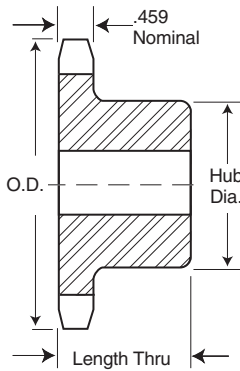
TYPE B

Notes:

- Standard Material: Natural UHMW
- Other numbers of teeth and hub styles available
- Available as stock drilled bore, finished drive bore with keyway and setscrews, or idler bore
- Large sprockets may have bolted-on hubs

Single-Type B

Our Roller Chain Sprockets are machined from solid plates of material, resulting in a sprocket that you can count on to get the job done.



TYPE B

Notes:

- Standard Material: Natural UHMW
- Other numbers of teeth and hub styles available
- Available as stock drilled bore, finished drive bore with keyway and setscrews, or idler bore
- Large sprockets may have bolted-on hubs

No. Teeth	Catalog Number	Outside Diameter	Type	Bore (inches)		Hub (inches)		Weight Lbs. (Approx.)
				Stock	Rec. Max.	Diameter	Length Thru	
9	60B9NM	2.511	B	3/4	7/8	1-1/2	1-1/4	0.11
10	60B10NM	2.758	B	3/4	7/8	1-1/2	1-1/4	0.13
11	60B11NM	3.004	B	3/4	1	2	1-1/4	0.18
12	60B12NM	3.249	B	3/4	1-1/8	2	1-1/4	0.20
13	60B13NM	3.493	B	3/4	1-1/4	2-5/16	1-1/4	0.25
14	60B14NM	3.736	B	3/4	1-3/8	2-1/2	1-1/4	0.29
15	60B15NM	3.978	B	3/4	1-5/8	2-7/8	1-1/4	0.36
16	60B16NM	4.221	B	3/4	1-3/4	3	1-1/4	0.40
17	60B17NM	4.462	B	3/4	1-3/4	3-1/4	1-1/4	0.46
18	60B18NM	4.703	B	3/4	2	3-1/2	1-1/4	0.53
19	60B19NM	4.945	B	3/4	2	3-1/2	1-1/4	0.56
20	60B20NM	5.185	B	3/4	2-1/4	3-7/8	1-1/4	0.65
21	60B21NM	5.426	B	3/4	2-3/8	4	1-1/4	0.70
22	60B22NM	5.666	B	3/4	2-3/8	4	1-1/4	0.73
23	60B23NM	5.907	B	3/4	2-3/8	4	1-1/4	0.77
24	60B24NM	6.147	B	3/4	2-3/8	4	1-1/4	0.81
25	60B25NM	6.387	B	3/4	2-3/8	4	1-1/4	0.84
26	60B26NM	6.627	B	3/4	2-3/8	4	1-1/4	0.88
27	60B27NM	6.867	B	3/4	2-3/8	4	1-1/4	0.92
28	60B28NM	7.106	B	3/4	2-3/8	4	1-1/4	0.97
29	60B29NM	7.346	B	3/4	2-3/8	4	1-1/4	1.01
30	60B30NM	7.586	B	3/4	2-3/8	4	1-1/4	1.05
31	60B31NM	7.825	B	3/4	2-3/8	4	1-1/4	1.10
32	60B32NM	8.065	B	3/4	2-3/8	4	1-1/4	1.15
33	60B33NM	8.304	B	1	2-3/8	4	1-1/4	1.18
34	60B34NM	8.544	B	1	2-3/4	4-1/2	1-1/4	1.33
35	60B35NM	8.783	B	1	2-3/4	4-1/2	1-1/4	1.38
36	60B36NM	9.023	B	1	2-3/4	4-1/2	1-1/4	1.43
37	60B37NM	9.262	B	1	2-3/4	4-1/2	1-1/4	1.49
38	60B38NM	9.501	B	1	2-3/4	4-1/2	1-1/4	1.54
39	60B39NM	9.740	B	1	2-3/4	4-1/2	1-1/4	1.60
40	60B40NM	9.980	B	1	4-1/2	7	1-1/4	2.29
41	60B41NM	10.219	B	1	4-1/2	7	1-1/4	2.35
42	60B42NM	10.458	B	1	4-1/2	7	1-1/4	2.41
43	60B43NM	10.697	B	1	4-1/2	7	1-1/4	2.47
44	60B44NM	10.936	B	1	4-1/2	7	1-1/4	2.54
45	60B45NM	11.175	B	1	4-1/2	7	1-1/4	2.61
46	60B46NM	11.415	B	1	4-1/2	7	1-1/4	2.68
47	60B47NM	11.654	B	1	4-1/2	7	1-1/4	2.74
48	60B48NM	11.893	B	1	4-1/2	7	1-1/4	2.82
49	60B49NM	12.132	B	1	4-1/2	7	1-1/4	2.89
50	60B50NM	12.371	B	1	4-1/2	7	1-1/4	2.96
51	60B51NM	12.610	B	1	4-1/2	7	1-1/4	3.04
52	60B52NM	12.849	B	1	4-1/2	7	1-1/4	3.11
53	60B53NM	13.088	B	1	4-1/2	10	1-1/4	4.30
54	60B54NM	13.327	B	1	4-1/2	10	1-3/4	5.74
55	60B55NM	13.566	B	1-1/4	4-1/2	10	1-3/4	5.80
56	60B56NM	13.805	B	1-1/4	4-1/2	10	1-3/4	5.88
57	60B57NM	14.044	B	1-1/4	4-1/2	10	1-3/4	5.96
58	60B58NM	14.283	B	1-1/4	4-1/2	10	1-3/4	6.05
59	60B59NM	14.522	B	1-1/4	4-1/2	10	1-3/4	6.13
60	60B60NM	14.761	B	1-1/4	4-1/2	10	1-3/4	6.22

No. 80 1" Pitch

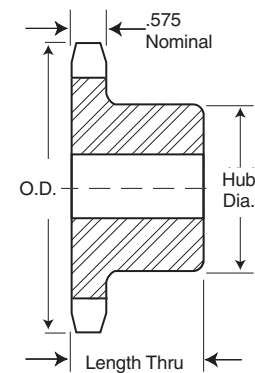
Plastic Sprockets

Martin

Single-Type B

No. Teeth	Catalog Number	Outside Diameter	Type	Bore (inches)		Hub (inches)		Weight Lbs. (Approx.)
				Stock	Rec. Max.	Diameter	Length Thru	
9	80B9NM	3.347	B	1	1	2	1-1/2	0.24
10	80B10NM	3.678	B	1	1	2	1-1/2	0.27
11	80B11NM	4.006	B	1	1	2	1-1/2	0.31
12	80B12NM	4.332	B	1	1	2	1-1/2	0.36
13	80B13NM	4.657	B	1	1-3/4	3-1/4	1-1/2	0.57
14	80B14NM	4.981	B	1	1-3/4	3-1/4	1-1/2	0.62
15	80B15NM	5.305	B	1	1-3/4	3-1/4	1-1/2	0.67
16	80B16NM	5.627	B	1	2-3/8	4	1-1/2	0.87
17	80B17NM	5.950	B	1	2-3/8	4	1-1/2	0.93
18	80B18NM	6.271	B	1	2-5/8	4-1/4	1-1/2	1.04
19	80B19NM	6.593	B	1	2-5/8	4-1/4	1-1/2	1.11
20	80B20NM	6.914	B	1	2-5/8	4-1/4	1-1/2	1.17
21	80B21NM	7.235	B	1	2-5/8	4-1/4	1-3/4	1.36
22	80B22NM	7.555	B	1	2-5/8	4-1/4	1-3/4	1.44
23	80B23NM	7.876	B	1	2-5/8	4-1/4	1-3/4	1.52
24	80B24NM	8.196	B	1	2-5/8	4-1/4	1-3/4	1.60
25	80B25NM	8.516	B	1	2-5/8	4-1/4	1-3/4	1.68
26	80B26NM	8.836	B	1-1/4	2-3/4	4-3/4	2	2.03
27	80B27NM	9.156	B	1-1/4	2-3/4	4-3/4	2	2.12
28	80B28NM	9.475	B	1-1/4	2-3/4	4-3/4	2	2.22
29	80B29NM	9.795	B	1-1/4	2-3/4	4-3/4	2	2.31
30	80B30NM	10.114	B	1-1/4	2-3/4	4-3/4	2	2.41
31	80B31NM	10.434	B	1-1/4	2-3/4	4-3/4	2	2.52
32	80B32NM	10.753	B	1-1/4	2-3/4	4-3/4	2	2.63
33	80B33NM	11.072	B	1-1/4	2-3/4	4-3/4	2	2.74
34	80B34NM	11.392	B	1-1/4	2-3/4	4-3/4	2	2.85
35	80B35NM	11.711	B	1-1/4	2-3/4	4-3/4	2	2.97
36	80B36NM	12.030	B	1-1/4	2-3/4	4-3/4	2	3.09
37	80B37NM	12.349	B	1-1/4	4-1/2	8	2	4.83
38	80B38NM	12.668	B	1-1/4	4-1/2	8	2	4.96
39	80B39NM	12.987	B	1-1/4	4-1/2	8	2	5.09
40	80B40NM	13.306	B	1-1/4	4-1/2	8	2	5.22
41	80B41NM	13.625	B	1-1/4	4-1/2	8	2	5.36
42	80B42NM	13.944	B	1-1/4	4-1/2	8	2	5.49
43	80B43NM	14.263	B	1-1/4	4-1/2	8	2	5.64
44	80B44NM	14.582	B	1-1/4	4-1/2	8	2	5.78
45	80B45NM	14.901	B	1-1/4	4-1/2	8	2	5.93
46	80B46NM	15.219	B	1-1/4	4-1/2	8	2	6.08
47	80B47NM	15.538	B	1-1/4	4-1/2	8	2	6.24
48	80B48NM	15.857	B	1-1/4	4-1/2	8	2	6.40
49	80B49NM	16.176	B	1-1/4	4-1/2	8	2	6.56

Our Roller Chain Sprockets are machined from solid plates of material, resulting in a sprocket that you can count on to get the job done.

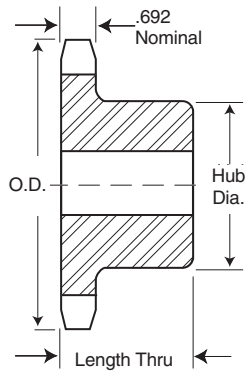


TYPE B

Notes:

- Standard Material: Natural UHMW
- Other numbers of teeth and hub styles available
- Available as stock drilled bore, finished drive bore with keyway and setscrews, or idler bore
- Large sprockets may have bolted-on hubs

Our Roller Chain Sprockets are machined from solid plates of material, resulting in a sprocket that you can count on to get the job done.



TYPE B

Single-Type B

No. Teeth	Catalog Number	Outside Diameter	Type	Bore (inches)		Hub (inches)		Weight Lbs. (Approx.)
				Stock	Rec. Max.	Diameter	Length Thru	
8	100B8NM	3.768	B	1	1-1/8	2	1-3/4	0.34
9	100B9NM	4.184	B	1	1-1/8	2	1-3/4	0.40
10	100B10NM	4.597	B	1	1-3/4	3-1/4	1-3/4	0.66
11	100B11NM	5.007	B	1	1-3/4	3-1/4	1-3/4	0.74
12	100B12NM	5.415	B	1	1-3/4	3-1/4	1-3/4	0.82
13	100B13NM	5.821	B	1	1-3/4	3-1/4	1-3/4	0.90
14	100B14NM	6.227	B	1-1/4	1-3/4	3-1/4	1-3/4	0.97
15	100B15NM	6.631	B	1-1/4	2-3/8	4	1-3/4	1.23
16	100B16NM	7.034	B	1-1/4	2-3/8	4	1-3/4	1.33
17	100B17NM	7.437	B	1-1/4	2-3/8	4	1-3/4	1.44
18	100B18NM	7.839	B	1-1/4	2-3/8	4	1-3/4	1.56
19	100B19NM	8.241	B	1-1/4	2-3/8	4	2	1.78
20	100B20NM	8.642	B	1-1/4	2-3/8	4	2	1.91
21	100B21NM	9.043	B	1-1/4	2-3/4	4-1/2	2	2.20
22	100B22NM	9.444	B	1-1/4	2-3/4	4-1/2	2	2.34
23	100B23NM	9.844	B	1-1/4	2-3/4	4-1/2	2	2.49
24	100B24NM	10.245	B	1-1/4	2-3/4	4-1/2	2	2.64
25	100B25NM	10.645	B	1-1/4	2-3/4	4-1/2	2	2.80
26	100B26NM	11.045	B	1-1/4	3	5	2	3.13
27	100B27NM	11.444	B	1-1/4	3	5	2	3.30
28	100B28NM	11.844	B	1-1/4	3	5	2	3.48
29	100B29NM	12.244	B	1-1/4	3	5	2	3.66
30	100B30NM	12.643	B	1-1/4	3	5	2	3.85
31	100B31NM	13.042	B	1-1/4	3-3/4	6	2	4.44
32	100B32NM	13.441	B	1-1/4	3-3/4	6	2	4.65
33	100B33NM	13.841	B	1-1/4	3-3/4	6	2	4.85
34	100B34NM	14.240	B	1-1/4	3-3/4	6	2	5.07
35	100B35NM	14.639	B	1-1/4	3-3/4	6	2-1/2	5.76
36	100B36NM	15.038	B	1-1/4	3-3/4	6	2-1/2	5.98
37	100B37NM	15.436	B	1-1/4	3-3/4	6	2-1/2	6.21
38	100B38NM	15.835	B	1-1/4	3-3/4	6	2-1/2	6.45

Notes:

- Standard Material: Natural UHMW
- Other numbers of teeth and hub styles available
- Available as stock drilled bore, finished drive bore with keyway and setscrews, or idler bore
- Large sprockets may have bolted-on hubs

78 Series Non-Metallic Split Sprockets



78 SERIES NON-METALLIC SPROCKETS FOR CHAINS:

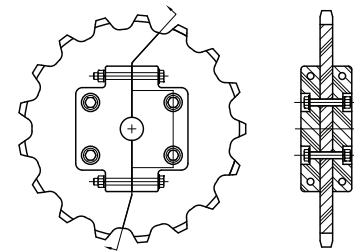
78 — H 74 — 75 — H75 — H78 — H 78RT — H 78SR — H79 — NH78 — 578R — 588R — 88 — 188 — S78 — S78 — R588 — RR588 — RR588 — R778 — 988 — IS880 — 87R — IS881 — IS882 — 433-1/2 — LXS882 — LXS86 — US881 — LXS887 — LXS882 — 488 — SS578 — SS188 — US278 — US882 — 26D — H78LR — (14-18 TEETH)

Type C — 2.609" Pitch Split

PLATE THICKNESS .875"
ROLLER DIAMETER 7/8"

Black UHMW Stock
Sprockets

Number of Teeth	Catalog Number	Pitch Diameter	Stock Bore	Max. Bore	Hub Diameter	L.T.B.	Weight Lbs. (Approx.)
6	78C6NMS	5.22	1	1-1/2	NA	2-7/8	1.5
7	78C7NMS	6.01	1	2-3/8	NA	2-7/8	1.7
8	78C8NMS	6.82	1	2-3/8	NA	2-7/8	2.4
9	78C9NMS	7.63	1	3	NA	2-7/8	2.8
10	78C10NMS	8.44	1	3	NA	4	4.5
11	78C11NMS	9.26	1	3	NA	4	5.8
12	78C12NMS	10.08	1	3	NA	4	8.6
13	78C13NMS	10.90	1	3	NA	4	9.0
14	78C14NMS	11.72	1	3	NA	4	9.6
15	78C15NMS	12.55	1	3	NA	4	10.1
16	78C16NMS	13.37	1	4	NA	4	10.7
17	78C17NMS	14.20	1	4	NA	4	11.3
18	78C18NMS	15.02	1	4	NA	4	12.0
19	78C19NMS	15.85	1	4	NA	4	12.7
20	78C20NMS	16.68	1-3/4	4-1/2	NA	4	16.4
21	78C21NMS	17.51	1-3/4	4-1/2	NA	4	17.2
22	78C22NMS	18.33	1-3/4	4-1/2	NA	4	18.0
23	78C23NMS	19.16	1-3/4	4-1/2	NA	4	18.8
24	78C24NMS	19.99	1-3/4	4-1/2	NA	4	19.7
25	78C25NMS	20.82	1-3/4	4-1/2	NA	4	20.7
27	78C27NMS	22.47	1-3/4	4-1/2	NA	4	22.6
28	78C28NMS	23.30	1-3/4	4-1/2	NA	4	23.7
30	78C30NMS	24.96	1-3/4	4-1/2	NA	4	25.8
34	78C34NMS	28.28	1-3/4	4-1/2	NA	4	30.7
40	78C40NMS	33.25	1-3/4	4-1/2	NA	4	42.8
45	78C45NMS	37.40	1-3/4	4-1/2	NA	4	50.8

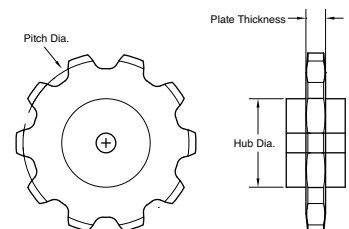


Type C — 2.609" Pitch — Non-Split

PLATE THICKNESS .875"
ROLLER DIAMETER 7/8"

Black UHMW Stock
Sprockets

Number of Teeth	Catalog Number	Pitch Diameter	Stock Bore	Max. Bore	Hub Diameter	L.T.B.	Weight Lbs. Weight
4	78C4NM	3.69	1/2	3/4	1.481	2	0.40
5	78C5NM	4.44	3/4	1	2.461	2	0.65
6	78C6NM	5.22	3/4	1-1/4	3.391	2	0.99
7	78C7NM	6.01	1	2	3-1/2	2	1.23
8	78C8NM	6.82	1	2-3/4	4-3/4	4	3.01
9	78C9NM	7.63	1	3-1/4	5-1/4	4	3.71
10	78C10NM	8.44	1	3-1/4	5-1/4	4	4.04
11	78C11NM	9.26	1	3-1/4	5-1/4	4	4.39
12	78C12NM	10.08	1	3-1/4	5-1/4	4	4.79
13	78C13NM	10.90	1	3-3/8	5-1/2	4	5.43
14	78C14NM	11.72	1	3-3/8	5-1/2	4	5.89
15	78C15NM	12.55	1	3-3/8	5-1/2	4	6.39
16	78C16NM	13.37	1	3-3/8	5-1/2	4	6.92
17	78C17NM	14.20	1	3-3/8	5-1/2	4	7.48
18	78C18NM	15.02	1	3-3/8	5-1/2	4	8.08



Please contact *Martin* if Hub OD and Length Thru Bore dimensions are critical.
* These parts have setscrews at 90 degrees and 180 degrees instead of over keyway and 90 degrees.
1 Chain saver hubs, chain may contact hubs. Only applicable to sprockets with 4, 5, and 6 teeth.

MATERIAL	COMMON APPLICATIONS
<p>UHMW Excellent abrasion resistance Low co-efficient of friction Shear strength of approximately 3,500 psi Flexural mod. of approximately 125,000 psi Economical Floats in water Two common types: Natural virgin Food applications Black reprocessed Resistant to UV degradation Slightly less expensive May have multi-colored specks</p>	<p>Wear strips Chain guide Conveyor beds Large structural components RC sprockets (usually 50 series and larger) Mill Sprockets (Engineering Class) (nearly always black reprocessed UHMW) Bushings</p>
<p>Nylon Good abrasion resistance Excellent PV value for bearing applications Shear strength of approximately 10,500 psi Flexural mod. of approximately 500,000 psi Mid-priced Does not float in water Will absorb moisture resulting in dimensional changes and reduced strength Several common types: Natural Food applications MD filled (dark grey color) High load bushings Oil-filled (natural or green color) Gears, bushings, other sliding wear components</p>	<p>High temperature wear strips Small structural components Bushings Spur Gears RC sprockets (usually 50 series and smaller).</p>
<p>Acetal (Typically used for structural components) Not great for wear applications Shear strength of approximately 8,000 psi Flexural mod. of approximately 400,000 psi Mid-priced Does not float in water Does not absorb moisture, good dimensional stability Also known as DuPont™ Delrin® acetal resin. Available in white, or black.</p>	<p>High temperature wear strips Small structural components RC sprockets (usually 50 series and smaller). Bushings Spur gears Components of food processing equipment exposed to wet environments clamps, rollers, dies</p>

DuPont™ and Delrin® is a registered trademarks or trademarks of E. I. du Pont de Nemours and Company or its affiliates.

Plastic Gears Introduction

Martin



Martin stocks “B” Style Nylon Spur Gears. Other styles and materials are available as Made-to-Order. Spur gears are available with stock bore, idler bore, or finished bore with keyway and setscrews. Standard material of construction is UHMW, Nylon and Acetal. Gear rack is supplied in nominal 48" lengths, however other lengths can be supplied upon request.

Plastic gears have been used successfully without lubrication in many of today's open gear applications. Many will work lubrication free in demanding applications where steel gears will rust or require continuous maintenance.

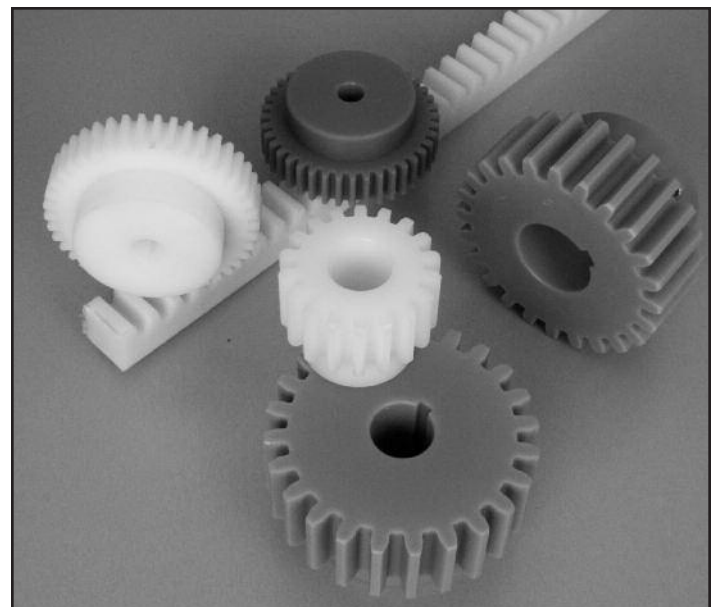
One key issue in selecting a plastic gear is proper sizing. Plastics have different properties than metals and are sensitive to changing

operating conditions. In addition to load data, attention to drive geometry, environmental and operating conditions and plastic material properties is critical.

Martin's dedicated sales staff has the experience and knowledge to help you identify and specify the proper gear for your application.

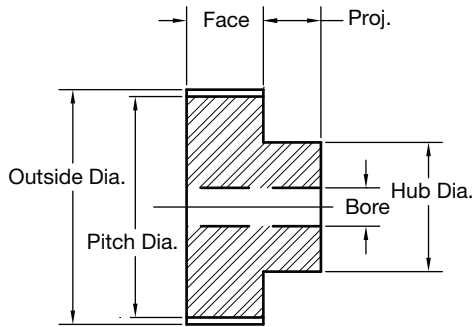
Benefits of Plastic:

- Cost Effective
- Noise Reduction
- Ability to Absorb Shock and Vibration
- Relatively Low Coefficient of Friction
- Corrosion Resistance - elimination of plating, or protective coatings.
- Tolerances often less critical than metal due to greater resilience.



Our Spur Gears are machined from solid plates of material, resulting in a spur gear that you can count on to get the job done.

- Standard Material: Natural Oil-Filled Nylon
- Other numbers of teeth and hub styles available
- Available as finished bore with Keyway and Set Screws



Natural Oil-Filled Nylon Spur Gears

No. Teeth	Catalog Number	Pressure Angle (Deg.)	Diameter		Type	Bore (Inches)		Hub (Inches)		Weight Lbs. (Approx.)
			Pitch	Outside		Stock	Max.*	Diameter	Proj.	
11	NM411	14-1/2	3	3.5	B	3/4	1-1/4	2-1/4	7/8	0.64
12	NM412	14-1/2	3	3.5	B	3/4	1-1/4	2-1/4	7/8	0.64
13	NM413	14-1/2	3.25	3.75	B	3/4	1-1/4	2-1/4	7/8	0.73
14	NM414	14-1/2	3.5	4	B	3/4	1-5/8	2-3/4	7/8	0.9
15	NM415	14-1/2	3.75	4.25	B	1	1-3/4	3	7/8	1.01
16	NM416	14-1/2	4	4.5	B	1	1-3/4	3-1/4	7/8	1.18
17	NM417	14-1/2	4.25	4.75	B	1	2	3-1/2	7/8	1.35
18	NM418	14-1/2	4.5	5	B	1	2-1/4	3-3/4	7/8	1.53
19	NM419	14-1/2	4.75	5.25	B	1	2-3/8	4	7/8	1.72
20	NM420	14-1/2	5	5.5	B	1	2-5/8	4-1/4	7/8	1.93
21	NM421	14-1/2	5.25	5.75	B	1	2-3/4	4-1/2	7/8	2.14
22	NM422	14-1/2	5.5	6	B	1	2-3/4	4-3/4	7/8	2.37
23	NM423	14-1/2	5.75	6.25	B	1	2-3/4	4-3/4	1-1/2	2.95
24	NM424	14-1/2	6	6.5	B	1	2 3/4	4-3/4	1-1/2	3.13
26	NM426	14-1/2	6.5	7	B	1	2-3/4	4-3/4	1-1/2	3.52
28	NM428	14-1/2	7	7.5	B	1	2-3/4	4-3/4	1-1/2	3.93
30	NM430	14-1/2	7.5	8	B	1	2-3/4	4-3/4	1-1/2	4.38
32	NM432	14-1/2	8	8.5	B	1	2-3/4	4-3/4	1-1/2	4.85
33	NM433	14-1/2	8.25	8.75	B	1	2-3/4	4-3/4	1-1/2	5.1
34	NM434	14-1/2	8.5	9	B	1	3	5-1/8	1-1/2	5.53
36	NM436	14-1/2	9	9.5	B	1	3	5-1/8	1-1/2	6.06
38	NM438	14-1/2	9.5	10	B	1	3	5-1/8	1-1/2	6.63
39	NM439	14-1/2	9.75	10.25	B	1	3	5-1/8	1-1/2	6.92
40	NM440	14-1/2	10	10.5	B	1	3	5-1/8	1-1/2	7.23
42	NM442	14-1/2	10.5	11	B	1	3	5-1/8	1-1/2	7.85
44	NM444	14-1/2	11	11.5	B	1	3	5-1/8	1-1/2	8.51
45	NM445	14-1/2	11.25	11.75	B	1	3	5-1/8	1-1/2	8.85
46	NM446	14-1/2	11.5	12	B	1	3	5-1/8	1-1/2	9.2
48	NM448	14-1/2	12	12.5	B	1	3	5-1/8	1-1/2	9.92
51	NM451	14-1/2	12.75	13.25	B	1	3	5	1-1/2	11
52	NM452	14-1/2	13	13.5	B	1	3	5	1-1/2	11.39
54	NM454	14-1/2	13.5	14	B	1	3	5	1-1/2	12.21
55	NM455	14-1/2	13.75	14.25	B	1	3	5	1-1/2	12.62
56	NM456	14-1/2	14	14.5	B	1	3	5	1-1/2	13.05
57	NM457	14-1/2	14.25	14.75	B	1	3	5	1-1/2	13.48
60	NM460	14-1/2	15	15.5	B	1	3	5	1-1/2	14.83

* Recommended Maximum Bore With Keyway and Setscrew.
† Enlarged Pitch Diameter with Special Tooth Form.

14½° P.A. Gears Will Not Operate With 20° P.A.

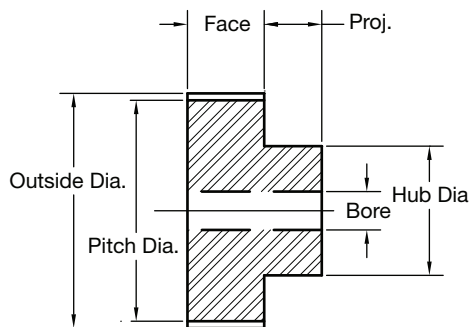
5 DP

1³/₄" Face

Nylon Stock Spur Gears

14¹/₂° Pressure Angle

Martin



Our Spur Gears are machined from solid plates of material, resulting in a spur gear that you can count on to get the job done.

- Standard Material: Natural Oil-Filled Nylon
- Other numbers of teeth and hub styles available
- Available as finished bore with Keyway and Set Screws

Natural Oil-Filled Nylon Spur Gears

No. Teeth	Catalog Number	Pressure Angle (Deg.)	Diameter		Type	Bore (Inches)		Hub (Inches)		Weight Lbs. (Approx.)
			Pitch	Outside		Stock	Max.*	Diameter	Proj.	
11	NM511	14-1/2	2.2	2.6	B	3/4	7/8	1-25/32	7/8	0.3
12	NM512	14-1/2	2.4	2.8	B	3/4	7/8	1-25/32	7/8	0.35
13	NM513	14-1/2	2.6	3	B	3/4	1-1/8	2	7/8	0.42
14	NM514	14-1/2	2.8	3.2	B	3/4	1-1/8	2-3/16	7/8	0.5
15	NM515	14-1/2	3	3.4	B	3/4	1-1/4	2-3/8	7/8	0.59
16	NM516	14-1/2	3.2	3.6	B	3/4	1-3/8	2-19/32	7/8	0.68
17	NM517	14-1/2	3.4	3.8	B	3/4	1-5/8	2-7/8	7/8	0.8
18	NM518	14-1/2	3.6	4	B	1	1-3/4	3	7/8	0.86
19	NM519	14-1/2	3.8	4.2	B	1	1-3/4	3-1/4	7/8	0.98
20	NM520	14-1/2	4	4.4	B	1	1-3/4	3-3/8	7/8	1.08
21	NM521	14-1/2	4.2	4.6	B	1	1-3/4	3-3/8	7/8	1.17
22	NM522	14-1/2	4.4	4.8	B	1	1-3/4	3-3/8	7/8	1.26
23	NM523	14-1/2	4.6	5	B	1	1-3/4	3-3/8	7/8	1.36
24	NM524	14-1/2	4.8	5.2	B	1	1-3/4	3-3/8	1-1/4	1.58
26	NM526	14-1/2	5.2	5.6	B	1	1-3/4	3-3/8	1-1/4	1.79
28	NM528	14-1/2	5.6	6	B	1	1-3/4	3-3/8	1-1/4	2.03
30	NM530	14-1/2	6	6.4	B	1	1-3/4	3-3/8	1-1/4	2.27
32	NM532	14-1/2	6.4	6.8	B	1	2-5/8	4-1/4	1-1/4	2.8
33	NM533	14-1/2	6.6	7	B	1	2-5/8	4-1/4	1-1/4	2.93
34	NM534	14-1/2	6.8	7.2	B	1	2-5/8	4-1/4	1-1/4	3.08
36	NM536	14-1/2	7.2	7.6	B	1	2-5/8	4-1/4	1-1/4	3.38
38	NM538	14-1/2	7.6	8	B	1	2-5/8	4-1/4	1-1/4	3.7
39	NM539	14-1/2	7.8	8.2	B	1	2-5/8	4-1/4	1-1/4	3.86
40	NM540	14-1/2	8	8.4	B	1	2-5/8	4-1/4	1-1/4	4.03
42	NM542	14-1/2	8.4	8.8	B	1	2-3/4	4-5/8	1-1/4	4.51
44	NM544	14-1/2	8.8	9.2	B	1	2-3/4	4-5/8	1-1/4	4.88
45	NM545	14-1/2	9	9.4	B	1	2-3/4	4-5/8	1-1/4	5.07
46	NM546	14-1/2	9.2	9.6	B	1	2-3/4	4-3/4	1-1/4	5.31
48	NM548	14-1/2	9.6	10	B	1	2-3/4	4-3/4	1-1/4	5.71
51	NM551	14-1/2	10.2	10.6	B	1	2-3/4	4-3/4	1-1/4	6.35
52	NM552	14-1/2	10.4	10.8	B	1	2-3/4	4-3/4	1-1/4	6.57
54	NM554	14-1/2	10.8	11.2	B	1	2-3/4	4-3/4	1-1/4	7.02
55	NM555	14-1/2	11	11.4	B	1	2-3/4	4-3/4	1-1/4	7.26
56	NM556	14-1/2	11.2	11.6	B	1	2-3/4	4-3/4	1-1/4	7.5
57	NM557	14-1/2	11.4	11.8	B	1	2-3/4	4-3/4	1-1/4	7.74
60	NM560	14-1/2	12	12.4	B	1	2-3/4	4-3/4	1-1/4	8.49
63	NM563	14-1/2	12.6	13	B	1	3	5	1-1/4	9.38
64	NM564	14-1/2	12.8	13.2	B	1	3	5	1-1/4	9.65
65	NM565	14-1/2	13	13.4	B	1	3	5	1-1/4	9.92
66	NM566	14-1/2	13.2	13.6	B	1	3	5	1-1/4	10.21
68	NM568	14-1/2	13.6	14	B	1	3	5	1-1/4	10.78
69	NM569	14-1/2	13.8	14.2	B	1	3	5	1-1/4	11.07
70	NM570	14-1/2	14	14.4	B	1	3	5	1-1/4	11.37
72	NM572	14-1/2	14.4	14.8	B	1	3	5	1-1/4	11.98

* Recommended Maximum Bore With Keyway and Setscrew.
† Enlarged Pitch Diameter with Special Tooth Form.

14¹/₂° P.A. Gears Will Not Operate With 20° P.A.



Nylon Stock Spur Gears

14½° Pressure Angle

6 DP

1½" Face

Natural Oil-Filled Nylon Spur Gears

No. Teeth	Catalog Number	Pressure Angle (Deg.)	Diameter		Type	Bore (Inches)		Hub (Inches)		Weight Lbs. (Approx.)
			Pitch	Outside		Stock	Max.*	Diameter	Proj.	
11	NM611	14-1/2	2	2.333	B	3/4	13/16	1-1/2	7/8	0.2
12	NM612	14-1/2	2	2.333	B	3/4	13/16	1-1/2	7/8	0.2
13	NM613	14-1/2	2.167	2.5	B	3/4	13/16	1-1/2	7/8	0.24
14	NM614	14-1/2	2.333	2.667	B	3/4	7/8	1-13/16	7/8	0.3
15	NM615	14-1/2	2.5	2.833	B	3/4	1-1/8	2	7/8	0.35
16	NM616	14-1/2	2.667	3	B	3/4	1-1/8	2-1/6	7/8	0.41
17	NM617	14-1/2	2.833	3.167	B	3/4	1-1/8	2-1/6	7/8	0.45
18	NM618	14-1/2	3	3.333	B	3/4	1-3/8	2-1/2	7/8	0.54
19	NM619	14-1/2	3.167	3.5	B	3/4	1-3/8	2-1/2	7/8	0.59
20	NM620	14-1/2	3.333	3.667	B	3/4	1-5/8	2-27/32	7/8	0.69
21	NM621	14-1/2	3.5	3.833	B	1	1-3/4	3	7/8	0.73
22	NM622	14-1/2	3.667	4	B	1	1-3/4	3	7/8	0.79
23	NM623	14-1/2	3.833	4.167	B	1	1-3/4	3	1	0.87
24	NM624	14-1/2	4	4.333	B	1	1-3/4	3	1	0.93
26	NM626	14-1/2	4.333	4.667	B	1	1-3/4	3	1	1.06
28	NM628	14-1/2	4.667	5	B	1	1-3/4	3	1	1.2
30	NM630	14-1/2	5	5.333	B	1	1-3/4	3-1/8	1	1.37
32	NM632	14-1/2	5.333	5.667	B	1	1-3/4	3-1/8	1	1.53
33	NM633	14-1/2	5.5	5.833	B	1	1-3/4	3-1/4	1	1.64
34	NM634	14-1/2	5.667	6	B	1	1-3/4	3-1/4	1	1.72
36	NM636	14-1/2	6	6.333	B	1	1-3/4	3-1/4	1	1.9
38	NM638	14-1/2	6.333	6.667	B	1	1-3/4	3-1/4	1	2.09
39	NM639	14-1/2	6.5	6.833	B	1	2-3/8	4	1	2.35
40	NM640	14-1/2	6.667	7	B	1	2-3/8	4	1	2.46
42	NM642	14-1/2	7	7.333	B	1	2-3/8	4	1	2.66
44	NM644	14-1/2	7.333	7.667	B	1	2-3/8	4	1	2.88
45	NM645	14-1/2	7.5	7.833	B	1	2-3/8	4	1	3
46	NM646	14-1/2	7.667	8	B	1	2-3/8	4	1	3.11
48	NM648	14-1/2	8	8.333	B	1	2-1/2	4-1/8	1	3.39
51	NM651	14-1/2	8.5	8.833	B	1	2-1/2	4-1/8	1	3.76
52	NM652	14-1/2	8.667	9	B	1	2-5/8	4-1/4	1	3.93
54	NM654	14-1/2	9	9.333	B	1	2-5/8	4-3/8	1	4.23
55	NM655	14-1/2	9.167	9.5	B	1	2-5/8	4-3/8	1	4.37
56	NM656	14-1/2	9.333	9.667	B	1	2-5/8	4-3/8	1	4.51
57	NM657	14-1/2	9.5	9.833	B	1	2-5/8	4-3/8	1	4.66
60	NM660	14-1/2	10	10.333	B	1	2-5/8	4-3/8	1-1/4	5.24
63	NM663	14-1/2	10.5	10.833	B	1	2-5/8	4-3/8	1-1/4	5.71
64	NM664	14-1/2	10.667	11	B	1	2-5/8	4-3/8	1-1/4	5.88
65	NM665	14-1/2	10.833	11.167	B	1	2-5/8	4-3/8	1-1/4	6.04
66	NM666	14-1/2	11	11.333	B	1	2-5/8	4-3/8	1-1/4	6.21
68	NM668	14-1/2	11.333	11.667	B	1	2-5/8	4-3/8	1-1/4	6.55
69	NM669	14-1/2	11.5	11.833	B	1	2-5/8	4-3/8	1-1/4	6.72
70	NM670	14-1/2	11.667	12	B	1	2-5/8	4-3/8	1-1/4	6.9
72	NM672	14-1/2	12	12.333	B	1	2-5/8	4-3/8	1-1/4	7.26
75	NM675	14-1/2	12.5	12.833	B	1	2-3/4	4-1/2	1-1/4	7.87
76	NM676	14-1/2	12.667	13	B	1	2-3/4	4-1/2	1-1/4	8.06
77	NM677	14-1/2	12.833	13.167	B	1	2-3/4	4-1/2	1-1/4	8.26
78	NM678	14-1/2	13	13.333	B	1	2-3/4	4-1/2	1-1/4	8.46
80	NM680	14-1/2	13.333	13.667	B	1	2-3/4	4-1/2	1-1/4	8.86
84	NM684	14-1/2	14	14.333	B	1	2-3/4	4-1/2	1-1/4	9.7
85	NM685	14-1/2	14.167	14.5	B	1	2-3/4	4-1/2	1-1/4	9.91
88	NM688	14-1/2	14.667	15	B	1	2-3/4	4-1/2	1-1/4	10.57
90	NM690	14-1/2	15	15.333	B	1	2-3/4	4-1/2	1-1/4	11.03

* Recommended Maximum Bore With Keyway and Setscrew.
† Enlarged Pitch Diameter with Special Tooth Form.

14½° P.A. Gears Will Not Operate With 20° P.A.

8 DP

1 1/4" Face

Nylon Stock Spur Gears

14 1/2° Pressure Angle

Martin

Natural Oil-Filled Nylon Spur Gears

No. Teeth	Catalog Number	Pressure Angle (Deg.)	Diameter		Type	Bore (Inches)		Hub (Inches)		Weight Lbs. (Approx.)
			Pitch	Outside		Stock	Max.*	Diameter	Proj.	
11	NM811	14-1/2	1.5	1.75	B	1/2	1/2	1-1/8	3/4	0.1
12	NM812	14-1/2	1.5	1.75	B	1/2	1/2	1-1/8	3/4	0.1
13	NM813	14-1/2	1.625	1.875	B	1/2	9/16	1-1/4	3/4	0.12
14	NM814	14-1/2	1.75	2	B	1/2	5/8	1-3/8	3/4	0.15
15	NM815	14-1/2	1.875	2.125	B	1/2	13/16	1-1/2	3/4	0.17
16	NM816	14-1/2	2	2.25	B	1/2	7/8	1-5/8	3/4	0.2
17	NM817	14-1/2	2.125	2.375	B	1/2	7/8	1-3/4	3/4	0.23
18	NM818	14-1/2	2.25	2.5	B	3/4	1	1-7/8	3/4	0.24
19	NM819	14-1/2	2.375	2.625	B	3/4	1-1/8	2	3/4	0.27
20	NM820	14-1/2	2.5	2.75	B	3/4	1-1/8	2-1/8	3/4	0.31
21	NM821	14-1/2	2.625	2.875	B	3/4	1-1/4	2-1/4	3/4	0.35
22	NM822	14-1/2	2.75	3	B	3/4	1-1/4	2-3/8	3/4	0.38
23	NM823	14-1/2	2.875	3.125	B	3/4	1-3/8	2-1/2	1	0.47
24	NM824	14-1/2	3	3.25	B	3/4	1-1/2	2-5/8	1	0.52
26	NM826	14-1/2	3.25	3.5	B	3/4	1-1/2	2-5/8	1	0.58
28	NM828	14-1/2	3.5	3.75	B	3/4	1-1/2	2-5/8	1	0.64
30	NM830	14-1/2	3.75	4	B	3/4	1-5/8	2-3/4	1	0.73
32	NM832	14-1/2	4	4.25	B	1	1-3/4	2-7/8	1	0.8
33	NM833	14-1/2	4.125	4.375	B	1	1-3/4	2-7/8	1	0.84
34	NM834	14-1/2	4.25	4.5	B	1	1-3/4	2-7/8	1	0.88
36	NM836	14-1/2	4.5	4.75	B	1	1-3/4	3	1	0.98
38	NM838	14-1/2	4.75	5	B	1	1-3/4	3	1	1.07
39	NM839	14-1/2	4.875	5.125	B	1	1-3/4	3	1	1.12
40	NM840	14-1/2	5	5.25	B	1	1-3/4	3	1	1.16
42	NM842	14-1/2	5.25	5.5	B	1	1-3/4	3	1	1.26
44	NM844	14-1/2	5.5	5.75	B	1	1-3/4	3	1	1.36
45	NM845	14-1/2	5.625	5.875	B	1	1-3/4	3	1	1.42
46	NM846	14-1/2	5.75	6	B	1	1-3/4	3	1	1.47
48	NM848	14-1/2	6	6.25	B	1	1-3/4	3	1	1.59
51	NM851	14-1/2	6.375	6.625	B	1	1-3/4	3	1	1.76
52	NM852	14-1/2	6.5	6.75	B	1	1-3/4	3	1	1.82
54	NM854	14-1/2	6.75	7	B	1	1-3/4	3	1	1.95
55	NM855	14-1/2	6.875	7.125	B	1	1-3/4	3	1	2.02
56	NM856	14-1/2	7	7.25	B	1	1-3/4	3	1	2.08
57	NM857	14-1/2	7.125	7.375	B	1	1-3/4	3	1	2.15
60	NM860	14-1/2	7.5	7.75	B	1	1-3/4	3	1	2.36
63	NM863	14-1/2	7.875	8.125	B	1	2	3-1/2	1	2.68
64	NM864	14-1/2	8	8.25	B	1	2	3-1/2	1	2.76
65	NM865	14-1/2	8.125	8.375	B	1	2	3-1/2	1	2.83
66	NM866	14-1/2	8.25	8.5	B	1	2	3-1/2	1	2.91
68	NM868	14-1/2	8.5	8.75	B	1	2	3-1/2	1	3.07
69	NM869	14-1/2	8.625	8.875	B	1	2	3-1/2	1	3.15
70	NM870	14-1/2	8.75	9	B	1	2	3-1/2	1	3.24
72	NM872	14-1/2	9	9.25	B	1	2	3-1/2	1	3.41
75	NM875	14-1/2	9.375	9.625	B	1	2	3-1/2	1	3.67
76	NM876	14-1/2	9.5	9.75	B	1	2	3-1/2	1	3.76
77	NM877	14-1/2	9.625	9.875	B	1	2	3-1/2	1-1/8	3.9
78	NM878	14-1/2	9.75	10	B	1	2-3/8	4	1-1/8	4.12
80	NM880	14-1/2	10	10.25	B	1	2-3/8	4	1-1/8	4.31
84	NM884	14-1/2	10.5	10.75	B	1	2-3/8	4	1-1/8	4.7
85	NM885	14-1/2	10.625	10.875	B	1	2-3/8	4	1-1/8	4.8
88	NM888	14-1/2	11	11.25	B	1	2-3/8	4	1-1/8	5.11
90	NM890	14-1/2	11.25	11.5	B	1	2-3/8	4	1-1/8	5.32
91	NM891	14-1/2	11.375	11.625	B	1	2-3/8	4	1-1/8	5.43
92	NM892	14-1/2	11.5	11.75	B	1	2-3/8	4	1-1/8	5.54
96	NM896	14-1/2	12	12.25	B	1	2-3/8	4	1-1/8	5.99

* Recommended Maximum Bore With Keyway and Setscrew.
 † Enlarged Pitch Diameter with Special Tooth Form.

14 1/2° P.A. Gears Will Not Operate With 20° P.A.



Nylon Stock Spur Gears

14½° Pressure Angle

10 DP 1" Face

Natural Oil-Filled Nylon Spur Gears

No. Teeth	Catalog Number	Pressure Angle (Deg.)	Diameter		Type	Bore (Inches)		Hub (Inches)		Weight Lbs. (Approx.)
			Pitch	Outside		Stock	Max.*	Diameter	Proj.	
11	NM1011	14-1/2	1.2	1.4	B	3/8	7/16	15/16	5/8	0.05
12	NM1012	14-1/2	1.2	1.4	B	3/8	7/16	15/16	5/8	0.05
13	NM1013	14-1/2	1.3	1.5	B	3/8	7/16	1	5/8	0.06
14	NM1014	14-1/2	1.4	1.6	B	1/2	1/2	1-1/8	5/8	0.07
15	NM1015	14-1/2	1.5	1.7	B	1/2	1/2	1-7/32	5/8	0.08
16	NM1016	14-1/2	1.6	1.8	B	1/2	9/16	1-5/16	5/8	0.1
17	NM1017	14-1/2	1.7	1.9	B	1/2	5/8	1-3/8	5/8	0.11
18	NM1018	14-1/2	1.8	2	B	1/2	3/4	1-17/32	5/8	0.13
19	NM1019	14-1/2	1.9	2.1	B	1/2	3/4	1-9/16	5/8	0.14
20	NM1020	14-1/2	2	2.2	B	1/2	7/8	1-23/32	5/8	0.17
21	NM1021	14-1/2	2.1	2.3	B	1/2	7/8	1-3/4	5/8	0.18
22	NM1022	14-1/2	2.2	2.4	B	1/2	1	1-7/8	5/8	0.2
23	NM1023	14-1/2	2.3	2.5	B	3/4	1-1/8	2	5/8	0.21
24	NM1024	14-1/2	2.4	2.6	B	3/4	1-1/4	2-1/8	5/8	0.23
26	NM1026	14-1/2	2.6	2.8	B	3/4	1-1/4	2-1/8	5/8	0.27
28	NM1028	14-1/2	2.8	3	B	3/4	1-1/4	2-1/8	7/8	0.33
30	NM1030	14-1/2	3	3.2	B	3/4	1-1/4	2-1/8	7/8	0.36
32	NM1032	14-1/2	3.2	3.4	B	3/4	1-1/4	2-1/8	7/8	0.4
33	NM1033	14-1/2	3.3	3.5	B	3/4	1-1/4	2-1/8	7/8	0.42
34	NM1034	14-1/2	3.4	3.6	B	3/4	1-1/4	2-1/8	7/8	0.44
36	NM1036	14-1/2	3.6	3.8	B	3/4	1-1/4	2-1/4	7/8	0.5
38	NM1038	14-1/2	3.8	4	B	3/4	1-1/4	2-1/4	7/8	0.55
39	NM1039	14-1/2	3.9	4.1	B	3/4	1-1/4	2-1/4	7/8	0.57
40	NM1040	14-1/2	4	4.2	B	3/4	1-1/4	2-1/4	7/8	0.59
42	NM1042	14-1/2	4.2	4.4	B	3/4	1-1/4	2-1/4	7/8	0.64
44	NM1044	14-1/2	4.4	4.6	B	3/4	1-1/4	2-1/4	7/8	0.7
45	NM1045	14-1/2	4.5	4.7	B	3/4	1-3/8	2-1/2	7/8	0.76
46	NM1046	14-1/2	4.6	4.8	B	3/4	1-3/8	2-1/2	7/8	0.78
48	NM4048	14-1/2	4.8	5	B	3/4	1-3/8	2-1/2	7/8	0.84
51	NM1051	14-1/2	5.1	5.3	B	3/4	1-3/8	2-1/2	7/8	0.93
52	NM1052	14-1/2	5.2	5.4	B	3/4	1-3/8	2-1/2	7/8	0.96
54	NM1054	14-1/2	5.4	5.6	B	3/4	1-3/8	2-1/2	7/8	1.03
55	NM1055	14-1/2	5.5	5.7	B	3/4	1-3/8	2-1/2	7/8	1.06
56	NM1056	14-1/2	5.6	5.8	B	3/4	1-3/8	2-1/2	7/8	1.1
57	NM1057	14-1/2	5.7	5.9	B	3/4	1-3/8	2-1/2	7/8	1.13
60	NM1060	14-1/2	6	6.2	B	3/4	1-3/8	2-1/2	7/8	1.24
63	NM1063	14-1/2	6.3	6.5	B	7/8	1-5/8	2-3/4	7/8	1.37
64	NM1064	14-1/2	6.4	6.6	B	7/8	1-5/8	2-3/4	7/8	1.41
65	NM1065	14-1/2	6.5	6.7	B	7/8	1-5/8	2-3/4	7/8	1.45
66	NM1066	14-1/2	6.6	6.8	B	7/8	1-5/8	2-3/4	7/8	1.49
68	NM1068	14-1/2	6.8	7	B	7/8	1-5/8	2-3/4	7/8	1.58
69	NM1069	14-1/2	6.9	7.1	B	7/8	1-5/8	2-3/4	7/8	1.62
70	NM1070	14-1/2	7	7.2	B	7/8	1-5/8	2-3/4	7/8	1.66
72	NM1072	14-1/2	7.2	7.4	B	7/8	1-5/8	2-3/4	7/8	1.75
80	NM1080	14-1/2	8	8.2	B	7/8	1-3/4	3	7/8	2.16
84	NM1084	14-1/2	8.4	8.6	B	7/8	1-3/4	3	7/8	2.36
85	NM1085	14-1/2	8.5	8.7	B	7/8	1-3/4	3	7/8	2.41
90	NM1090	14-1/2	9	9.2	B	7/8	1-3/4	3	7/8	2.68
95	NM1095	14-1/2	9.5	9.7	B	7/8	1-3/4	3	7/8	2.96
96	NM1096	14-1/2	9.6	9.8	B	7/8	1-3/4	3	7/8	3.02
100	NM10100	14-1/2	10	10.2	B	7/8	1-3/4	3	7/8	3.26
105	NM10105	14-1/2	10.5	10.7	B	7/8	1-3/4	3	1	3.61
110	NM10110	14-1/2	11	11.2	B	7/8	1-3/4	3	1	3.94
112	NM10112	14-1/2	11.2	11.4	B	7/8	1-3/4	3	1	4.07
120	NM10120	14-1/2	12	12.2	B	7/8	1-3/4	3	1	4.64

* Recommended Maximum Bore With Keyway and Setscrew.
† Enlarged Pitch Diameter with Special Tooth Form.

14½° P.A. Gears Will Not Operate With 20° P.A.

12 DP

3/4" Face

Nylon Stock Spur Gears

14½° Pressure Angle

Martin

Natural Oil-Filled Nylon Spur Gears

No. Teeth	Catalog Number	Pressure Angle (Deg.)	Diameter		Type	Bore (Inches)		Hub (Inches)		Weight Lbs. (Approx.)
			Pitch	Outside		Stock	Max.*	Diameter	Proj.	
11	NM1211	14-1/2	1	1.167	B	3/8	7/16	3/4	1/2	0.03
12	NM1212	14-1/2	1	1.167	B	3/8	7/16	3/4	1/2	0.03
13	NM1213	14-1/2	1.083	1.25	B	3/8	7/16	13/16	1/2	0.03
14	NM1214	14-1/2	1.167	1.333	B	3/8	7/16	29/32	1/2	0.04
15	NM1215	14-1/2	1.25	1.417	B	3/8	7/16	1	1/2	0.05
16	NM1216	14-1/2	1.333	1.5	B	1/2	1/2	1-1/16	1/2	0.05
17	NM1217	14-1/2	1.417	1.583	B	1/2	1/2	1-1/8	1/2	0.06
18	NM1218	14-1/2	1.5	1.667	B	1/2	1/2	1-1/4	1/2	0.07
19	NM1219	14-1/2	1.583	1.75	B	1/2	9/16	1-5/16	1/2	0.07
20	NM1220	14-1/2	1.667	1.833	B	1/2	3/4	1-13/32	1/2	0.08
21	NM1221	14-1/2	1.75	1.917	B	1/2	13/16	1-1/2	1/2	0.1
22	NM1222	14-1/2	1.833	2	B	1/2	13/16	1-9/16	1/2	0.11
23	NM1223	14-1/2	1.917	2.083	B	1/2	3/4	1-5/8	1/2	0.12
24	NM1224	14-1/2	2	2.167	B	1/2	7/8	1-3/4	1/2	0.13
26	NM1226	14-1/2	2.167	2.333	B	1/2	7/8	1-15/16	5/8	0.17
28	NM1228	14-1/2	2.333	2.5	B	5/8	1-1/8	2-1/16	5/8	0.19
30	NM1230	14-1/2	2.5	2.667	B	5/8	1-1/4	2-1/4	5/8	0.22
32	NM1232	14-1/2	2.667	2.833	B	5/8	1-1/4	2-1/4	5/8	0.24
33	NM1233	14-1/2	2.75	2.917	B	5/8	1-1/4	2-1/4	5/8	0.25
34	NM1234	14-1/2	2.833	3	B	5/8	1-1/4	2-1/4	5/8	0.26
36	NM1236	14-1/2	3	3.167	B	5/8	1-3/8	2-1/2	5/8	0.31
38	NM1238	14-1/2	3.167	3.333	B	5/8	1-3/8	2-1/2	5/8	0.33
39	NM1239	14-1/2	3.25	3.417	B	5/8	1-3/8	2-1/2	5/8	0.35
40	NM1240	14-1/2	3.333	3.5	B	5/8	1-3/8	2-1/2	5/8	0.36
42	NM1242	14-1/2	3.5	3.667	B	5/8	1-3/8	2-1/2	5/8	0.38
44	NM1244	14-1/2	3.667	3.833	B	5/8	1-3/8	2-1/2	5/8	0.41
45	NM1245	14-1/2	3.75	3.917	B	5/8	1-3/8	2-1/2	3/4	0.45
46	NM1246	14-1/2	3.833	4	B	5/8	1-3/8	2-1/2	3/4	0.46
48	NM1248	14-1/2	4	4.167	B	5/8	1-3/8	2-1/2	3/4	0.49
51	NM1251	14-1/2	4.25	4.417	B	5/8	1-3/8	2-1/2	3/4	0.54
52	NM1252	14-1/2	4.333	4.5	B	5/8	1-3/8	2-1/2	3/4	0.56
54	NM1254	14-1/2	4.5	4.667	B	3/4	1-5/8	2-3/4	3/4	0.61
55	NM1255	14-1/2	4.583	4.75	B	3/4	1-5/8	2-3/4	3/4	0.63
56	NM1256	14-1/2	4.667	4.833	B	3/4	1-5/8	2-3/4	3/4	0.65
57	NM1257	14-1/2	4.75	4.917	B	3/4	1-5/8	2-3/4	3/4	0.67
60	NM1260	14-1/2	5	5.167	B	3/4	1-5/8	2-3/4	3/4	0.72
63	NM1263	14-1/2	5.25	5.417	B	3/4	1-5/8	2-3/4	3/4	0.78
64	NM1264	14-1/2	5.333	5.5	B	3/4	1-5/8	2-3/4	3/4	0.8
65	NM1265	14-1/2	5.417	5.583	B	3/4	1-5/8	2-3/4	3/4	0.82
66	NM1266	14-1/2	5.5	5.667	B	3/4	1-5/8	2-3/4	3/4	0.84
68	NM1268	14-1/2	5.667	5.833	B	3/4	1-5/8	2-3/4	3/4	0.89
69	NM1269	14-1/2	5.75	5.917	B	3/4	1-5/8	2-3/4	3/4	0.91
70	NM1270	14-1/2	5.833	6	B	3/4	1-5/8	2-3/4	3/4	0.93
72	NM1272	14-1/2	6	6.167	B	3/4	1-5/8	2-3/4	3/4	0.97
75	NM1275	14-1/2	6.25	6.417	B	3/4	1-3/4	3	3/4	1.08
76	NM1276	14-1/2	6.333	6.5	B	3/4	1-3/4	3	3/4	1.1
77	NM1277	14-1/2	6.417	6.583	B	3/4	1-3/4	3	3/4	1.13
78	NM1278	14-1/2	6.5	6.667	B	3/4	1-3/4	3	3/4	1.15
84	NM1284	14-1/2	7	7.167	B	3/4	1-3/4	3	3/4	1.31
90	NM1290	14-1/2	7.5	7.667	B	3/4	1-3/4	3	3/4	1.47
96	NM1296	14-1/2	8	8.167	B	3/4	1-3/4	3	3/4	1.65
102	NM12102	14-1/2	8.5	8.667	B	3/4	1-3/4	3	3/4	1.84
108	NM12108	14-1/2	9	9.167	B	3/4	1-3/4	3	3/4	2.04
112	NM12112	14-1/2	9.333	9.5	B	3/4	1-3/4	3	3/4	2.18
114	NM12114	14-1/2	9.5	9.667	B	3/4	1-3/4	3	3/4	2.25
120	NM12120	14-1/2	10	10.167	B	3/4	1-3/4	3	3/4	2.48

* Recommended Maximum Bore With Keyway and Setscrew.
† Enlarged Pitch Diameter with Special Tooth Form.

14½° P.A. Gears Will Not Operate With 20° P.A.



Nylon Stock Spur Gears

14½° Pressure Angle

16 DP

1/2" Face

Natural Oil-Filled Nylon Spur Gears

No. Teeth	Catalog Number	Pressure Angle (Deg.)	Diameter		Type	Bore (Inches)		Hub (Inches)		Weight Lbs. (Approx.)
			Pitch	Outside		Stock	Max.*	Diameter	Proj.	
11	NM1611	14-1/2	0.75	0.875	B	3/8	3/8	9/16	7/16	0.01
12	NM1612	14-1/2	0.75	0.875	B	3/8	3/8	9/16	7/16	0.01
13	NM1613	14-1/2	0.813	0.938	B	3/8	3/8	5/8	7/16	0.01
14	NM1614	14-1/2	0.875	1	B	3/8	3/8	11/16	7/16	0.01
15	NM1615	14-1/2	0.938	1.063	B	3/8	7/16	3/4	7/16	0.02
16	NM1616	14-1/2	1	1.125	B	3/8	7/16	13/16	7/16	0.02
17	NM1617	14-1/2	1.063	1.188	B	3/8	7/16	7/8	7/16	0.02
18	NM1618	14-1/2	1.125	1.25	B	3/8	7/16	15/16	7/16	0.03
19	NM1619	14-1/2	1.188	1.313	B	3/8	7/16	1	7/16	0.03
20	NM1920	14-1/2	1.25	1.375	B	1/2	1/2	1-1/16	7/16	0.03
21	NM1621	14-1/2	1.313	1.438	B	1/2	1/2	1-1/8	7/16	0.04
22	NM1622	14-1/2	1.375	1.5	B	1/2	1/2	1-3/16	7/16	0.04
23	NM1623	14-1/2	1.438	1.563	B	1/2	9/16	1-1/4	7/16	0.05
24	NM1624	14-1/2	1.5	1.625	B	1/2	5/8	1-5/16	7/16	0.05
26	NM1626	14-1/2	1.625	1.75	B	1/2	3/4	1-7/16	7/16	0.06
28	NM1628	14-1/2	1.75	1.875	B	1/2	13/16	1-1/2	1/2	0.07
30	NM1630	14-1/2	1.875	2	B	1/2	13/16	1-5/8	1/2	0.09
32	NM1632	14-1/2	2	2.125	B	1/2	7/8	1-3/4	1/2	0.1
33	NM1633	14-1/2	2.063	2.188	B	1/2	7/8	1-3/4	1/2	0.1
34	NM1634	14-1/2	2.125	2.25	B	1/2	1	1-7/8	1/2	0.12
36	NM1636	14-1/2	2.25	2.375	B	1/2	1-1/8	2	1/2	0.13
38	NM1638	14-1/2	2.375	2.5	B	1/2	1-1/8	2	1/2	0.14
39	NM1639	14-1/2	2.438	2.563	B	1/2	1-1/8	2	1/2	0.14
40	NM1640	14-1/2	2.5	2.625	B	1/2	1-1/8	2	1/2	0.15
42	NM1642	14-1/2	2.625	2.75	B	1/2	1-1/8	2	1/2	0.16
44	NM1644	14-1/2	2.75	2.875	B	1/2	1-1/8	2	1/2	0.17
45	NM1645	14-1/2	2.813	2.938	B	1/2	1-1/8	2	1/2	0.17
46	NM1646	14-1/2	2.875	3	B	1/2	1-1/8	2	1/2	0.18
48	NM1648	14-1/2	3	3.125	B	1/2	1-1/8	2	1/2	0.19
51	NM1651	14-1/2	3.188	3.313	B	1/2	1-1/8	2	1/2	0.21
52	NM1652	14-1/2	3.25	3.375	B	1/2	1-1/8	2	1/2	0.22
54	NM1654	14-1/2	3.375	3.5	B	1/2	1-1/8	2	1/2	0.23
55	NM1655	14-1/2	3.438	3.563	B	1/2	1-1/8	2	1/2	0.23
56	NM1656	14-1/2	3.5	3.625	B	1/2	1-1/8	2	1/2	0.24
57	NM1657	14-1/2	3.563	3.688	B	1/2	1-1/8	2	1/2	0.25
60	NM1660	14-1/2	3.75	3.875	B	1/2	1-1/8	2	1/2	0.27
63	NM1663	14-1/2	3.938	4.063	B	1/2	1-1/8	2	5/8	0.31
64	NM1664	14-1/2	4	4.125	B	5/8	1-1/8	2	5/8	0.31
65	NM1665	14-1/2	4.063	4.188	B	5/8	1-1/8	2	5/8	0.32
66	NM1666	14-1/2	4.125	4.25	B	5/8	1-1/8	2	5/8	0.32
68	NM1668	14-1/2	4.25	4.375	B	5/8	1-1/4	2-1/4	5/8	0.36
69	NM1669	14-1/2	4.313	4.438	B	5/8	1-1/4	2-1/4	5/8	0.37
70	NM1670	14-1/2	4.375	4.5	B	5/8	1-1/4	2-1/4	5/8	0.38
72	NM1672	14-1/2	4.5	4.625	B	5/8	1-1/4	2-1/4	5/8	0.39
75	NM1675	14-1/2	4.688	4.813	B	5/8	1-1/4	2-1/4	5/8	0.42
76	NM1676	14-1/2	4.75	4.875	B	5/8	1-1/4	2-1/4	5/8	0.43
77	NM1677	14-1/2	4.813	4.938	B	5/8	1-1/4	2-1/4	5/8	0.44
78	NM1678	14-1/2	4.875	5	B	5/8	1-1/4	2-1/4	5/8	0.45
80	NM1680	14-1/2	5	5.125	B	5/8	1-1/4	2-1/4	5/8	0.47
84	NM1684	14-1/2	5.25	5.375	B	5/8	1-1/4	2-1/4	5/8	0.51
88	NM1688	14-1/2	5.5	5.625	B	5/8	1-1/4	2-1/4	5/8	0.55
96	NM1696	14-1/2	6	6.125	B	5/8	1-1/4	2-1/4	5/8	0.63
104	NM16104	14-1/2	6.5	6.625	B	5/8	1-1/4	2-1/4	5/8	0.73
112	NM16112	14-1/2	7	7.125	B	5/8	1-3/8	2-1/2	5/8	0.86
120	NM16120	14-1/2	7.5	7.625	B	5/8	1-3/8	2-1/2	5/8	0.97
128	NM16128	14-1/2	8	8.125	B	5/8	1-3/8	2-1/2	5/8	1.09

* Recommended Maximum Bore With Keyway and Setscrew.
† Enlarged Pitch Diameter with Special Tooth Form.

14½° P.A. Gears Will Not Operate With 20° P.A.

PLASTICS

20 DP

3/8" Face

Nylon Stock Spur Gears

14½° Pressure Angle

Natural Oil-Filled Nylon Spur Gears

No. Teeth	Catalog Number	Pressure Angle (Deg.)	Diameter		Type	Bore (Inches)		Hub (Inches)		Weight Lbs. (Approx.)
			Pitch	Outside		Stock	Max. *	Diameter	Proj.	
11	NM2011	14-1/2	0.6	0.7	B	5/16	5/16	15/32	3/8	0.01
12	NM2012	14-1/2	0.6	0.7	B	5/16	5/16	15/32	3/8	0.01
13	NM2013	14-1/2	0.65	0.75	B	5/16	5/16	1/2	3/8	0.01
14	NM2014	14-1/2	0.7	0.8	B	5/16	5/16	35/64	3/8	0.01
15	NM2015	14-1/2	0.75	0.85	B	3/8	3/8	39/64	3/8	0.01
16	NM2016	14-1/2	0.8	0.9	B	3/8	3/8	21/32	3/8	0.01
17	NM2017	14-1/2	0.85	0.95	B	3/8	3/8	45/64	3/8	0.01
18	NM2018	14-1/2	0.9	1	B	3/8	3/8	3/4	3/8	0.01
19	NM2019	14-1/2	0.95	1.05	B	3/8	3/8	51/64	3/8	0.01
20	NM2020	14-1/2	1	1.1	B	3/8	3/8	55/64	3/8	0.02
21	NM2021	14-1/2	1.05	1.15	B	3/8	3/8	7/8	3/8	0.02
22	NM2022	14-1/2	1.1	1.2	B	3/8	3/8	31/32	3/8	0.02
23	NM2023	14-1/2	1.15	1.25	B	3/8	3/8	31/32	3/8	0.02
24	NM2024	14-1/2	1.2	1.3	B	3/8	1/2	1-1/16	3/8	0.03
26	NM2026	14-1/2	1.3	1.4	B	3/8	9/16	1-3/16	3/8	0.03
28	NM2028	14-1/2	1.4	1.5	B	3/8	9/16	1-17/64	3/8	0.04
30	NM2030	14-1/2	1.5	1.6	B	3/8	5/8	1-23/64	3/8	0.04
32	NM2032	14-1/2	1.6	1.7	B	3/8	3/4	1-7/16	1/2	0.06
33	NM2033	14-1/2	1.65	1.75	B	3/8	3/4	1-7/16	1/2	0.06
34	NM2034	14-1/2	1.7	1.8	B	3/8	13/16	1-1/2	1/2	0.06
36	NM2036	14-1/2	1.8	1.9	B	3/8	13/16	1-5/8	1/2	0.07
38	NM2038	14-1/2	1.9	2	B	3/8	7/8	1-3/4	1/2	0.08
39	NM2039	14-1/2	1.95	2.05	B	3/8	7/8	1-3/4	1/2	0.09
40	NM2040	14-1/2	2	2.1	B	3/8	7/8	1-13/16	1/2	0.09
42	NM2042	14-1/2	2.1	2.2	B	3/8	1	1-7/8	1/2	0.1
44	NM2044	14-1/2	2.2	2.3	B	3/8	1	1-7/8	1/2	0.11
45	NM2045	14-1/2	2.25	2.35	B	3/8	1-1/8	2	1/2	0.12
46	NM2046	14-1/2	2.3	2.4	B	3/8	1-1/8	2	1/2	0.12
48	NM2048	14-1/2	2.4	2.5	B	3/8	1-1/8	2	1/2	0.12
51	NM2051	14-1/2	2.55	2.65	B	3/8	1-1/8	2	1/2	0.13
52	NM2052	14-1/2	2.6	2.7	B	3/8	1-1/8	2	1/2	0.14
54	NM2054	14-1/2	2.7	2.8	B	3/8	1-1/8	2	1/2	0.14
55	NM2055	14-1/2	2.75	2.85	B	3/8	1-1/8	2	1/2	0.14
56	NM2056	14-1/2	2.8	2.9	B	3/8	1-1/8	2	1/2	0.15
57	NM2057	14-1/2	2.85	2.95	B	3/8	1-1/8	2	1/2	0.15
60	NM2060	14-1/2	3	3.1	B	3/8	1-1/8	2	1/2	0.16
63	NM2063	14-1/2	3.15	3.25	B	3/8	1-1/8	2	1/2	0.17
64	NM2064	14-1/2	3.2	3.3	B	3/8	1-1/8	2	1/2	0.18
65	NM2065	14-1/2	3.25	3.35	B	3/8	1-1/8	2	1/2	0.18
66	NM2066	14-1/2	3.3	3.4	B	3/8	1-1/8	2	1/2	0.18
68	NM2068	14-1/2	3.4	3.5	B	3/8	1-1/8	2	1/2	0.19
69	NM2069	14-1/2	3.45	3.55	B	3/8	1-1/8	2	1/2	0.19
70	NM2070	14-1/2	3.5	3.6	B	3/8	1-1/8	2	1/2	0.2
72	NM2072	14-1/2	3.6	3.7	B	3/8	1-1/4	2-1/4	1/2	0.22
75	NM2075	14-1/2	3.75	3.85	B	3/8	1-1/4	2-1/4	1/2	0.24
76	NM2076	14-1/2	3.8	3.9	B	3/8	1-1/4	2-1/4	1/2	0.24
77	NM2077	14-1/2	3.85	3.95	B	3/8	1-1/4	2-1/4	1/2	0.24
78	NM2078	14-1/2	3.9	4	B	3/8	1-1/4	2-1/4	1/2	0.25
80	NM2080	14-1/2	4	4.1	B	1/2	1-1/4	2-1/4	1/2	0.25
84	NM2084	14-1/2	4.2	4.3	B	1/2	1-1/4	2-1/4	1/2	0.27
90	NM2090	14-1/2	4.5	4.6	B	1/2	1-1/4	2-1/4	1/2	0.3
96	NM2096	14-1/2	4.8	4.9	B	1/2	1-1/4	2-1/4	1/2	0.34
100	NM20100	14-1/2	5	5.1	B	1/2	1-1/4	2-1/4	1/2	0.36
112	NM20112	14-1/2	5.6	5.7	B	1/2	1-3/8	2-1/2	1/2	0.45
120	NM20120	14-1/2	6	6.1	B	1/2	1-3/8	2-1/2	1/2	0.5
132	NM20132	14-1/2	6.6	6.7	B	1/2	1-3/8	2-1/2	1/2	0.59

* Recommended Maximum Bore With Keyway and Setscrew.

† Enlarged Pitch Diameter with Special Tooth Form.

14½° P.A. Gears Will Not Operate With 20° P.A.

14-1/2° Gear Rack

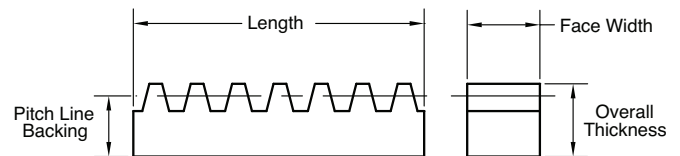
Catalog Number	Pitch	Face Width (Inches)	Overall Thickness (Inches)	Pitch Line Backing	Weight Lbs./Pc (Approx.)
R3X4NM	3	3	1-1/2	1.167	6.55
R4X4NM	4	2	1-1/2	1.25	4.68
RA4X4NM	4	2	2	1.75	6.55
R5X4NM	5	1-3/4	1-1/4	1.05	3.44
RA5X4NM	5	1-3/4	1-1/2	1.3	4.26
R6X4NM	6	1-1/2	1	0.833	2.34
RA6X4NM	6	1-1/2	1-1/2	1.33	3.74
R8X4NM	8	1-1/4	3/4	0.625	1.46
RA8X4NM	8	1-1/4	1-1/4	1.125	2.63
R10X4NM	10	1	5/8	0.525	0.98
RA10X4NM	10	1	1	0.9	1.68
R12X4NM	12	3/4	1/2	0.417	0.59
RA12X4NM	12	3/4	3/4	0.667	0.94
RA16X4NM	16	1/2	1/2	0.438	0.41
RA20X4NM	20	3/8	3/8	0.325	0.23

- Standard Material: Natural Oil-Filled Nylon
- Other dimensions available
- Supplied as nominal 48" lengths. Matched ends available upon request

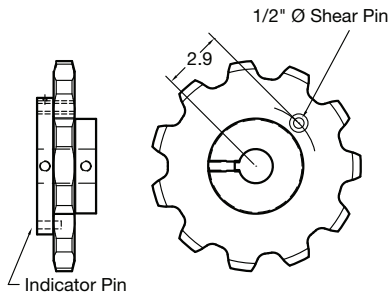


20° Gear Rack

Catalog Number	Pitch	Face Width (Inches)	Overall Thickness (Inches)	Pitch Line Backing	Weight Lbs./Pc (Approx.)
TR3X4NM	3	3	1-1/2	1.167	6.55
TR4X4NM	4	2	1-1/2	1.25	4.68
R204X4NM	4	2	2	1.75	6.55
TR5X4NM	5	1-3/4	1-1/4	1.05	3.44
R205X4NM	5	1-3/4	1-1/2	1.3	4.26
TR6X4NM	6	1-1/2	1	0.833	2.34
R206X4NM	6	1-1/2	1-1/2	1.333	3.74
TR8X4NM	8	1-1/4	3/4	0.625	1.46
R208X4NM	8	1-1/4	1-1/4	1.125	2.63
TR10X4NM	10	1	5/8	0.525	0.98
R2010X4NM	10	1	1	0.9	1.68
TR12X4NM	12	3/4	1/2	0.417	0.59
R2012X4NM	12	3/4	3/4	0.667	0.94
R2016X4NM	16	1/2	1/2	0.438	0.41
R2020X4NM	20	3/8	3/8	0.325	0.23



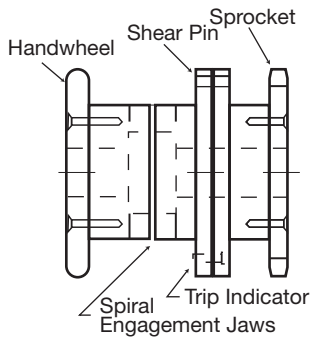
Waste Water Treatment Components



78 Series Shear Pin Sprocket

- Nylon Body & Nylon Sprocket
- Includes Trip Indicator

Number of Teeth	Catalog Number	Pitch Diameter	Stock Bore	Max. Bore	Hub Diameter	L.T.B.	Weight Lbs. (Approx.)
10	78SP10NM	8.44	1	2	4.50	2.8	4
11	78SP11NM	9.26	1	2	4.50	2.8	4.4
12	78SP12NM	10.08	1	2	4.50	2.8	4.8
13	78SP13NM	10.9	1	2	4.50	2.8	5.4



- Nylon Body & UHMW Sprocket
- Includes Trip Indicator

78 Series Jaw Clutch Sprocket

Number of Teeth	Catalog Number	Pitch Diameter	Stock Bore	Max. Bore	Hub Diameter	L.T.B.	Weight Lbs. (Approx.)
11	78JC11NM-*	9.26	1	2 1/2	-	9.5	17.6
12	78JC12NM-*	10.08	1	2 1/2	-	9.5	18.1
13	78JC13NM-*	10.9	1	2 1/2	-	9.5	18.6

- UHMW sprocket plates & hubs
- 304 Stainless Steel hardware as standard
- 316 Stainless Steel hardware optional
- Standard Rim and Chain-saver rim available
- Other Numbers of Teeth Available

720 Series Split Sprocket

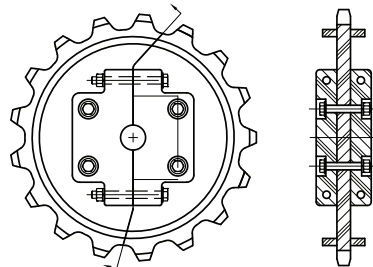
6.0" Pitch, 1" Nominal Plate Width
4" Length Thru Bore, C-Hub

Number of Teeth	Catalog Number	Pitch Diameter	Stock Bore	Max. Bore	Hub Diameter	Outside Diameter	Weight Lbs. (Approx.)
11	720C11NMS	11.1	1	3 1/4	-	10.9	7.85
13	720C13NMS	12.89	1	3 1/4	-	13.39	9.16
17	720C17NMS	16.59	1 3/4	3 15/16	-	17.09	12.55
19	720C19NMS	18.45	1 3/4	3 15/16	-	18.95	14.65
21	720C21NMS	20.33	1 3/4	3 15/16	-	20.83	16.95
23	720C23NMS	22.21	1 3/4	3 15/16	-	22.71	19.45
25	720C25NMS	24.1	1 3/4	4 1/2	-	24.6	22.15

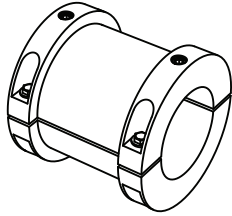
Chainsaver Rim 720CS Sprocket

6.0" Pitch, 1" Nominal Plate Width
4" Length Thru Bore, C-Hub

Number of Teeth	Catalog Number	Pitch Diameter	Stock Bore	Max. Bore	Hub Diameter	Outside Diameter	Weight Lbs. (Approx.)
11	720CS11NM	11.1	1	3-1/4	-	10.9	9.25
13	720CS13NM	12.89	1	3-1/4	-	13.39	10.75
17	720CS17NM	16.59	1 3/4	3-15/16	-	17.09	14.65
19	720CS19NM	18.45	1 3/4	3-15/16	-	18.95	16.95
21	720CS21NM	20.33	1 3/4	3-15/16	-	20.83	19.55
23	720CS23NM	22.21	1 3/4	3-15/16	-	22.71	22.25
25	720CS25NM	24.1	1 3/4	4-1/2	-	24.6	25.15

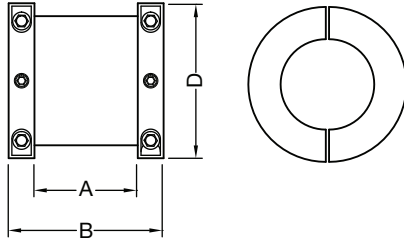


PLASTICS

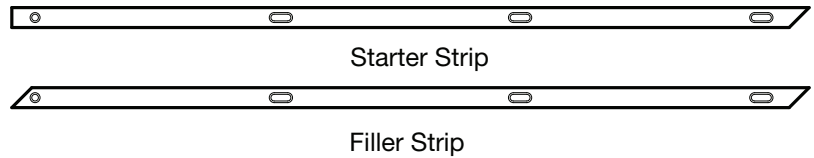


Static Shaft Bushings

These static shaft bushings protect expensive shafts from damage caused by idler sprockets. Manufactured from green oil-filled nylon with stainless steel hardware. They are as durable as stainless steel counterparts at a fraction of the cost. They are chemical, corrosion, moisture and abrasive resistant. Custom sizes and materials available.



Catalog Number	Req. Sprocket Bore (Inches)	Max. Shaft Size (Inches)	A (Inches)	B (Inches)	D (Inches)	Weight Lbs. (Approx.)
WTB4700	3-3/4 Idler	2-15/16	4	6	4-1/2	2.3
WTB6400	5 Idler	4	4	6	6	3.6
WTB7200	5-1/4 Idler	4-1/2	4	6	6-1/4	2.4
WTB8400	6 Idler	5-1/4	4	6	7	2.8

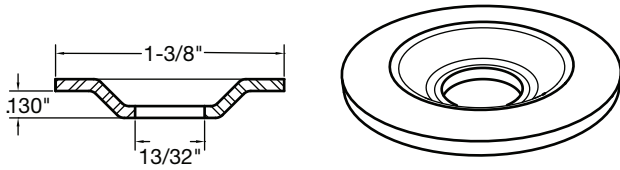


Wear Strips

These wear strips are easy to install and provide superior protection for rails and other moving machinery. Strips include slots for weld washer installations. We can easily accommodate any special spacing or size requirement for the strips and slots.

Filler Wear Strips					Starter Wear Strips				
Catalog Number	Thickness (Inches)	Width (Inches)	Length (Inches)	Weight Lbs. (Approx.)	Catalog Number	Thickness (Inches)	Width (Inches)	Length (Inches)	Weight Lbs. (Approx.)
WTF1000	3/8	2-5/8	120	4.1	WTS1100	3/8	2-5/8	120	4.1
WTF1002	3/8	3	120	4.7	WTS1102	3/8	3	120	4.7
WTF1003	1/2	2-1/2	120	5.2	WTS1103	1/2	2-1/2	120	5.2
WTF1004	1/2	3	120	6.3	WTS1104	1/2	3	120	6.3

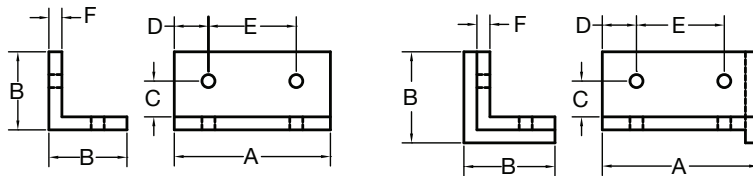
Waste Water Treatment Components



Weld Washers

Used to fasten wear strips to rails and tank floors.

Catalog Number	Material	Diameter (Inches)	Weight Lbs. (Approx.)
WTWW1375	Stainless Steel	1-3/8	.03



Carrying wear shoes

Double Hole Return wear shoes

Wear Shoes

Wear Shoes may be manufactured to fit your particular application. For custom wear shoes, please provide your *Martin* representative with specifications.

Carrying wear shoes								Double Hole Return wear shoes							
Catalog Number	A (Inches)	B (Inches)	C (Inches)	D (Inches)	E (Inches)	F (Inches)	Wt. Lbs. (Approx.)	Catalog Number	A (Inches)	B (Inches)	C (Inches)	D (Inches)	E (Inches)	F (Inches)	Wt. Lbs. (Approx.)
WTWS1001	5-1/2	3	1-5/16	7/8	3-3/4	1/2	.53	WTWS3400	4	3-1/2	1 3/8	7/8	2	1/2	.44
WTWS1550	5-1/2	3	1-3/8	7/8	3-3/4	1/2	.53	WTWS3450	4-1/2	3-1/2	1 3/8	7/8	1	1/2	.48
WTWS1600	6	3	1-3/8	1-1/8	3-3/4	1/2	.58	WTWS3600	6	3-1/2	1 3/8	1 1/8	3 3/4	1/2	.63