

# Take-Up Frames Cross Reference



A properly designed belt conveyor will require the use of a take-up device. This device will take up the stretch in the conveyor belt and keep proper tension at the drive pulley to reduce slippage. A dynamic type, like a gravity take-up, is generally preferred but not always practical due to space or cost. *Martin* Screw Take-Up Frames are a good solution for these applications. *Martin* offers several types of frames that accommodate most bearings, mounting positions, and travel. *Martin* Take-Up Frames are available in stock or made-to-order for all of your mechanical take-up needs.

*Martin's* Take-Up Frames are fabricated from steel, offering superior strength and durability in the most rugged conditions.

- Available in Top Angle, Heavy Duty, Center Pull, Wide Slot, Tube Take-Up & Light Duty
- Accommodate bearing shafts sizes from 1" to 5-15/16"
- Available in standard travel lengths from 9" to 60"
- Stainless Steel, ACME thread & MTO lengths available
- Suitable for most manufacturers' housing styles including center pull wide slot, pillow block and top angle protected screw

## CROSS REFERENCE

### Top Angle Take-Up Frames (MTA)

<i>Martin</i>	Dodge	Precision
MTA10	TP10	PTA200
MTA20	TP20	PTA203
MTA30	TP30	PTA208
MTA40	TP40	PTA300
MTA50	TP50	PTA308
MTA60	TP60	PTA400

### Light Duty Take-Up Frames (MLD)

CCI	Dodge	Precision
MLD10	LD10	PMD-100
MLD20	LD20	PMD-108
MLD30	LD30	PMD-200
MLD40	LD40	PMD-208
MLD45	LD45	PMD-300
MLD50	LD50	PMD-308

### Heavy Duty Take-Up Frames (MHD)

<i>Martin</i>	Dodge	Precision	Linkbelt	Browning	SKF
MHD200	HD200	PHD200	LHD20	T2000 A/B/C	TFT01
MHD250	HD250	PHD250	LHD25	T2000 D/E	TFT03, TFT43
MHD300	HD300	PHD300	LHD30	T2000 F/G	TFT04/5, TFT34/44
MHD350	HD350	PHD350	LHD35	T2000 H/J	TFT06, TFT46
MHD400	HD400	PHD400	LHD40	T2000 K	TFT37
MHD500	HD500	PHD500	LHD50	T2000 M/N	TFT38, TFT48

### Center Pull Take-Up Frames (MCP)

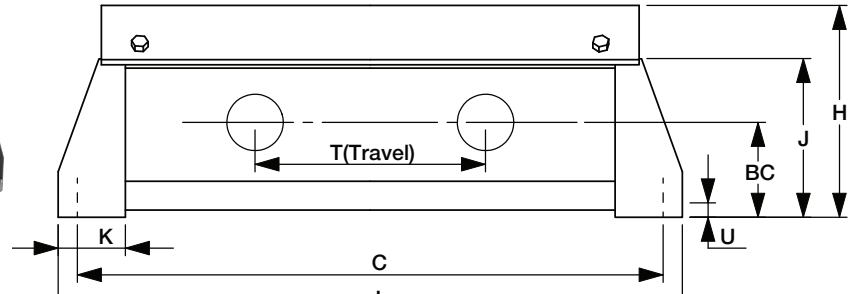
<i>Martin</i>	Dodge	Precision	Rexnord	Browning
MCP308	CP308	PCP108	ZHT6	T1000D
MCP400	CP400	PCP200	ZHT7	T1000EL
MCP408	CP408	PCP203	ZHT7	T1000EH
MCP502	CP502	PCP208	ZHT8	T1000F
MCP515	CP515	PCP300	ZHT9	T1000GL,GH
MCP613	CP613	PCP308	ZHT10	T1000JL,JH
MCP810	CP810	PCP400	ZHT11	T1000K

### Wide Slot Take-Up Frames (MWS)

<i>Martin</i>	Dodge	Precision
MWS300	WS300	PWS100
MWS308	WS308	PWS108
MWS400	WS400	PWS200
MWS502	WS502	PWS208
MWS515	WS515	PWS300
MWS608	WS608	PWS308

### Tube Take-Up Frames (MTTU)

<i>Martin</i>	Precision	Bryant	Link-Belt
MTTU10	PST100	100	100
MTTU25	PST250	250	250
MTTU30	PST300	300	300
MTTU35	PST350	350	-
MTTU40	PST400	400	400
MTTU50	PST500	500	-

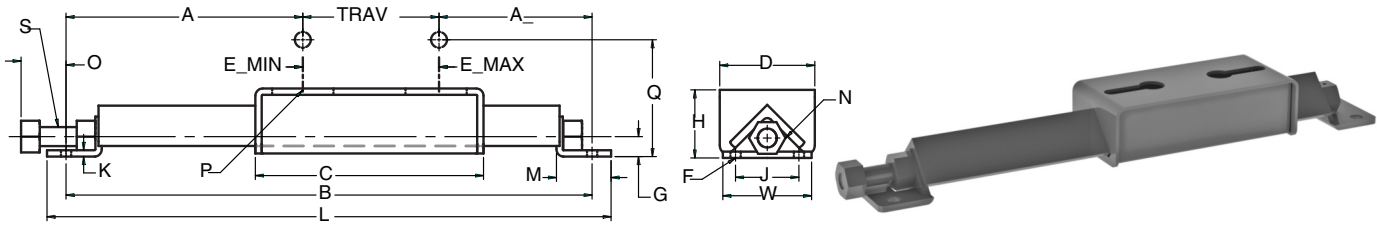


## Top Angle Take-Up Frames (MTA)

Frame Size	Nominal Travel (T)	Part Number	Weight Lbs. Approx.	BC	C	H	J	K	L	U	2b	W
MTA10	12	MTA10-12	32	3-15/16	26-1/2	8-1/2	6-9/32	3	28-1/2	3/4	-	3-1/2
	18	MTA10-18	36		32-1/2				34-1/2			
	24	MTA10-24	40		38-1/2				40-1/2			
MTA20	12	MTA20-12	34	4-3/16	27-1/2	9-1/8	6-3/4	3	29-1/2	3/4	-	3-1/2
	18	MTA20-18	39		33-1/2				35-1/2			
	24	MTA20-24	43		39-1/2				41-1/2			
MTA30	12	MTA30-12	50	4-3/8	28-1/2	10-1/8	7-1/4	3-1/2	30-1/2	3/4	-	4
	18	MTA30-18	58		34-1/2				36-1/2			
	24	MTA30-24	66		40-1/2				42-1/2			
	30	MTA30-30	74		46-1/2				48-1/2			
	36	MTA30-36	82		52-1/2				54-1/2			
	48	MTA30-48	97		64-1/2				66-1/2			
MTA40	12	MTA40-12	56	4-15/16	30-1/2	11-1/16	8-3/32	3-1/2	32-1/2	3/4	2	4-1/2
	18	MTA40-18	63		36-1/2				38-1/2			
	24	MTA40-24	70		42-1/2				44-1/2			
	30	MTA40-30	77		48-1/2				50-1/2			
	36	MTA40-36	84		54-1/2				56-1/2			
	48	MTA40-48	98		66-1/2				68-1/2			
MTA50	12	MTA50-12	68	5-7/16	32	12-1/2	9-1/4	4	34-1/2	3/4	2	4-1/2
	18	MTA50-18	76		38				40-1/2			
	24	MTA50-24	84		44				46-1/2			
	30	MTA50-30	92		50				52-1/2			
	36	MTA50-36	100		56				58-1/2			
	48	MTA50-48	116		68				70-1/2			
MTA60	12	MTA60-12	96	7	36	14-1/4	11-3/32	4-1/2	38-1/2	3/4	2-1/2	5-1/2
	18	MTA60-18	106		42				44-1/2			
	24	MTA60-24	116		48				50-1/2			
	30	MTA60-30	126		54				56-1/2			
	36	MTA60-36	136		60				62-1/2			
	48	MTA60-48	156		72				74-1/2			

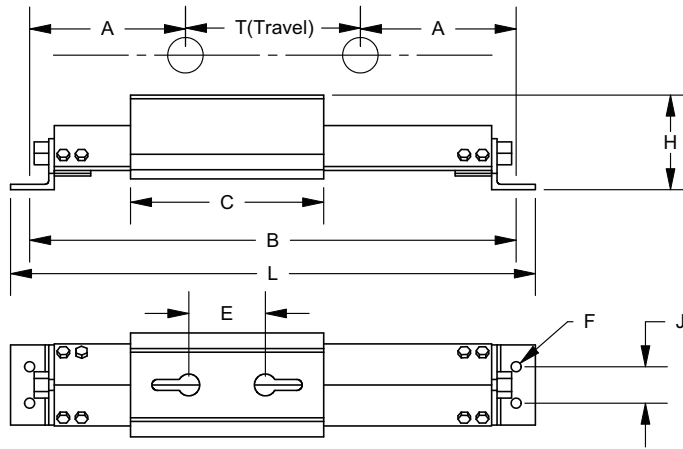
**MTO Frames available upon request.**

# Take-Up Frames



## Light Duty Take-Up Frames (MLD)

Frame Size	Nom. Travel	Part Number	Weight Lbs. Approx.	A	B	C	D	E		F	G	H	J	K	L	M	N	O	P	S	W	Angle Iron
								MIN	MAX													
MLD10	6	MLD10-6	10	4-7/8	18	6-5/8	3-1/2	2-7/8	4-3/8	3/8	1-1/16	2-3/4	2-1/2	1/4	19.5	2-1/8	1-1/8	1-5/8	3/8 x 1-1/2	3/4	3-1/2	2 x 2 x 1/4
	9	MLD10-9	11		20.5										22							
	12	MLD10-12	12		23.5										25							
	18	MLD10-18	15		29.5										31							
	30	MLD10-30	19		41.5										43							
	36	MLD10-36	22		47.5										49							
	42	MLD10-42	24		53.5										55							
	48	MLD10-48	26		59.5										61							
MLD20	6	MLD20-6	10	5-3/4	18	8-1/4	3-3/4	4-7/16	6-1/4	1/2	13/16	2-19/32	2-1/2	1/4	19.5	2-1/8	1-1/8	1-5/8	1/2 x 2-1/2	3/4	3-1/2	2 x 2 x 1/4
	9	MLD20-9	11		20.5										22							
	12	MLD20-12	13		23.5										25							
	18	MLD20-18	16		32										33.5							
	24	MLD20-24	18		38										39.5							
	30	MLD20-30	20		44										45.5							
	36	MLD20-36	24		50										51.5							
	42	MLD20-42	25		56										57.5							
48	MLD20-48	27	62	63.5																		
MLD30	12	MLD30-12	17	6-1/4	26.75	9	4	5-3/4	7	1/2	13/16	2-11/16	2-1/2	1/4	28.25	2-1/4	1-1/8	1-5/8	5/8 x 2-1/2	3/4	3-1/2	2 x 2 x 1/4
	18	MLD30-18	19		32.75										34.25							
	24	MLD30-24	22		38.75										40.25							
	30	MLD30-30	24		44.75										46.25							
	36	MLD30-36	26		50.75										52.25							
	42	MLD30-42	29		56.75										58.25							
	48	MLD30-48	31		62.75										64.25							
MLD40	12	MLD40-12	22	6-1/4	26.5	9-7/8	4-3/4	6-3/8	7-7/8	5/8	1-1/8	3-3/16	3	5/16	28.25	2-1/4	1-1/8	1-3/4	5/8 x 3	3/4	4-3/4	2-1/2 x 2-1/2 x 1/4
	18	MLD40-18	25		32.5										34.25							
	24	MLD40-24	28		38.5										40.25							
	30	MLD40-30	31		44.5										46.25							
	36	MLD40-36	34		50.5										52.25							
	42	MLD40-42	36		56.5										58.25							
	48	MLD40-48	39		62.5										64.25							
MLD45	12	MLD45-12	64	9-3/4	31.25	16-3/4	5-1/2	6	11-1/4	3/4	1-3/8	4-1/8	3	1/2	33.375	2-1/2	1-1/2	2-1/4	3/4 x 3-1/2	1	5-7/8	3 x 3 x 1/2
	18	MLD45-18	70		37.5										39.625							
	24	MLD45-24	76		43.5										45.625							
	30	MLD45-30	82		49.5										51.625							
	36	MLD45-36	87		55.5										57.625							
	42	MLD45-42	93		61.5										63.625							
MLD50	6	MLD50-6	58	9-3/4	25.25	16-3/4	5-1/2	6	11-1/8	3/4	1-3/8	4-1/8	3	1/2	27.375	2-1/2	1-1/2	2-1/4	3/4 x 3-1/2	1	5-7/8	3 x 3 x 1/2
	12	MLD50-12	64		31.25										33.375							
	18	MLD50-18	70		37.5										39.625							
	24	MLD50-24	76		43.5										45.625							
	30	MLD50-30	81		49.5										51.625							
	36	MLD50-36	87		55.5										57.625							
	42	MLD50-42	93		61.5										63.625							
	48	MLD50-48	99		67.5										69.625							

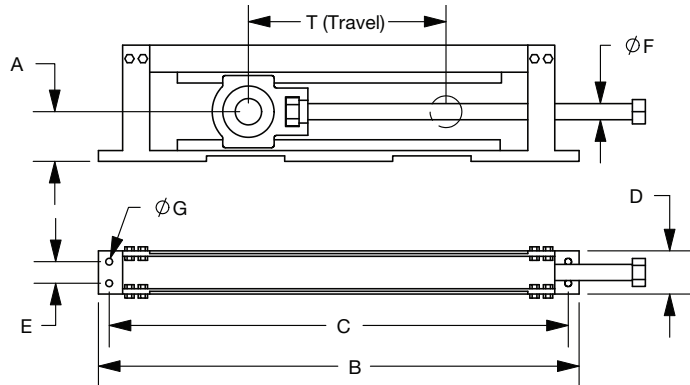


### Heavy Duty Take-Up Frames (MHD)

Frame Size	Nominal Travel (T)	Part Number	Weight Lbs. Approx.	A	B	C	D	E	F	H	J	K	L	W
MHD200	12	MHD200-12	50	8-1/2	29	11	4	Drilled To Order	5/8	5-1/4	2-1/2	6-1/8	31	5
	18	MHD200-18	53		35								37	
	24	MHD200-24	56		41								43	
	30	MHD200-30	60		47								49	
	36	MHD200-36	64		53								55	
MHD250	12	MHD250-12	84	10-3/8	32 3/4	13-1/4	5	Drilled To Order	5/8	6-1/4	3	7-1/8	35-1/4	5-1/2
	18	MHD250-18	89		38 3/4								41-1/4	
	24	MHD250-24	95		44 3/4								47-1/4	
	30	MHD250-30	100		50 3/4								53-1/4	
	36	MHD250-36	106		56 3/4								59-1/4	
MHD300	12	MHD300-12	140	11-3/4	35 1/2	14-1/4	6	Drilled To Order	3/4	7	3	8-3/4	38-1/4	6-1/2
	18	MHD300-18	147		41 1/2								44-1/4	
	24	MHD300-24	155		47 1/2								50-1/4	
	30	MHD300-30	165		53 1/2								56-1/4	
	36	MHD300-36	175		59 1/2								62-1/4	
	48	MHD300-48	196		71 1/2								74-1/4	
MHD350	12	MHD350-12	150	12-5/8	37 1/4	16	6	Drilled To Order	3/4	7	3	8-3/4	40	6-1/2
	18	MHD350-18	160		43 1/4								46	
	24	MHD350-24	170		49 1/4								52	
	30	MHD350-30	180		55 1/4								58	
	36	MHD350-36	190		61 1/4								64	
	48	MHD350-48	210		73 1/4								76	
MHD400	12	MHD400-12	179	14-5/8	41 1/4	20	7	Drilled To Order	3/4	7	3	8-3/4	44	6-1/2
	18	MHD400-18	189		47 1/4								50	
	24	MHD400-24	199		53 1/4								56	
	30	MHD400-30	209		59 1/4								62	
	36	MHD400-36	219		65 1/4								68	
	48	MHD400-48	240		77 1/4								80	
MHD500	12	MHD500-12	305	17-1/2	47	23-1/2	8-1/2	Drilled To Order	7/8	7-3/4	4	11-1/4	49-1/2	7
	18	MHD500-18	322		53								55-1/2	
	24	MHD500-24	340		59								61-1/2	
	30	MHD500-30	355		65								67-1/2	
	36	MHD500-36	370		71								73-1/2	
	42	MHD500-42	386		77								79-1/2	
	48	MHD500-48	401		83								85-1/2	

MTO Frames available upon request.

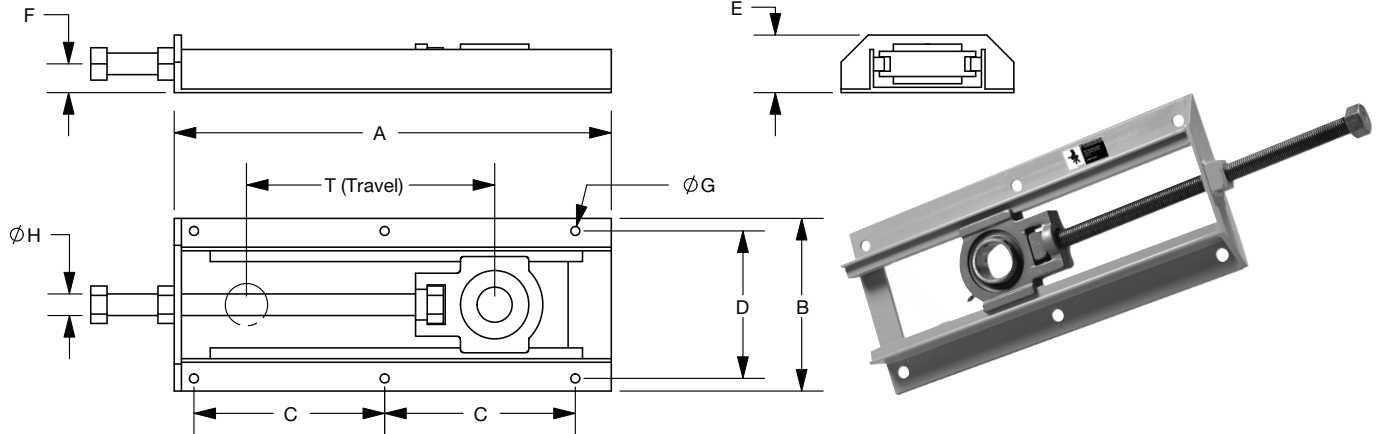
# Take-Up Frames



## Center Pull Take-Up Frames (MCP)

Frame Size	Nominal Travel (T)	Part Number	Weight Lbs. Approx.	A	B	C	D	E	F	G	
										Qty	Dia
MCP308	12	MCP308-12	30	3-7/16	28	26	3	NA	3/4	2	1/2
	18	MCP308-18	36		34	32					
	24	MCP308-24	40		40	38					
	30	MCP308-30	45		46	44					
	36	MCP308-36	50		52	50					
MCP400	12	MCP400-12	57	3-15/16	29-1/2	27-1/2	4	NA	1	2	5/8
	18	MCP400-18	66		35-1/2	33-1/2					
	24	MCP400-24	75		41-1/2	39-1/2					
	30	MCP400-30	85		47-1/2	45-1/2					
	36	MCP400-36	93		53-1/2	51-1/2					
MCP408	12	MCP408-12	62	4-7/16	29-1/2	27-1/2	4	NA	1-1/8	2	5/8
	18	MCP408-18	71		35-1/2	33-1/2					
	24	MCP408-24	82		41-1/2	39-1/2					
	30	MCP408-30	91		47-1/2	45-1/2					
	36	MCP408-36	102		53-1/2	51-1/2					
MCP502	12	MCP502-12	68	4-3/8	30-1/2	28-1/2	4	NA	1-1/4	2	3/4
	18	MCP502-18	79		36-1/2	34-1/2					
	24	MCP502-24	89		42-1/2	40-1/2					
	30	MCP502-30	101		48-1/2	46-1/2					
	36	MCP502-36	110		54-1/2	52-1/2					
MCP515	12	MCP515-12	112	5-1/8	32-1/2	30-1/2	5	2	1-1/2	4	5/8
	18	MCP515-18	134		38-1/2	36-1/2					
	24	MCP515-24	152		44-1/2	42-1/2					
	30	MCP515-30	166		50-1/2	48-1/2					
	36	MCP515-36	186		56-1/2	54-1/2					
MCP613	12	MCP613-12	128	5-5/8	34-1/4	32	5	2	1-3/4	4	3/4
	18	MCP613-18	146		40-1/4	38					
	24	MCP613-24	165		46-1/4	44					
	30	MCP613-30	184		52-1/4	50					
	36	MCP613-36	202		58-1/4	56					
MCP810	12	MCP810-12	200	7	38-1/2	36	6	2-1/2	2	4	3/4
	18	MCP810-18	242		44-1/2	42					
	24	MCP810-24	252		50-1/2	48					
	30	MCP810-30	278		56-1/2	54					
	36	MCP810-36	304		62-1/2	60					

**MTO Frames available upon request.**

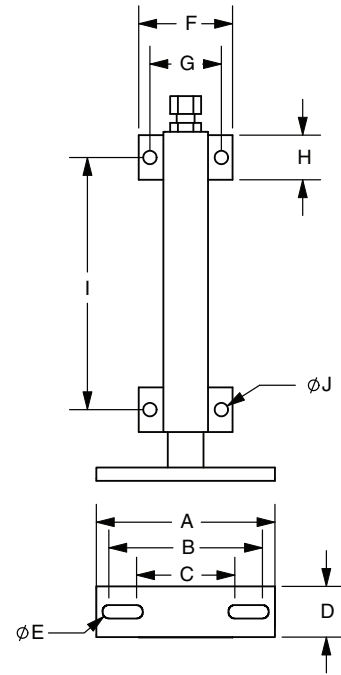
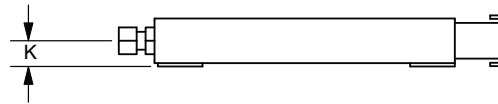


### Wide Slot Take-Up Frames (MWS)

Frame Size	Nominal Travel (T)	Part Number	Weight Lbs. Approx.	A	B	C	D	E	F	G		H
										Qty	Dia	
MWS300	6	MWS300-6	7	12	6-9/16	4-15/16	5-9/16	1-3/4	1-1/16	6	7/16	5/8
	9	MWS300-9	8.5	15		6-7/16						
	12	MWS300-12	10	18		7-15/16						
	18	MWS300-18	13	24		10-15/16						
	24	MWS300-24	16	30		13-15/16						
MWS308	6	MWS308-6	9	12	7-1/16	9-7/16	6-1/16	2	1-1/4	4	7/16	3/4
	9	MWS308-9	10.5	15		6-1/4						
	12	MWS308-12	12	18		7-3/4						
	18	MWS308-18	15	24		10-3/4						
	24	MWS308-24	18	30		13-3/4						
MWS400	6	MWS400-6	14	13-3/4	8-13/16	11-1/2	7-5/16	2-1/4	1-7/16	4	1/2	1
	9	MWS400-9	16.5	16-3/4		7-1/4						
	12	MWS400-12	19	19-3/4		8-3/4						
	18	MWS400-18	24	25-3/4		11-3/4						
	24	MWS400-24	29	31-3/4		14-3/4						
MWS502	6	MWS502-6	20	14-3/4	10-7/16	12-1/2	8 5/8	2-1/2	1-1/2	4	9/16	1-1/4
	9	MWS502-9	23.5	17-3/4		15-1/2						
	12	MWS502-12	27	20-3/4		9-1/4						
	18	MWS502-18	34	26-3/4		12-1/4						
	24	MWS502-24	41	32-3/4		15-1/4						
MWS515	6	MWS515-6	31	17-7/8	12	14-1/2	10-1/4	3	2	4	5/8	1-1/2
	9	MWS515-9	36	20-7/8		17-1/2						
	12	MWS515-12	41	23-7/8		10-1/4						
	18	MWS515-18	51	29-7/8		13-1/4						
	24	MWS515-24	61	35-7/8		16-1/4						
MWS608	6	MWS608-6	31	17-7/8	12-9/16	14-1/2	10-13/16	3	2	4	5/8	1-1/2
	9	MWS608-9	36	20-7/8		17-1/2						
	12	MWS608-12	41	23-7/8		10-1/4						
	18	MWS608-18	51	29-7/8		13-1/4						
	24	MWS608-24	61	35-7/8		16-1/4						
	30	MWS608-30	71	41-7/8	19-1/4							

**MTO Frames available upon request.**

# Take-Up Frames



## Tube Take-Up Frames (MTTU)

Frame Size	Stroke	Part Number	A	B	C	D	E Bolt	F	G	H	I	J Bolt	K	Tube Size		Threaded Rod
														Outer	Inner	
MTTU10	3	MTTU10-3	5-1/4	4-3/8	2-15/16	1-1/2	7/16	3-11/16	2-5/8	1-1/2	3-9/16	1/2	7/8	1-1/4	1	5/8-11
	6	MTTU10-6									7-1/16					
	9	MTTU10-9									11-1/16					
	12	MTTU10-12									14-1/16					
MTTU25	6	MTTU25-6	7	5-11/16	3-13/16	2	1/2	4	3	2	7-3/8	1/2	1-1/8	1-3/4	1-1/2	3/4-10
	9	MTTU25-9									10-3/8					
	12	MTTU25-12									13-3/8					
	18	MTTU25-18									19-3/8					
MTTU30	9	MTTU30-9	10	8-11/16	5-1/2	2-7/8	11/16	5-1/4	4	2-1/2	10-1/8	5/8	1-1/2	2-1/2	2-1/4	7/8-9
	12	MTTU30-12									14-1/8					
	18	MTTU30-18									21-1/8					
	24	MTTU30-24									27-1/8					
MTTU35	9	MTTU35-9	10	8-11/16	5-1/2	2-7/8	11/16	5-3/4	4-1/2	2-1/2	13	5/8	1-3/4	3	2-1/2	7/8-6 ACME
	12	MTTU35-12									16					
	18	MTTU35-18									22					
	24	MTTU35-24									28					
MTTU40	12	MTTU40-12	14	11-3/4	8-1/2	3-1/2	7/8	7-1/2	5-1/2	3-1/2	20	3/4	2-1/8	3-1/2	3	1-1/4-5 ACME
	18	MTTU40-18									26					
	24	MTTU40-24									32					
	36	MTTU40-36									44					
	48	MTTU40-48									56					
MTTU50	12	MTTU50-12	Made to Order Per Bearing Specification					11-1/2	9	5	25	1	3-1/2	6	5	2-1/4-4 ACME
	18	MTTU50-18									31					
	24	MTTU50-24									37					
	36	MTTU50-36									49					
	48	MTTU50-48									61					

**MTU Frames available upon request.**