

# **WEBSTER INDUSTRIES, INC.**

Registered To ISO 9001:2000

**Products**

**For The**

**Forest**

**Industry**



**Chains**

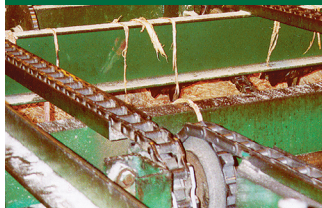
**Conveyors**

**Sprockets**

**Components**



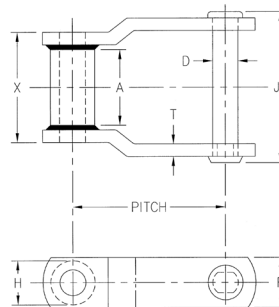
# Portalloy® Steel Chains



## Mill Chain

Webster Portalloy® is the most extensive line of welded steel mill chains in the industry. Developed for and widely used in the forest products industry, Webster's Portalloy® Mill Chain is the perfect choice for storage log decks, slasher decks, log hauls, pulp wood conveyors, debarker infeed & outfeed conveyors, chipper infeed conveyors and trimmer infeed & outfeed conveyors. Portalloy® Mill Chains are available in a broad range of sizes and styles from 2.609" pitch to 12.000" pitch. All Portalloy® Mill Chains are available completely through hardened or with through hardened rivets only. Material specifications and manufacturing practices are strictly controlled to provide a chain capable of servicing your needs under the most severe applications.

For additional information on the full line of Webster Portalloy® Welded Steel Mill Chains, consult the Webster Master Engineering Catalog #300.



PORTALLOY® Chain No.	Average Pitch Inches	Average Ultimate Strength Lbs.	Rated Working Load Lbs.	Approx. Links In 10 Feet	Average Weight Per Foot	DIMENSIONS IN INCHES						
						Overall Width	Length of Bearing	Rivet Dia.	Side Bar Thickness	Side Bar Width	Max. Spt. Face	Barrel Dia.
						JK	X	D	T	F	A	H
WR78	2.609	20,000	3,000	46	4.0	3	2	1/2	1/4	1 1/8	7/8	1 1/8
WH78	2.609	30,000	3,500	46	4.0	3	2	1/2	1/4	1 1/8	7/8	1 1/8
WH78HD	2.636	42,700	3,940	46	6.5	3 3/16	2	9/16	3/8	1 1/4	1	3/4
WR82	3.075	25,000	3,800	39	4.8	3 1/4	2 1/4	9/16	1/4	1 1/4	1 1/16	1 1/4
WH82	3.075	36,000	4,400	39	4.8	3 1/4	2 1/4	9/16	1/4	1 1/4	1 1/16	1 1/4
WR124	4.000	47,000	6,200	30	8.3	4 1/4	2 3/4	3/4	3/8	1 1/2	1 1/4	1 1/2
WH124	4.000	69,000	7,200	30	8.3	4 1/4	2 3/4	3/4	3/8	1 1/2	1 1/4	1 1/2
WHX124	4.000	69,000	7,200	30	8.3	4 1/4	2 3/4	3/4	3/8	1 1/2	1 1/4	1 1/2
WH124HDSPC	4.063	100,000	10,500	30	14.7	4 3/4	3	1	1/2	2	1 3/4	1 1/2
WH124XHD	4.063	129,000	11,375	30	17.4	5 3/8	3 1/4	1	5/8	2	1 3/4	1 1/2
WH144	4.000	69,000	9,600	30	10.5	4 3/16	2 3/4	1	3/8	1 3/4	1 5/8	1 1/2
WR111+	4.760	52,000	7,500	26	9.5	4 7/8	3 3/8	3/4	3/8	1 3/4	1 1/4	2
WH111+	4.760	77,000	8,850	26	9.5	4 7/8	3 3/8	3/4	3/8	1 3/4	1 1/4	2
WR110	6.000	47,000	6,750	20	7.2	4 5/8	3	3/4	3/8	1 1/2	1 1/4	1 3/4
WH110	6.000	69,000	7,875	20	7.2	4 5/8	3	3/4	3/8	1 1/2	1 1/4	1 3/4
WR106	6.000	47,000	6,200	20	7.0	4 1/4	2 3/4	3/4	3/8	1 1/2	1 1/4	1 1/2
WH106	6.000	69,000	7,200	20	7.0	4 1/4	2 3/4	3/4	3/8	1 1/2	1 1/4	1 1/2
WHX106	6.000	69,000	7,200	20	7.0	4 1/4	2 3/4	3/4	3/8	1 1/2	1 1/4	1 1/2
WH166	6.000	69,000	9,600	20	8.5	4 3/16	2 3/4	1	3/8	1 3/4	1 5/8	1 1/2
WR132	6.050	78,000	13,000	20	14.2	6 1/4	4 3/8	1	1/2	2	1 3/4	2 3/4
WH132	6.050	115,000	15,300	20	14.2	6 1/4	4 3/8	1	1/2	2	1 3/4	2 3/4
WH132HD	6.050	152,000	16,200	20	16.4	6 3/4	4 5/8	1	5/8	2	1 3/4	2 3/4
WR150	6.050	78,000	13,000	20	16.8	6 1/4	4 3/8	1	1/2	2 1/2	1 3/4	2 3/4
WH150	6.050	116,000	15,300	20	16.8	6 1/4	4 3/8	1	1/2	2 1/2	1 3/4	2 3/4
WH157	6.050	161,000	18,200	20	20.6	6 3/4	4 5/8	1 1/8	5/8	2 1/2	1 3/4	2 3/4
WHX155	6.050	145,000	17,750	20	19.0	6 1/2	4 1/2	1 1/8	9/16	2 1/2	1 3/4	2 3/4
WHX159	6.125	230,000	20,250	20	26.5	6 5/8	4 5/8	1 1/4	5/8	3	2	2 3/4
WHX2012A	12.000	200,000	33,000	10	15.6	6 5/8	4 5/8	1 1/4	5/8	2 1/2	1 3/4	2 3/4
WHX3012	12.000	200,000	33,000	10	18.2	6 5/8	4 5/8	1 1/4	5/8	3	1 3/4	2 3/4

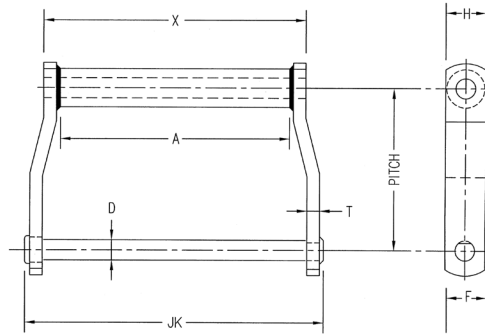
# Brute Chain

Webster Portalloy® Welded Steel Brute Chains are heavy-duty versions of Portalloy® Welded Steel Drag Chains. These chains are used in log hauls, debarker infeed & outfeed conveyors and truck & rail dump reclaim conveyors. Webster Brute Chains feature greater ultimate strengths and durability with extra surface areas for longer wear life. Brute Chain is a heavy-duty replacement for any drag chain and will replace cradle equipped chain. For log haul applications, Brute chain is reversible without damage to the sprockets.

For additional information on the full line of Webster Portalloy® Welded Steel Brute Chains, consult the Webster Master Engineering Catalog #300.

## Specifications

- Chain Sidebars: 5/8" thick carbon steel
- Pins: 1" diameter hardened alloy steel
- Barrels: 2" diameter steel tubing  
Optional 2" diameter 2 pc. welded barrel
- Standard Working Load: 22,300 Lbs.
- Ultimate Strength: 134,000 Lbs.
- Pitch Range Available: 6" & 8"



## Portalloy® Steel Chains



PORTALLOY® Chain No.	Average Pitch Inches	Average Ultimate Strength Lbs.	Rated Working Load Lbs.	Average Weight Per Foot	DIMENSIONS IN INCHES						
					Overall Width	Bearing Dim.	Rivet Dia.	Side Bar Thickness	Side Bar Height	Max. Spkt. Face	Barrel Dia.
					JK	X	D	T	F	A	H
WDH118HD	8.000	134,000	22,300	24.5	17 1/4	15 1/4	1	5/8	2	13 1/4	2
WDH120HD	6.000	134,000	22,300	24.5	12 3/8	10 3/8	1	5/8	2	8 1/2	2
WDH122HD	8.000	134,000	22,300	20.5	12 3/8	10 3/8	1	5/8	2	8 1/2	2
WDH480HD	8.000	134,000	22,300	22.4	15	13	1	5/8	2	11	2

# Chain Attachments

Webster Portalloy® Welded Steel Chain attachments for both Mill and Drag Chains are available in a wide variety of configurations. Pusher Spur-K-Style, H-Style, Lug, Cradle, and Lift Chair attachments are available in standard or custom dimensions.

For additional information on the full line of Webster Portalloy® Welded Steel Chain attachments, consult the Webster Master Engineering Catalog #300.

## Webster Quality Products Since 1876

The history of Webster Industries, Inc. spans well over a century. We specialize in conveying and elevating products and strive to provide the best service even on the smallest order.

Precision and quality are what make us a leader in the industry. Our engineering department designs and specifies to both standard and custom requirements. Our in-plant lab and testing facility assures our customers metallurgical, heat treatment and other engineered precision controls.

Both our engineering and customer service departments are ready to assist you and are prepared to send and receive specifications, prints, and quotes via 800-243-9327. A full library of engineering catalogs and technical data are available free, upon request, for your reference.

## Vibrating Conveyors



Webster Vibrating Conveyors are also available for your sawmill waste handling requirements. Webster Vibrating Conveyors are used extensively throughout the sawmill industry to convey bark, dust chips, slabs, edgings, and trim ends. These conveyors can be fitted with screens to remove small particles from the waste stream, fiberglass or stainless steel section for metal detection or removal, and transitions into other conveyors, chippers, or grinders.

For additional information on selection, specifications, and features of Webster Vibrating Conveyors, consult the Webster Master Engineering Catalog #300, or the Webster Vibrating Conveyor Catalog #601.

## CoilWeb Vibrating Conveyor

Webster's CoilWeb Coil Spring Vibrating Conveyor is a heavy duty conveyor that can be configured for your most demanding applications. The CoilWeb and CoilWeb LS conveyors incorporate heavy duty construction, coil reactor springs with rocker arms, and a coil spring drive tested and tuned for your application.

## FSL Vibrating Conveyor

Webster's FSL Vibrating Conveyor is a medium-duty low headroom model with capacities of up to 30 tph. The FSL Vibrating Conveyor can handle granular or lumpy materials, as well as plastic or metal parts and scrap or food products, economically and with a minimum of power.

Webster FSL Vibrating Conveyors are equipped with the P5000 positive eccentric drive, which features heavy-duty self-aligning roller bearings.

## FSM Vibrating Conveyor

Webster's FSM Vibrating Conveyor is a rugged, medium-duty model featuring capacities of up to 73 tph. Granular materials as fine as 100 mesh and lump materials, up to any size that fit the trough, can be conveyed.

The FSM's simplicity of design means little maintenance and low power requirements.

Webster FSM Vibrating Conveyors are equipped with the P5000 positive eccentric drive, which features heavy-duty self-aligning roller bearings.

## FSH Vibrating Conveyor

Webster's FSH Vibrating Conveyor is a heavy-duty model that offers capacities of up to 190 tph. The FSH Vibrating Conveyor can handle large tonnages of heavy, abrasive materials.

Webster FSH Vibrating Conveyors are equipped with the P8000 positive eccentric drive, which features heavy-duty self-aligning roller bearings.

### Webster Quality Sets The Standard In Chain Manufacturing

- Burnished Pitch Holes provide greater accuracy of hole size and consistency of press fit. Processed with a minimum bearing surface of 85%, Webster's burnished pitch holes offer five times more surface for the chain pin than single holes.
- Duralloy Pins are more resistant to fatigue than competitive pins. Incorporated into Webster's product line in 1992 at no extra cost to the customer, this proprietary manufacturing process guarantees a stronger and tougher pin that is harder throughout the entire body.
- Drag Chain Two-Piece Barrels feature rigid 2-piece welded construction that wraps around the rivet insuring 100° of load distribution and increasing wear life. Also, the double thickness top and bottom provides more material for wear life on the scraping surfaces and more bending strength on heavily loaded conveyors.
- Mill Chain Concentric Barrels provide 100% bearing surface on the rivets. This means no crankshaft wear on the rivets from just riding on the sidebars, as well as consistent pitch at the sprocket so wear is evenly distributed over all the links.

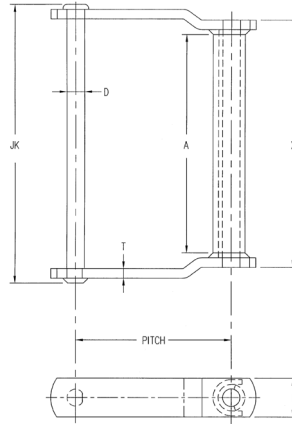
# Drag Chain

Webster Portalloy® Welded Steel Drag Chain is the most widely used drag chain in the world. The Welded Steel Drag Chain is recommended for use with chip & refuse conveyors, log haul conveyors and chip & hog fuel reclaim conveyors. Webster Portalloy® Drag Chain features an extra durable, two-piece welded barrel and is available in a variety of styles and sizes. A reversed barrel drag chain is also available for special conveying applications.

For additional information on the full line of Webster Portalloy® Welded Steel Drag Chains, consult the Webster Master Engineering Catalog #300.

## Features & Benefits

- First in the production of welded steel chains
- First in the use of controlled heat treatments and induction hardening
- Versatility of attachments in custom or standard designs available
- Produced from steel formulated and rolled to Webster's specifications for optimum weldability and service
- Designed with "interference fits" between pins and sidebars to prevent rotation of pin and to extend chain life
- Component parts individually heat treated prior to assembly enhances strength



## Portalloy® Steel Chains



## What makes PORTALLOY Drag Chain better?

- **RIGID 2-PC WELDED CONSTRUCTION** of barrel 'wraps around' rivet, increases rivet life, reduces flexing to a minimum, and improves impact resistance.
- **FULL LOAD DISTRIBUTION ON RIVET** distributes wear over 100° or more rivet diameter, and insures fixed, positive forward contact.
- **SQUARE EDGE** runs flat in conveyor and will not 'ride up' on refuse.
- **DOUBLE THICKNESS TOP AND BOTTOM** provides protection at wear point for longer life.



PORTALLOY® Chain No.	Average Pitch Inches	Average Ultimate Strength Lbs.	Rated Working Load 10 Feet	Approx. Links In 10 Feet	Average Weight Per Foot	DIMENSIONS IN INCHES					
						Overall Width	Length of Bearing	Rivet Dia.	Side Bar Thickness	Side Bar Width	Max. Spkt. Face
						JK	X	D	T	F	A
WDH102	5.000	60,000	10,000	24	11.8	9 1/4	7 3/4	3/4	3/8	1 1/2	6 1/4
WDH104	6.000	60,000	10,000	20	8.7	6 7/8	5 3/8	3/4	3/8	1 1/2	4
WD110	6.000	51,000	8,500	20	12.0	11 7/8	10 3/8	3/4	3/8	1 1/2	9
WDH110	6.000	60,000	10,000	20	12.0	11 7/8	10 3/8	3/4	3/8	1 1/2	9
WD113	6.000	55,000	9,200	20	15.0	12 1/2	10 5/8	7/8	1/2	1 1/2	9
WDH113	6.000	70,000	11,700	20	15.0	12 1/2	10 5/8	7/8	1/2	1 1/2	9
WD120	6.000	70,000	11,700	20	19.4	12	10 1/8	7/8	1/2	2	8 1/2
WDH120	6.000	90,000	15,000	20	19.4	12	10 1/8	7/8	1/2	2	8 1/2
WDH520	6.000	103,000	17,200	20	21.0	11 3/4	10 1/8	1	1/2	2	8 1/2
WD112	8.000	51,000	8,500	15	9.8	11 7/8	10 3/8	3/4	3/8	1 1/2	9
WDH112	8.000	60,000	10,000	15	9.8	11 7/8	10 3/8	3/4	3/8	1 1/2	9
WD116	8.000	55,000	9,200	15	14.5	15 1/2	14 1/8	3/4	3/8	1 3/4	12 3/4
WDH116	8.000	69,000	11,500	15	14.5	15 1/2	14 1/8	3/4	3/8	1 3/4	12 3/4
WD118	8.000	70,000	11,700	15	19.8	16 3/4	14 7/8	7/8	1/2	2	13 1/4
WDH118	8.000	90,000	15,000	15	19.8	16 3/4	14 7/8	7/8	1/2	2	13 1/4
WD122	8.000	70,000	11,700	15	16.0	12	10 1/8	7/8	1/2	2	8 1/2
WDH122	8.000	90,000	15,000	15	16.0	12	10 1/8	7/8	1/2	2	8 1/2
WDH522	8.000	123,000	20,500	15	17.5	11 3/4	10 1/8	1	1/2	2	8 1/2
WD480	8.000	70,000	11,700	15	18.1	14 5/8	12 3/4	7/8	1/2	2	11
WDH480	8.000	90,000	15,000	15	18.1	14 5/8	12 3/4	7/8	1/2	2	11
WDH580	8.000	123,000	20,500	15	19.4	14 5/8	12 3/4	1	1/2	2	11
WDH680	8.000	134,000	22,300	15	21.4	15 1/8	13	1	5/8	2	11

## Flat Top Conveyor Chains

Webster Flat Top Conveyor Chain is made from Steel Bushed Roller Chain and is available in single or double strand for paper roll handling. Chains are available with flat top plates for handling rolls on their ends, or with V-design (or Gullwing) top plates to handle rolls on their side. Rollers can be specified with either standard or anti-friction bearings.

For additional information on the various sizes and styles of Webster Flat Top Conveyor Chains, consult the Webster Master Engineering Catalog #300.

## Sprockets

Sprockets are available for all Webster chains. They can be manufactured of either cast iron with chilled rim or of flame cut steel plate with or without flame hardened teeth. Solid, split, or segmental rim construction is available.

For additional information on the full line of Webster Sprockets, consult the Webster Master Engineering Catalog #300.

## Cast/Combination Chains

Webster Industries offers one of the most extensive lines of Cast and Combination Chains available in the industry today. Webster is one of only two U.S. manufacturers operating their own foundry. Webster is proud of the fact that these chain products are made in the USA under highly controlled specifications. This degree of control assures the quality and source of components used in the manufacturing process.

The 400 Class and H Class Pintle chains are recommended for use as drive chains, lumber cant transfer chains, trimmer infeed & outfeed chains and for use with smaller dust & refuse conveyors. Webster Roller-Top and Roof-Top Chains are used in green lumber sorting conveyors, lumber and cant transfer conveyors.

Webster 700 Class Chains are widely used in waste water treatment applications. Webster's Combination Chain line is also used in waste water treatment applications, woodyard conveyors, log decks, and log hauls.

Webster's Cast and Combination Chains are the clear choice of sawmills and woodyards where quality and economy are essential. All chain links are cast from Webster's "Duramal" iron for high strength and toughness.

For additional information on the full line of Webster Cast and Combination Chains, consult the Webster Master Engineering Catalog #300.

## Hardened Steel Bushed Chains

Webster HSB (Hardened Steel Bushed) Chains have been designed for barking drum suspension service in the forest products industry. The Webster line of HSB Chains have been engineered with the optimum combination of strength, fatigue resistance and wear resistance necessary for this demanding service. Webster HSB Chains are assembled with heavy press fits and all parts are heat treated to assure heavy-duty service and extended wear.

For additional information on the full line of Webster HSB Hardened Steel Bushed Chains, consult the Webster Master Engineering Catalog #300.

### **WEBSTER INDUSTRIES, INC.**

#### **ISO 9001:2000**

325 Hall St.  
Tiffin, OH 44883  
800-243-9327 | 419-447-8232  
FAX: 419-448-1618  
[www.websterchain.com](http://www.websterchain.com)

#### **ISO 9001:2000**

3800 Second St. (39301)  
P.O. Box 1747 Meridian, MS 39302  
800-243-9327 | 601-482-0183  
FAX: 601-693-5918  
E-mail: [sales@websterchain.com](mailto:sales@websterchain.com)

9620 Southwest Herman Rd.  
P.O. Box 519  
Tualatin, OR 97062  
800-243-9327 | 503-692-4818  
FAX: 503-692-8268

#FP-01 PRINTED IN USA CCP/2.5M Rev 11/05

